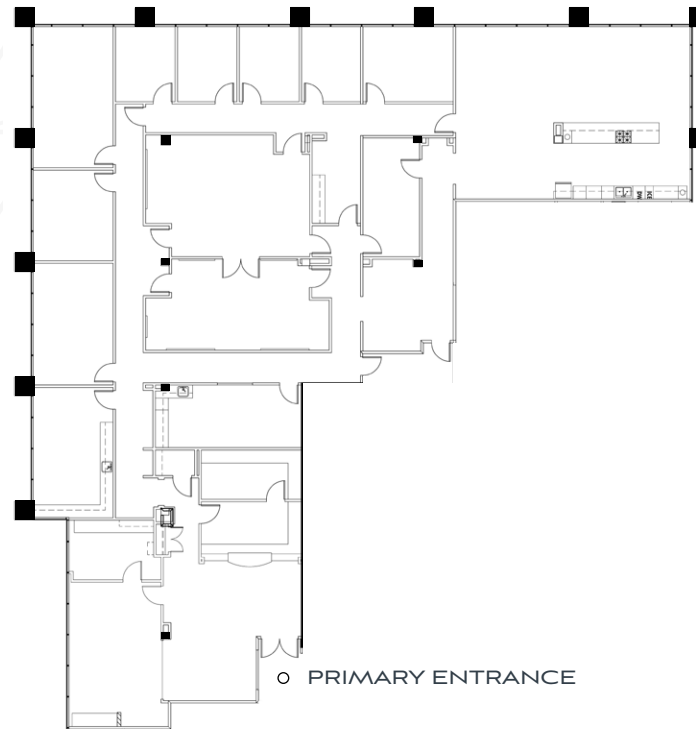


ALTMORE™

TWO

Suite 225

8,149 RSF



SITE KEY



Note: Drawing Not to Scale

For leasing,
contact:

Kyle Kenyon
First Vice President
+1 404 923 1287
kyle.kenyon@cbre.com

Chris Port
Executive Vice President
+1 404 504 5964
chris.port@cbre.com

Alex Port
Associate
+1 404 504 5941
alex.port@cbre.com

Leased by:



A strategic development of:

