

Project Area Map



STATE ROAD 11



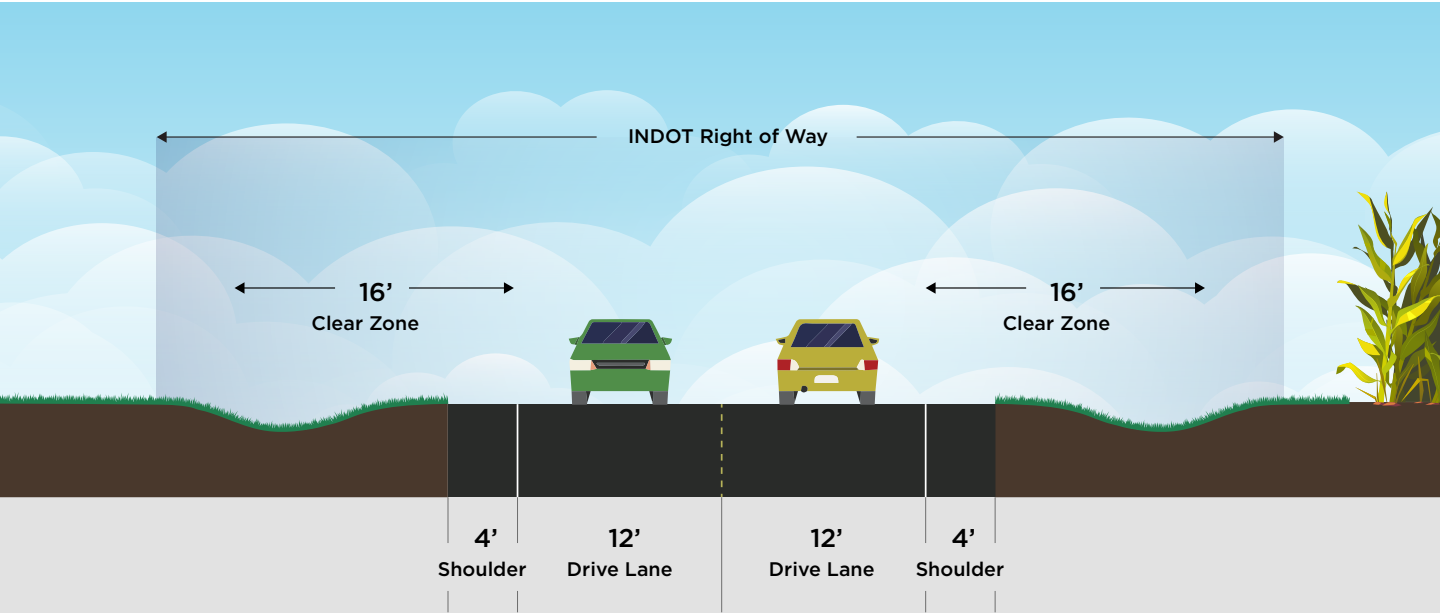
The project extends State Road 11 in southern Harrison County from the intersection of SR 337, SR 11, and Melview Road across Buck Creek, generally following Watson Road to the intersection with SR 135 to the west (see attached map).

Project History

The project was identified in the approved Harrison County 2003 Long Range Transportation Plan, and again in the 2019 Harrison County 2040 Long Range Transportation Plan. Public comment and input were integrated into the development of both long-range planning documents. The SR 11 Project (Watson Road Extension) was first discussed in the 2003 Long Range Transportation Plan as an improvement to east-west connectivity in the southern part of Harrison County. In a 2020 relinquishment agreement between Harrison County and INDOT, INDOT assumed the responsibility for funding and completing the SR 11 extension project and selected Lochmueller Group to study and develop the project.

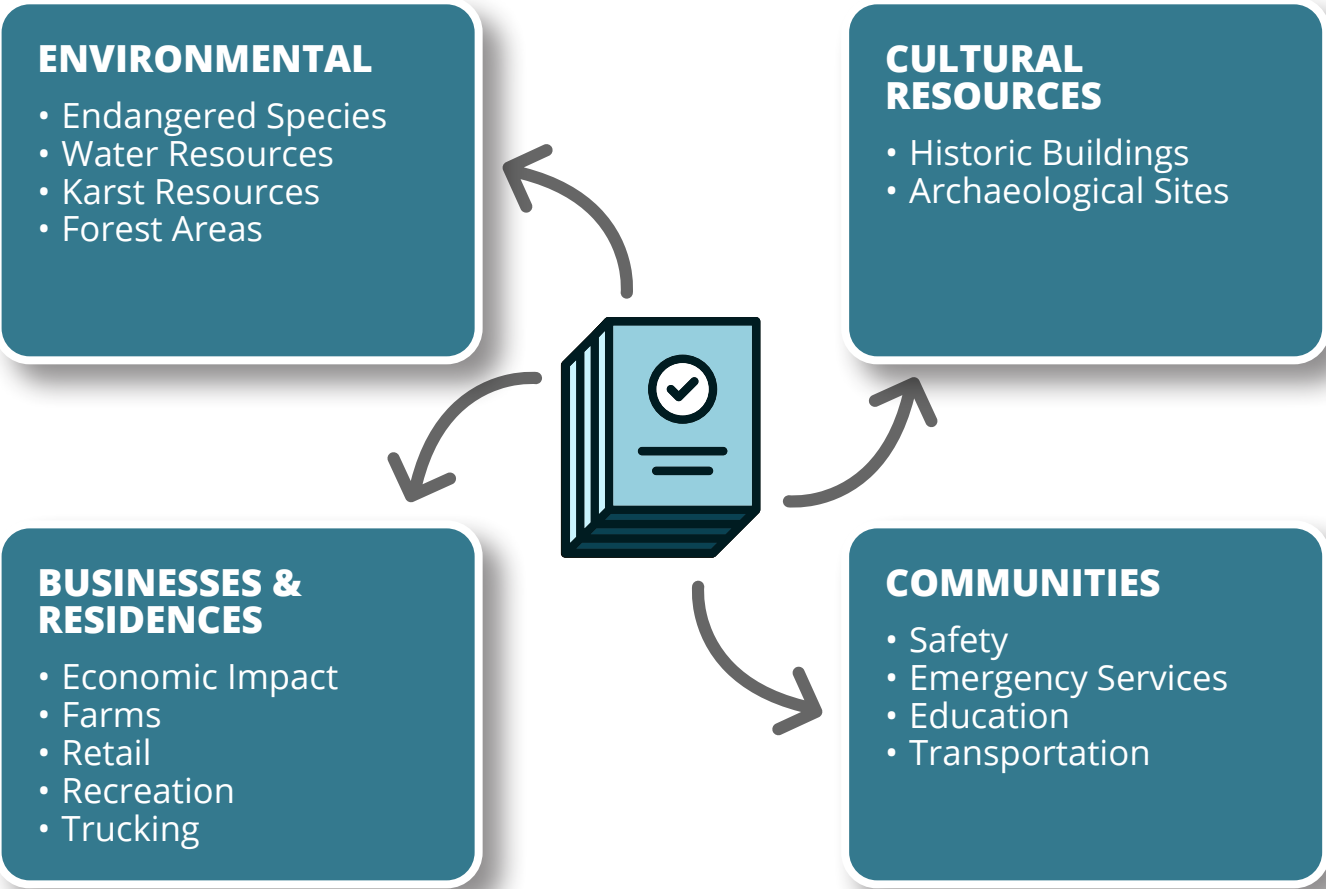
Project Description & Typical Section

The project extends State Road 11 from the intersection of SR 337, SR 11, and Melview Road, across Buck Creek to the intersection of Watson Road and SR 135. The project includes improvement of existing roads (Melview Road SE and Watson Road SE), construction of new terrain state road, and construction of a bridge. The Typical Section figure below shows the approximate dimensions that are expected for the portion of State Road 11 constructed by this project.



Project Study

The project team, working with INDOT, will complete the environmental study, project design, and acquisition of necessary right-of-way over a four-year timeframe. Preliminary engineering and environmental studies will proceed through early 2022. The objective of the environmental study is to determine the most appropriate location for the roadway while identifying and avoiding, minimizing, or mitigating potential impacts. The study examines potential impacts caused by alternative road alignments. Potential impacts fall into several categories including, but not limited to:



Draft Purpose and Need

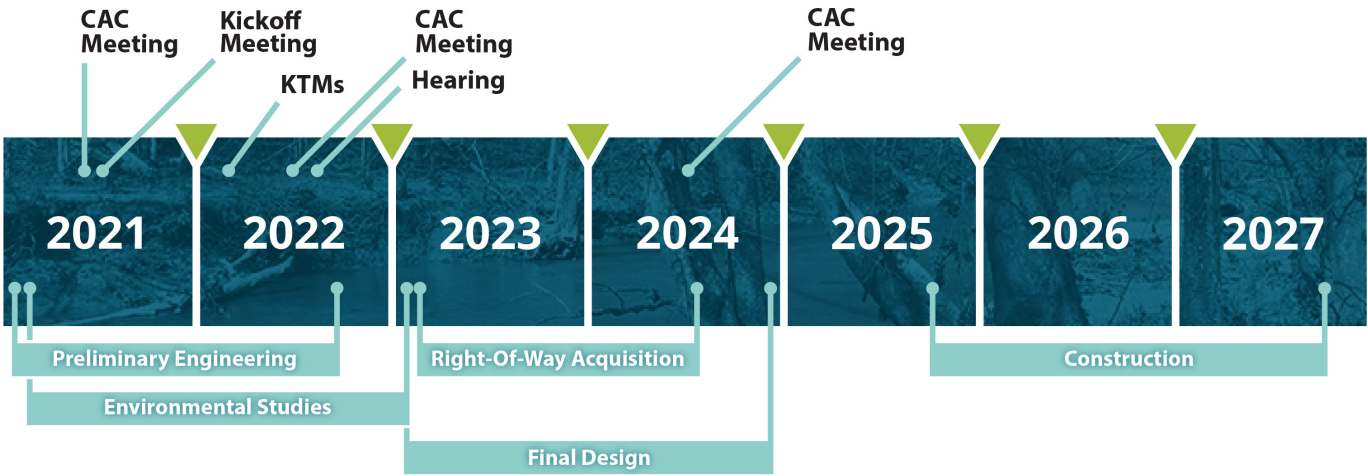
Need:
Improve safety, mobility and accessibility in southern Harrison County.

- Hilly, narrow, and often winding roadways with multiple 90-degree turns and poor sightlines are a safety concern.

Purpose:
Provide safer, more direct east/west connectivity in southern Harrison County.

- Provide east/west state highway facility connection that meets modern design standards.
- Improve transportation safety for commerce, education, recreation, and emergency services.
- Improve access from SR 337/SR 11 to SR 135 to support future development potential in southern Harrison County.

Project Timeline



Engagement

Two-way communication with the public, stakeholders, and resource agencies is a critical component of the environmental study process. Stay engaged with the process by filling out the comment sheet or contacting the project team directly. To receive regular project updates, sign up for email alerts at the sign in sheet or on the project website. Contact information for project representatives is provided below.

Contact Information

A comment form is included as a separate sheet in this handout. Share your knowledge of potential concerns by filling it out and dropping in the comment box.

Completed forms can also be mailed to **6200 Vogel Road, Evansville, IN 47715.**

You are welcome to email comments to **dgoffin@lochgroup.com.**



www.sr11extension.com



Project team:
dgoffin@lochgroup.com

INDOT Seymour District:
secommunications@indot.IN.gov



Project team:
812-893-0642

INDOT Seymour District:
855-INDOT4U (463-6848)