

## Installation Instructions

### BaseGrid GB-700 Series

#### Guidelines:

Before any installation is started, be sure to verify:

- Model of grid and frame
- Size of grid and frame
- Product color
- That there are no visual defects or damage from shipment

**Important: No returns will be accepted after the material has been installed.  
Failure to follow these installation instructions may void your warranty.**

#### Recessed installation instructions:

1. Prepare a recess in the concrete flooring (block out) where the grid will be installed. The recess should be at least 1" deeper than the total height of your grid and frame; consult your shop drawing for proper depth. Block out an area 6" wider than the outside dimensions of the frame in both directions. This will allow 3" on all sides to maneuver the frames into place.
2. Place the frame in the recess. Use shims to raise frame to exact height of finished floor and level the frame. All frame corners are mitered.
3. Place the frame in the recess. Use shims to raise frame to exact height of finished floor and level the frame. All frame corners are mitered.
4. Pour concrete (using non-shrinking grout – sand coat is not recommended) around perimeter of frame. There must not be any free space between the grid and frame (or the pan, if applicable) and the liquid cement.
5. Level the concrete. Frames without pans use a board slightly smaller than the frame opening and level the concrete in each section to be flush with the leg of the frame. It is important to ensure the concrete (using non-shrinking grout) is smooth and level with the lip of the frame so the grid lies perfectly flat and will not shift.
6. Ensure there will be no traffic of any kind on the frames during the drying period of the non-shrinking grout.

7. Before the concrete hardens, verify that the dimensions are correct and frame is square and level.
8. After concrete has hardened, install plywood into the recess to fully protect the frame edges until just before the entrance is opened and the grids are installed.
9. Clean the frames and recess before installing grids; debris cannot be tolerated between the frame and grid.

#### **BaseGrid Replacement Instructions:**

1. Remove existing grids from recessed frame.
2. Thoroughly clean all debris from the level bed pit of the frame. Use a heavy-duty scraper to aggressively scrape accumulated dirt from concrete surface. If pit is not properly cleaned, new grids will rock in place or shift and void warranty.
3. Thoroughly sweep or use a Shop-Vac to clean out loose debris.
4. Once entry pit is fully prepared, removed replacement grids from skid and piece into place.
5. Your new grids will give you quality service if properly maintained during years of usage.

#### **BaseGrid Field Fabrication Instructions:**

1. Place grid to be cut on sturdy tabletop surface. On one end of the table, fasten a straight edge bar or angle piece to serve as a stop edge for one end of the product. Be sure bar is square on the table.
2. Butt one end of the grid tight to bar fastened to table.
3. Measure to desired length to be cut and mark product with fine tip black marker. Remove black vinyl cushions on bottom of grid if needed for level cutting surface.
4. If trimming only  $\frac{1}{4}$ " or so, cut carefully with a portable band saw. Prior to cutting it would be ideal to clamp an additional bar or straight edge to top of product to hold grid steady. If trimming more than  $\frac{1}{4}$ " or so, a circular saw with a sturdy carbide-tipped blade would work just as well. Use a straight edge or angle piece for saw to travel against to achieve a nice even cut. Be sure to clamp straight edge to product prior to cut.

5. After cut, clean any smudges or markings with lacquer thinner. If Phillip head screws have been cut off, re-install new screws as needed to secure tread in rails. Brush out ends of tread, then singe with a propane torch (on low setting).
6. Clean up product and return to service.

Potential LEED Credits  
for projects using BaseGrid Series  
(based on LEED-NC, version 3)

- **Indoor Environmental Quality Credit 5 (1 point): Indoor Chemical & Pollutant Source Control**  
BaseGrid Series products are intended for permanent installation. To qualify for IEQ Credit 5, the product must be at least 10 feet in length in the primary direction of travel. BaseGrid Series products may contribute to LEED IEQ Credit 5.
- **Materials & Resources Credit 4 (1-2 points): Recycled Content**  
BaseGrid Series products are manufactured from approximately 49% pre-consumer recycled content. BaseGrid Series products may contribute to LEED MR Credit 4.
  - BaseGrid Series products with HD carpet or polybrush insert have 45.8% pre-consumer recycled content.
  - BaseGrid Series products with all other inserts have 38.30% pre-consumer recycled content.
- **Materials & Resources Credit 5 (1-2 points): Regional Materials**  
The manufacturing facilities are located in Minnesota, USA. Depending upon the project location, using these products may qualify for LEED MR Credit 5.

*Note: After downloading this spec, the Specifier must choose the correct Finish, Insert and Frame options and delete all other options to produce an accurate specification.*

**BaseGrid GB-700 Series**

## **MASTER SPECIFICATION**

### **SECTION 12 48 13 FURNISHINGS – BASEGRID ENTRANCE SYSTEMS**

#### **PART 1 - GENERAL**

##### **1.01 SUMMARY**

- A. Section includes: [Entrance matting systems, including aluminum treads and frames]
- B. Related Sections: The following sections contain requirements related to this section:
  - 1. Grouting frames into recess; refer to Section 03 30 00, "Cast-in-Place Concrete" and Section 03 60 00, "Grouting."
  - 2. Special requirements of various flooring types; refer to Section 09400, "Terrazzo."

##### **1.02 REFERENCES**

- A. American Society for Testing and Materials (ASTM)
- B. The Aluminum Association
- C. The Carpet and Rug Institute (CRI)
- D. The National Floor Safety Institute (NFSI)
- E. Other referenced documents
  - 1. LEED v3 and LEED v4

##### **1.03 SYSTEM DESCRIPTION**

- A. Performance Requirements: Provide [aluminum entrance rigid grid system], which has been manufactured and installed to maintain performance criteria stated by Manufacturer without defects, damage or failure.

##### **1.04 SUBMITTALS**

- A. General: Submit listed submittals in accordance with the Conditions of the Contract and Division 1 Submittal Procedures Section.
- B. Product data: Submit product data, including Manufacturer's specification sheet and installation instructions for specified products. Include methods of installation and substrate preparation for each type of substrate.
- C. Sustainable Design Submittals: For projects requiring LEED submittal based on LEED v3
  - 1. Submit documentation substantiating that BaseGrid GB-700 Series contains a minimum of 45.8% (HD carpet inserts) and 38.3" (all other) pre-consumer recycled content and therefore contributes to Materials & Resources Credit 4.

2. Submit documentation substantiating that the project is located within 500 miles of the manufacturing facility and therefore contributes to Materials & Resources Credit 5
  3. Submit documentation substantiating that the project has permanently installed BaseGrid GB-700 Series at least 10 feet in length and therefore contributes to Indoor Environmental Quality Credit 5.
- D. Sustainable Design Submittals: For projects requiring LEED submittal based on LEED v4
1. Submit documentation substantiating that BaseGrid GB-700 Series contains a minimum of 45.8% (HD carpet inserts) and 38.3" (all other) pre-consumer recycled content and therefore contributes to Materials & Resources Credit.
  2. Submit documentation substantiating that the project is located within 100 miles of the manufacturing facility and therefore contributes to Materials & Resources Regional Material Credit.
  3. Submit documentation substantiating that the project has permanent entryway system at least 10 feet in length that is maintained on a weekly basis and therefore contributes to Indoor Environmental Quality Enhanced Indoor Air Quality Strategies Credit.
- E. Shop drawings: Submit shop drawings showing layout, profiles and product components, including anchorage, accessories, finish colors, patterns and textures.
- F. Samples: Submit samples for each type and color of exposed entrance mat, frames and accessories required. Provide samples of mat materials.
- G. Quality Assurance Submittals: (1) Certified test reports showing compliance with specified performance characteristics and physical properties, and (2) Manufacturer's Installation Instructions.
- H. Closeout Submittals: (1) Cleaning & Maintenance Data (Include methods for maintaining installed products and precautions against cleaning materials and methods detrimental to finishes and performance), and (2) Warranty.

#### **1.05 QUALITY ASSURANCE**

- A. Standard rolling load performance: 400 lb./wheel rating for the BaseGrid GB-700 product. (testing used 1,000 passes) ASTM F2753 Rolling Load Over Resilient Floor Covering.
- B. Slip resistant in accordance with ASTM C1028 Coefficient of Friction, minimum 0.60 for accessible routes.
- C. Flammability in accordance with ASTM E648, Class 1, Critical Radiant Flux, minimum of 0.45 watts/m<sup>2</sup>. Exceeds Class 1 rating as specified in NFPA Life Safety Code 101 and IBC 804.2 Classification.
- D. Corrosive resistant surpassed in PPS 1001 Corrosion testing.
- E. Single Source Responsibility: Obtain floor mats/grids and frames from one source of a single manufacturer.
- F. All materials are sourced domestically in the continental United States, with 99.8% of sourced materials being manufactured domestically. Finished product manufactured 100% in the United States in accordance with BAA.

#### **1.06 SEQUENCING/SCHEDULING**

- A. Ordering: Comply with Manufacturer's ordering instructions and lead-time requirements to avoid construction delays.
- B. Delivery: Deliver materials in Manufacturer's original, unopened, undamaged packaging.
- C. Storage: Store materials in temperature and in humidity conditions recommended by Manufacturer and protect from exposure to harmful weather conditions.
- D. Installation: Except as otherwise indicated herein, sequencing or scheduling for performance of work of this section in relation with other work is Contractor's option. Delay installation of mats until near time of substantial completion for the project.

## 1.07 PROJECT CONDITIONS

- A. Temperature: Maintain temperature where products will be installed before, during and after installation as recommended by Manufacturer.
- B. Field Measurements: Where possible, verify actual measurements by field measuring before fabrication and include measurements in shop drawings. To avoid construction delays, coordinate field measurements and fabrication schedule based upon construction progress.
- C. Recessed Conditions: It is imperative that the concrete recess is entirely flat and smooth for successful installation. If a concrete contractor is responsible for forming the recess, the pour dimensions may require leveling grout to achieve the proper depth and a smooth finish. The final recess depth must match the specified product and must be field verified. Also, for proper frame installation, the side walls of the concrete recess must also be straight and smooth. Variances with the recess and side walls must be adjusted/corrected prior to product installation.

## PART 2 - PRODUCTS

### 2.01 ACCEPTABLE MANUFACTURER

- A. Provide BaseGrid GB-700 Series by **Base Specialties, Inc.**, 525 First Street, Farmington, MN, 55024; telephone 866-391-6216 or 651-463-2273; fax 651-463-2320; [www.base-spec.com](http://www.base-spec.com).

### 2.02 MATERIALS

- A. Tread rails and gridlock shall be extruded 6063-T6 alloy. Units shall be manufactured with an 1/8" space between rails for drainage, complete with soft-durometer vinyl cushions, supplied in mill finish unless otherwise indicated (anodized – clear, light bronze, medium bronze, dark bronze or black).
  - 1. LEED v3
    - a. IEQ Credit 5: BaseGrid GB-700 is designed for permanent installation.
    - b. MR Credit 4: With HD carpet inserts, 45.8% pre-consumer recycled content; with all other, 38.3% pre-consumer recycled content.
    - c. MR Credit 5: Material must be manufactured within 500 miles of project location.
  - 2. LEED v4
    - a. MR Sources of Raw Materials Credit: 45.8% (HD carpet inserts) and 38.3% (all other) pre-consumer.
    - b. MR Regional Material Credit: Material must be manufactured within 100 miles of project location.
    - c. IEQ Enhanced Indoor Air Quality Strategies Credit: BaseGrid GB-700 Series is a LEED acceptable permanent entryway system.
- B. Tread insert options for BaseGrid GB-700:

1. **MonoScape™ HD Carpet Inserts** shall meet the Carpet and Rug Institute's standard for good indoor air quality. Fibers shall include a minimum of 100, 12 mil monofilament fibers per square inch and colorfast, solution dyed nylon. Available in one of 12 standard colors as offered by Manufacturer. Each carpet fiber and monofilament shall be fusion-bonded to a rigid two-ply backing to prevent fraying and supplied in continuous splice-free lengths. Carpet weight shall be 33 oz./sq. yd.
2. **Polybrush Inserts** shall be solution-dyed polypropylene fibers with 4,500 total denier, available in one of three standard colors as offered by the Manufacturer. The textured fibers have ultraviolet blockers and color as an integral part of the filament. Each polybrush carpet fiber and monofilament shall be fusion-bonded to a rigid two-ply backing to prevent fraying and supplied in continuous splice-free lengths. Carpet weight shall be 33 oz./sq. yd.
3. **Vinyl Inserts** shall include a flexible dual durometer vinyl insert in any one of three colors as offered by Manufacturer.
4. **Vinyl Abrasive Inserts** shall include a flexible abrasive grit tape, bonded to a rigid vinyl tread insert. Tread insert shall be supplied in black, complete with one of five abrasive colors as offered by Manufacturer.
5. **Serrated Aluminum Rails** shall be extruded 6063-T6 alloy. Serrated aluminum inserts shall be supplied in mill finish, unless otherwise indicated (anodized – clear, light bronze, medium bronze, dark bronze or black).

C. Framing for Aluminum BaseGrid Series

1. **L-7T - Aluminum Recessed "Tapered" Frame** for BaseGrid GB-700 Series shall have a vertical leg that is 1-7/8" tall and 3/8" thick with a tapered horizontal leg that is 2-7/8." Recessed frame shall be extruded 6063-T5 alloy. Frame color shall be supplied in mill finish unless otherwise indicated (anodized – clear, light bronze, medium bronze, dark bronze or black).
2. **L-7B – Aluminum Recessed "Block" Frame** for BaseGrid GB-700 Series shall have both vertical and horizontal legs that are 2" tall and 3/8" thick. Recessed frame shall be extruded 6063-T5 alloy. Frame color shall be mill finish unless otherwise indicated (anodized – clear, light bronze, medium bronze, dark bronze or black).

## 2.03 PRODUCT SUBSTITUTIONS

Substitutions: No substitutions permitted.

## PART 3 – EXECUTION

### 3.01 SUBSTRATE PREPARATION

- A. Examine substrates and conditions where floor mats will be installed. Do not proceed with installation until unsatisfactory conditions are corrected. Subfloor shall be clean and dry, and within acceptable tolerances.

### 3.02 INSTALLATION

- A. Sizes: Shop-fabricate units of floor mat to greatest extent possible in sizes as indicated. Where not indicated otherwise, provide single unit for each mat installation, but do not exceed manufacturer's maximum size recommendation for units intended for removal and cleaning. Where joints in grids are necessary, space symmetrically and away from normal traffic lanes. Miter corner joints in framing elements with hairline joints or provide prefabricated corner units without joints. Where possible, verify sizes by field measurement before shop fabrication.



- B. Accessories: [Where indicated for recessed or wall-to-wall installations, provide aluminum framework as recommended by Manufacturer.]
- C. General: Strictly comply with Manufacturer's installation instructions and recommendations. Coordinate installation with adjacent work to ensure proper clearances and to prevent tripping hazards.

**3.03 CLEANING AND PROTECTION**

- A. General Cleaning: Refer to Manufacturer's Cleaning and Maintenance Instructions.
- B. Owner's Personnel: Instruct Owner's personnel in proper maintenance procedures.
- C. Protection: Protect installed product and finish surfaces from damage during construction and until acceptance.

## Cleaning and Maintenance Instructions

### Recessed Aluminum Floor Mats

The following cleaning and maintenance instructions are for Base Specialties products BaseMat Series, BaseTread Series, and BaseGrid Series. Exceptions to this and instructions for BaseGrille products are noted separately below.

#### **General:**

- During the winter season, remove product and clean rails once per week. During other seasons, once per month should be sufficient.
- Debris between the rails should be removed during the cleaning process. Each time the rails are cleaned, make sure there is no debris underneath in the recess; this will prevent product from warping due to an uneven substrate and prevent long-term problems. (Vacuuming is the most effective method for this cleaning.)
- If the units are above a drain, ensure that nothing is blocking the water flow to the drain.
- Never apply wax or other polishing products to the surface of the units; this would create a potential hazard.

#### **Specifics:**

- Clean aluminum surfaces with soap and hot water, then allow mat to dry.
- If applicable, periodically clean carpet and scraping inserts with a hot water extraction machine to remove soil and restore pile.

#### **Exceptions (in addition to above):**

- When cleaning products manufactured with rubber hinges (BaseTread GB-200 Series, BaseTread GB-500 Series, and BaseMat MB-400 Series), inspect the hinges and locking mechanism to ensure that all parts are securely attached and are functioning properly. Any parts not functioning properly should be replaced to avoid further problems.
- A stainless-steel cleaner can be utilized, if desired, to maintain surface shine on BaseGrille products (stainless steel); Simple Green or Sheila Shine are good options. Just follow the manufacturer's directions on whatever cleaner is chosen.

Replacement inserts are available via our website, [www.base-spec.com](http://www.base-spec.com), or phone 1-866-391-6216 for your local representative contact information.

## Warranty

Base Specialties, Inc. provides a basic warranty against defects in materials and workmanship for the products listed below. All below warranty periods start on the date of purchase from Base Specialties, Inc.

<b>BaseMat</b>	<b>2 year limited</b>
<b>BaseTread</b>	<b>2 year limited</b>
<b>BaseGrid</b>	<b>2 year limited</b>
<b>BaseGrille</b>	<b>5 year limited</b>

The warranty is valid only when the material is used for the purpose intended, and installed and maintained strictly in accordance with installation, cleaning and maintenance instructions available on [www.base-spec.com](http://www.base-spec.com) or by calling our product specialists at 1-866-391-6216.

The obligation under this warranty is limited to the original user and to the replacement, repair, or prorated refund of said products. The labor costs of removing and/or re-installing replacement materials and associated freight costs are not covered under this warranty.

In order to make a claim on the warranty, send detailed photographs of problem area to Base Specialties, Inc. Attention: Customer Service. If materials are requested for inspection to fulfill this warranty, materials must be returned freight prepaid. Freight charges will be credited when goods are deemed warrantable.

Proof of a damaged product will be evaluated at the discretion of Base Specialties, Inc.

Base Specialties, Inc. reserves the right to determine final warranty coverage.

# Carpet Insert Color Selector

---

2020-2021

**BASEMAT, BASETREAD, BASEGRID**

## **Premium MonoScape Carpet Treads**

Our most absorbent and durable carpet tread designed to scrape debris and absorb moisture. Features dual-action premium 33 oz. solution-dyed nylon carpet with 10 mil monofilament fibers for ultimate scraping performance.

***NEW***



**Shadow**



**Espresso**



**Suede**



**Java**



**Spice**



**Silvermine**



**Charcoal**



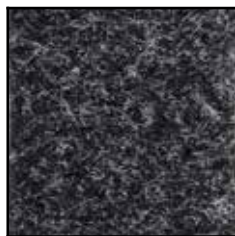
**Fernwood**



**Denim**



**Cast Iron**



**Black Iron**



**Onyx**



**Gray Castle**

# Alternate Treads Selector

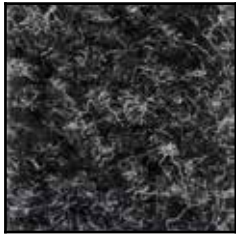
---

2020-2021

**BASEMAT, BASETREAD, BASEGRID**

## Premium Polybrush Tread with Polypropylene Fibers

— brushing fibers clean without retaining moisture; for interior and exterior use



**Charcoal**



**Chocolate**



**Gray**

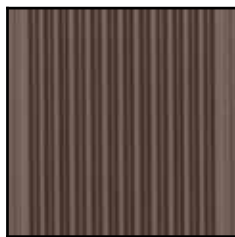
## Durable Serrated Tread

— waterproof treads with rigid serrations providing optimum scraping ability

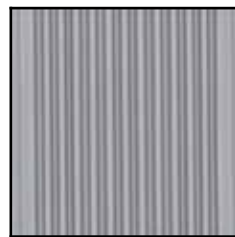
### Vinyl Inserts



**Black**

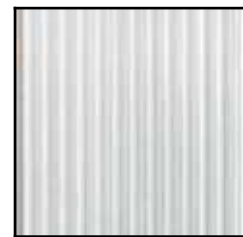


**Brown**



**Gray**

### Metal Insert



**Mill**

\*anodized options  
available

## Rugged Vinyl Abrasive Tread

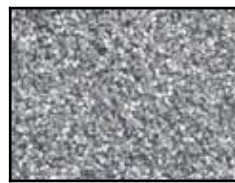
— embedded grit particles provide sure footing; ideal for indoor applications



**Black**



**Dark Brown**



**Gray**



**Brick Red**