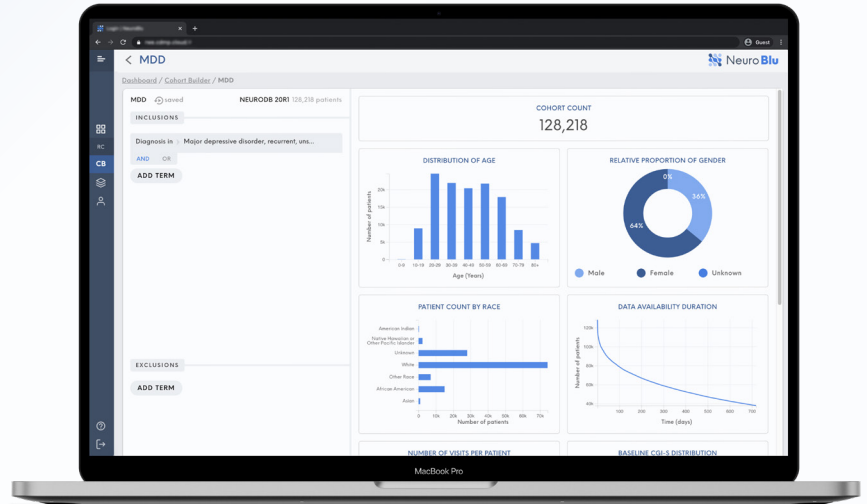




Behavioral Health Real-World Data & Analytics Platform



THE URGENT NEED

There is a debilitating evidence gap that inhibits research and innovation, stemming from inherent limitations in behavioral health: complex disease etiologies, lack of quantifiable biomarkers, and institutional silos.

OUR SOLUTION

NeuroBlu is a data and analytics platform that enables uniquely powerful evidence generation. With the most robust behavioral health database of its kind and seamless AI-powered analytic tools, NeuroBlu gives researchers, pharma, clinicians, and other industry partners the ability to create insights like never before.

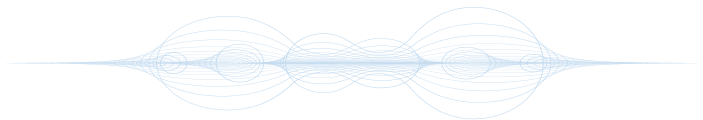
ENRICHED REAL-WORLD DATA

Home to the **largest longitudinal behavioral health Real-World Dataset**, sourced from MindLinc EHR.

560K+ patients with 50+ million rows of data, across **25+ US sites over 20+ years**. Enriched with **custom natural language processing** to transform psychiatry notes into quantifiable data.

INSIGHTS

Gather scientifically validated, clinically meaningful Insights from Real-World Evidence.



Explore

Delve into a rich, unique database in an easy-to-use interface designed for fast and scalable queries

Analyze

Investigate research questions with an integrated Code Studio (R/Python) interface, advanced analytics packages, and our built-in Holmusk-developed code library

Visualize

Generate insights with longitudinal severity scores and NLP-derived signs and symptoms, external stressors, and side effects

VALUE

- ✔ **Research and Development:** Improve probability of technical success and reduce cycle times
- ✔ **Medical Affairs:** Investigate clinical context driving prescription behaviors and improve clinical guidelines
- ✔ **Market Access and HEOR:** Evaluate real-world comparative outcomes and enable value-based care