



CARTRACK

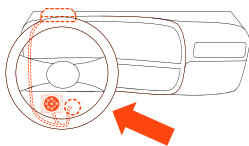
PUTTING YOU IN CONTROL

Install Guide

1

Install Unit

Plug in the cable.

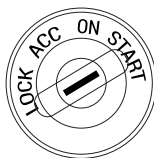


2

Turn ignition On/Off

Turn the ignition
on for 2 minutes.

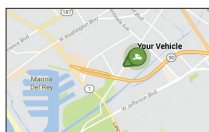
Then, turn the ignition
off for 2 minutes.



3

Vehicle Detected

Your vehicle
is now tracking!

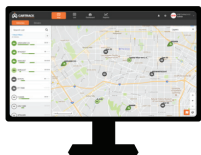


4

Login

Go to your Fleet Manager
page to see:

fleetusa.cartrack.com





CARTRACK
PUTTING YOU IN CONTROL

Need help?

Contact Our Support Team

(424) 500-8601

services@cartrack.us