

THE SAFE SYSTEM



#TowardsZero



Transport
for NSW



Centre for Road Safety

The Centre for Road Safety develops practical solutions to reduce deaths and serious injuries on NSW Roads.

Our work is guided by the Road Safety Plan 2021, which sets out our priorities and positions NSW to work towards zero.

We use the safe system approach to reduce deaths and serious injuries.

The screenshot displays the Centre for Road Safety website with a dark blue header. The header includes the NSW Government logo, 'Transport for NSW', and the 'Centre for Road Safety' title. A search bar is located on the right. Below the header is a navigation menu with links: Home, About the centre, Staying safe, Campaigns, Statistics, Speeding, Research, and Contact us.

The main content area features several key sections:

- Mobile phone detection cameras are now in operation:** A blue box with text stating that mobile phone detection cameras are now in operation across NSW, including fixed and transportable trailer-mounted cameras. It includes a 'Read more' link.
- PHONE DETECTION CAMERAS ARE NOW IN OPERATION:** A large image showing a car's interior with a phone being detected by a camera. Text reads 'PHONE DETECTION CAMERAS ARE NOW IN OPERATION' and 'KNOW THE RULES'.
- Lives Lost:** A blue box showing statistics for 2020 to date (40) and this time last year (54). It also shows 12-month period to date (341) and previous twelve months (347). Last updated: 16/02/2020.
- Serious injuries:** A blue box showing statistics for 2019 (10,447) and 2018 (11,258). Last updated: 2/1/20.
- P-plate drivers:** A section with a photo of a young man and text about finding out which vehicles are allowed to drive. Includes a 'Read more' link.
- Go Together:** A section with a photo of a car and a cyclist, text about Minimum Passing Distance enforcing safe space for cyclists. Includes a 'Read more' link.
- Road Safety Plan 2021:** A section with a photo of a road and text about reducing fatalities and serious injuries on NSW roads. Includes a 'Read more' link.
- Centre for Road Safety News:** A section with two news items: 'Mobile phone detection cameras are now in operation' and 'Used Car Safety Ratings'.
- Quick Links:** A section with links to 'NSW Road Toll Progress Report 2019', 'Road Safety and Your Work - Employers' guide', 'Speed camera locations', 'Mobile phone laws', 'Animals on country roads', 'School zones', and 'Safety Town'.
- MOTOCAP SAFETY RATINGS:** A section with the Motocap logo and text 'Choose the right gear for your ride at motocap.com.au'.



NSW Road Safety Plan

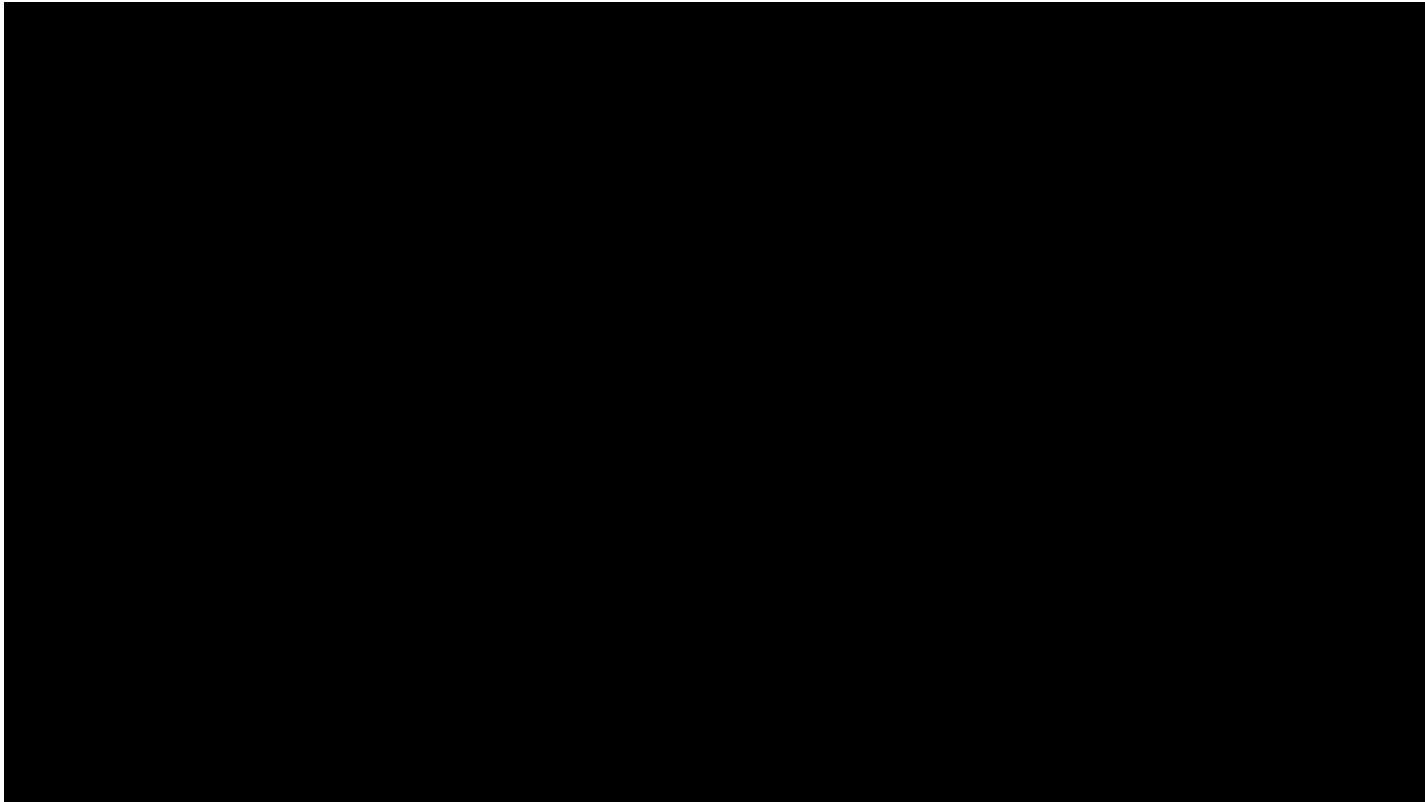


Six priority areas for transitioning to zero, including new and proven vehicle technology.

Commitments to partner with the heavy vehicle industry to increase safety features in the fleet, such as blind spot monitoring and under run protection.



What is Towards Zero





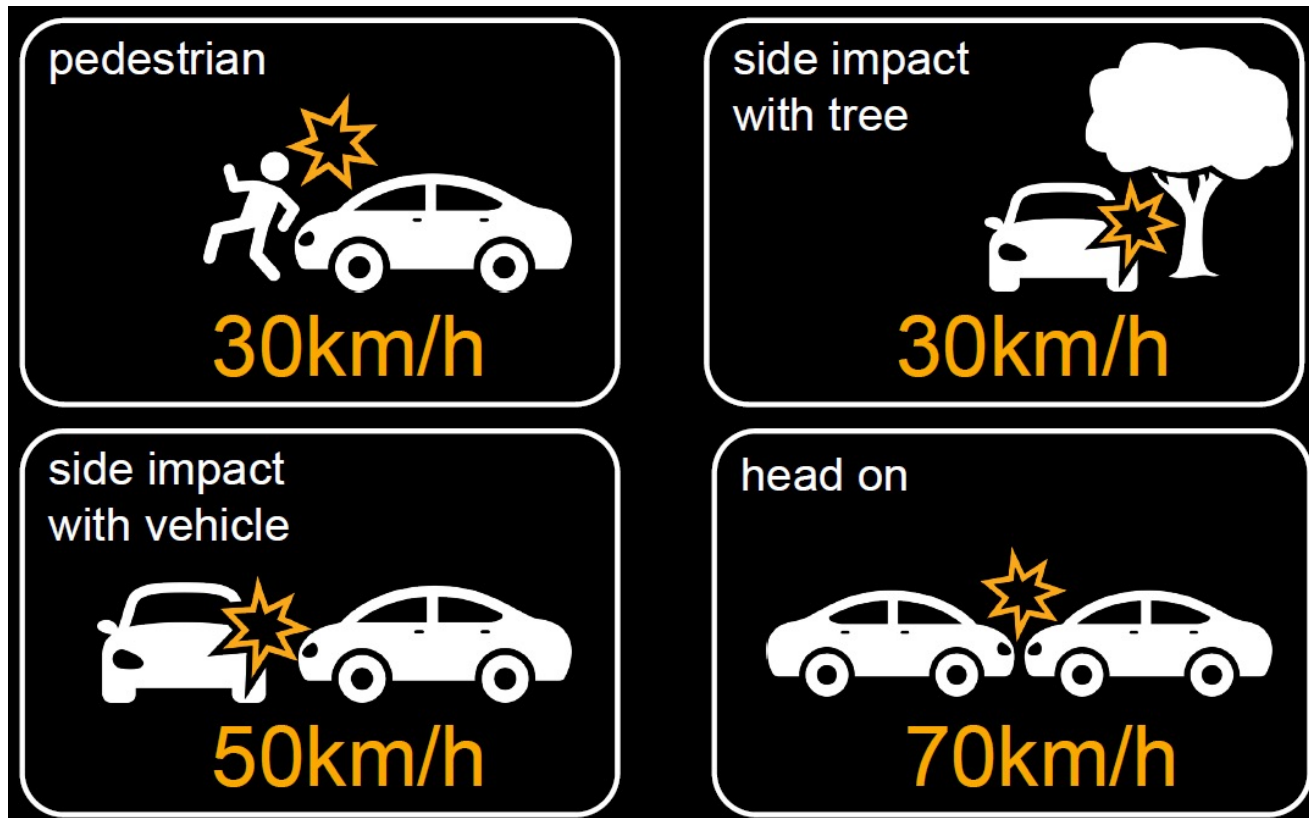
The Safe System



Key Principles

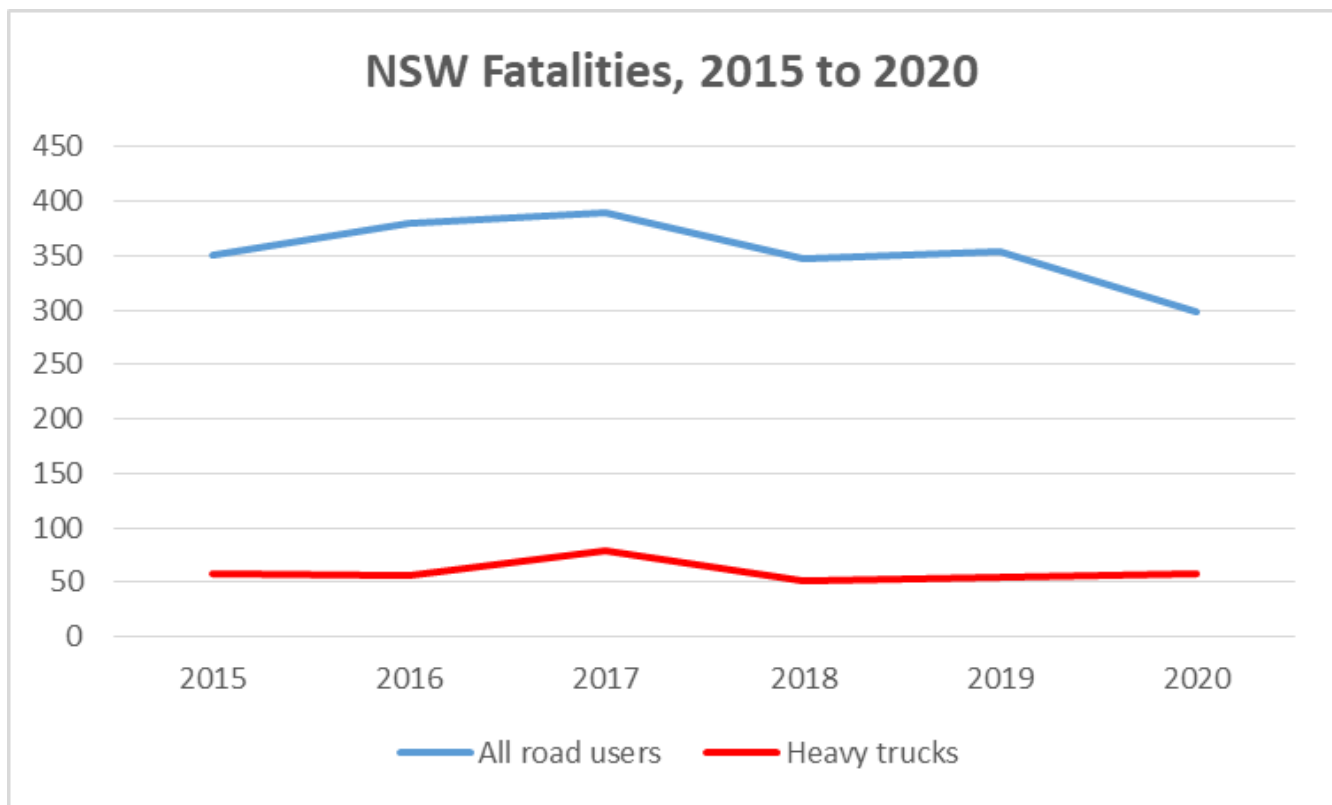
- No death or serious injury
- People make mistakes
- Shared responsibility
- People are vulnerable

Human tolerance of crash impacts



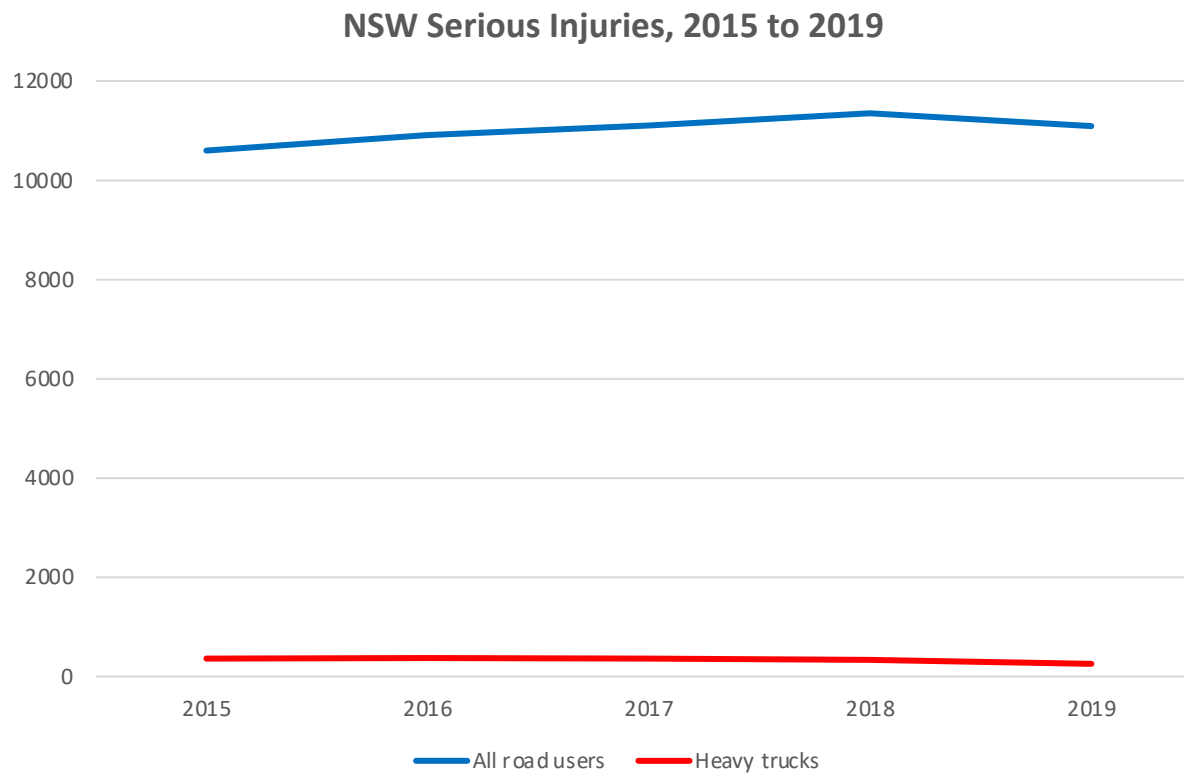


Crash statistics - Fatalities



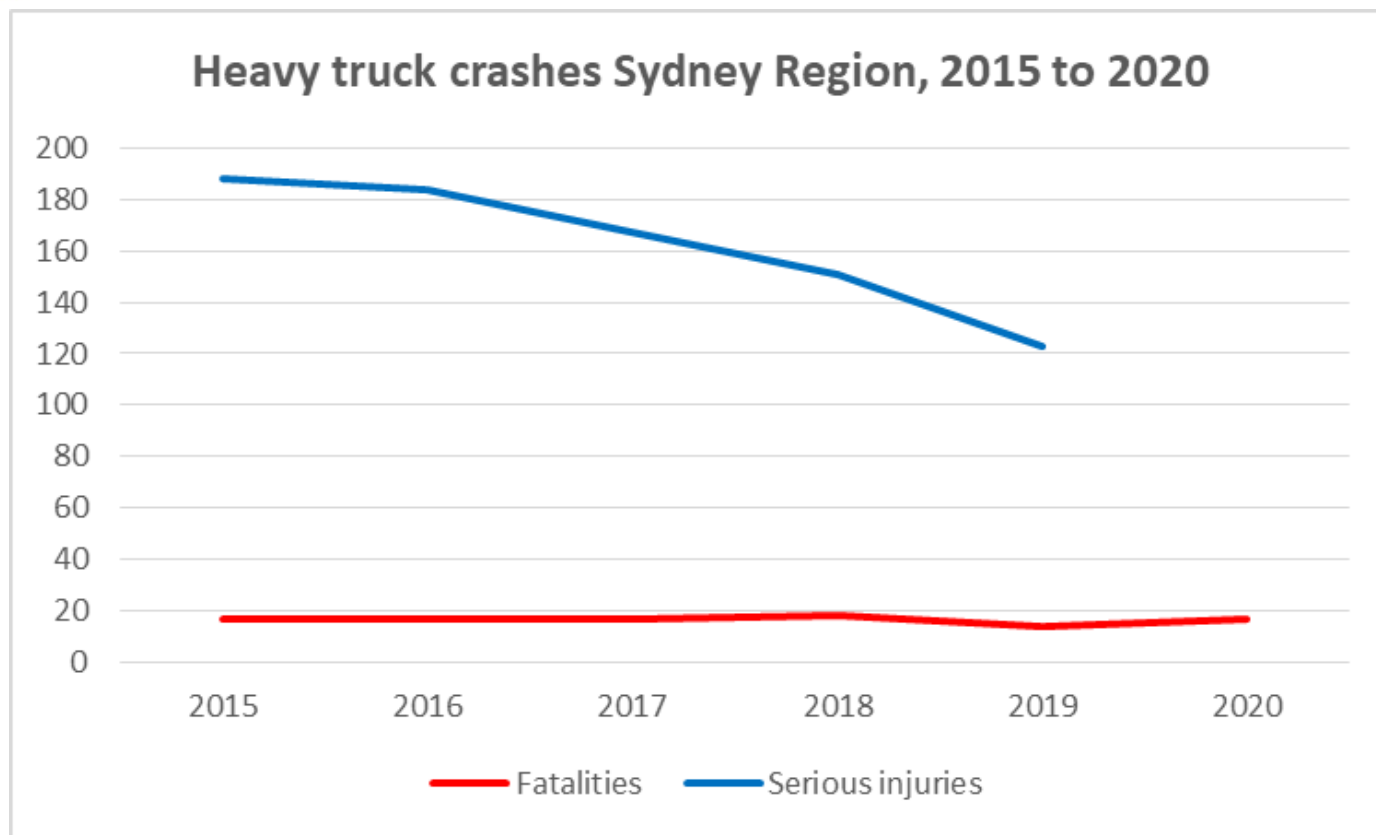


Crash statistics – Serious injuries





Crash statistics – Sydney region



Heavy truck crash statistics

FSI crashes Sydney Region, 2015 to 2019

Crash features

- 93% multi vehicle
- 63% non intersection
- 24% on local roads
- 51% 60km/h or below
- 14% speeding factor



Involved – fatal

- 24% pedestrians
- 24% motorcycles
- 5% cyclists

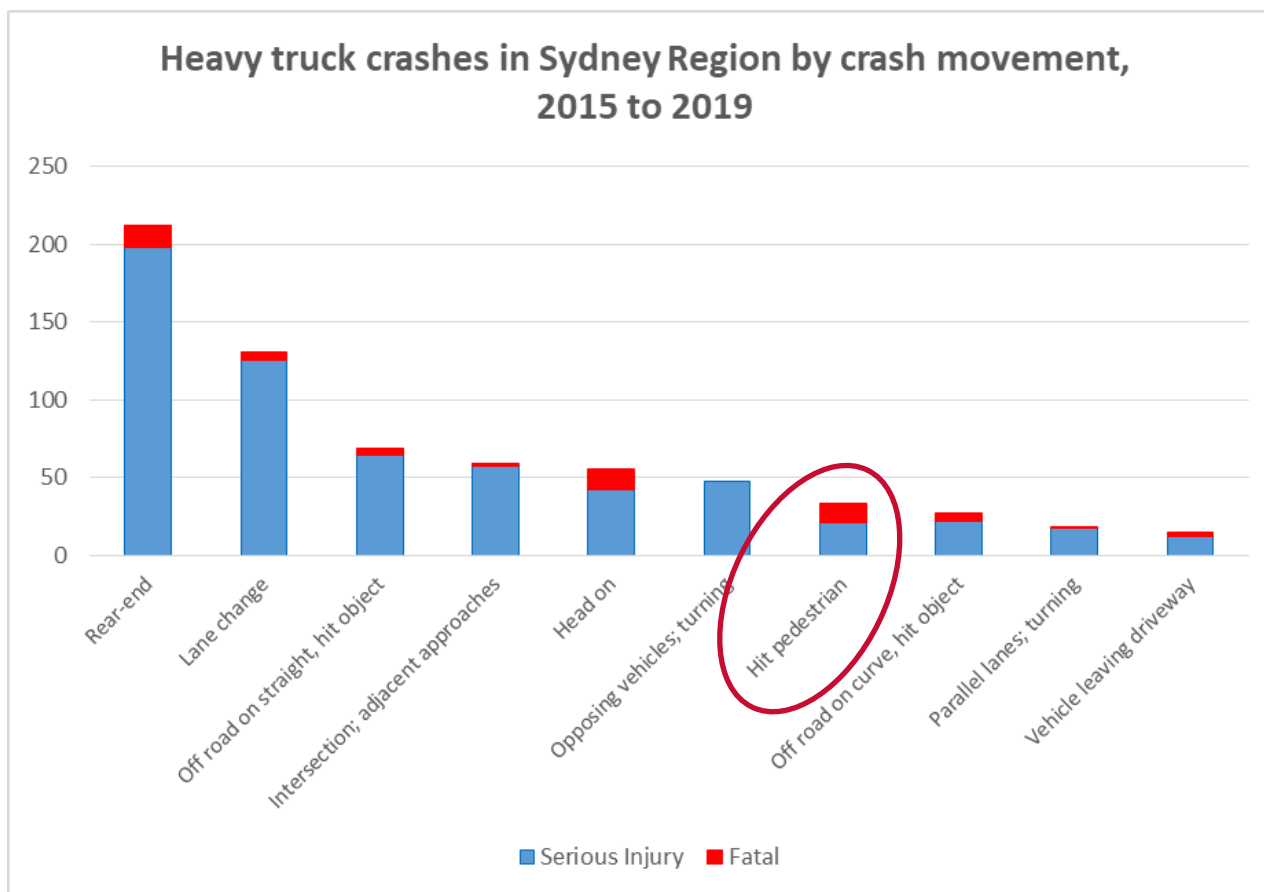
Involved – serious injury

- 9% motorcycles
- 7% pedestrians
- 3% cyclists





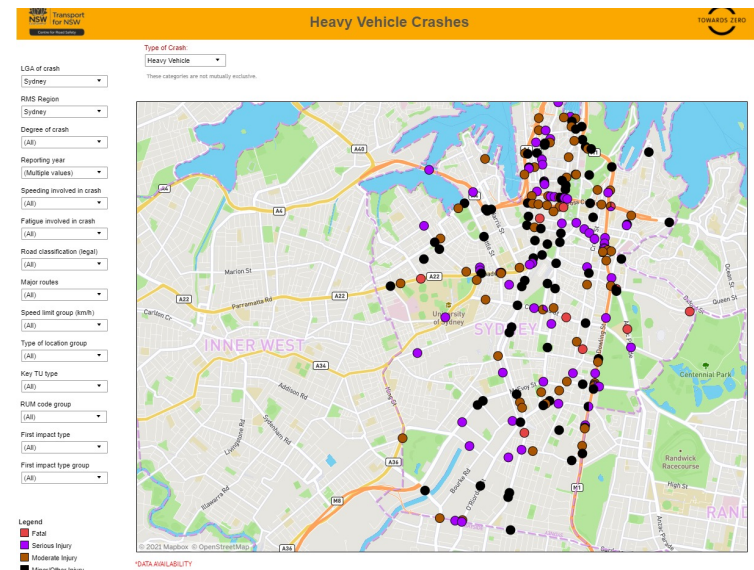
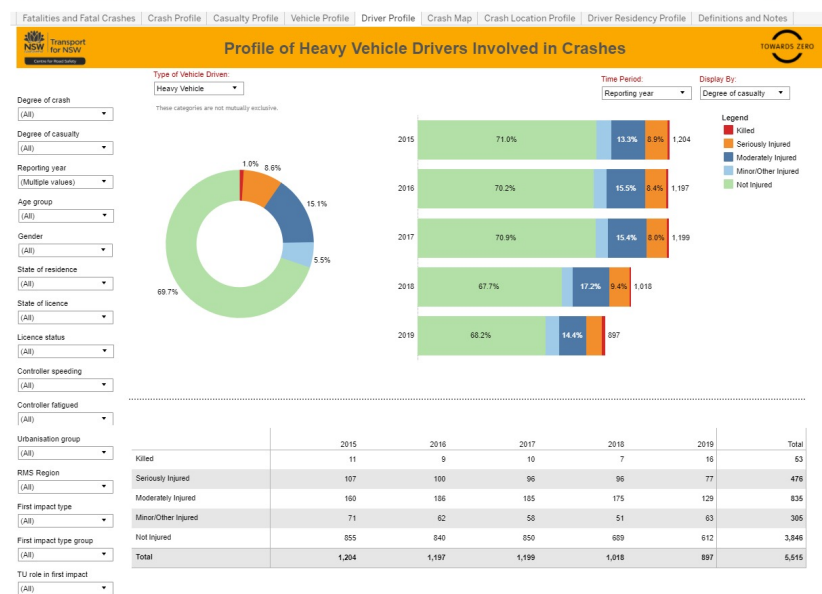
Heavy truck crash statistics





Heavy truck crash statistics

Heavy vehicles



<https://roadsafety.transport.nsw.gov.au/statistics/interactivecrashstats/index.html>



Mitigation measures – Safer vehicles

Heavy vehicle technology can greatly assist in reducing the risk, likelihood and severity of crashes.

Under run protection can prevent other road users from being dragged under the vehicle. Conspicuity markings increase others awareness of heavy vehicles while blind spot monitoring assist the driver in seeing other road users.





Mitigation measures – Safer vehicles

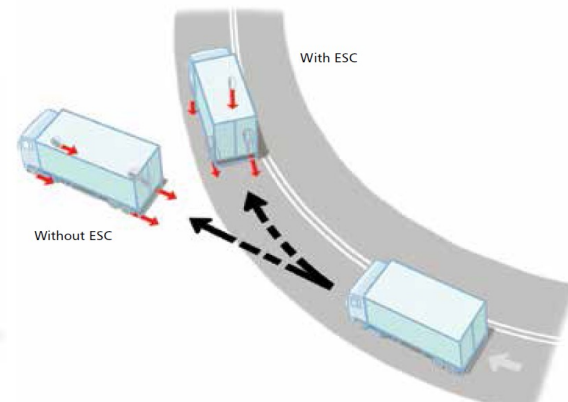
Enhanced vehicle markings



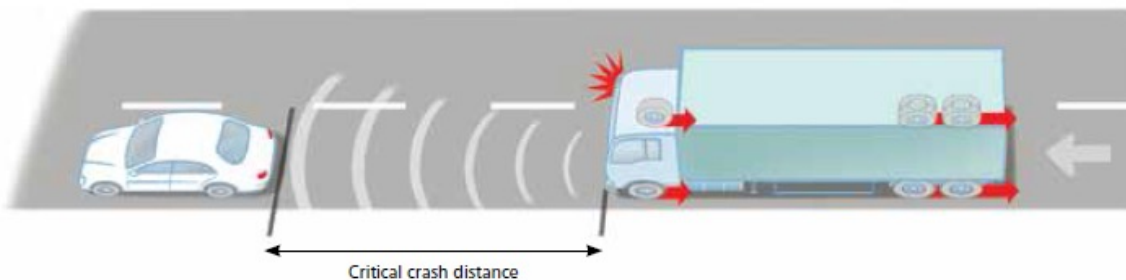
Side underrun protection



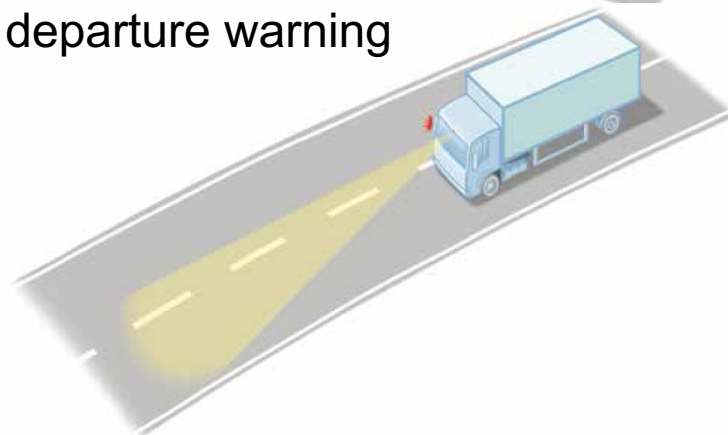
Electronic stability control



Autonomous emergency braking



Lane departure warning





Mitigation measures – Safer people

Safety campaigns and messaging are effective ways of increasing awareness and understanding of the key risks involved, and identifying safe and appropriate behaviours for all road users to follow.

Driver training can help to educate drivers on the key risks and likely road user groups that they will encounter.





Mitigation measures – Safer roads



Maintaining safe paths of travel
for pedestrians and cyclists

Green on green protection

Traffic calming to reduce
vehicle speeds

Controlling interactions with
vulnerable road users

Using state roads

Road safety audits and other
proactive risk assessments



Mitigation measures – Future initiatives

Construction Logistics and Community Safety – Australia (CLOCS-A)

- Program to improve management of work-related road safety in construction
- Public procurement of safer operators; vehicles; drivers and construction logistics management





Shared responsibility



System Designers



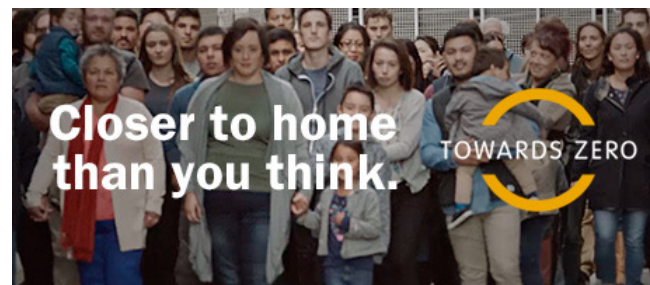
All Road Users



Business and Industry



Politicians and Public Figures



Everyone

Questions?



#TowardsZero