



Netcad GIS

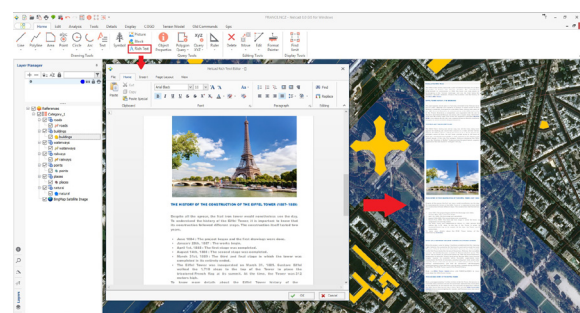
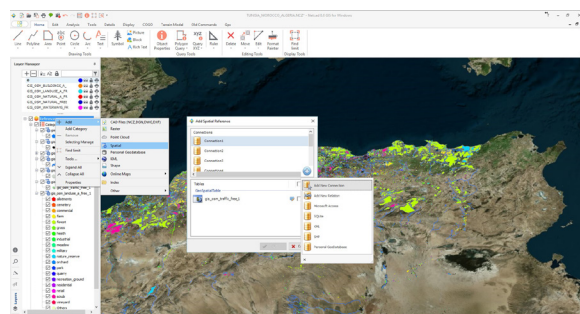
Netcad GIS produces solutions for the needs of professionals from different professional disciplines in production, analysis and management of spatial data since 1989.

Netcad GIS offers its users the freedom of the CAD environment and the advantages of the regular structure of the GIS environment at the same time. These two spatial data formats that complement each other in geographic data production processes are supported by dynamic CAD & GIS integration.

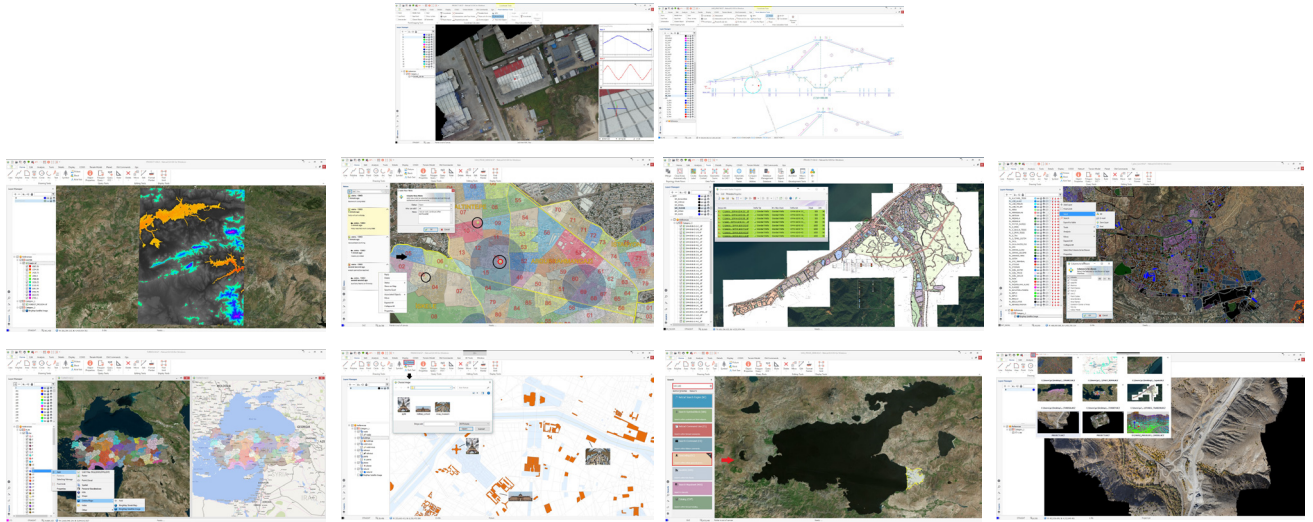
Netcad GIS is continuously developed with the agile software development philosophy, focusing on user needs and expectations. It meets the digital data needs of the user group in a wide range of options such as mapping, construction, geology, urban planning, infrastructure and other services.

## KEY FEATURES

- ✓ **Independent database structure** with rich format support
  - ✓ It supports the most popular databases worldwide.
  - ✓ It is possible to work on the database by using connections such as **PostgreSQL, Oracle, Netcad GeoSpatial, SQLite, Microsoft Access File, SQL Express, SQL Server.**
- ✓ Detailed project production with CAD data format,
  - ✓ Advanced data editing tools,
  - ✓ Full compliance with global-scale projection systems,
  - ✓ Data export options in different formats
- ✓ **GDAL Raster Library Support**
  - ✓ Raster support in Tif, LZW, ECW, GeoTIFF, Jpeg, RAS, DEM and in many more formats
  - ✓ Project management with all **rastrer elevation** data such as DEM, DTEM, SRTM, GDEM etc.
  - ✓ **Manual/Automatic raster coordinating feature, Raster format conversion support,**
- ✓ Advanced object geometry controls,
  - ✓ Dynamic positional selection capability with advanced selection tools,
  - ✓ Precise drawing with advanced object snap feature, 9 different **point snap** modes
  - ✓ User guidance with **automatic snap** where all snap modes are activated
- ✓ The ability for digitalization and query by using **point cloud data,**
  - ✓ Detailed viewing with point cloud data **elevation visualization,**
  - ✓ Simultaneous 2D & 3D object editing capability,
- ✓ Data generation in 15 different CAD object types,
- ✓ Managing files easily with **catalogue capability**
- ✓ **Advanced searching** capabilities
  - ✓ Performing searches from Command, **GeoCoding, GeoRSS,** Layout and Catalogue with Netcad GIS advanced search capabilities
- ✓ **User-defined symbology,** style definition capabilities,
  - ✓ Project management with layer manager,
  - ✓ **Unlimited layer addition** feature,
  - ✓ Defining style and output for specific layer
  - ✓ **Layer exporting** capability
- ✓ Ability to manage multi-layered projects with transparency feature
- ✓ Advanced drawing and editing tools
  - ✓ Ability to use editing tools such as Cut, Break, Extend, Edit, Combine, Round, Divide Objects, Mirroring, Separating Objects
  - ✓ Ability to customize project by adding rich text, images and text into the project
  - ✓ Ability to save frequently used object and object types as blocks



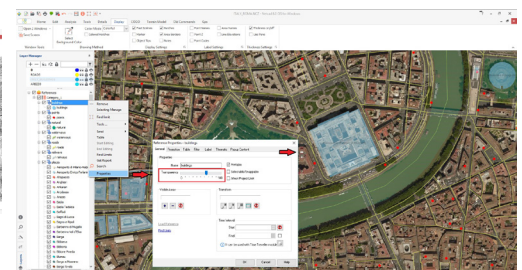
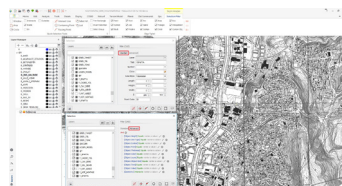
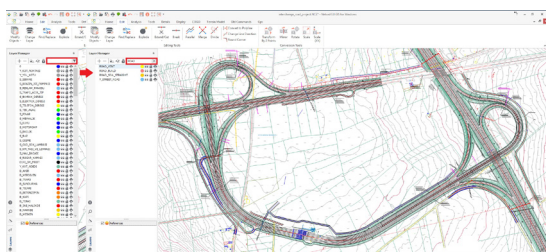
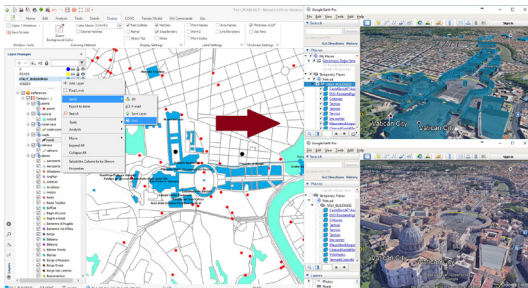




- ✓ Object properties can be queried and changed with **query tools**. Different features are listed for different objects.
- ✓ Creating high quality drawings and printouts **with cartographic drawing**
- ✓ Possibility for **quick transition between different projects**
- ✓ Two or more screens can be viewed simultaneously with the **add window** feature
- ✓ Ability to take a screenshot of the project from within the application with the **screen save** option
- ✓ Data export to Google Earth environment

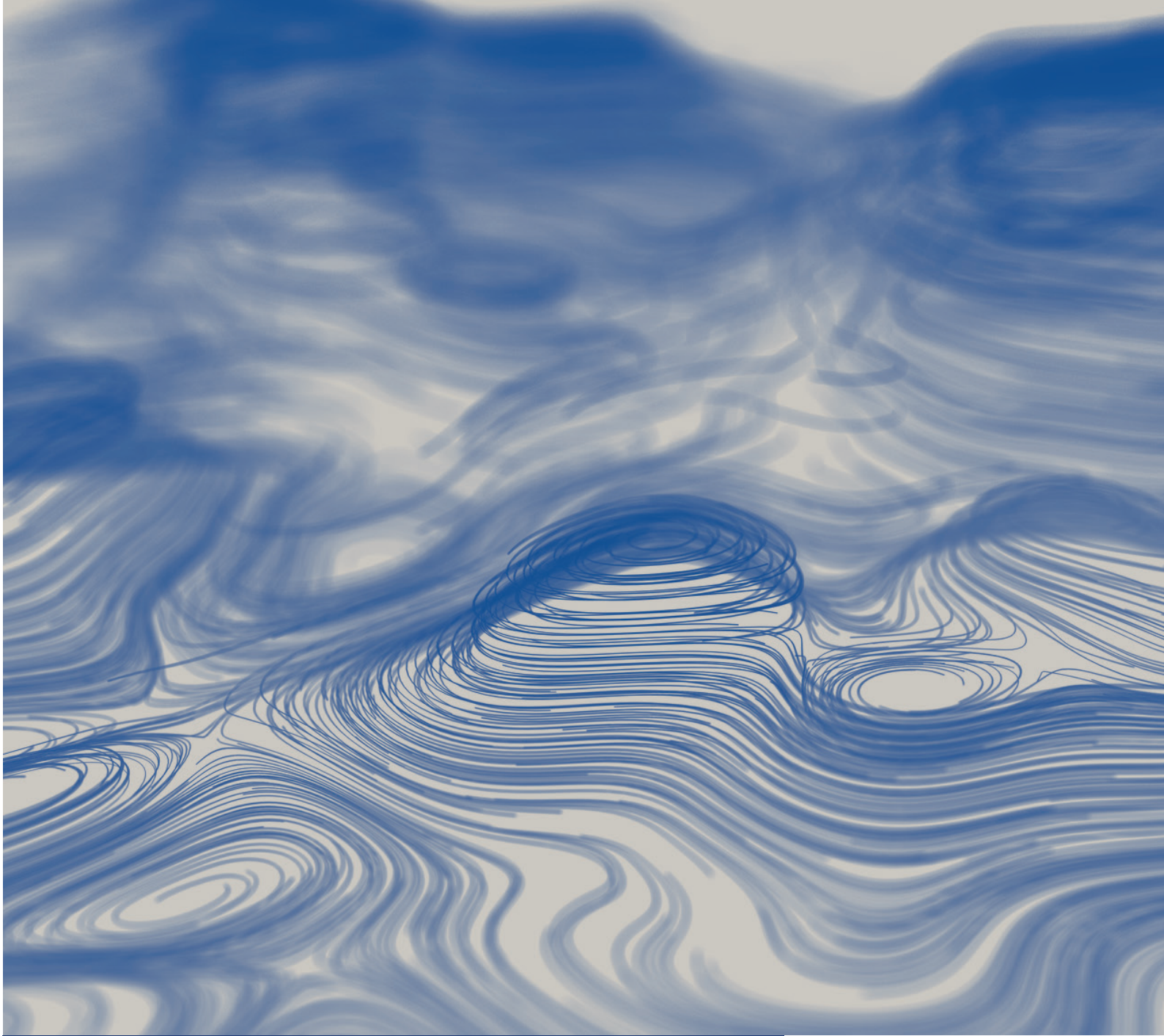
Use of **OGC-certified** online map services,

- ✓ Ability to use many online maps such as
- ✓ WMS-WFS-WMTS-WCS-CSW-TMS-Bing
- ✓ **Full compliance with DWG, GML, DXF, MicroStation, Point File, Excel Point File formats**
- ✓ Reading Excel and importing Excel files into the project
- ✓ Creation of **Template Project** for repetitive jobs
- ✓ Improved & accelerated output capabilities
- ✓ Projecting the drawing screen to the output with the **Vector Output** capability
- ✓ Automatic printouts with ready to use **Output Templates**
- ✓ Workflow models with Netcad Architect



## KEY BENEFITS

- ✓ Ability to view and manage CAD, GIS and other reference data together.
- ✓ Manage your CAD data with drawing and editing capabilities developed for your needs.
- ✓ Netcad GIS supports all data formats and allows you to work and switch between in these formats.
- ✓ With the features of CAD, GIS Conversion, Export object, Export to table, you can convert your spatial data to GIS data by protecting its attributes.
- ✓ Thanks to its advanced display settings, it offers options that are suitable for all needs of your project.
- ✓ Users can create thematic maps that are suitable for presentations and projects with the option of using CAD, GIS and reference data together.
- ✓ All modules of Netcad are compatible with relational databases such as Postgre, Oracle, SQL Server, SQLite, MS Access etc. thanks to its ability to work independently.
- ✓ Users can easily organize their data with the advanced tools of Netcad GIS.
- ✓ The experienced Netcad team will provide 24/7 technical support whenever you need.
- ✓ Users can design new tools by using their creativity and produce solutions specific to project with the macro editing features.
- ✓ Thanks to the architect, Users can save time by organizing their repetitive workflows.
- ✓ Users can analyze point cloud data with advanced visualization options.

**Ankara Headquarter**

Bilkent Cyber Plaza, B Blok No:409 Cyberpark, 06800 Ankara/TÜRKİYE

**T:** +90312 265 0510

**İstanbul Region Office**

Nidakule Göztepe, Merdivenköy Mah. Bora Sok. No:1 Kat:1 34732, İstanbul/TÜRKİYE

**T:** +90216 417 6210

[global@netcad.com](mailto:global@netcad.com)

[www.netcad.com](http://www.netcad.com)

