



netmine
Mining Solutions



NETPROMine Open Pit

Projects can be designed with all stages in a single step and design changes can be updated with the NETPROMine Open Pit Planning module.

Users can automatically generate and edit interior ramps along with the pit lines, and automatically report all solid and block model creation operations and volume results according to the needs.

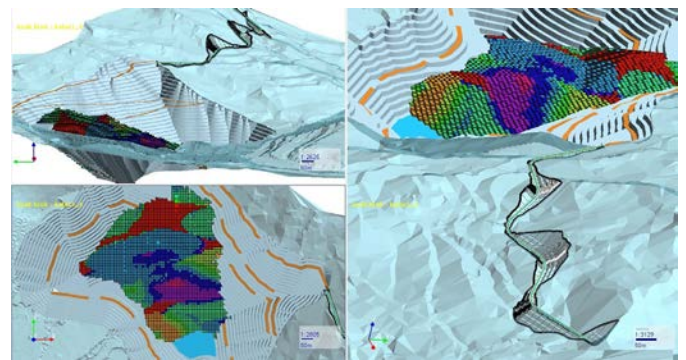
This module offers practical solutions for your Open-pit design, waste/stock design, tailings dam design, surface road design, and blasting pattern design projects.

Prerequisites

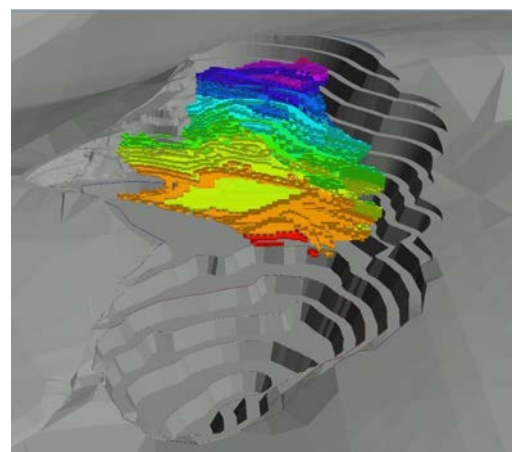
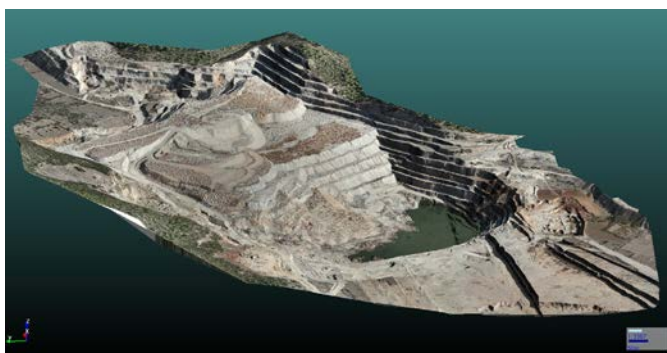
NETPROMine Geological Modeling is mandatory for all NETPROMine modules

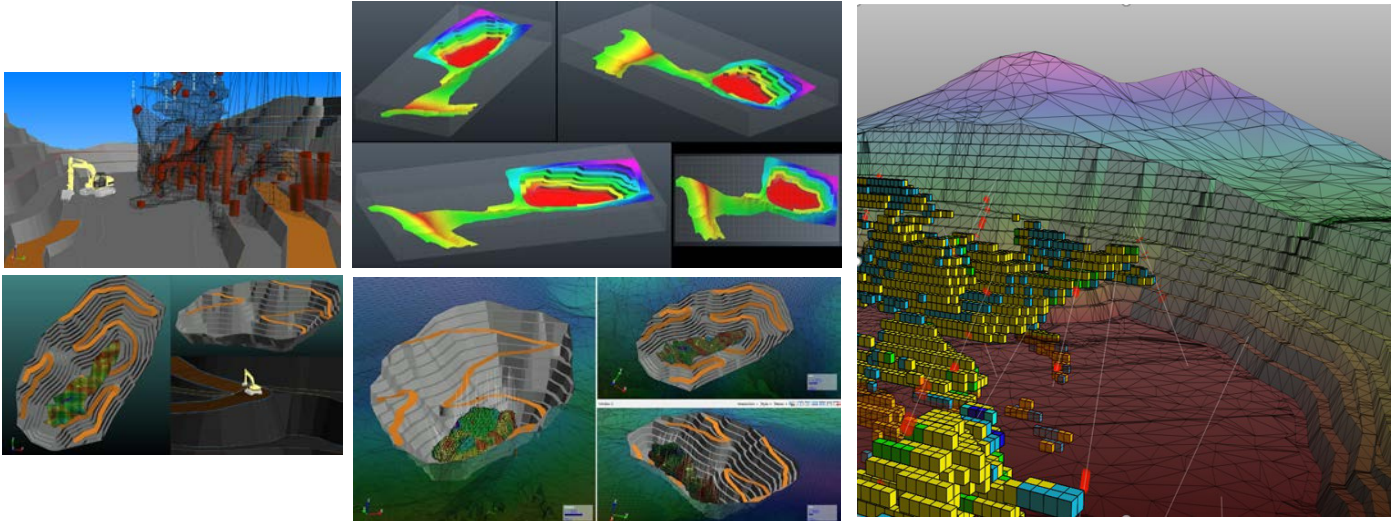
KEY FEATURES

- ✓ Advanced **open pit, waste, stockpile, tailings dam, road** and **blasting design** capabilities
- ✓ Ability to store all designs in a **single project database**
- ✓ Ability to **combine** different pit designs into a **single pit design**
- ✓ **Creating design surfaces automatically** and instantly with updating design changes
- ✓ Automatically **draping open-pit boundaries** into the topography or the specified surface
- ✓ Provides **interactive intersection** of open-pit surfaces and topography
- ✓ Provides **automatic topography intersection** with the pit lines in the upwards – outside design direction
- ✓ **Ability to create and delete** design lines individually or collectively
- ✓ Unlimited **undo and redo** options
- ✓ **Advanced CAD capabilities** to edit design lines
- ✓ Adding intermediate points to edited lines or deleting points
- ✓ **X, Y, Z fixing** options in editing operations
- ✓ Ability to design using **different bench angles** in specified areas
- ✓ Ability **to design ramps** and **control ramp slopes**
- ✓ **Switchback design** in ramp turns
- ✓ **Advanced label tools** for adding labels to design lines
- ✓ **Simplifying** design lines and **softening** them according to different methods



- ✓ Calculation tools between elevations;
 - ✓ Ability to produce **solid models** between specified minimum and maximum elevations
 - ✓ Ability to **calculate the volume** between the determined elevations
 - ✓ Ability to produce **block models** with different parameters between the determined elevations
 - ✓ Ability to produce a **solid model and report** for each bench in the specified minimum, maximum elevation and **reporting range**.
 - ✓ Ability to report all the details of the **block model selected** in Open-pit design according to the specified **elevation and grade range, bench height** information.

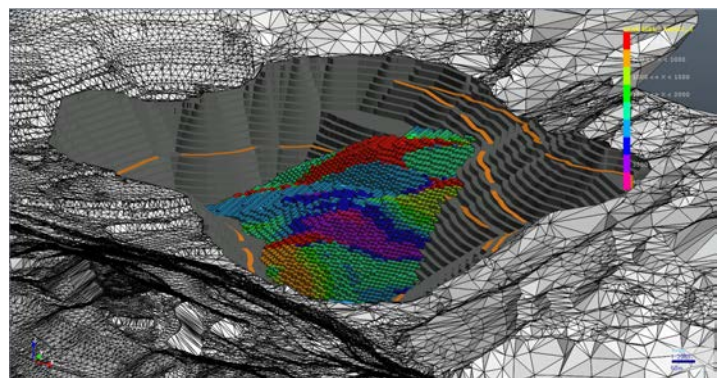




- ✓ Ability to use **advanced filtering tools** by using solid model, surface and boundary objects
- ✓ Automatically **combining design surfaces**
- ✓ **Surface cutting, simplification** and **border** generation options
- ✓ Ability to produce sections in different directions with advanced section tools, the **dynamic transition** between sections and **digitization and editing** capabilities over the sections
- ✓ **Elevation visualization** inside the open-pit surface
- ✓ Ability to **export** the produced solid and surface models in *.dxf, *.dwg, *.str formats in order to share data with other software.
- ✓ Advanced **road design** and **reporting tools** for surface haul roads
- ✓ Identification of the horizontal and vertical axes of the road, collective intervention to **horizontal/vertical curve radius and slopes**
- ✓ Ability to make customized **platform definitions**
- ✓ Automatically reporting **excavation/fill** and geometry information in excel format for the road design
- ✓ **Blasting pattern design** and **charge calculation** options using different calculation methods or by manual value entry
- ✓ Automatic generation of blast holes in the **selected area** and ability to **add blast holes** manually
- ✓ Ability to **list** and **edit** blast holes
- ✓ Ability to make **time adjustments** to the blast holes and **simulating** the blast order
- ✓ Ability to produce **particle size distribution graph**
- ✓ **Creating** and **reporting environmental impact areas**
- ✓ Ability to add different **machine** and **explosive parameters** automatically and manually,
- ✓ Ability to **import – export** blast designs in *.xml format
- ✓ Ability to give **diameter to blast holes** and making thematic arrangements.
- ✓ Reporting blast holes and volume information with all details with blast reporting options.

KEY BENEFITS

- ✓ Provides **practical** tools that allow users to make all designs easily.
- ✓ **3D visualization, surface, solid and block model** creation and access to all NETPROMine features
- ✓ Provides users to make designs freely by using **advanced CAD drawing, editing, and query tools**.
- ✓ Advanced tools for interior **ramp design**
- ✓ Provides an interactive design framework that greatly simplifies open pit designs
- ✓ Allow users to design **Open-pit roads** and make **excavation / fill calculations** with the road design tool.
- ✓ Provides unlimited **undo and redo** operations, even for the most complex designs
- ✓ Advanced **reporting** tools
- ✓ **Import/export** capabilities for data sharing with other software
- ✓ **Blasting pattern design** and calculation options
- ✓ Practical tools for all **surface operations**
- ✓ Realistic visualization with **texture draping** options
- ✓ Advanced **thematic** and **style** features



**Ankara Headquarter**

Bilkent Cyber Plaza, B Blok No:409 Cyberpark, 06800 Ankara/TÜRKİYE
T: +90312 265 0510

İstanbul Region Office

Nidakule Göztepe, Merdivenköy Mah. Bora Sok. No:1 Kat:134732, İstanbul/TÜRKİYE
T: +90216 417 6210

global@netcad.com
www.netcad.com

