



NETPROMine Underground Mining

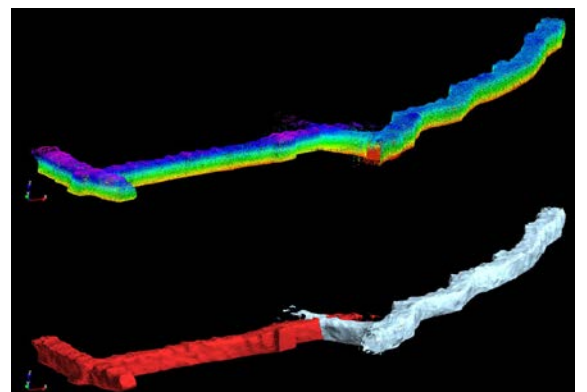
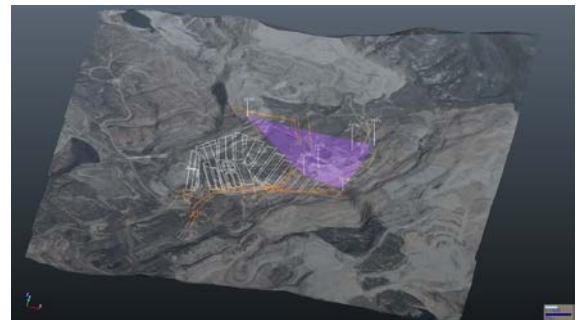
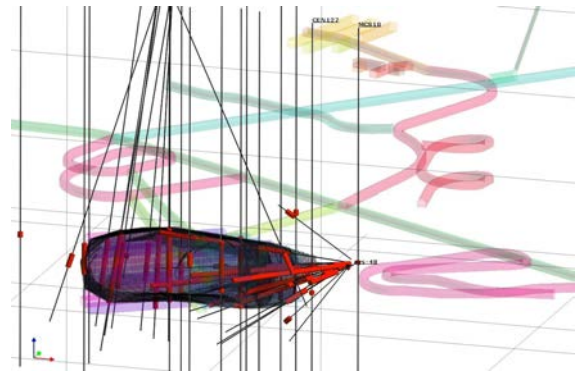
NETPROMine Underground Planning module offers practical solutions at all stages of underground mining to create the main gallery, curve, spiral, connection roads and support, installation and production plans. It allows ready-made profiles in its library and user-defined profiles to be automatically draped on the gallery axis. Users can thematize the galleries, add labels, define transparency and use alternative reporting tools by using all the parameters in the design.

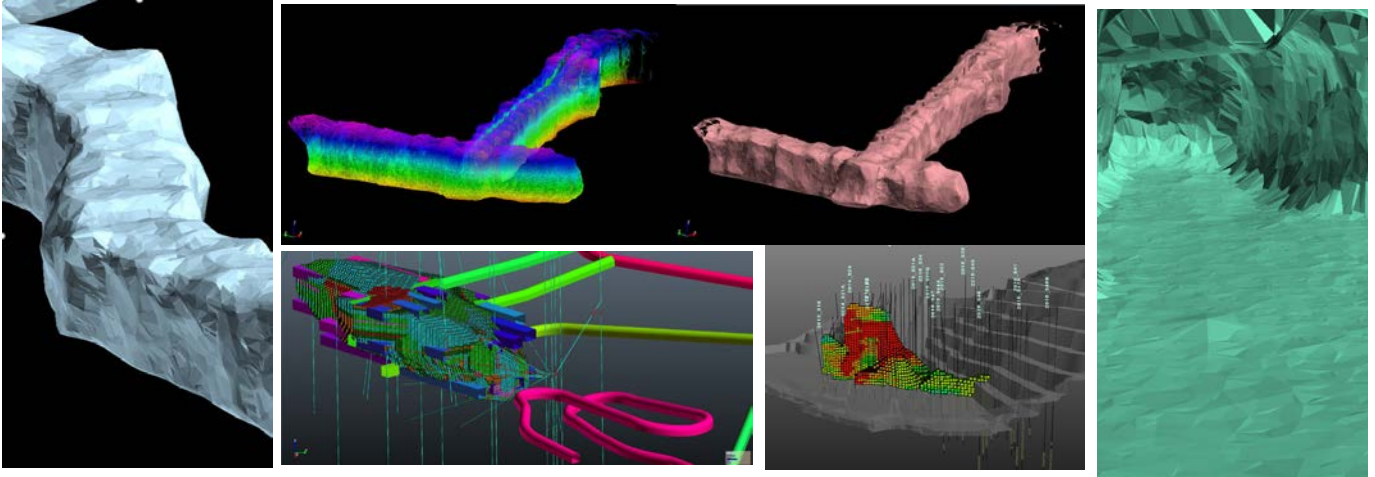
Prerequisites

NETPROMine Geological Modeling is mandatory for all NETPROMine modules.

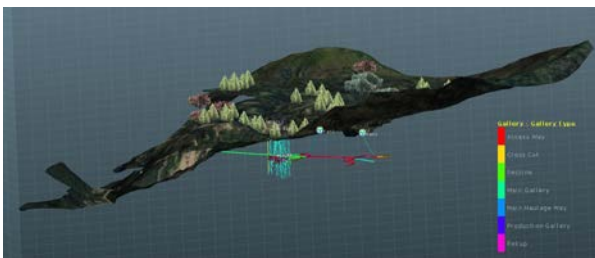
KEY FEATURES

- ✔ Advanced underground **gallery design** capabilities
- ✔ Ability to store all designs in a single **project database**
- ✔ Ability to view all **gallery designs and features in a list**
- ✔ Ability to make a **collective selection** on the gallery list and **editing gallery features**
- ✔ Unlimited **undo** and **redo** operations
- ✔ Gallery **filtering** and collective editing of filtered galleries
- ✔ **Profile draping** on **gallery axis lines** collectively
- ✔ Ability to automatically drape profiles on gallery axis lines in ***.dxf, *.dwg, *.str** formats produced by different software
- ✔ **Digitizing galleries** by using **gallery axis points**
- ✔ Ability to design galleries freely by using **angle, distance, slope, elevation and coordinate information**
- ✔ Ability to produce surface and **solid models** using **underground outcrop drawings**
- ✔ Ability to add a new user-defined profile to the **gallery profile library**
- ✔ User-defined **profile axis points**
- ✔ **Ready gallery profile** list
- ✔ Gallery **grouping**
- ✔ Ability to define the **gallery type**
- ✔ Underground **well design**
- ✔ Ability to add **curves** to galleries at a specified radius
- ✔ Automatically generating **connection paths** on galleries
- ✔ Ready to use forms where you can enter **support, ventilation, pressure and resistance values**
- ✔ Gallery **editing** and **query tools**
- ✔ Ability to add **air door** and **fan symbols** on galleries
- ✔ **Flexible reporting** tools that you can report galleries with all their details



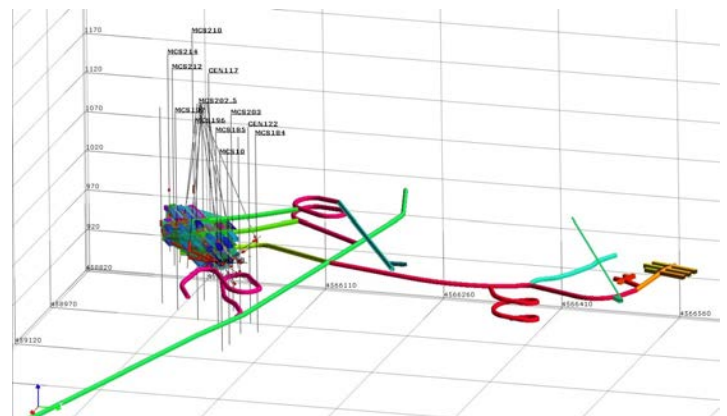


- ✔ Production reports can be obtained automatically by using selected **solid models and ore/waste amounts** within the gallery can be calculated.
- ✔ Advanced **block model filtering tools** for underground production planning.
- ✔ Ability to **filter the galleries** inside the solid model, transfer them to a new group
- ✔ Advanced **labeling tools**
- ✔ Ability to define **installation** and **transportation** types for galleries and making **thematize** operations
- ✔ Defining **transparency** to all gallery elements
- ✔ **Advanced CAD capabilities** for editing design lines
- ✔ Ability to produce **thematical** view by using features such as gallery **group and type**
- ✔ Ability to produce sections in different directions with **advanced section tools**, the dynamic transition between sections, **digitization and editing** capabilities over sections
- ✔ Advanced **road design** and **reporting tool** for **surface haul roads**
- ✔ Ability to visually interpret the gallery by using the **gallery exaggeration coefficient**
- ✔ Ability to export the surfaces and axis lines of the produced gallery profiles in ***.dxf, *.dwg** formats in order to share data with other software
- ✔ Ability to produce **solid model** with **implicit modeling** from **underground point cloud (*.las, *.laz) data**
- ✔ Ability to apply **elevation visualization** and simplifying options for **point cloud data**
- ✔ Ability to navigate within the gallery thanks to the **perspective view** feature
- ✔ Ability to produce printouts that includes coordinate and elevation information with **3D grid** feature



KEY BENEFITS

- ✔ Provides **practical tools** that allow users to make all designs easily.
- ✔ **3D visualization, surface, solid and block model** creation and access to all NETPROMine features
- ✔ Provides users to make designs freely by using advanced **CAD drawing, editing, and query tools**.
- ✔ Ready-to-use and customizable **profile library**
- ✔ Advanced tools for underground **gallery, shaft, curve and spiral design**
- ✔ Allow users to design Open-pit roads and make **excavation / fill calculations** with the road design tool.
- ✔ Provides unlimited **undo and redo** operations, even for the most complex designs
- ✔ Advanced **reporting tools**
- ✔ **Import/export** capabilities for data sharing with other software
- ✔ **Practical tools** for all surface operations
- ✔ Realistic visualization with **texture draping** options
- ✔ Advanced **thematic** and **style** features
- ✔ Controlled project management with practical **cross section tools**





Ankara Headquarter

Bilkent Cyber Plaza, B Blok No:409 Cyberpark, 06800 Ankara/TÜRKİYE
T: +90312 265 0510

İstanbul Region Office

Nidakule Göztepe, Merdivenköy Mah. Bora Sok. No:1 Kat:1 34732, İstanbul/TÜRKİYE
T: +90216 417 6210

global@netcad.com
www.netcad.com

