



Works Notification

October 2017

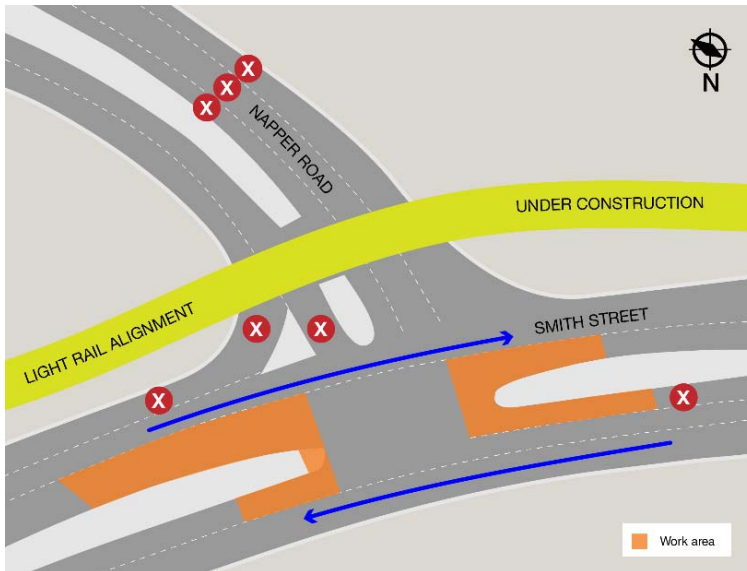
Gold Coast Light Rail Stage 2

TEMPORARY INTERSECTION CLOSURES - RAIL GRINDING NAPPER ROAD/SMITH STREET AND OLSEN AVENUE/WINTERGREEN DRIVE

As part of the testing and commissioning of Stage 2, rail grinding activities will require night time closures of the Napper Road/Smith Street and Olsen Avenue/Wintergreen Drive intersections, Parkwood.

Rail grinding involves the use of a specialised machine that removes irregularities from the track surface, as very small quantities of metal are removed from the rail noise is generated. This process will help ensure trams run smoothly when timetable testing and passenger services occur.

Napper Road and Smith Street intersection closure – 23 and 24 October 2017



- On Monday, 23 and Tuesday 24 October 2017, the intersection at Napper Road and Smith Street will be closed from 8.00pm to 5.00am to undertake rail grinding activities.
- This activity must be undertaken at night to minimise disruption on traffic.
- This scheduled work depends on wet weather and site conditions and may be subject to change.

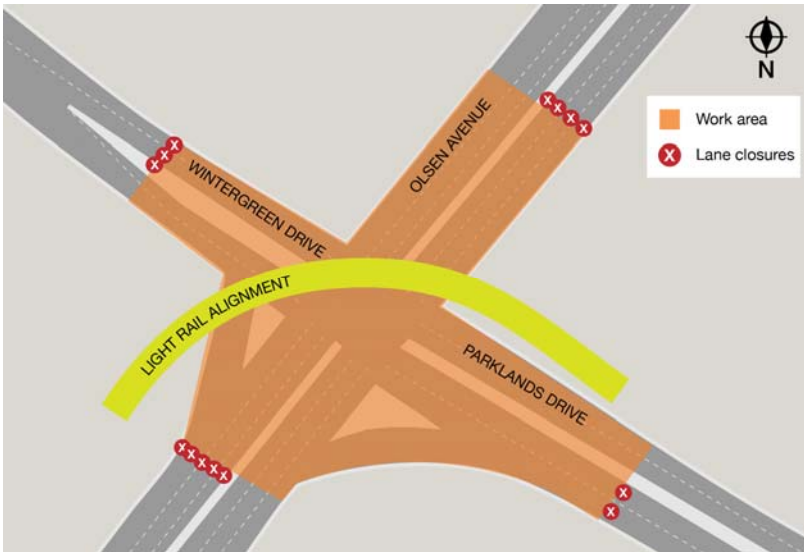
Detour map for Napper Road and Smith Street during intersection closure



About rail grinding.

- The process of rail grinding is a routine part of maintaining and commissioning rail systems and noise is generated during the process of removing the irregularities from the rail.
- Rail grinding uses a specialised machine to remove irregularities and improve contact between the tram wheels and rail resulting in a smoother ride and extending the life of the tracks.
- Rail grinding does produce a certain amount of noise and you may experience some noise while the activity occurs. We apologise for any inconvenience during this commissioning activity
- Remember: Tram testing is now underway and for safety please do not attempt to access the Stage 2 alignment. While stations may look complete the area remains a construction zone and trams will not carry passengers until operations commence.

Olsen Avenue and Wintergreen Drive intersection closure – 25 and 26 October 2017



- On Wednesday 25 October and Thursday 26 October 2017, the intersection at Olsen Avenue and Wintergreen and Parklands Drive will be closed from 8pm to 5.00am. An extra night of grinding may be necessary and will occur on Friday 27 October 2017
- Vehicle access to the Gold Coast University Hospital will be maintained via Hollows Way and the Smith Street Motorway/Parklands Drive intersection.
- Vehicle access to businesses along Olsen Avenue will be maintained.
- This activity must be undertaken at night to minimise disruption on traffic.

Detour map for access to hospital precinct and Parkwood during intersection closure



Every effort will be made to keep disruption to a minimum for residents and road users. We appreciate your patience during these important works and will continue to update you as work progresses.

Contact the project team



If you have any questions or would like to register for more information, please contact the CPB Contractors Project Team on **1800 425 799*** or email **gclrstage2@cpbcon.com.au**. Visit **www.gclrstage2.com.au** anytime for more information and updates.

* Free call within Australia. Call charges may apply from mobile or pay phones.



Australian Government

BUILDING OUR FUTURE

CITY OF
GOLDCOAST™

GoldlineQ
Gold Coast Light Rail



Queensland Government