

Gold Coast Light Rail

Week Commencing Monday 29 July 2013



Works this weekend

Gold Coast Highway (Ferry Avenue)

Night works will take place Sunday 28 July with a temporary closure of Surfers Paradise Boulevard between Ferry Avenue and Main Beach Parade. Southbound traffic will be maintained via the Esplanade and local access will be maintained to Marine Parade with some temporary delays.

Wharf Road

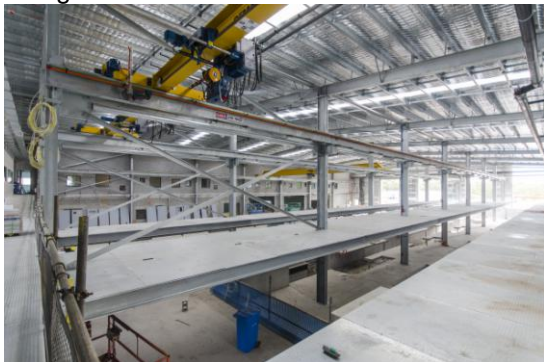
A Traction Power Substation will be delivered on Sunday 28 July 2013 from 9:00pm to 7:00am. Periodic lane closures of the intersection will occur. Local access via Old Burleigh Road will be maintained.

Parklands

Track work around Alumni Place and station construction at Engineering Drive continues.

Depot

Interior fit out of the Depot building continues. Track laying and work on the Council entrance and gatehouse also continues.



Inside the Depot building

Smith Street Bridge

There will be occasional lane closures and detours in place on the Smith Street Motorway between 7pm and 5am during work on the bridge overhead.

Southport

Queen Street

Between Wardoo and Nerang Streets

Finalising works including signal testing and overhead wire installation will occur.

Nerang Street

Between Queen and Davenport Streets

Nerang Street station construction, overhead wire installation and kerbing work continues.

Between Davenport and Scarborough Streets

Construction of Southport Station continues.

Scarborough Street

Between Nerang Street and Australia Fair

Drainage work continues and asphalt will be laid later in the week.

Between Australia Fair and Short Street

Track form work will continue in the centre of the road.

Between White and Queen Streets

Construction of Southport South station and track laying preparations continue.

Between Lawson Street and Park Lane

Energex works, pavement and kerb work continues and a new bus stop will be constructed outside the Westpac bank. Access to the Westpac drive through ATM may be restricted this weekend.

Short Street

Short Street will reopen to left in left out traffic only in early August.

Queen Street

Near the Croquet Club

Station construction and drainage work continues.

Barney Street

Track laying preparations continue.

Southport Broadwater Parklands

A temporary construction site is now established in the Broadwater Parklands to allow construction of the pedestrian and cycle bridge. Pedestrian

Keep up-to-date with the progress of Queensland's first light rail and to sign up for updates visit

goldline.com.au or call the project hotline on 1800 967 377*

*Free call within Australia. Call charges may apply from mobile phones and payphones.



Australian Government
Nation Building Program

CITY OF
GOLDCOAST



Queensland Government

and cycle access under and over the bridge will be maintained during construction.

Nerang River

Southport Broadwater Parklands

First piling for the shared cycle and pedestrian bridge has begun from the Broadwater Parklands site. The majority of ongoing construction work will occur from barges on the river.

Light Rail Vehicle bridge

Construction continues on bridge decks and headstocks for the light rail bridge with girder lifts and final piling works occurring.

Nerang River Barge movements

The barge Leonora will be in a central position in the river to continue girder lifts. There will be changes to the navigational channel and mariners are advised to obey speed limits, buoys and signs. Details are available on the [Maritime Safety Queensland website](#).

Paradise Waters

Admiralty Drive

Installation of street lighting and kerbing continues. Traffic access into and out of Paradise Waters will be maintained at all times.

Macintosh Island South Bridge

Steel installation and concreting for headstock construction continues. Access for vessels under the bridge will be maintained however short delays may occur.

Surfers Paradise

Gold Coast Highway Traffic Diversions

The Gold Coast Highway is closed to all southbound traffic from the intersection of [Ferry Avenue to Ocean Avenue](#) with traffic diverted to Surfers Paradise Boulevard.

Ferry Avenue to Main Beach Parade

Piling, underground services and track form preparation continue on Surfers Paradise

Boulevard. Underground services work continues at the Gold Coast Highway. Night and weekend works will be required throughout this area.

Ocean Avenue to View Avenue

Underground service and track form preparation continues. The [intersection of Staghorn Avenue and Surfers Paradise Boulevard](#) will remain closed to all east-west traffic. Some night works will be required.

Underground service works and preparation for track form construction will continue near Cypress Avenue with some night works required.

Elkhorn Avenue to Cavill Avenue

Surfers Paradise Boulevard is now open to southbound traffic. Footpath, landscaping and station works will continue.

Surfers Paradise Boulevard Closures

Surfers Paradise Boulevard between [Beach Road and Clifford Street](#) is now closed. Alternative routes and redirections will be signed. Please drive to the conditions.

Cavill Avenue to Beach Road

Night works to install underground services will continue this week from 6:30pm to 6:30am, Monday to Friday.

Beach Road to Trickett Street

Hanlan Street is now closed to all east and westbound traffic. For access to Hanlan Street, including Centro Shopping Centre, please use the Esplanade. Access to The Islander will be maintained.

Trickett Street to Clifford Street

Night works to prepare for track installation will take place from 6:30pm to 6:30am Monday to Friday.

Clifford Street to Thornton Street

Southbound lanes between Clifford and Thornton Street have reopened. Works to finalise underground services, traffic signals, complete footpath, landscaping and station works continue.



Installation and upgrade of underground services will begin at the intersection of Clifford Street on Monday 29 July 2013. Points of access and, temporary lane will occur.

Broadbeach

Gold Coast Highway

Finishing works continue along the Gold Coast Highway from Aubrey Street to Second Avenue with periodic lane closures at off peak times.

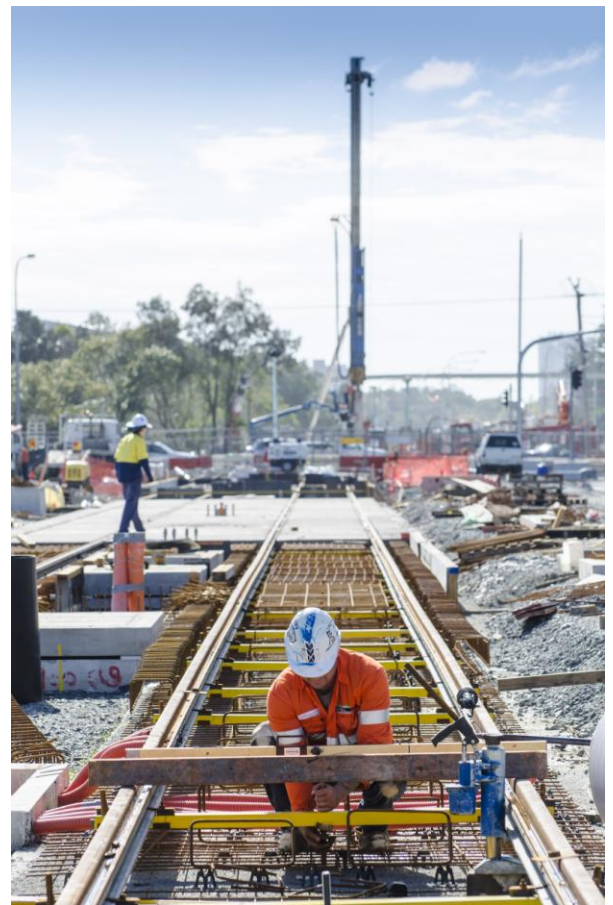
T E Peters Drive works

Works continue at the intersection of [T E Peters Drive and the Gold Coast Highway](#). The intersection is partially closed with left in/left out access only. These works will be continuous 24/7 and the intersection is expected to re-open to traffic by 6:00am Friday 2 August 2013.

Westbound traffic access is available via Elizabeth Avenue, Hooker Boulevard and Australia Avenue.

Eastbound traffic access is available via Elizabeth Avenue or Australia Avenue.

There are changes to the 745 and 750 bus services during the eight day partial closure (see below map).



Track laying in Broadbeach

Elizabeth Avenue

The intersection is now fully signalled with the right turn movement fully reinstated.

Underground services and track form preparation works continue.

Margaret Avenue

Night works to upgrade and install underground services continue along the Gold Coast Highway from Margaret Avenue towards the Beach Hotel. Periodic slow lane closures of the Gold Coast Highway will occur.

Timing of these works is subject to weather conditions and construction constraints.



Keep up-to-date with the progress of Queensland's first light rail and to sign up for updates visit goldlink.com.au or call the project hotline on 1800 967 377*

*Free call within Australia. Call charges may apply from mobile phones and payphones.



Australian Government
Nation Building Program

CITY OF
GOLD COAST

 **TRANSLink**



Queensland Government