

## Gold Coast Light Rail

Week Commencing Monday 9 September 2013



### Get Ready, Get Set, Go! Testing.

A rigorous testing program for the Gold Coast light rail is now underway. For more information on this exciting phase check out the [Testing For Your Safety](#) brochure or visit [goldline.com.au/testing](http://goldline.com.au/testing).

### Powering up overhead wires in Southport.

From [Saturday 07 September 2013](#) overhead wires will be powered up from the Depot near Wardoo Street to Southport Station near the intersection of Scarborough Street and Nerang Street.

Look up and see the danger! Energised wires carry 750 volts of live electricity and should be treated with caution at all times.

Overhead wires from Wardoo Street to Scarborough Street will be live and should be treated with caution. As long as you treat the overhead wires and poles as you would standard electricity poles and wires you will always be safe.



Overhead wires in Southport will be live

### Parklands

There will be partial lane closures day and night from Tuesday 10 September to Friday 13 September for asphaltting of Parklands Drive near Hospital Road East. Access will be maintained and traffic control will guide motorists.

### Depot

Maintenance building fit out is now complete and the tram paint booth installation and car park line marking is occurring.

### Smith Street Bridge

The bridge is nearing completion with track now laid.

### Southport

#### Baratta Street

Landscaping and rehabilitation work continue at the bio-retention basin behind the Depot. This will involve truck movements in Baratta Street for several weeks.

#### Queen Street and Nerang Street

Between Wardoo and Nerang Streets

#### Nerang Street

Between Queen and Davenport Streets

The pedestrian crossing near the hospital will be return to its original location early in the week.

Kerbing works and construction of Nerang Street and Southport Stations continues.

#### Scarborough Street

Between Nerang Street and Australia Fair

There will be night time lane closures to pour concrete for track form construction.

#### Between Australia Fair and Short Street

The pedestrian crossing at Australia Fair will move 40 metres south on Monday for three weeks to allow track for construction. It will then return to the original position. Kerb and track finishing works will also continue.

#### Between Lawson Street and Park Lane

Kerb and footpath works will continue.

#### Between Nerang Street and Queen Street

There will be night works and lane closures to pour concrete for track form construction.

#### Queen Street

Near the Croquet Club

Keep up-to-date with the progress of Queensland's first contemporary light rail at [www.goldline.com.au](http://www.goldline.com.au) or call the project on 1800 967 377\*.

\*Free call within Australia. Call charges may apply from mobile phones and payphones.

Drainage work and construction of the Broadwater Parklands Station continues.

### Barney Street

Track preparation and electrical services installation continues.

## Nerang River

---

### Shared cycle and pedestrian bridge

Piling work on the southern side of the bridge continues.

### Light rail bridge

All girder lifts are now complete and concreting of bridge decks is nearly completed.

### Nerang River Barge movements

The barge Leonora will be on the eastern side of the existing traffic bridge adjacent to the Proud Park boat ramp for piling works. Mariners are advised to watch for anchor cables, obey speed limits, buoys and signs. Details are available on the [Maritime Safety Queensland website](#).

## Paradise Waters

---

### Macintosh Island South Bridge

Girders have been installed and concrete will be poured for bridge decks. Retaining wall construction is also occurring.

### Admiralty Drive

Minor night works will take place next week to install and supply power to street lighting.

## Surfers Paradise

---

### Ferny Avenue to Main Beach Parade

Surfers Paradise Boulevard is closed for construction between Ferny Avenue and Main Beach Parade. Local access is maintained to properties from Main Beach Parade to Ocean Avenue. Major construction of track form, underground services and station works continues.

Night works to install underground services on Ferny Avenue will take place this week on Monday 9 September. Construction will be undertaken in stages to maintain access at all

times. Traffic management will be in place to assist residents.

Nightworks will also take place on Surfers Paradise Boulevard, adjacent to Higman Street, on Wednesday 11 September.

### Gold Coast Highway Traffic Changes

A southbound traffic lane has been reopened along Ferny Avenue (Gold Coast Highway). Surfers Paradise Boulevard is now closed from Ferny Avenue to Main Beach Parade with local access only via Main Beach Parade.

### Gold Coast Highway Night Works

Major construction, including night works, in the area will continue in the lead up to the Gold Coast 600. Night works will take place from Monday to Friday from 6:30pm to 6:30am.

### Ocean Avenue to View Avenue

Underground service and track form preparation continues.

Underground service works will take place at the intersection of View Avenue and Surfers Paradise Boulevard from 6:30pm on Monday 9 September for one week. Access will be maintained at all times.

### Elkhorn Avenue to Cavill Avenue

Footpath, drainage, landscaping and station works will continue.

Underground services works are underway along Surfers Paradise Boulevard adjacent to Surfers Arcade and Chevron Renaissance. Construction will occur from 6:30am to 6:30pm and take up to two weeks to complete

Night works to finalise the construction of underground services will take place from Monday 9 September in the footpath adjacent to Surf Dive n Ski, Lorna Jane and Ugg King.

During these works temporary footpath closures may occur and traffic management will be in

place to assist vehicles and pedestrians. These works will take place outside of business hours.

### Surfers Paradise Boulevard Closures

Surfers Paradise Boulevard between [Beach Road and Clifford Street](#) is now closed. Alternative routes and redirections will be signed.

### Cavill Avenue to Beach Road

Night works to install underground services will continue this week from 6:30pm to 6:30am, Monday to Friday. Points of access may change and temporary lane changes will occur.

### Beach Road to Clifford Street

Hanlan Street is now closed to all east and westbound traffic. For access to Hanlan Street, including Centro Shopping Centre, please use the Esplanade. Access into Beach Road will be maintained.

Night works to install underground services will continue this week from 6:30pm to 6:30am, Monday to Friday.

### Clifford Street Intersection

Track preparation works will commence on the northern side of the intersection. All traffic movements through the intersection will be maintained. Works to finalise underground service installations at the intersection will continue.

### Clifford Street to Thornton Street

Southbound lanes between Clifford and Thornton Street have reopened. Works to finalise underground services, traffic signals, footpaths, landscaping and station works continues.

Enderley Avenue will be reopened to east-west traffic from Monday 9 September.

From Monday 9 September, Markwell Avenue east will be closed to traffic at Surfers Paradise Boulevard to facilitate finishing works including the asphaltting, footpaths, kerbing and landscaping.

Night works will also take place in this area, including temporary road closures between intersections. Local access will be maintained and alternative routes will be signed.

## Broadbeach

### Gold Coast Highway

Finishing works continue along the Gold Coast Highway from Aubrey Street to Second Avenue with periodic lane closures at off peak times.

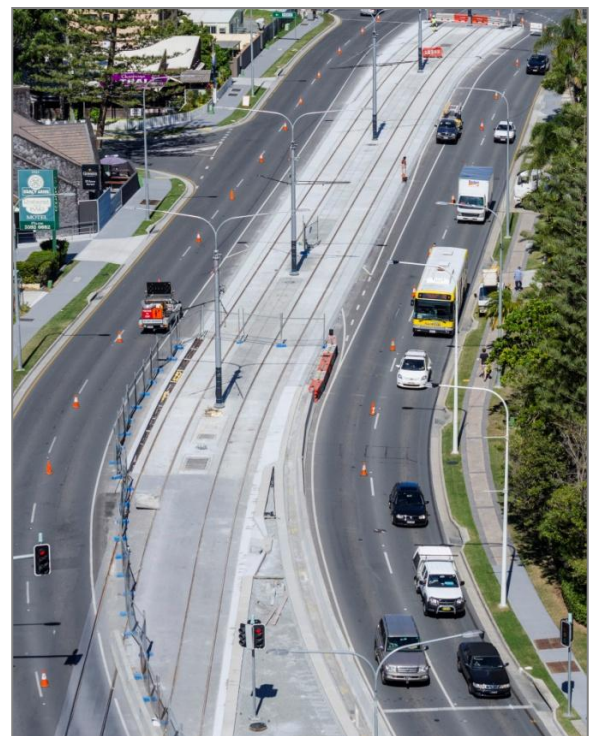
Traffic signal works will continue along the highway with periodic lane closures to occur.

### Queensland Avenue to Elizabeth Avenue

Rail delivery, track laying and concrete pours will continue within the centre median. Periodic lane closures will occur.

### Main Place

Storm water drainage works will begin at Main Place.



Tracks in southern Surfers Paradise

Timing of these works is subject to weather conditions and construction constraints.