

Weekly Construction Update #85

Week commencing 25 November 2013

Passenger services are on schedule to commence in June 2014 as planned!

Christmas shutdown in Southport and Surfers Paradise

In response to community requests a construction shutdown will occur in the following areas during the Christmas period.

Surfers Paradise Boulevard: between Elkhorn Avenue and Hamilton Avenue from 30 November to 1 February 2014.

Southport: Nerang Street (from Davenport Street) and Scarborough Street (from Lawson Street) from 23 November to 14 January 2014.

Scarborough Street: between Lawson Street and Queen Street from 30 November 2013 to 14 January 2014.

During this time construction fencing will be removed and heavy machinery will cease work. Some construction activities will continue within station and track areas including overhead wire and pole installation and station fit outs. Tram and electrical equipment testing will also continue.

To accommodate this shutdown footpath and landscaping works will continue following the Christmas shutdown. Works will also occur outside of these areas throughout December and January.

Work commencing 25 November 2013

Parklands

Landscaping and tram testing continues.

Southport

Queen Street

Near Wardoo Street

Night works will occur throughout the week as part of tram testing.

Nerang Street

Between Queen and High Streets

Track finishing work continues.

Between Davenport and Scarborough Street

Civil construction will cease however landscaping, electrical work and station construction will continue until early December.

Scarborough Street

Scarborough Street southbound night closures

Scarborough Street southbound from Short Street to Queen Street will be closed between 7:00pm and 5:00am from Monday to Friday for drainage and road construction. **Access will still be available for Little Theatre performances.**

East and westbound traffic on Short and Lawson Streets will be maintained at the Scarborough Street intersection.

Between Nerang Street and Queen Street

Civil construction will cease until mid January and fences will be removed. The northbound lane remains closed to traffic until the end of November. Electrical and landscaping work will continue. Works within the track corridor including electrical services and landscaping will continue. Traffic will remain one way southbound from Nerang Street to Queen until Saturday 30 November 2013.

Between White Street and Queen Street

Day and night works for kerb installation, drainage and footpath works will continue until 29 Friday November 2013.

Overhead wires are live and trams are testing in Southport

Overhead power lines in Scarborough Street are powering up from Sunday 24 November 2013 and tram movements will commence once the electrical equipment is tested.

Trams are currently testing at operational speeds and overhead wires are live from the [Southport Station near Scarborough Street to the Gold Coast University Hospital Station at Parklands Drive](#).

Never park or queue on the tracks and remember U-Turns are only legal where there is a sign permitting.



Weekly Construction Update #85

Week commencing 25 November 2013

Queen Street

Near the Croquet Club and Barney Street

Station and track form construction continues. Night works may occur throughout the week.

Nerang River

Shared cycle and pedestrian bridge

Piling works continue on the northern side with changes to the pedestrian access on the boardwalk.

Light rail bridge

Track laying across the bridge continues.

Nerang River Barge movements

The barge Leonora is on the northern side of the river to the east of the traffic bridge. Mariners are advised to use caution. Details are available on the [Maritime Safety Queensland website](#).

Paradise Waters

Gold Coast Highway

Station works continue at Tedder Avenue. Night works will take place at Macintosh Island South to complete bridge works. Lane closures will occur.

A combination of day and night works will occur to complete drainage, landscaping and civil works along the highway from McIntosh Island Bridge north to Admiralty Drive. Works will include Sunday 24 November 2013 from 10:00am to 6:00pm. Periodic lane closures will occur.

Surfers Paradise

Overhead Line Installation in Surfers Paradise

From Monday 25 November 2013, overhead line installation will commence along Surfers Paradise Boulevard from Elkhorn Avenue to Hamilton Avenue.

To facilitate overhead line works, temporary fencing will be erected along the boulevard for the safety of workers and the public.

Ferny Avenue Intersection

Night works will take place next week for water main works. Minimal impacts are associated with these works. Outside lane closures on the Gold Coast Highway will occur.

Ocean Avenue to Elkhorn Avenue

Ocean Avenue is one-way westbound from Surfers Paradise Boulevard to the Gold Coast Highway. Asphalt, kerbing, overhead line installation, underground service and station works continue throughout the area.

Elkhorn Avenue to Cavill Avenue

Footpath, kerbing, overhead line and underground services works will take place at various locations along Surfers Paradise Boulevard and at Elkhorn and Cavill Avenue intersections.

Night and weekend works will also take place at various locations throughout the week from 6:30pm to 6:30am, Sunday to Friday.

Works continue in the station area.

Cavill Avenue to Clifford Street

Footpath, kerbing, asphalt, overhead line, underground services and finishing works are ongoing.

Night works will also take place at various locations throughout the week from 6:30pm to 6:30am, Sunday to Friday.

On Monday 25 November 2013, Alison Street will be closed to all through traffic at Surfers Paradise Boulevard for up to 24 hours. Local access will be maintained under traffic control from Clifford Street.

Hanlan Street Closure

From Friday 22 November 2013, the intersection of Hanlan Street, Beach Road and Surfers Paradise Boulevard will be reduced to one-lane under the direction of traffic control to facilitate finishing works including asphalt, kerbing and guttering. Construction will be undertaken in stages to maintain access at all times under traffic control for up to five days. Night works will take place.

Clifford Street to Thornton Street

Finishing works for underground services, footpaths, landscaping and station works continue.

Broadbeach

Gold Coast Highway



Weekly Construction Update #85

Week commencing 25 November 2013

Florida Gardens Station

Transformer works will take place on 23, 25 and 26 November 2013.

Outside lane closures of the Gold Coast Highway and Genoa Street will occur between 6:30am and 6:30pm.

Second Avenue to Australia Avenue

Landscaping works in the centre median of the highway will continue this week. Inside lane closures between 7:00am and 3:00pm will occur Monday to Friday.

Australia Avenue to Pacific Fair Drive

Final asphaltting works continue from Australia Avenue to Margaret Avenue between 6:30pm and 6:30am and are expected to take up to one week to complete, weather permitting.

Motorists travelling southbound along the Gold Coast Highway will be diverted via contra flow onto the northern lanes of the Gold Coast Highway.

Australia Avenue to Victoria Avenue

Energex works along the Gold Coast Highway will continue this week. The works will be a combination of day and night works and will involve the removal of power poles and cable works. Lane closures of the Gold Coast Highway will occur at off peak times.

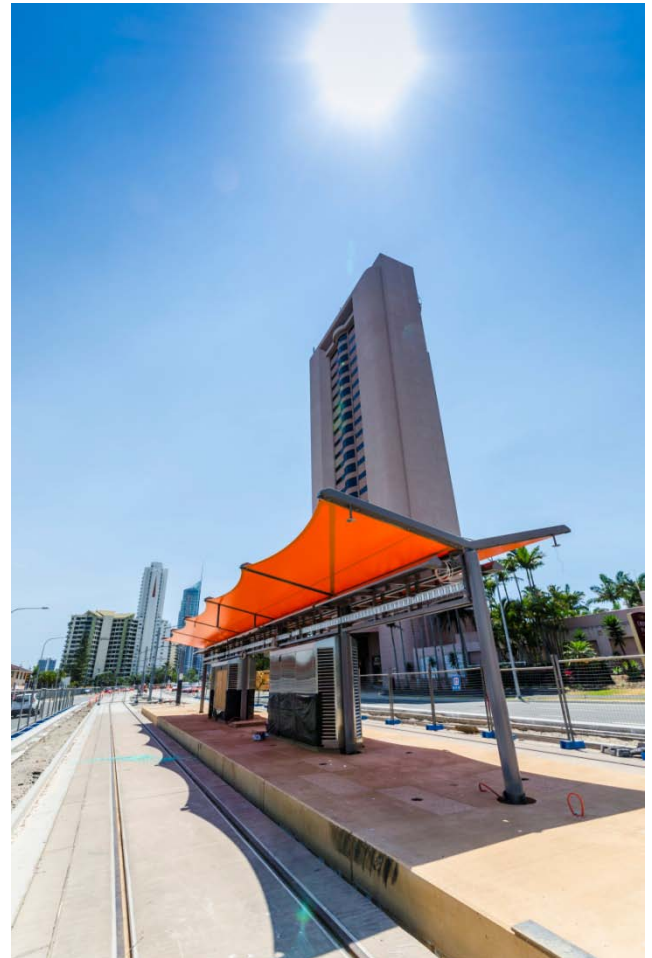
Kerbing, footpath and landscaping works across various locations along the highway will occur. Some lane closures will be required for island works.

Margaret Avenue

Energex, traffic signal and footpath works will continue at the intersection heading north towards the Beach Hotel. Lane closures and pedestrian detours will occur.

Hooker Boulevard intersection

Traffic signal and underground service works continue. Lane closures will occur during off peak times.



Timing of works is subject to weather conditions and construction constraints.

To un-subscribe email STOP to goldcoastlightrail@macdow.com.au