



Art.-Nr. P422 / P423

- Werkzeuglose Rohreinführung M20 / M25
- Kein Abschneiden der Rohre mehr nötig
keine Nacharbeit
- Absolut betondicht - sichere Zugentlastung
- Kompakte Bauform
- Hohe Flexibilität Ø 170 mm



Technische Daten

Sonstige Eigenschaften

DIN	0606-1, DIN 49073
Material	Kunststoff (Polypropylen)
Halogenfrei	ja
Montage mit Flügel möglich	ja
Montage ohne Flügel möglich	ja
EAN P422	4260182060988
EAN P423	4260182060995
Zolltarifnummer	39259080

Abmessungen & Verpackungen

Höhe Einbaugehäuse	125 mm
Durchmesser Einbaugehäuse	170 mm
Länge Trafotunnel	230 mm
Höhe Trafotunnel	55 mm
Mineralfaserplatte	15 mm
Verpackungseinheit	12 Stück

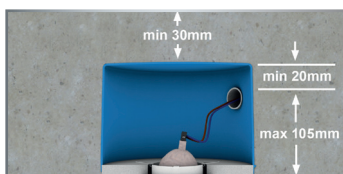
Anwendungshinweis

- Um eine glatte Oberfläche herzustellen muss die Mineralfaserplatte gespachtelt werden.

Installation für NV/HV/LED-Leuchten

Leuchtauswahl

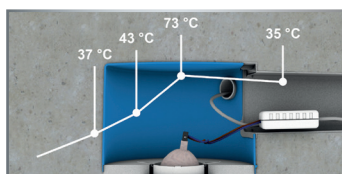
Halogen Niedervolt (12 V)



Einbautiefe max. 105 mm.

Temperatur-Profil

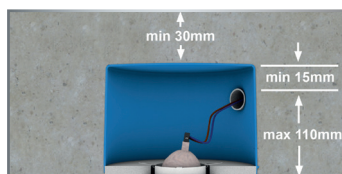
Raumtemperatur 23°



50 W QR-CBX 51
(Cool-Beam mit Schutzscheibe)

Leuchtauswahl

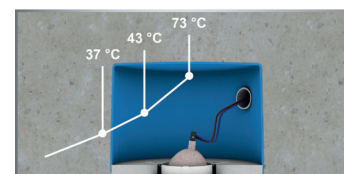
Halogen Hochvolt (230 V)



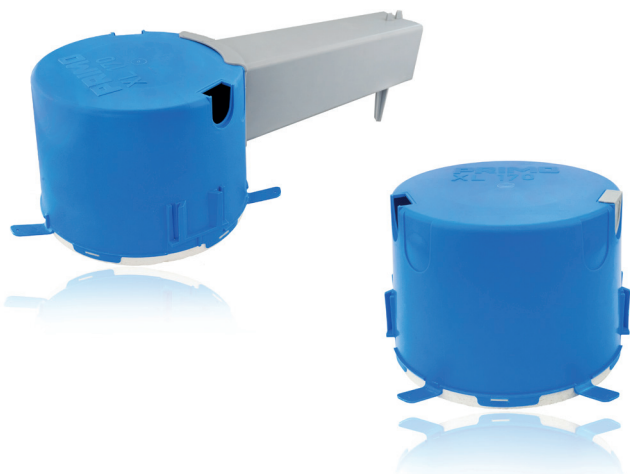
Einbautiefe max. 110 mm.

Temperatur-Profil

Raumtemperatur 23°



50 W-Lampe mit Sockel
GZ10/GU10.



Order-no. P422 / P423

- Toolless insertion for pipe sizes M20 / M25
- No more cutting of the pipes necessary
- Safe strain relief caused by the quick fix technology
- High flexibility - Ø 170 mm mineral fibreboard



Technical data

Other characteristics

DIN	EN 0606-1, EN 49073
Material	plastic (polypropylene)
Halogen free	yes
Mounting with wings possible	yes
Installation without wings possible	yes
EAN P422	4260182060988
EAN P423	4260182060995
Customer tariff number	39259080

Dimensions & packaging

Height of the installation housing box	125 mm
Diameter of the installation housing box	170 mm
Length of transformer tunnel	230 mm
Height of transformer tunnel	55 mm
Mineral fibreboard	15 mm
Packing unit	12 pieces

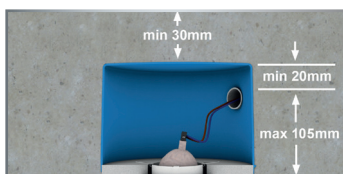
Application Note

- To produce a smooth surface, the mineral fibreboard must be filled.

Installation for low voltage / high voltage / LED lights

Luminaire selection

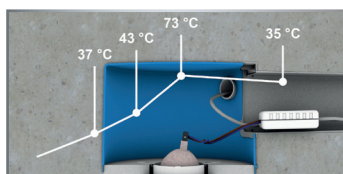
Halogen low voltage (12V)



Installation depth
max. 105 mm.

Temperature profile

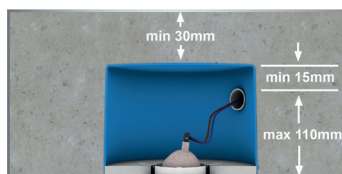
Room temperature 23°



50W QR-CBC 51 (Cool-Beam
with protective screen)

Luminaire selection

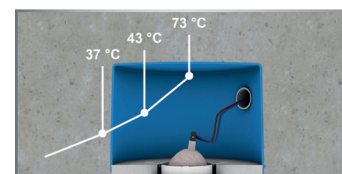
Halogen high voltage (230 V)



Installation depth
max. 110 mm.

Temperature profile

Room temperature 23°



50 W lamp with socket
GZ10 / GU10.