

**TOSPEARL* 120 FL, 130 FL,
 145 FL and 1100 FL**
 Silicone Beads for BOPP film
 applications



MARKETING BULLETIN

SILANES

TOSPEARL 120 FL, 130 FL, 145 FL and 1100 FL silicone beads are spherical methyl silsesquioxane beads with narrow particle size distributions and mean particle diameters of approximately 2, 3, 4.5 and 10 microns, respectively. Their uniform particle sizes, thermal stabilities and low surface energies make them excellent candidates to consider for use as additives to BOPP films in which slip and anti-block properties are required.

Key Features and Typical Benefits

- Spherical geometry and narrow particle size distributions helps provide slip and antiblocking for polyolefin films such as BOPP
- Able to be compounded with thermoplastics using typical polymer processing equipment, e.g. extruders, due to high heat resistance
- Stable and low coefficient of friction (CoF) surfaces typically are obtained after film extrusion Tospearl FL beads do not migrate
- Generally no change in the printability of films is expected

Typical Physical Properties

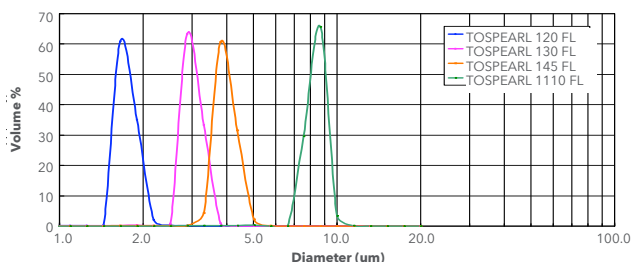
Property	TOSPEARL 120 FL beads	TOSPEARL 130 FL beads	TOSPEARL 145 FL beads	TOSPEARL 1100 FL beads
Appearance	White spherical beads	White spherical beads	White spherical beads	White spherical beads
Mean Particle Diameter ⁽¹⁾ (µm)	1.8 - 2.3	2.3 - 3.1	4.0 - 5.0	8.5 - 10.5
Weight Loss @ 250 °C and 0.5 hours, %	< 1.0	< 1.0	< 1.0	< 1.0
pH ⁽²⁾	6.0 - 8.0	6.0 - 8.0	6.0 - 8.0	6.0 - 8.0
Bulk Specific Gravity	0.35	0.36	0.43	0.66
Particle Specific Gravity	1.32	1.32	1.32	1.32
Refractive Index	1.42	1.42	1.42	1.42

(1) Measured on a Coulter Counter Multisizer II (Electrical Sensing Zone method)

(2) A 2% dispersion in methanol/water (1/1)

Typical properties are average data and are not to be used as or to develop specifications.

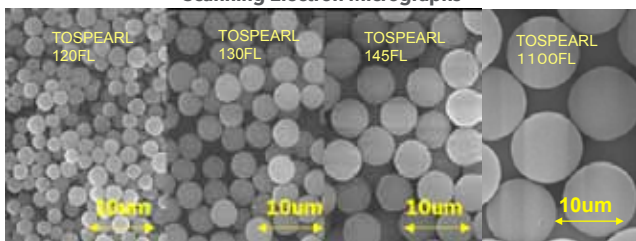
Particle Size Distribution of TOSPEARL FL Beads



Instrument: Coulter Counter Multisizer II (Electrical Sensing Zone method)
 Dispersion medium: aqueous surfactant solution
 Dispersing condition: Ultrasonic dispersion

TOSPEARL 120 FL, 130 FL, 145 FL and 1100 FL beads have a very sharp particle size distribution.

Scanning Electron Micrographs

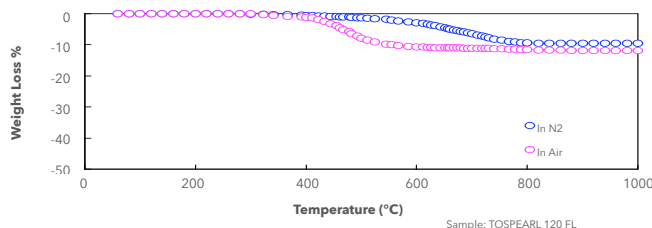


SEM illustrates the uniform size distribution of the spherical 2, 3, 4.5 and 10-micron beads.

Note: Test results. Actual results may vary.

Thermal Stability

Thermogravimetric analysis data of TOSPEARL 120 FL silicone resin beads is shown below. The scan rate was 10 °C per minute. TOSPEARL 120 FL silicone resin beads showed thermal decomposition at temperature in excess of 420 °C. Weight loss was minimized to 12-13% even if heated to 900 °C. TOSPEARL 130 FL, 145 FL and 1100 FL silicone resin beads show the same behavior of thermal properties.



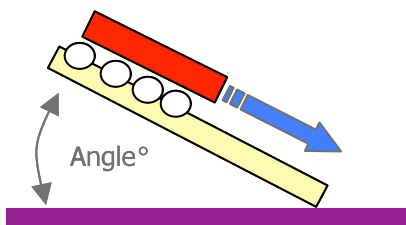
Test data. Actual results may vary.

Potential Applications

Antiblocking and slip agent for BOPP films

TOSPEARL 120 FL, 130 FL, 1100 FL and 145 FL's beads low surface energies, uniform sizes and spherical shapes are key properties that help impart lubricity properties to films.

The slip properties are illustrated using a simple test.



Angle is recorded when block starts sliding.

A comparison with a blank and a silica - containing surface shows significantly better lubricity of the surface containing the TOSPEARL FL grades:

	Slide Angle (°)
TOSPEARL 120 FL bead	5°
Silica	17°
Blank	19°

Note: Test data. Actual results may vary.

**Comparison of Properties of BOPP Film⁽¹⁾
Using TOSPEARL 120 FL beads or Silica**

	Silica (2 μm)	TOSPEARL beads 120 FL (2 μm)
Dosage Level (%)	0.15	0.15
Coefficient of Friction ⁽²⁾ @ 23°C	0.30	0.20
Coefficient of Friction ⁽²⁾ @ 80°C	1.80	0.60
Coefficient of Friction ⁽³⁾ @ 80°C	1.40	0.50

1) The ideal thickness of skin layer containing TOSPEARL 120 FL beads is 40% of the diameter of the particle in order to assure good retention
 2) ASTM D-1894 (film on film)
 3) ASTM D-1894 (film on metal)
 Test data. Actual results may vary.

Low coefficient of friction surfaces can be obtained with dosage levels of TOSPEARL 120 FL beads as low as 0.05%.

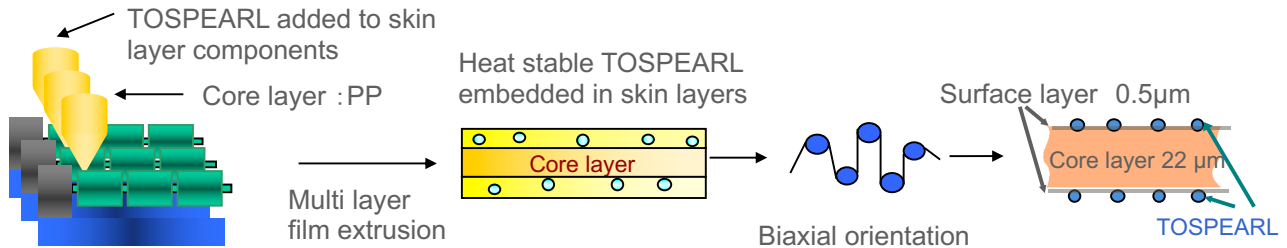
Good hot-slip properties can facilitate easy processing and faster line speeds for packaging, such as cigarette production, and converting equipment because TOSPEARL FL grades help prevent film from tearing.

The antiblocking properties of TOSPEARL FL beads help prevent adhesion during film production, either on a finished roll, or on the inside of the bubble.

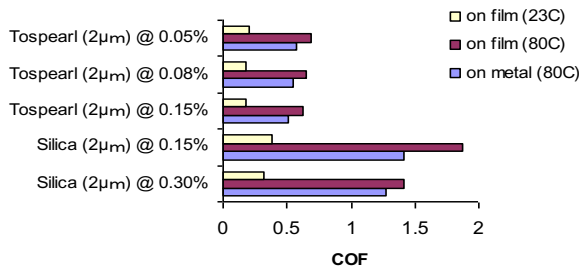
In addition, the small differences between the refractive indices of TOSPEARL FL beads and the polyolefin resin can help yield films of high transparency and clarity with high gloss.

BOPP Film Process

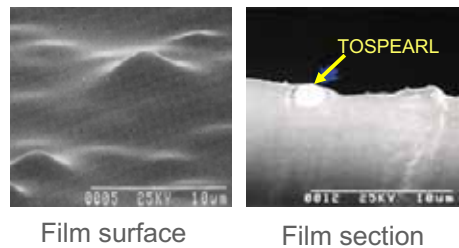
Food packaging film application



Slip performance COF (ASTM-D1894)



Film with protrusion



- TOSPEARL based formulation provides the solution to low COF.
- TOSPEARL enhances anti-blocking properties in BOPP films.
- Can use typical polymer processing equipment because of high heat resistance (350 C)
- FDA approved TOSPEARL as antiblocking agent for use in food contact packaging

Patent Status

Nothing contained herein shall be construed to imply the nonexistence of any relevant patents or to constitute the permission, inducement or recommendation to practice any invention covered by any patent, without authority from the owner of the patent.

Product Safety, Handling and Storage

Customers should review the latest Safety Data Sheet (SDS) and label for product safety information, safe handling instructions, personal protective equipment if necessary, emergency service contact information, and any special storage conditions required for safety. Momentive Performance Materials (MPM) maintains an around-the-clock emergency service for its products. SDS are available at www.momentive.com or, upon request, from any MPM representative. For product storage and handling procedures to maintain the product quality within our stated specifications, please review Certificates of Analysis, which are available in the Order Center. Use of other materials in conjunction with MPM products (for example, primers) may require additional precautions. Please review and follow the safety information provided by the manufacturer of such other materials.

Limitations

Customers must evaluate Momentive Performance Materials products and make their own determination as to fitness of use in their particular applications.

Customer Service Centers

Worldwide

Email: commercial.services@momentive.com

Telephone

Americas

+1 800 295 2392
+1 614 986 2495

Latin America

+55 11 4534 9660

Europe, Middle East, Africa and India

00800 4321 1000
+40 213 044229

Asia Pacific

China
800 820 0202

Japan
+81 276 20 6182

All Other Countries
+60 3 9206 1543

Disclaimer

DISCLAIMER: THE MATERIALS, PRODUCTS AND SERVICES OF Momentive Performance Materials Inc. and its subsidiaries and affiliates DOING BUSINESS IN LOCAL JURISDICTIONS (collectively "SUPPLIERS") ARE SOLD BY THE RESPECTIVE LEGAL ENTITY OF THE SUPPLIER SUBJECT TO SUPPLIERS' STANDARD CONDITIONS OF SALE, WHICH ARE INCLUDED IN THE APPLICABLE DISTRIBUTOR OR OTHER SALES AGREEMENT, PRINTED ON THE BACK OF ORDER ACKNOWLEDGMENTS AND INVOICES, AND AVAILABLE UPON REQUEST. ALTHOUGH ANY INFORMATION, RECOMMENDATIONS, OR ADVICE CONTAINED HEREIN IS GIVEN IN GOOD FAITH, SUPPLIERS MAKE NO WARRANTY OR GUARANTEE, EXPRESS OR IMPLIED, (i) THAT THE RESULTS DESCRIBED HEREIN WILL BE OBTAINED UNDER END-USE CONDITIONS, OR (ii) AS TO THE EFFECTIVENESS OR SAFETY OF ANY DESIGN INCORPORATING SUPPLIERS' PRODUCTS, MATERIALS, SERVICES, RECOMMENDATIONS OR ADVICE. AFOREMENTIONED EXCLUSIONS OR LIMITATION OF LIABILITY ARE NOT APPLICABLE TO THE EXTENT THAT THE END-USE CONDITIONS AND/OR INCORPORATION CONDITIONS CORRESPOND TO THE RECOMMENDED CONDITIONS OF USE AND/OR OF INCORPORATION AS DESCRIBED BY SUPPLIER IN ITS PRODUCT DATA SHEET AND/OR PRODUCT SPECIFICATIONS. EXCEPT AS PROVIDED IN SUPPLIERS' STANDARD CONDITIONS OF SALE, SUPPLIERS AND THEIR REPRESENTATIVES SHALL IN NO EVENT BE RESPONSIBLE FOR ANY LOSS RESULTING FROM ANY USE OF ITS MATERIALS, PRODUCTS OR SERVICES DESCRIBED HEREIN. Each user bears full responsibility for making its own determination as to the suitability of Suppliers' materials, services, recommendations, or advice for its own particular use. Each user must identify and perform all tests and analyses necessary to assure that its finished parts incorporating Suppliers' products, materials, or services will be safe and suitable for use under end-use conditions. Nothing in this or any other document, nor any oral recommendation or advice, shall be deemed to alter, vary, supersede, or waive any provision of Suppliers' Standard Conditions of Sale or this Disclaimer, unless any such modification is specifically agreed to in a writing signed by Suppliers. No statement contained herein concerning a possible or suggested use of any material, product, service or design is intended, or should be construed, to grant any license under any patent or other intellectual property right of Suppliers or any of its subsidiaries or affiliates covering such use or design, or as a recommendation for the use of such material, product, service or design in the infringement of any patent or other intellectual property right.

*TOSPEARL is a trademark of Momentive Performance Materials Japan LLC.
*Momentive and the Momentive logo are trademarks of Momentive Performance Materials Inc.
Copyright 2015-2019 Momentive Performance Materials Inc. All rights reserved.
MPM 112-106-00E-GL 04/19 Printed in U.S.A.