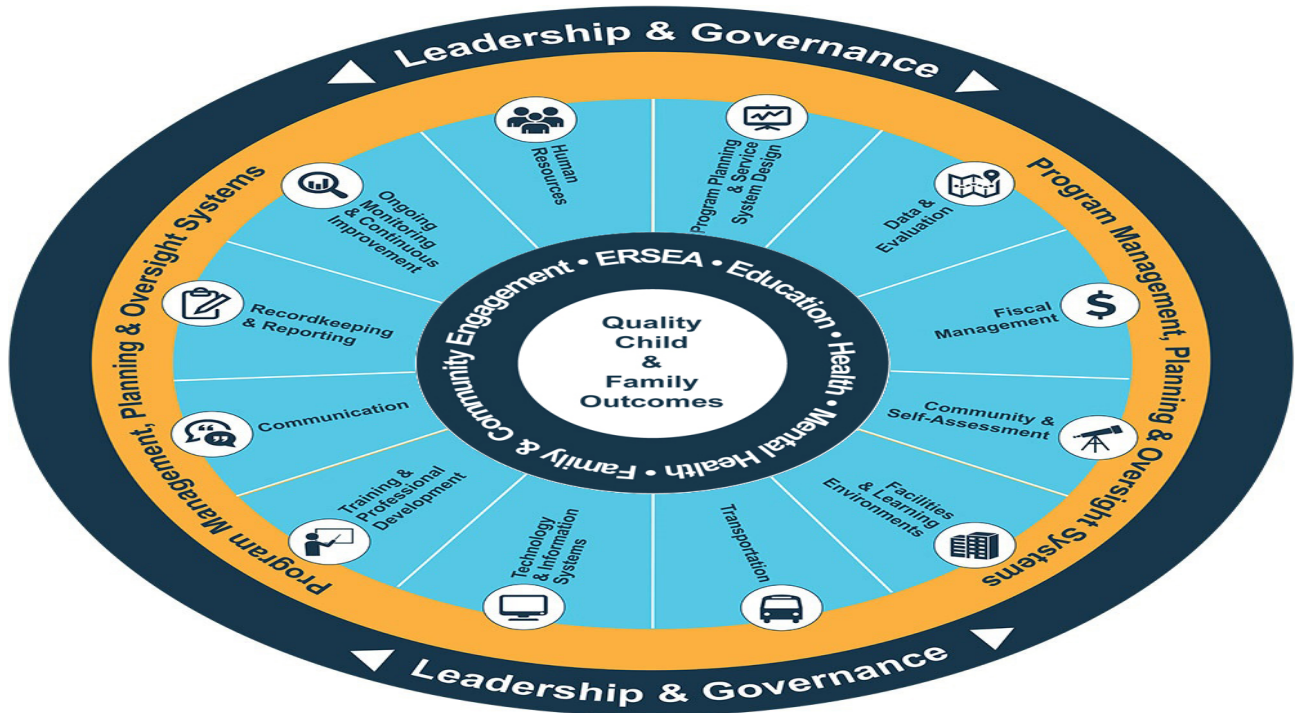


LAFOURCHE PARISH HEAD START

Annual Report to the Public, 2017

Sewing Lafourche since 1991



LPHS Mission Statement: *We produce self-sufficiency and self-esteem by educating children and families today for a better tomorrow.*

Head Start is a national preschool program which provides educational and social opportunities to nurture the healthy development of children. Under provisions contained in the ***Improving Head Start for School Readiness Act of 2007***, Head Start programs are required to make available to the public a report published at least once in each fiscal year that discloses the following information from the most recently concluded fiscal year, except that reporting such information shall not reveal personally identifiable information about an individual child or parent.

Lafourche Parish Head Start is more than just an educational system. It is a community service, a community outreach, a social service, a medical service, and an overall comprehensive program to meet the needs of the families we serve and to educate those families in fostering self-sufficiency. We also encourage and promote transitional services/activities to prepare the children and families prior to attending the local school or public school districts.

Enrollment is based upon a screening system of awarding points to a set of criteria, centering on age, income, homelessness and foster care. The child must be at least three years old before September 30 of the current year. No child under three can be enrolled. Therefore, the common age of Head Start children in a classroom is three or four. Another common factor of the average Head Start child/family is limited or low income, foster care, and/or homelessness.

Overall, we work as a partner in the community we serve. Interagency agreements are common in the delivery of a comprehensive set of services to children.

GOVERNING BOARD:

The *Lafourche Parish Council* is the Governing Board for the Lafourche Parish Head Start Program. This board is the group that is legally responsible for the overseeing of operations of the Head Start program. The *Lafourche Parish Head Start Policy Council* is a group that works in partnership with the grantee, key management staff, and the overall goals of the program.

FUNDING:

Budget Period: January 1-December 31
Program (school) Year: August 2016-May 2017

FY17: Lafourche Parish Head Start was awarded a total of \$ 2,683,215
Allocated as follows:
Head Start Program Operations: \$ 2,654,783
Head Start Training and Technical Assistance: \$ 28,432

Budgetary Expenditures for FY 2017:

Personnel	\$ 1,614,718
Fringe	\$ 655,014
Travel	\$ 0
Equipment	\$ 0
Supplies	\$ 68,800
Contractual (meals)	\$ 70,000
Construction	\$ 0
Other	\$ 246,251

TOTAL NUMBER OF CHILDREN AND FAMILIES SERVED, 2016-17

SCHOOL YEAR:

Lafourche Parish Head Start is funded to serve 292 three-and four-year old children. The actual number of children served was 325. We maintain a waiting list for all sites to assure full-funded enrollment and ongoing services to as many families as possible. Priority will be given to children who will be eligible to attend kindergarten the following year. This program attempts to enroll a minimum of 10% of children with disabilities as participants in the Head Start program.

The Head Start sites are:

North Lafourche- Thibodaux area:

Martin Luther King Head Start, 1 classroom

Marydale Head Start, 1 classroom

Thibodaux Head Start, 5 classrooms

Central Lafourche area:

MGC Head Start, 3 classrooms

Bayou Blue Head Start, 1 classroom

Raceland Head Start, 1 classroom

South Lafourche –Galliano area:

South Lafourche Head Start, 3 classrooms

The lead teacher in all 15 classrooms has an AA or BA/BS degree in early childhood.

SCHOOL CALENDAR:

Our Head Start program provides a nine-month school year (164 days) for children, August through May, with services to parents/children beginning in mid-August; utilizes a 6 ½-hour day schedule; and follows the Lafourche Parish School System calendar for holidays.

ATTENDANCE, 2016-17:

The average monthly attendance was **87.49 %**

PERCENTAGE OF ENROLLED CHILDREN THAT RECEIVED MEDICAL AND DENTAL EXAMS IN THE 2016-17 SCHOOL YEAR:

100 % of enrolled children received medical exams

100 % of enrolled children received dental exams

RESULTS OF THE 2017 FEDERAL REVIEW of CLASS:

The CLASS Review Event is designed to assess the effectiveness of interactions between children and teachers. Collectively, these dimensions assess the extent to which teachers are effectively supporting children’s development, both social and academic. Each dimension is scored on a seven-point scale. The result of this review event is a numerical score that reflects the grantee’s overall performance.

On March 2017, 14 out of 15 classrooms were assessed. These were the results:

Emotional Support: 6.1071 Classroom Organization: 5.5238 Instructional Support: 3.2262

Lafourche Parish Head Start will not have to undergo re-competition for the 2019 grant because of the results of the federal reviews including CLASS.

RESULTS OF PREVIOUS FEDERAL REVIEWS

All Head Start programs undergo extensive Federal Reviews. 10-15% of Head Starts qualify for the modified Five-Year Differential Monitoring Process. Lafourche Parish qualified based on the previous review results, fiscal review results, audit results and the Regional Office Input.

During the month of February 2016, LPHS went through the **HSKI-C**. The HSKI-C is used to gather information to assess the grantee’s performance across the following content areas:

- Fiscal Integrity
- Leadership and Governance
- Management Systems
- Comprehensive Services and School Readiness, which includes Child Health & Safety, Family & Community Engagement, and Child Development & Education.

We were compliant in all areas and therefore LPHS met the eligibility criteria to proceed with the Differential Monitoring Process.

In March 2016, LPHS participated in the **Environmental Health and Safety Review**. This instrument is used to gather information to assess the grantee performance in ensuring safe and healthy environments for children, families and staff.

Based on the information gathered during the **Federal Review of CLASS, HISK-C, and Environmental Health and Safety** review, it was determined that this Head Start program is in compliance with all applicable Head Start Program Performance Standards, laws, regulations, and policy requirements. We have had no findings or non-compliances.

RESULTS OF THE MOST RECENT FINANCIAL AUDIT:

The most recent financial audit for Lafourche Parish Government contained no findings or non-compliances.

RESULTS OF THE MOST RECENT CACFP AUDIT:

In April 2016, the State of Louisiana audited our program operations and compliance with Federal and state requirements. The review was accepted and closed.

MEMBER OF THE LAFOURCHE PARISH EARLY CHILDHOOD

NETWORK: Participated in a collaborative leadership structure, network meetings, and developed a unified application process with the Lafourche Parish School System and Early Childhood Centers that receive **Child Care Assistance Program (CCAP)** funding. For the school year 2016-2017, the Early Childhood Network funded a six-hour training in Conscious Discipline for the Head Start staff and other members of the Early Childhood Network. The Coordinated Enrollment Committee is chaired by the Head Start ERSEA manager. Having the manager chair this committee has allowed Head Start to design the application to meet the needs of Head Start as well as the requirements of the LEA. Parents are provided a one-stop shop for early childhood learning services serving children birth to five. By June 1 selection of children for the three types of services has been completed and each agency can establish classes without fear of losing children to the other agencies. This collaboration between the school system, Head Start, and nine participating childcare early learning centers has provided smooth transition between centers, Head Start classes and the local school system.

INFORMATION ABOUT PARENT INVOLVEMENT ACTIVITIES, 2016-17:

Parents are the most important people in their child's world. Thus, LPHS takes an active role in the fostering of parent education and engagement. Our program provides a variety of opportunities for parents to become engaged throughout the program year.

Parents are engaged in a parent-night orientation where they are introduced to the many opportunities to learn and participate in the program. During orientation, parents are presented with extensive resources provided in our parent handbook to begin the process of helping families connect with what they need to aid them in the health, safety, education, and empowerment of their family. These resources are updated annually with the input of the Family Services Specialists.

Parent engagement occurs most commonly through home visits or as parents spend time in Head Start classrooms. Parents also have the opportunity to be engaged in activities such as:

- Parent Committee meetings
- Parent-teacher conferences
- Open House
- Fall Family Fest
- Registration; Parent Orientation activities
- Let's Get Acquainted Days
- Family Literacy Night for transitional children and families
- Prime Time Literacy in South Lafourche and Raceland
- Policy Council meetings
- Volunteering in various program activities; field trips
- Interview teams to hire new staff
- The LPHS Self-Assessment process
- Male Involvement activities
- Selection Criteria Committee
- Family Swing Out

Parenting Centers are located at the Marydale Head Start site in Thibodaux and in the Lockport area at MGC.

LAFOURCHE PARISH HEAD START'S EFFORTS TO PREPARE CHILDREN FOR KINDERGARTEN,

The Lafourche Parish Head Start readiness goals are aligned with:

- The Head Start Early Learning Outcomes Framework
- The Louisiana State Early Learning Standards

CURRICULUM and STUDENT ACHIEVEMENT:

The LPHS program purchased fifteen Creative Curriculum Kits. Creative Curriculum is a research-based, nationally-recognized curriculum, which outlines goals in the eight domains of learning including:

- social emotional development
- approaches to learning
- literacy
- language development
- math
- science
- creative arts
- physical health/ development

Teachers attended a twelve hour training on the implementation of an updated edition of Creative Curriculum. The trainer, Carolyn Ayghan, was an author of the program.

The program guides the staff in the provision of materials and activities to support these goals in preparing children for kindergarten. Experiences are provided in classrooms and homes to meet the child's individual needs and stimulate learning in all developmental areas, with strong emphasis on language/cognitive skills, early literacy skills, and the development of positive social and learning skills. Health educational activities in the curriculum include daily tooth brushing, monthly nutrition activities, and other activities designed to encourage development of healthy habits and reduce fear and anxiety related to preventive care exams.

LPHS staff utilize an individualized observation and planning process for each child/family. Staff assess, with the parent, the child's developmental strengths and needs across the eight domains of learning. Information is obtained through informal interviews with the parent, on-going TSG (Teaching Strategies Gold) Assessment tools, and, if applicable, information from a child's Individual Family Services Plan or Individualized Education Plan. Information from these sources is then used to individualize experiences and services for children and families, and to create ongoing plans to address the child's developmental objectives and goals. LPHS provides support to the parents of special needs with one-one parental support from the Head Start Assistant Director. Lafourche Parish Public Schools provide services to Head Start children with IEPs or RTIs.

LPHS staff, parents and collaborating agencies plan activities to support children's transition to

kindergarten. Such opportunities may include attending school functions or libraries, going on classroom visits, and meeting with kindergarten teachers, principals, and special educators.

Lafourche Parish Head Start has a collaborative agreement with Lafourche Parish Public Schools that promotes a seamless transition from Lafourche Parish Head Start to kindergarten.

Respectfully submitted by:

Vicki Adams
Lafourche Parish Head Start Director