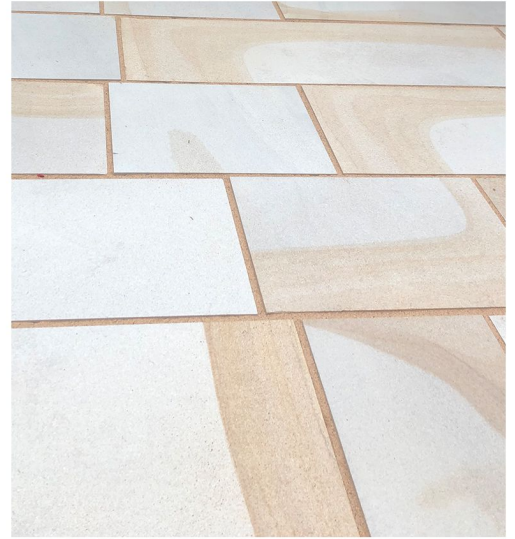


MOUSELOW YORKSTONE



Technical Results

Description	Hard and durable fine-grained Carboniferous Sandstone	
Country of Origin	UK	
Geological Type	Carboniferous, Sandstone	
Colour	Blue/Grey heart with Buff-Brown rings	
Density	2410 kg/m ³	
Compressive Strength	Mean 124 MPa LEV 114MPa	BS EN 1926 (2006 Annex C)
Water Absorption	2.7%	BS EN13755:2008
Porosity	14.7%	BS EN 1936 (2006)
Flexural Strength (3-point)	LEV 14.8	MPa BS EN12372 (2006)
Frost Resistance Flexural	LEV 10.7 - 56 cycles	BS EN 12371:2010
Frost Resistance Compressive	LEV 109 MPa - 56 cycles	BS EN 12371:2010
Saturationco-efficient	0.69%	
Abrasion Resistance	19.5 Mean	BS EN 1341:2012
Slip Resistance	Ave. Wet 85; Dry	88 BS EN 1341:2012
Average Block Size	1400L x 900W x 700H	

Please note that stone is a natural product and all results are subject to variation



Quarry Location

**Mouselow Quarry,
Dinting,
Glossop,
Derbyshire**

RGB Landscapes

**Ropewalk House,
2 Cottage Terrace,
Nottingham,
NG1 5DX**

**T: 0115 985 9100
E: sales@rgblandscapes.co.uk**

www.rgblandscapes.co.uk