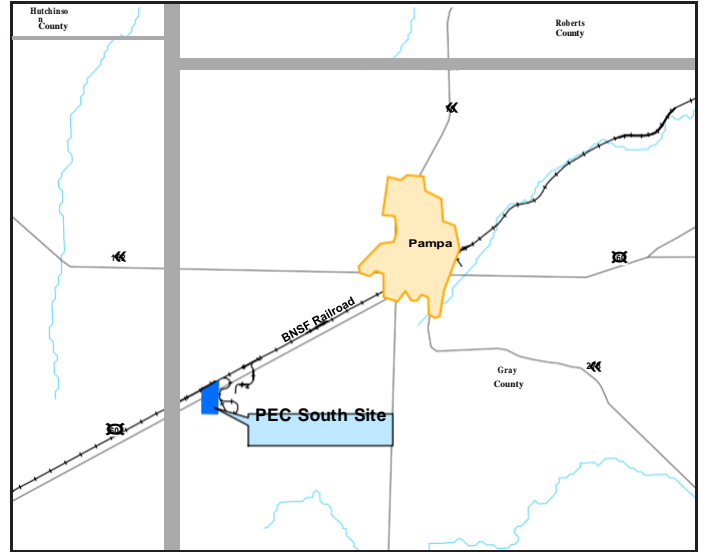
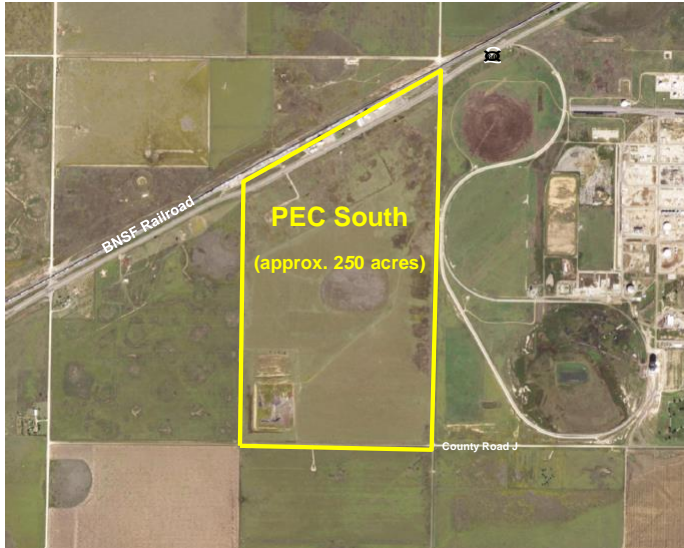


PAMPA ENERGY CENTER SOUTH PAMPA, TX

INFORMATION SHEET

CORPORATE ECONOMIC DEVELOPMENT



GENERAL SITE INFORMATION

Location	5 miles west of Pampa, TX on U.S. HWY 60
Owner	Pampa Economic Development Corporation, 107 E. Foster Ave, Pampa, TX
Size	Approximately 250 acres
Zoning	No zoning
Asking Price	Lease only at \$50,000/yr. for minimum of 5 yrs. and leasee would create a minimum of 10 full-time jobs at site; annual price would be reduced if agreed upon lease was longer than 5 yrs and/or if more than 10 jobs were created.
Highway Access	3 miles to I-40, 8 miles to I-27, 8 miles to US Hwy 87, 3 miles to US Highway 287, 1 mile to US Hwy.
Air Access	6 miles (10 minutes) to Amarillo International Airport
Rail Access	Served by BNSF Railway

UTILITY INFORMATION

Electric Power	Xcel Energy. 3MW at 13.2kV, in primary 3-phase 'Y' power available
Natural Gas	Oneok Inc. can supply 140 MCFD at 100 psi.
Water	Pampa Energy Center (PEC) would be able to provide non-potable water to east edge of the parcel. Tenant responsibility to install necessary piping. Also possible for tenant to tap into an existing well on SW of property or install a new well but only on the west edge of the property.
Sewer	City of Amarillo. 24-inch main. Pre-treatment requirement COD (BOD) = 300mg/l (per 1 million gallons); TSS = 400 mg/l (per 1 million gallons).
Storm Water	None currently provided.
Telecom/Fiber	AT&T

PAMPA ENERGY CENTER SOUTH

SITE DUE DILIGENCE DOCUMENTATION AVAILABLE (REPORTS AND DETAIL AVAILABLE)

Title Commitment	S	Archeological and Historic Use Assessments	<i>Not required</i>
Aerial Site Views and Maps	S	Park Covenants and Restrictions	S
Park Master Plan		Transportation Access Maps	S
Utility Service Maps	S	Geotechnical Study / Soil Survey	S
Site Dimensions and Configuration	S	FEMA Flood Plain Designation with map	S
Wetlands Delineation and Map	S	Air Attainment Status	S
Phase 1 Environmental Assessment	S	Endangered Species Assessment	<i>Not required</i>

GENERAL COMMUNITY INFORMATION

Community Profile and Demographics	S	Letters of Support	S
State and Local Incentives Overview	S	Business and Industrial Support Services and Amenities Profile	S

Economic Development Contact:

Name: Clay Rice
Executive Director

Address: Pampa EDC
107 E. Foster Avenue
Pampa, TX 79065

Email:
CRice@pampaedc.com
P: 806.665.0800

Xcel Energy Contact:

Name: Dan Pfeiffer
Senior Director,
Corporate Economic
Development

Address: Xcel Energy
1800 Larimer Street
Suite 800
Denver, CO 80202

Email:
Dan.Pfeiffer@xcelenergy.com
P: 303.571.7180

XCEL ENERGY MAKES NO WARRANTY OR REPRESENTATION AS TO THE ACCURACY, QUALITY, AVAILABILITY, COMPLETENESS, OR SUITABILITY OF ANY INFORMATION CONTAINED HEREIN. ALL INFORMATION MUST BE INDEPENDENTLY VERIFIED. THE USER SHALL NOT RELY ON ANY OF THE INFORMATION CONTAINED HEREIN AND SHALL ASSUME ALL RISK AND RESPONSIBILITY ARISING FROM ITS USE.

