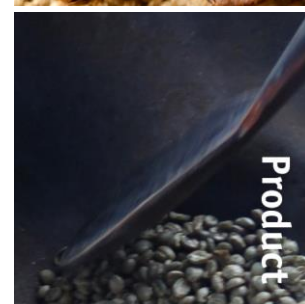


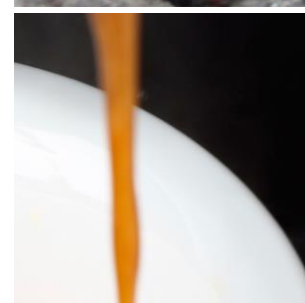
# V'Eco 82|24 [aL] CoEx® bean2cup



Product



Information



## Key features

- Coffee based front
- Visible beans
- CoEx brewer & whole bean grinder
- 10.4" full colour touch screen
- Intuitive user interface
- Glass detecting cup sensor
- Separate hot water outlet

## Options

- Front branding
- On-screen communication options
- Connect.Me® [online monitoring]
- Table base for 2 Liter jugs
- Base cabinet with condiment trays
- Chilled water cooler in base cabinet

# V'Eco 82|24 [aL] CoEx® bean2cup



## Dimensions

	mm
Machine	h* 876
*Bean canisters will stick out 80 mm. Total height 796 + 80 = 876	w 365
	d 420
	Base Cabinet
	w 365
	d 420
Weight	45 kg

## Specifications

- MoVeC-ICEq® & USB upload
- 10,4" full color touch screen
- User Interface : DJD/Scope
- Menu structure for selections
- Direct start optional
- Multiple languages possible
- Number selections
- Jug functions menus
- Strength selection menus
- Connection for payment systems [MDB]
- Boiler 2x 0.4L

## Connections

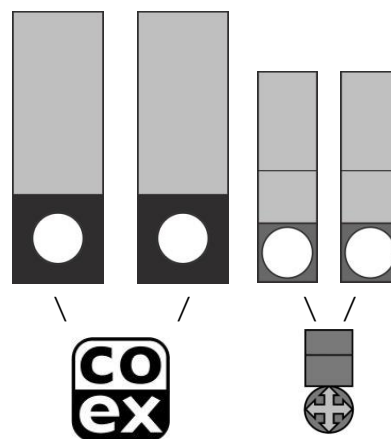
- 220-240 Volt AC
- 50/60 Hz
- 2900 Watt
- 10-16Amp
- ¾" BSP [15 mm] mains
- waterfilter & waterlock recommended
- USB
- LAN or Wifi

## Selections

Whole bean coffee I	Hot Chocolate
Whole bean coffee II	Chocomilk
Espresso I	Espresschoc
Espresso II	Cappuccino
Double Espresso I	Cafe au Lait
Double Espresso II	Cafe Latte
	Whitener
customized recipes **	Hot Water
Chilled [sparkling] Water **	Jug Selections

\*\* optional, ask for details & conditions

## Canisters



## Capacities

	#	Size	Gram	Cups
Whole Bean Coffee I	1	BC	1100	150
Whole Bean Coffee II	2	BC	1100	150
Chocolate	3	60	1200	60
Milktopping	4	60	800	130

Waste bucket

≥ 180

[number of cups may vary depending on settings]

