



SEASONS ONE



seasons-niseko.com

Curated by **Mandala.**

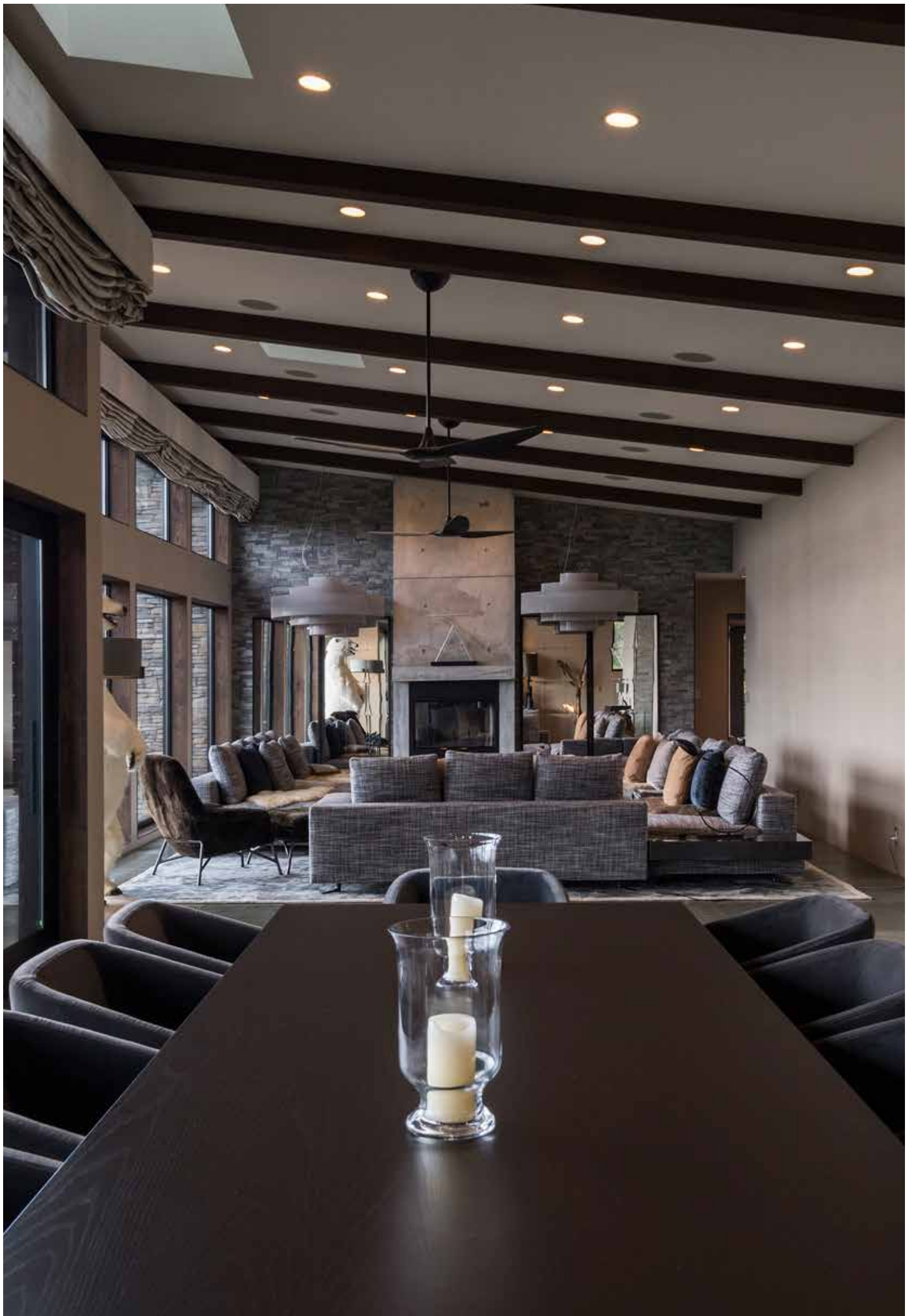
Welcome to **Seasons Niseko**, and our single-minded commitment to curating memories of a lifetime for every guest we host.

The Seasons Niseko chalets are the only luxury ski-in chalets with access to five star international concierge services in Niseko.

Set among the stunning landscapes of Annupuri and Higashiyama, we invite you into a whole new world where expectations truly have no limits.

Welcome to the new level of luxury chalet living and world-class skiing. Together, we curate your bespoke experience, the way you define it.





THE CHALET

Seasons One sits within a private gated compound nestled in a forest of stunning Japanese pine trees. This extremely impressive 5-bedroom ultra-luxurious ski-in home caters to the whole family.

This home focuses on entertaining, family, cooking and relaxing. Its features include a large indoor (personally adjusted) heated pool, 5 zone Sound System complete with Pioneer DJ decks, fully stocked bar with the very best liquors and tap beer, billiards table, outdoor decks, eight-seat cinema, authentic pizza oven, sauna, 1000-bottle wine cellar, vast lawns and sweeping views of mountain ranges and ski fields.

Our International chalet concierge team includes driver, chef and chalet manager for an unparalleled luxury holiday experience.

THE CHALET PROVIDES

- 3 en-suite king bedrooms
- 1 family bunk room with 4 beds (sleeps 6)
- 1-single bed with en-suite bathroom
- Library & office (double futon substitute)
- Indoor heated pool
- European Sauna
- 8 seat luxury cinema with Dolby surround sound
- Indoor wood log fireplace and outdoor fire pit
- Signature range of hair and body care bathroom products
- Apple TV and X-Box
- Personal key pad home access for privacy and security
- IPAD fully loaded with concierge and compendium information
- Hotel size heated boot and ski storage room

YOUR STAY INCLUDES

- Seasons Niseko host meet and greet on arrival at Chitose Airport providing return luxury airport transfers and bento box delights
- Dedicated Seasons Niseko Chalet team including Chalet Manager, Chef, Sous-chef, Chauffeurs, Chalet Attendants
- Your Personal chef provides evening meals perfectly curated to ensure you connect with both local as well as international cuisine
- Daily gourmet breakfast, and afternoon tea delights and surprises
- Your own private dream bar can comfortably host 8-people: permanently stocked with complementary house spirits, mixers and soft drinks
- Complementary Sapporo beer tap
- Bespoke collection of complementary house wines (exclusive wines from the private cellar available on request*)
- Two luxury house cars and chauffeurs for transfer to the slopes or out to dinner
- In-home skis, boots and snowboard fitting on arrival*
- Daily 5-star housekeeping and turn down services
- One-hour in home massage per adult per stay**

* Charged at check out

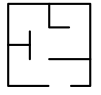
** This must be booked before arrival



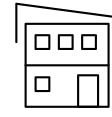
Ground Floor



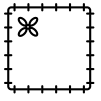
5 BEDROOM



650 SQM



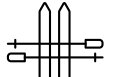
2 STOREY



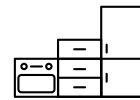
2,300 SQM GARDEN



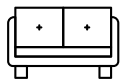
MOUNTAIN VIEW



SKI-IN



CHEF-GRADE KITCHEN



PRIVATE LOUNGES

First Floor



INDOOR POOL



BAR



WINE CELLAR

Terms and Conditions

- All houses are non-smoking by Japanese law
- Check-in is at 4pm
- Check-out is at 10am
- 50% deposit payment is required to secure a booking. Full payment must be paid at least 60 days prior to arrival
- If the arrival date is less than 60 days, full payment is required to secure the booking.

Cancellation

- 50% deposit payment will be forfeited if you wish to cancel a booking
- 100% of the payment amount will be forfeited if the cancellation is made after 60 days prior to arrival



Suites at Seasons One.



MASTER BEDROOM - 40.7 sqm
1/F

The stunning master bedroom features breathtaking views East to Mt. Yotei. Light filled during the day, and calming darkness from sunset. The ensuite features the highest quality finishings, including a rain shower.



EN SUITE GROUND FLOOR
MASTER BEDROOM - 15.7 sqm
G/F

Overlooking the ground floor terrace, a peaceful room to enjoy Niseko iconic powdered snowfall outside through sweeping room-length floor to ceiling windows.



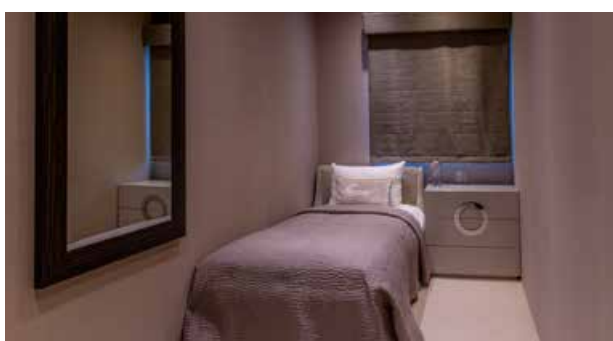
FIRST FLOOR DOUBLE ROOM - 24.8 sqm
1/F

With direct access to the beautiful lounge area, the room features a double bed, ample storage, stunning uninterrupted views, and an en-suite with rain shower and luxury amenities.



THE BUNK ROOM - 24.8sqm
G/F

A quiet room adjacent to the games area. Featuring two bunk beds (double beds on the bottom), with two large cupboards and additional storage under the beds. All beds have reading lamps and charging facilities. The room also features an en-suite.



THE STAFF ROOM - 8.9sqm
G/F

A cosy, plush single room with a cupboard, reading lamp, bedside table and charging facility. The room also features an adjacent bathroom en-suite.



THE EXPERIENCE



seasons-niseko.com

Curated by **Mandala.**

Our concierge team will work with you prior to arrival to curate all additional services to ensure your holiday of a lifetime. Whether it's "The Table of the House" at either the most prestigious Michelin star restaurants in the area, or the local hidden gem or a thrilling night ski, our concierge is on hand to ensure it happens seamlessly.



AIRPORT
CHAUFFEUR



CHAUFFEUR



IN-HOUSE
CHEF



VIP CONCIERGE
SERVICE



HOUSEKEEPING
UNPACKING



TURN DOWN
PRESSING, IRONING



EXPERT WHISKY/SAKE
TASTING AND FOOD PAIRING

Upgrade your package to include:

FOR THE ADRENALINE JUNKIE

- Extreme 'cat' skiing or snowboarding, taking you beyond the popular piste to the REAL powder to carve your own trails.
- The best and most experienced ski guides and instructors, taking you to private mountains and new adventures. Ever-tried hiking up a volcano and skiing into a crater?

FOR THE CULTURALLY CURIOUS

- Visit the traditional artisans of Hokkaido – unlocking traditions and pastimes of Japan's finest craftsmen and women.
- Your own photo / video shoot courtesy of our expert photographic and video graphic team. Visit extraordinary locations and capture your friends and family at their very best.
- Day trips to Otaru, Kutchan, Toyako and beyond.

FOR THE EPICUREAN

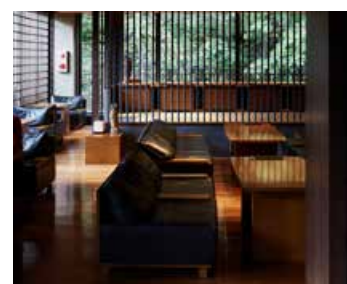
- Preorder your favorite wine from the Season Niseko curated wine list, stored till your arrival in the private cellar.
- "Epicurean safaris" to discover local seasonal delicacies and the secrets of Japanese cooking. You'll be accompanied by your very own expert chef and translator as guide. Select your dinner as you go!
- "Beyond the distillery tour" – authentic whisky and sake experiences and tastings.
- Food and saki pairing evenings in the comfort of your own chalet.
- A fresh delicious delivery of oysters or snow crab legs from the coast to shuck and eat in the comfort of your own chalet.
- Learn Japanese cooking including a trip to the local farmers market to source the freshest local ingredients.

TO RELAX & UNWIND

- Tranquil onsens for the ultimate in Japanese relaxation. Choose from one of many onsens all offering different mineral properties for your exact needs. At our local Yugokorotei Onsen you can luxuriate in 56.4 degrees Celsius 100% natural mineral water.
- The finest Japanese massage and spa therapy sessions in the comfort of your chalet.
- Yoga or tai chi in the comfort of your chalet.

FOR KIDS

- Our ski instructors not only teach kids the pizza techniques of skiing but are happy to take an hour or two building igloos or snow forts. Snow fights anyone?
- Kids will love a tour through the snow in a sleigh pulled by reindeers.
- "Make your own pizza" nights at home.
- Ice cream factory visits and ice-cream making classes... and lots of tasting.
- Babysitters and Nanny services.





info@seasons-niseko.com