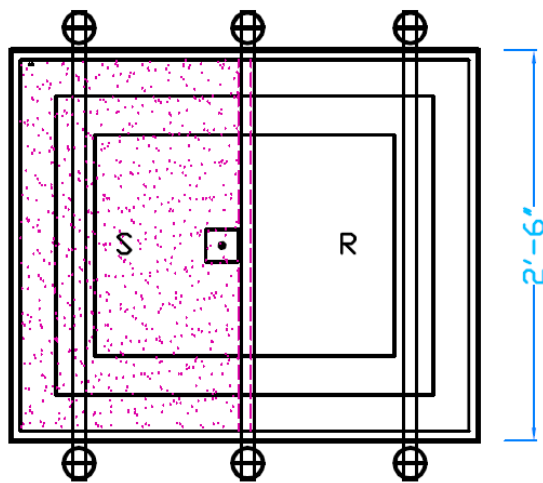


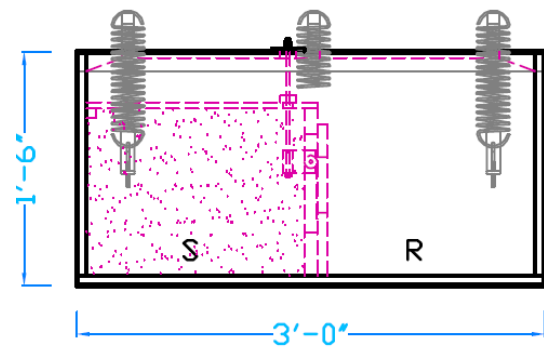


ELECTRIC ORGAN BLOWER COMPANY

## Blower Reservoirs Single-Curtain & Double-Curtain



Standard Single-Curtain  
Blower Reservoir  
View from the top



Standard Single-Curtain  
Blower Reservoir  
View from the side

A pipe organ wind system needs to have a series of reservoirs between the blower and the windchest to provide adequate wind. The blower reservoir is a main component in this process. We offer two standard sizes: A single-curtain static blower reservoir measuring 30 in. by 36 in. AND a double-curtain static reservoir 30 in. x 48 in. For organs exceeding 50 ranks, we recommend the double-static reservoir. Need a custom design or size? Contact us for assistance.