



## C4408D, C4408 ActiV Detector Bases



Manufactured in the UK by C-TEC, our ActiV C4408D diode base and C4408 non-diode base are fully compatible with C-TEC's entire range of ActiV conventional smoke and heat detectors.

Stylishly designed in white polycarbonate, each base includes an integrated detector/base locking mechanism to help prevent detector heads being tampered with, a head removal tool and a plastic ID tag allowing installers to identify which zone a detector/base has been connected to.

With ample working space, two fixing slots and seven nickel plated steel terminals (+Ve IN, +Ve OUT, Remote LED +Ve, two 0V connections and two screen connections) that can take up to 2.5mm<sup>2</sup> cable, the bases can be ceiling mounted in any orientation due to the true 360° viewing angle of the LED indicator strips on all ActiV detectors.

The C4408D diode base includes a Schottky diode and is ideal for use in systems requiring active 'head out' end of line monitoring (a requirement of UK installation standard BS 5839-1) whilst the C4408 non-diode base is ideal for use in systems that do not have this requirement.

*Illustration shows a C4408D base with its head/base locking mechanism, removal tool and ID tag in place.*



0359-CPD-0183

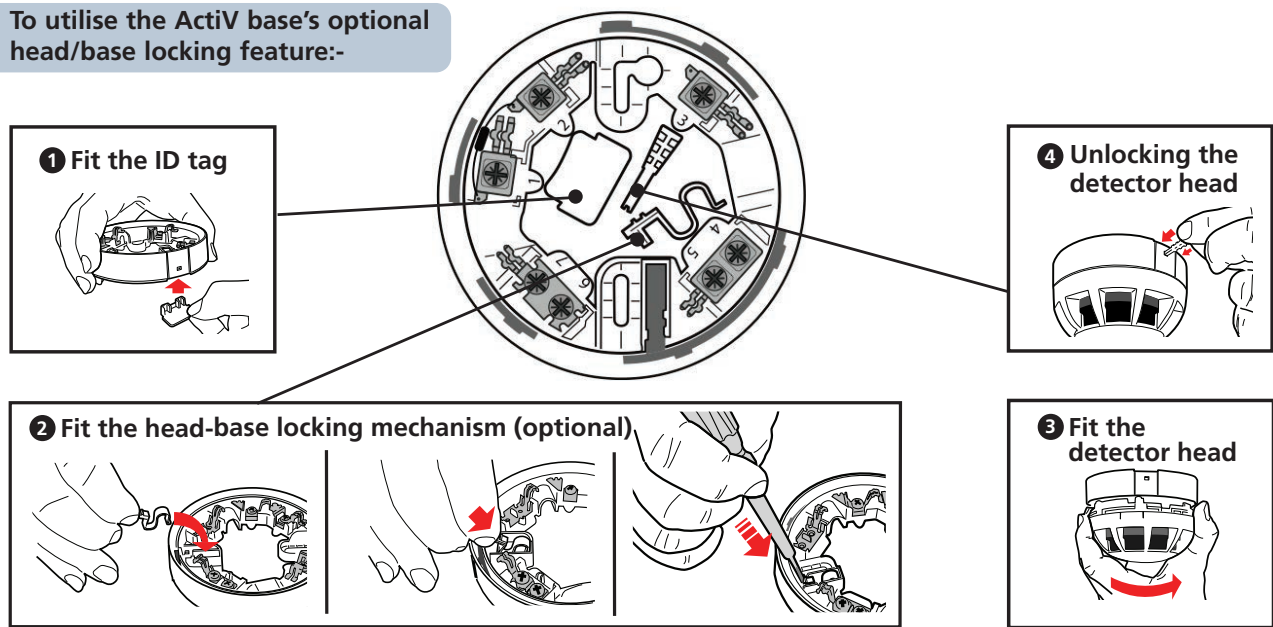
## Key features

- ▶ Third-party certified to the relevant parts of EN54 in conjunction with our ActiV detectors by leading notified approval body Intertek
- ▶ Easy to fit
- ▶ C4408D Diode Bases (for systems requiring active 'head out' end of line monitoring) and C4408 Non-Diode Bases available
- ▶ Can be ceiling mounted in any orientation due to the true 360° degree viewing angle of the LED indicator strips on all ActiV smoke and heat detectors
- ▶ Integrated detector/base locking mechanism, head removal tool and ID tag provided as standard
- ▶ Stylish white polycarbonate finish
- ▶ Simple 'click and twist' design of head and base ensures reduced installation time and inspection costs
- ▶ Remote LED connection provided for optional connection to a BF318 Remote LED (to assist with the identification of hidden or out-of-sight detectors)
- ▶ Nickel plated steel terminals can accept standard or enhanced fire rated cable of up to 2.5mm in diameter
- ▶ Lots of working space and two fixing slots
- ▶ Compatible with C-TEC's entire range of ActiV conventional smoke and heat detectors, including the:
  - C4403A1R Rate-of-Rise Heat Detector
  - C4403A2 Fixed Temperature Heat Detector
  - C4403B Fixed Temperature Heat Detector
  - C4416 Optical Smoke Detector
  - C4414 Multi-Sensor Fire Detector
- ▶ UK manufactured at C-TEC's Intertek, LPCB, VdS and BSI inspected headquarters in the north west of England

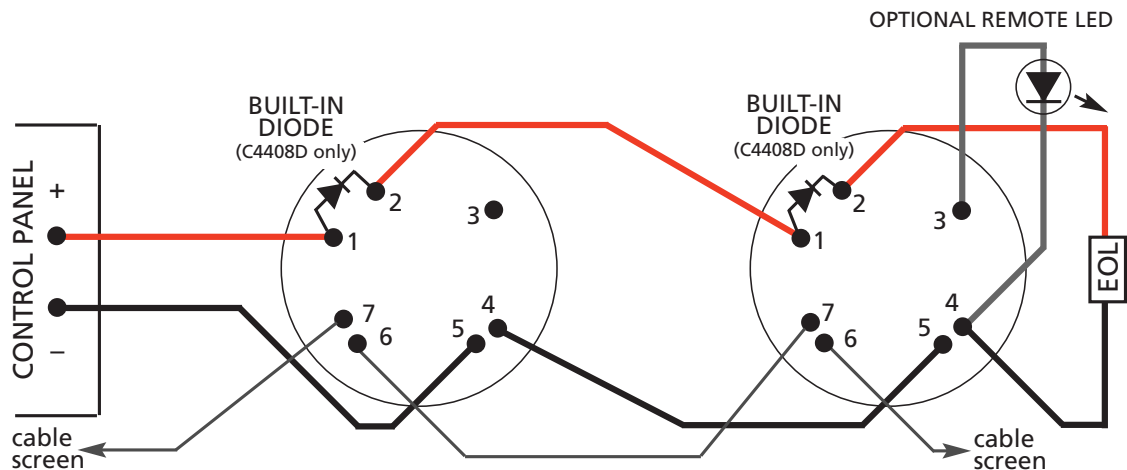


## Head/base locking mechanism

To utilise the ActiV base's optional head/base locking feature:-



## Wiring details



- Correct polarity must be observed.
- Do not mount bases on uneven surfaces.
- Terminals can accept 0.4-2.5mm<sup>2</sup> wiring.

- For optimum performance we recommend screened cables are used.
- See our ActiV Wiring Guide for more details.

## Technical Data

<b>Part number/description:</b>	C4408D Diode Base C4408 Non-diode Base
<b>Supply wiring:</b>	2-wire monitored, polarity sensitive
<b>Base connection 1:</b>	+Ve In (diode connection on C4408D only)
<b>Base connection 2</b>	-Ve Out (diode connection on C4408D only)
<b>Base connection 3</b>	Remote LED +Ve
<b>Base connection 4</b>	0V
<b>Base connection 5</b>	0V
<b>Base connection 6</b>	Screen
<b>Base connection 7</b>	Screen

<b>Terminal size</b>	Can accept up to 2.5mm <sup>2</sup> fire rated cable
<b>IP Rating:</b>	IP42
<b>Dimensions:</b>	102.2mm diameter, 20.5mm depth
<b>Weight:</b>	55g
<b>Materials:</b>	White polycarbonate rated to UL94 V-2 with bright tin plated steel terminals fitted with nickel plated steel screws/washers
<b>Certifications &amp; approvals:</b>	Third-party certified to EN54 in conjunction with our ActiV detector approvals by notified approval body Intertek