

XEROX

DocuMate 262



Duplex scans at 66^{*} IPM

**The New Xerox® DocuMate™
262 Speeds Ahead of the
Competition!**

- **33 pages per minute and 66 images per minute* in duplex**
- **One Touch feature eliminates up to 12 steps in scanning documents**
- **Superior image quality and OCR accuracy with Kofax VRS software**
- **Convert documents into PDF files that can be scanned to network drives for sharing**
- **Hi-Speed USB 2.0 interface (USB 1.1 compatible)**
- **Small footprint fits easily on the desktop (6" x 13")**

**One Touch
scans directly
to searchable PDF!**

*Up to 66 ipm at 200 dpi, black & white

Xerox DocuMate 262

There's a lot to like about the DocuMate 262 – the faster, better, easier-to-use workgroup scanner solution. 30% faster than the leading brand workgroup scanner in duplex mode, the DocuMate 262 is the price and performance leader in its category. It also includes a powerful suite of applications that improve image quality, OCR accuracy, and document management. And its revolutionary One Touch scanning and small compact size make it easy to use on any desktop or in any department.

Work Faster

The DocuMate 262 quickly handles many different tasks at hand – right at the desktop. It has a 50-page automatic document feeder that scans up to 66 images per minute using dual CCDs – doubling your speed and productivity for two-sided documents.

Work Better

The DocuMate 262's powerful software, robust functionality, and hardware specifications deliver the speed and quality you would expect from a more expensive scanner. A searchable PDF feature lets you send, copy, paste, re-use, and highlight text while maintaining the integrity of the original document image.

The bundled Kofax VRS software provides such capabilities as autoexposure and wide angle de-skew. VRS also helps improve the accuracy of recognition software,

thereby reducing the need for manual correction of intelligent character recognition and OCR results.

The DocuMate 262 also features:

- 600 dpi optical resolution
- 48-bit internal color
- Hi-Speed USB 2.0 interface

And document size is not an issue for the DocuMate 262. It scans everything from business cards and photos up to legal-size documents, with superior image quality.

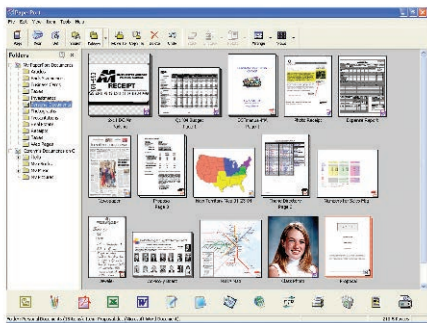
Work Easier

The DocuMate 262's One Touch technology scans from the desktop to nine different customizable applications or devices, and documents can be converted to text-searchable PDF in one easy step. Now you can instantly search documents for keywords or phrases.

The DocuMate 262's one-step installation is a snap with the plug and play Hi-Speed USB 2.0 port. And its small footprint, just 6" x 13", makes it ideal for the desktop.

One Touch Scanning Boosts Productivity

The DocuMate 262's One Touch technology lets you send documents to nine preselected or user-defined destinations, eliminating up to 12 steps in the scanning process. Think improved speed, performance, and most importantly, productivity.



ScanSoft PaperPort Pro Office
The easiest way to organize, find, and share all your paper, PDF, and digital documents.

Superior Image Quality and OCR Accuracy

Get superior results with Kofax VirtualReScan, an award winning, patented technology that automatically ensures the best possible image quality and OCR accuracy for scanned document images. As pages pass through the scanner, VRS performs a multipoint inspection of each document, instantly checking and adjusting alignment (skew), brightness, contrast, and image clarity.

Scan to Text-Searchable PDF

Transform volumes of paper or photos into organized digital files that you can quickly find, use, and share. In PDF format, you can instantly search documents for keywords or phrases. This gives them additional archival benefits beyond traditional storage, and the widely accepted PDF format lets everyone view and print documents – on any computer.

Convert Existing Files to PDF

The DocuMate 262's PaperPort Pro Office software lets users convert existing electronic files to PDF for storage or transfer. Supported file types include Microsoft Office, Corel, and AutoDesk documents, as well as the popular TIF, MAX, JPG, and BMP formats.

Complete Batch Scanning, Image Manipulation, and Multipage Support

The included QuickScan 3.5 software provides all the necessary capabilities for high-speed ISIS® based scanning, image enhancement, viewing, annotation, and printing of images for both black-and-white and color pages. Developed by Pixel Translations, the creators of ISIS, QuickScan's strengths include features such as batch scanning, PDF support, image manipulation, multipage support, and more.

Select Multiple Document Destinations

DocuMate 262's One Touch feature lets you send documents to preselected destinations, including searchable PDF. Quickly turn PDF files and stacks of papers into easily editable word processing and spreadsheet documents.

Compatible With More Than 250 ISIS-Certified Applications

ISIS drivers certified by Pixel Translations ensure that the DocuMate 262 functions properly with the more than 250 commercially available ISIS-compatible imaging and document management applications.

Software That Gets the Job Done

The DocuMate 262's robust software suite includes comprehensive ISIS and TWAIN support:

- Kofax VRS 3.5
- Pixel Translations QuickScan 3.5
- ScanSoft PaperPort Pro Office
- ScanSoft OmniPage Pro 12

DocuMate 262 Product Specifications Model# XDM2625D-WU

| | |
|-------------------------------|--|
| Scan Speed | |
| Black & White, 200 dpi | Up to 33 ppm simplex / 66 ipm duplex |
| Color, 150 dpi | Up to 33 ppm simplex / 42 ipm duplex |
| Optical Resolution | 600 dpi |
| Scanner Bit Depth (color) | 48-bit internal (16-bit A/D converter recognizes over 281 trillion colors) |
| Scanner Bit Depth (grayscale) | 16-bit internal (65,536 shades of gray) |
| Output Bit Depth | 24-bit color, 8-bit grayscale, 1-bit black & white |
| Scan Method | Fast Duplex Sheetfed |
| Interface | Hi-Speed USB 2.0 (USB 1.1 compatible) |
| Dimensions | 13"(w) x 6"(d) x 12.25"(h) |
| Weight | 8.6 lbs. |
| ADF Maximum Document Size | 8.5" x 14" |
| ADF Minimum Document Size | 3.5" x 2" |
| ADF Capacity | 50 sheets (18 lb. paper) |

Minimum System Requirements

- Pentium® II or equivalent processor
- Windows® 2000/Me/XP
- 128MB RAM (256MB RAM for Windows XP)
- 200MB available hard disk space
- CD-ROM drive
- USB port

Contents

- DocuMate 262 scanner
- Power Supply
- USB 2.0 Cable
- Quick Install Card
- Technical Support Card
- User's Manual
- CD-ROM including:
 - Kofax VRS 3.5
 - Scanner Drivers (TWAIN and Certified ISIS Driver)
 - ScanSoft PaperPort Pro Office
 - ScanSoft OmniPage Pro 12
 - Pixel Translations QuickScan 3.5
 - ArcSoft PhotoImpression 4.0



For more information about the Xerox line of scanners, visit www.xeroxscanners.com