



BARNRACK2.0

Pitched Roof Mounting System

LOW COST - NO LEAKS - QUICK INSTALL

BARNRACK2.0 is a corrugated-roof mounting solution, adding adaptability and flexibility for both fully-railed and shared-rail solar installations. The lightweight aluminum rails couple with corrugated roof connections providing a rigid solar platform and a design backed with leak-proof attachments.

BARNRACK2.0's adaptable design is complimented by its simple installation and feature-rich mounting rails. The KB10 rails offer integrated wire management, side mounting, and common fasteners for a clean and fast installation.



FEATURES

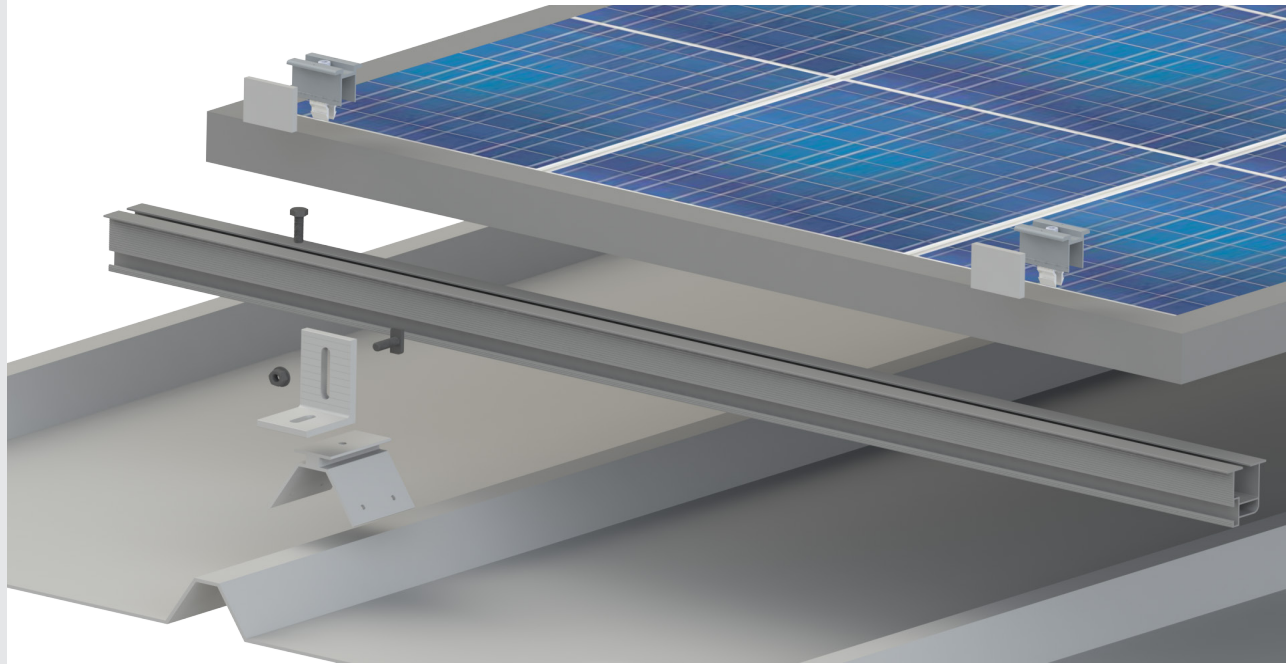
- EPDM gaskets provide a secure, watertight attachment
- Integrated wire management
- Configured for fully-railed and shared-rail systems
- Side-mounted with T-bolts
- Low overall system weight
- 25-year standard product warranty, extended warranty available



SolarPTL
CERTIFIED
ANSI/UL 2703
(2015.01)
Sections:
13, 17, 18, 22

BARNRACK 2.0

Pitched Roof Mounting System



TECHNICAL

SPECIFICATIONS

Distribution Load	1.5 - 3 lbs/ft ²
Inclinations	Flush
Wind Speed	Up to 190mph
Material	6000 series aluminum
Module Type	All standard size framed PV modules
Wire Management	Built into KB10 Rail
Orientation	Landscape and Portrait
Rail Length	10', 20'
Configurations	Shared-Rail, Fully-Railed
Roof Pitch	0° - 45°
Roof Type	All corrugated metal roofs
Grounding Method	ETL certified KB Konnect clamps
Module Spacing	Customizable based on project requirements
Roof Clearance	Up to 8" (Bottom of module to roof)
Span Lengths	Dependent on project location, 3'- 8'



Fully-Railed
Two Rails per row of modules



Shared-Rail
Rails shared between modules

MADE IN AMERICA



MADE IN CANADA

www.kbracking.com • 1.888.661.3204 • info@kbracking.com