



Intertek

KB RACKING®
Simple solutions you can count on.

AERORACK® **EAST WEST**

Flat Roof Mounting System

LIGHTWEIGHT - NON PENETRATING - EASY TO INSTALL

AERORACK EAST WEST is the latest aerodynamic rail-based mounting solution. KB Racking has refined its rail based solution with an east-west orientation, to provide customers with the same core elements of integrated wire management that allows for installers to install more panels, while saving space on the roof. With an east-west configuration, this system offers best value by reducing costs and installation time.

AERORACK EAST WEST features low ballast requirements and structural integrity, while offering customizable solutions with its flexibility in row spacing and tilt angle.



FEATURES

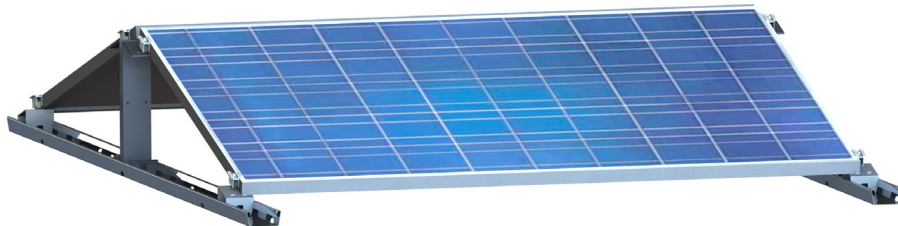
- Conforms to UL standard 2703. Certified to ULC/ORD STD C1703
- Rail based design provides stiffness, reducing ballast requirements and roof loads
- Non-penetrating design prevents damage to your roof
- Windshields include integrated press-fit nuts for a faster installation
- Aluminum components ensure long lasting performance
- Pre-attached rubber mats offer additional protection for the roof
- 25-year standard product warranty

ETL CLASSIFIED



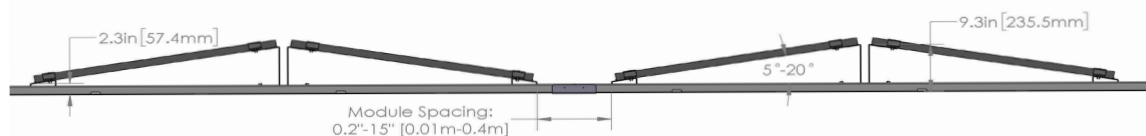
AERORACK® EAST WEST

Flat Roof Mounting System



TECHNICAL SPECIFICATIONS

Inclinations	5°, 10°, 12°, 15°, 20° (Landscape) 3°, 5° (Portrait)
Distribution Load	2- 5 lbs/ft ²
Panel Orientation	Landscape, Portrait
Panel Type	Framed PV module
Material	3000 series Aluminum
Module Spacing	0.2" - 15"/0.01m - 0.4m (Landscape/Portrait)
Roof Type	All types of flat roofs
Roof Pitch	Up to 5°
Grounding Method	Grounding once per array - ETL Certified grounding method
Building Height	Up to 60'/18.3m (higher upon request)
Ballast Weight	Dependent on wind zone and exposure category
Wind Speed	Up to 170 mph (274km/h)
Wind Tunnel Testing	Complies with ASCE 7-10, NBCC 2005, IBC 2012 & OBC 2012 standards
Certification	Conforms to UL STD 2703. Certified to ULC/ORD STD C1703



MADE IN AMERICA



MADE IN CANADA