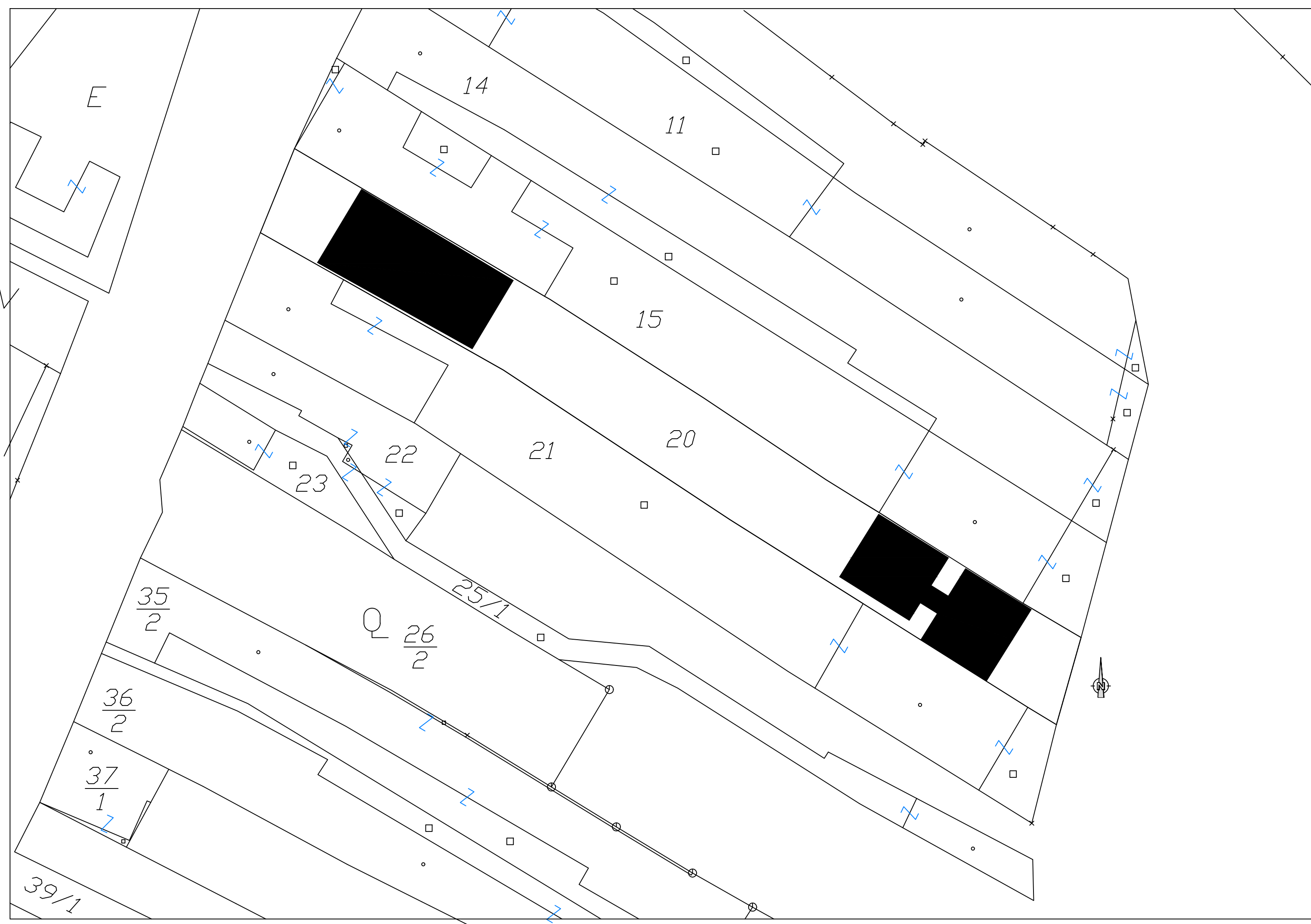
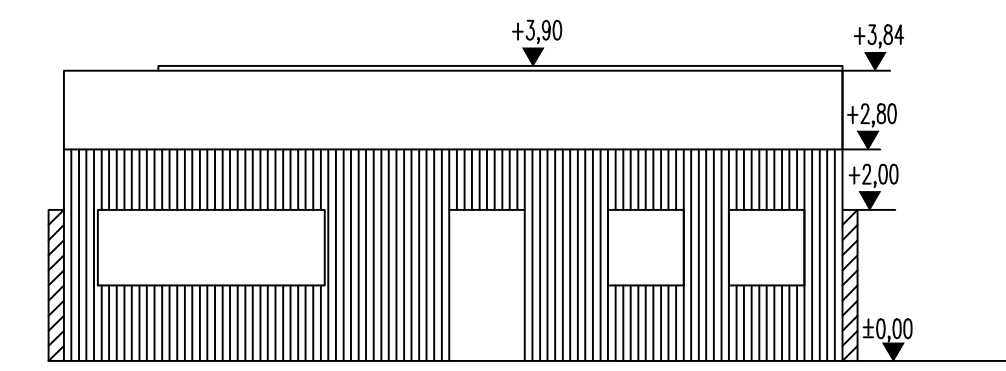


Haus zwischen zwei Mauern

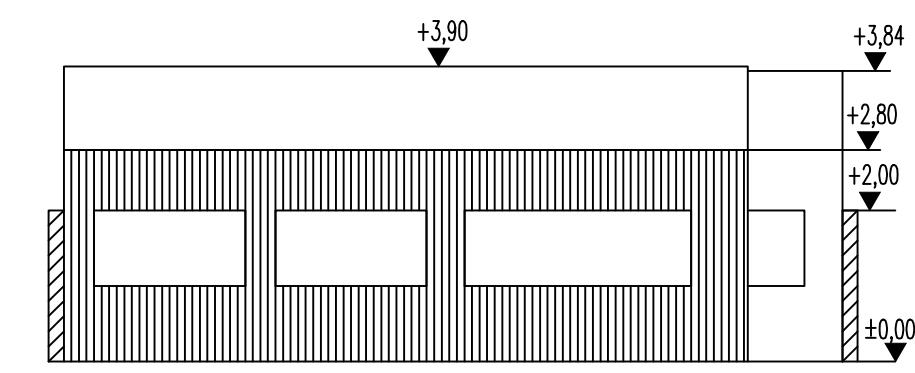
200704



EINFAMILIENHAUS

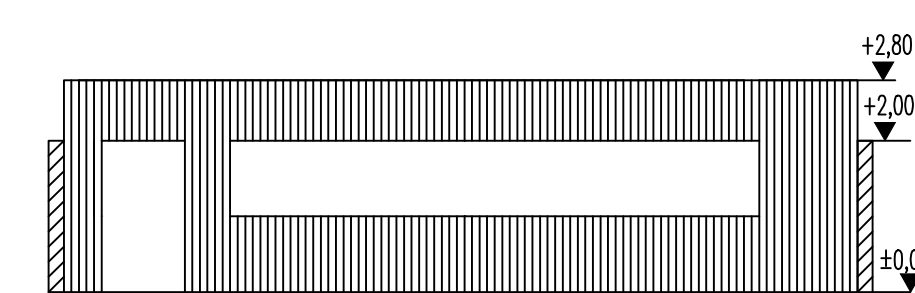


ANSICHT SÜDOST

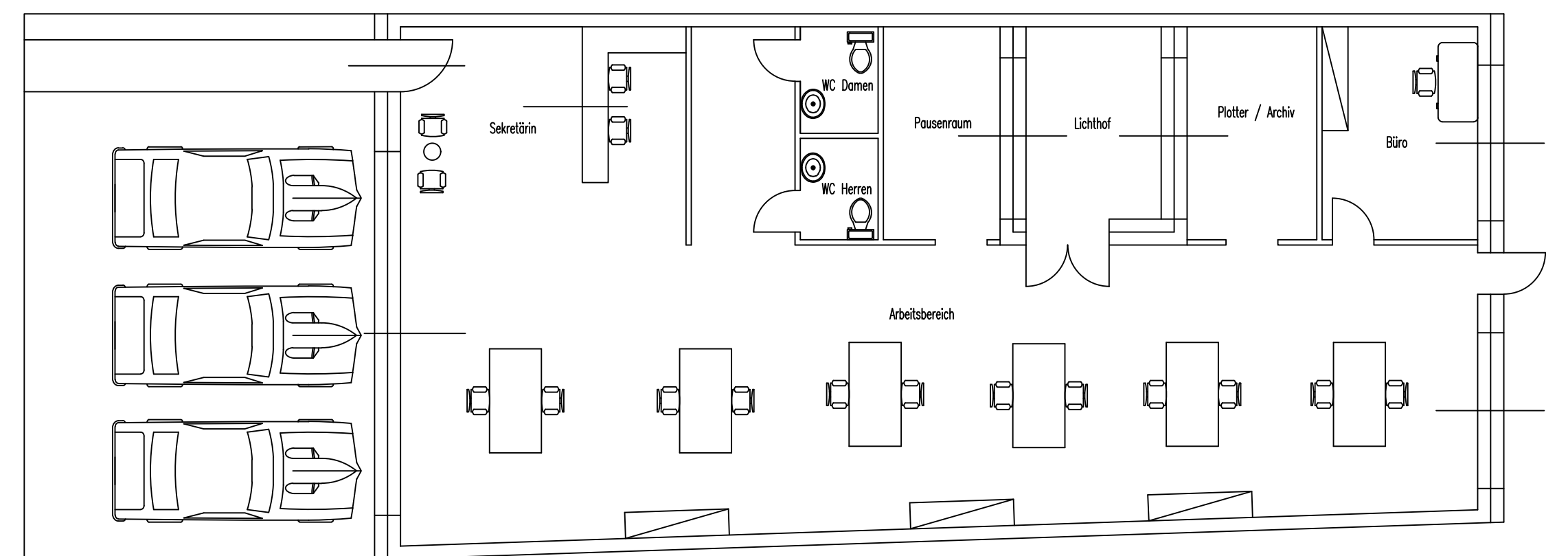
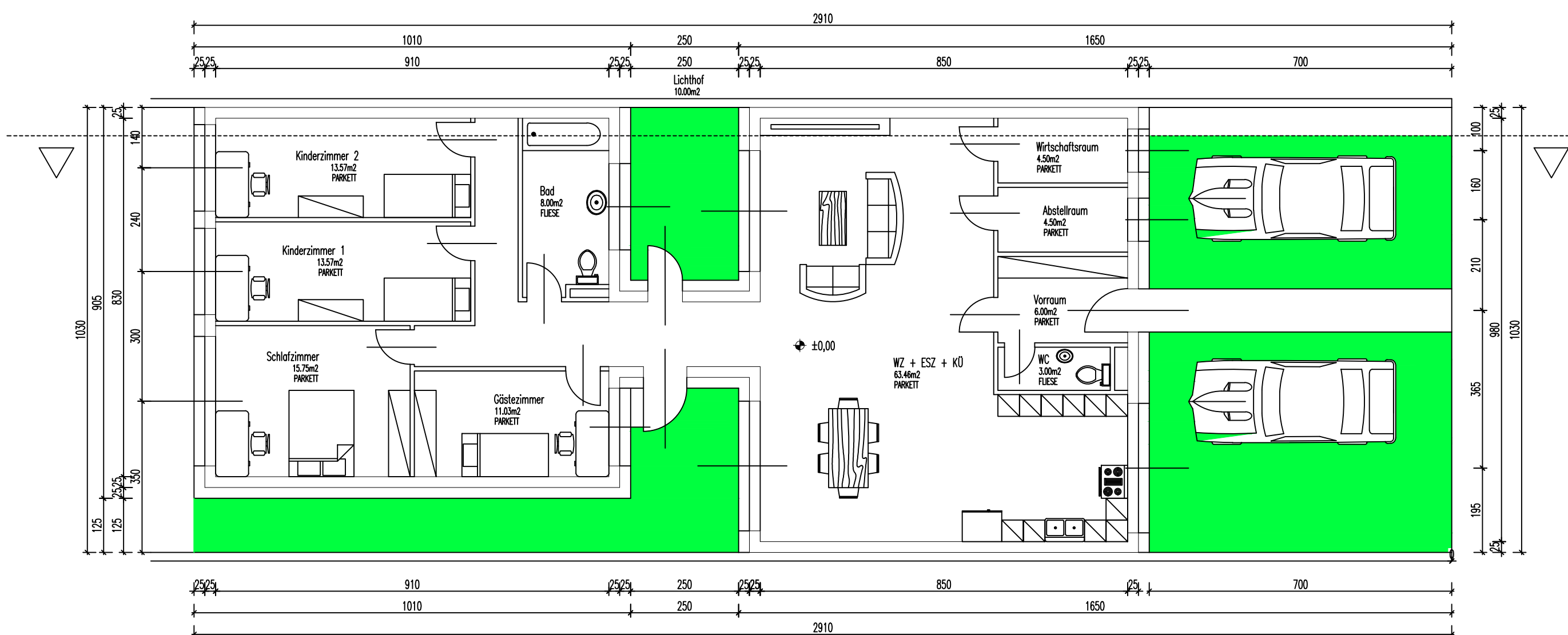


ANSICHT NORDWEST

TECHNISCHES BÜRO



ANSICHT NORDWEST

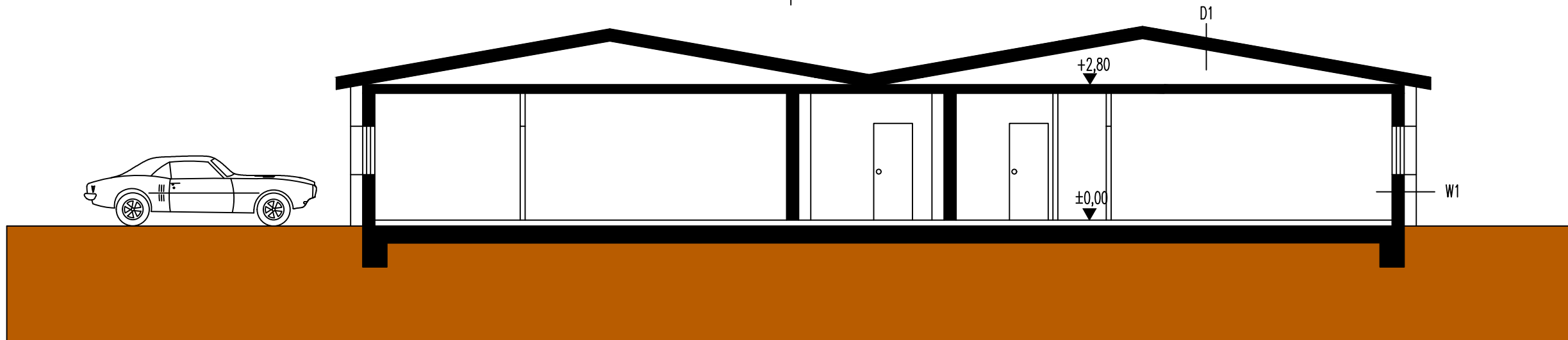


GR TECHNISCHES BÜRO

KONSTRUKTIONSAUFBAUEN

GR EINFAMILIENHAUS

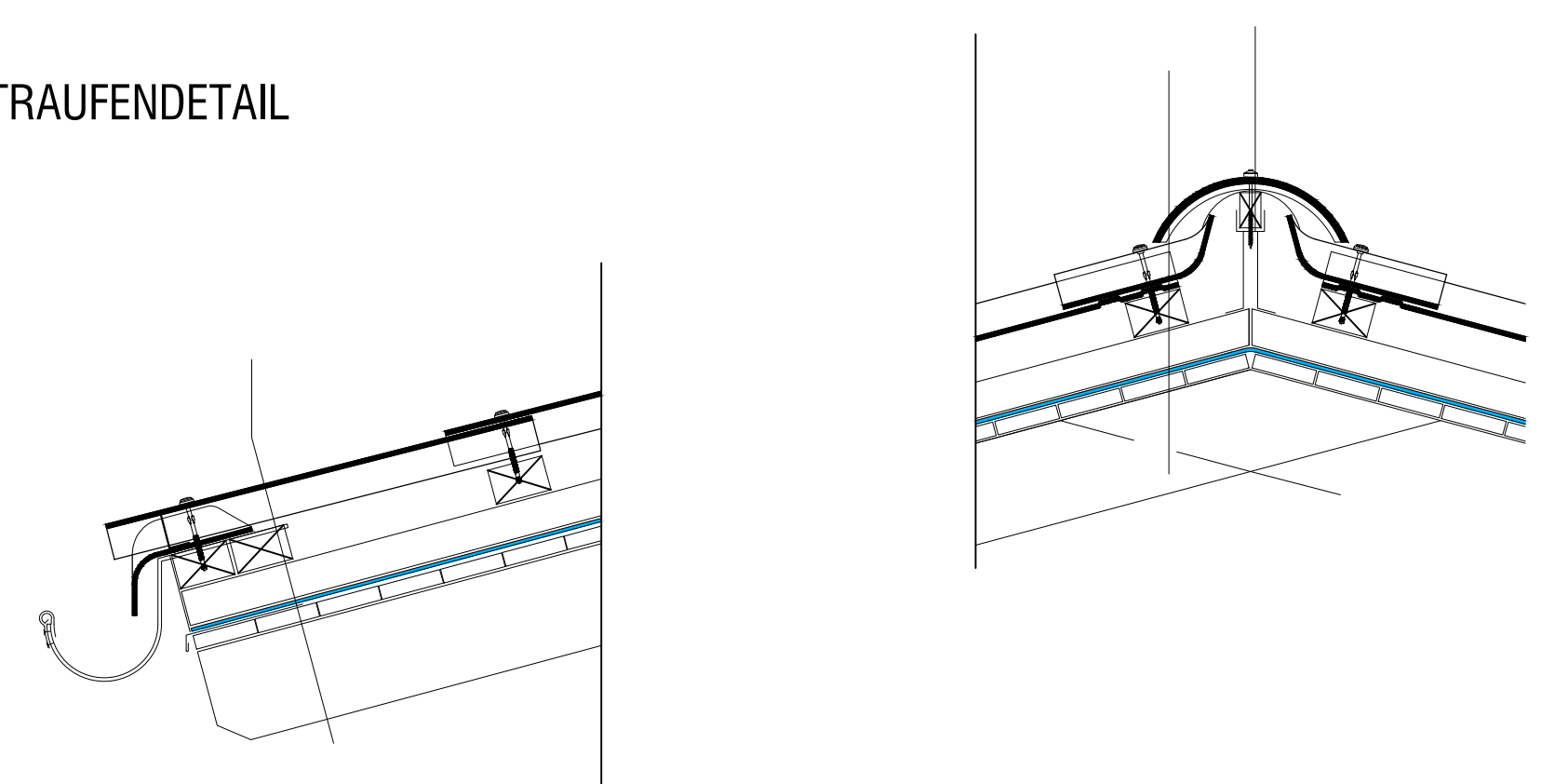
| | | | | | |
|----|-------------------|---------|----|--------------------------------|---------|
| W1 | Faserzementplatte | 0,8 cm | D1 | Struktur-Dachplatten | 3,0 cm |
| | Heißluftdämmung | 5,0 cm | | s/8 Stäbchen | 8,0 cm |
| | Wärmedämmung | 14,2 cm | | Diffusionsoffene Unterlagsbahn | |
| | Ziegelwand | 25,0 cm | | OSB-Platte | 2,4 cm |
| | Innenputz | 1,5 cm | | Sperrschicht WD | 16,0 cm |
| | | | | OSB-Platte | 2,4 cm |
| | | | | Dampfsperre | |
| | | | | Gipskarton | 1,5 cm |



SCHNITT A - A

FIRSTDETAIL

TRAUFENDETAIL



eternit®