

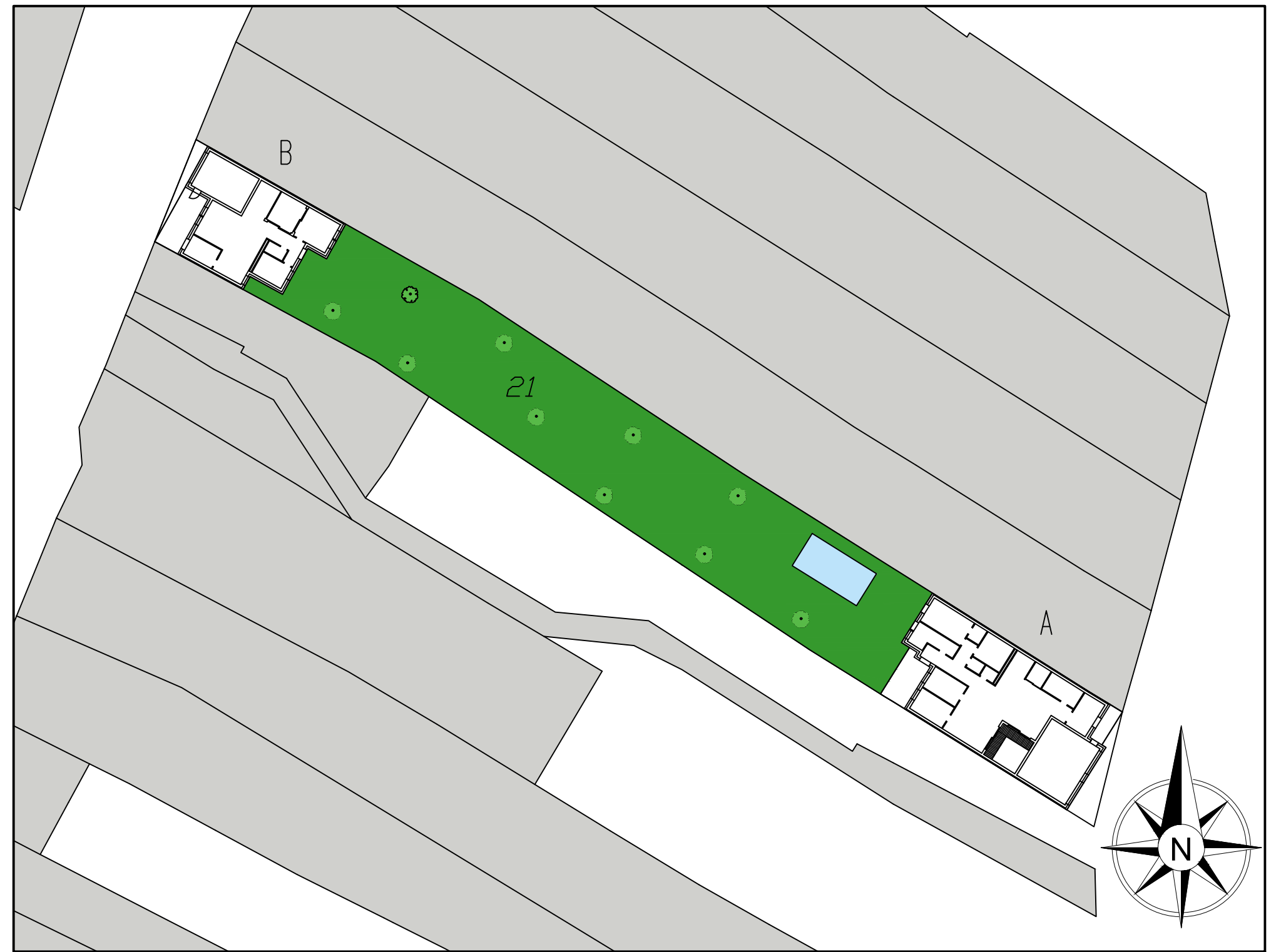
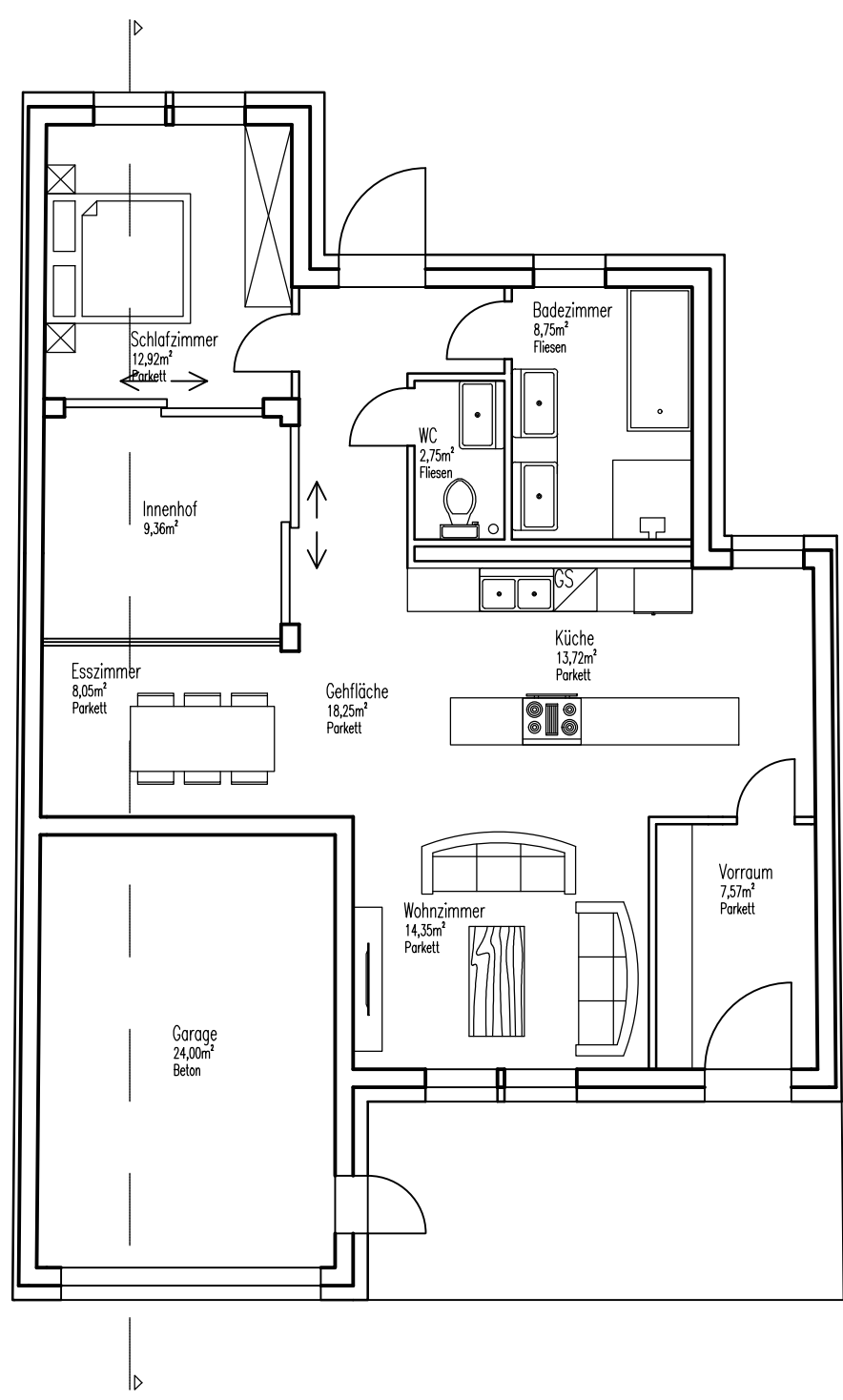
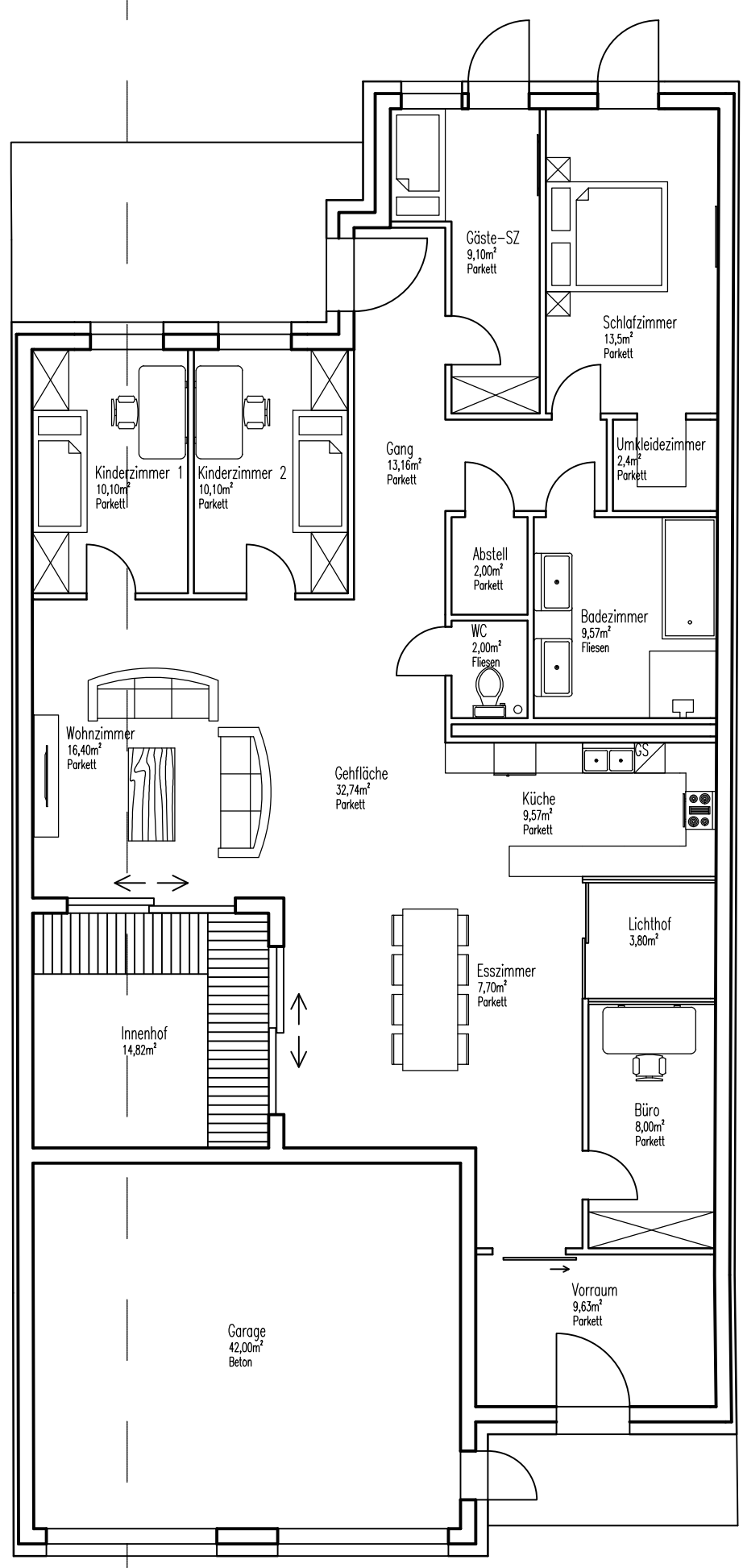
HAUS ZWISCHEN MAUERN

111021

HAUS A - EIGENES HAUS
HAUS B - HAUS DER ELTERN

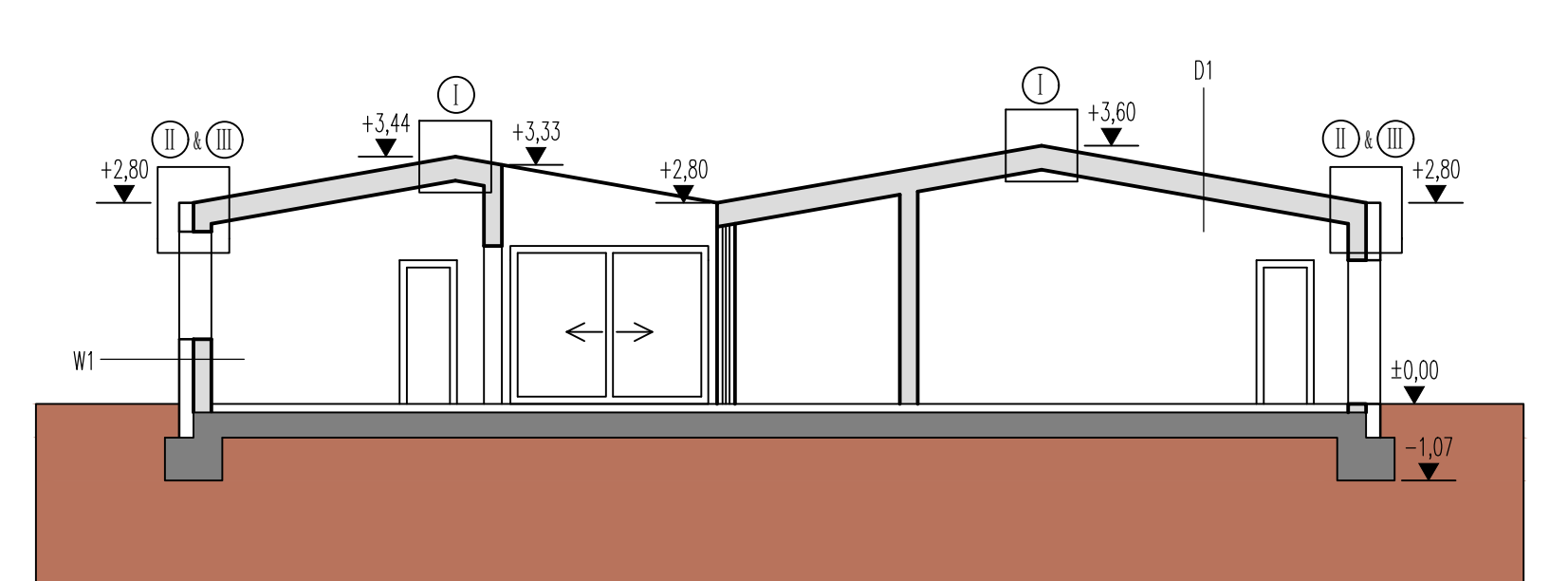
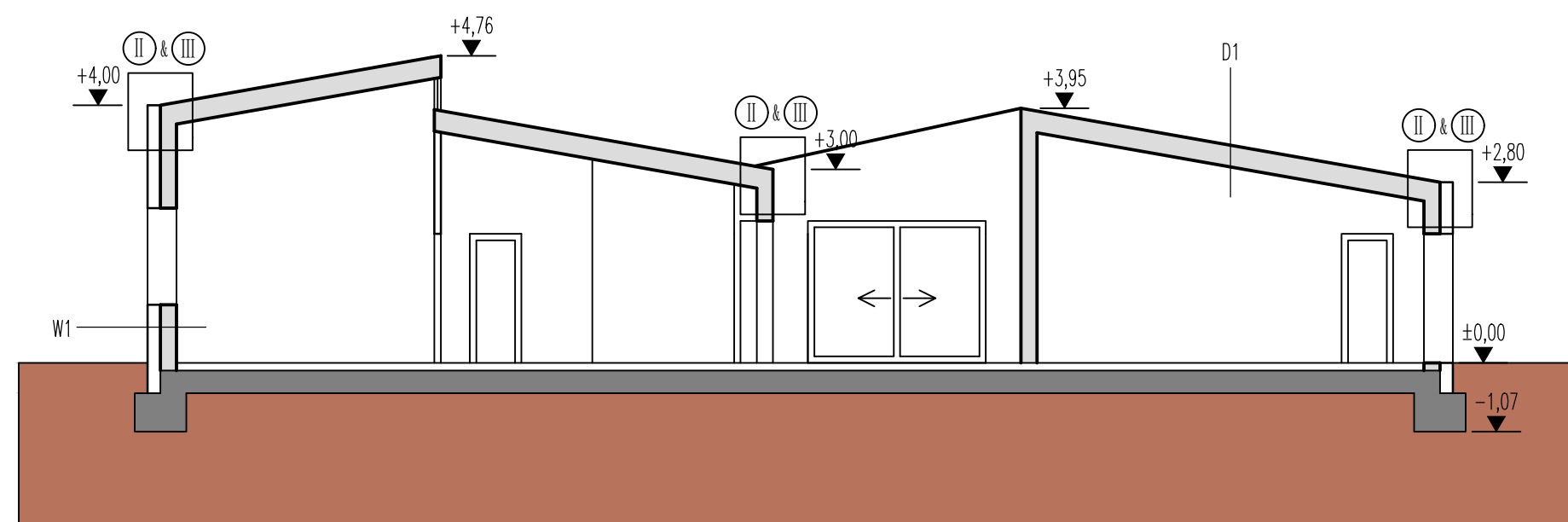
HAUS A

HAUS B



A - Schnitt

B - Schnitt

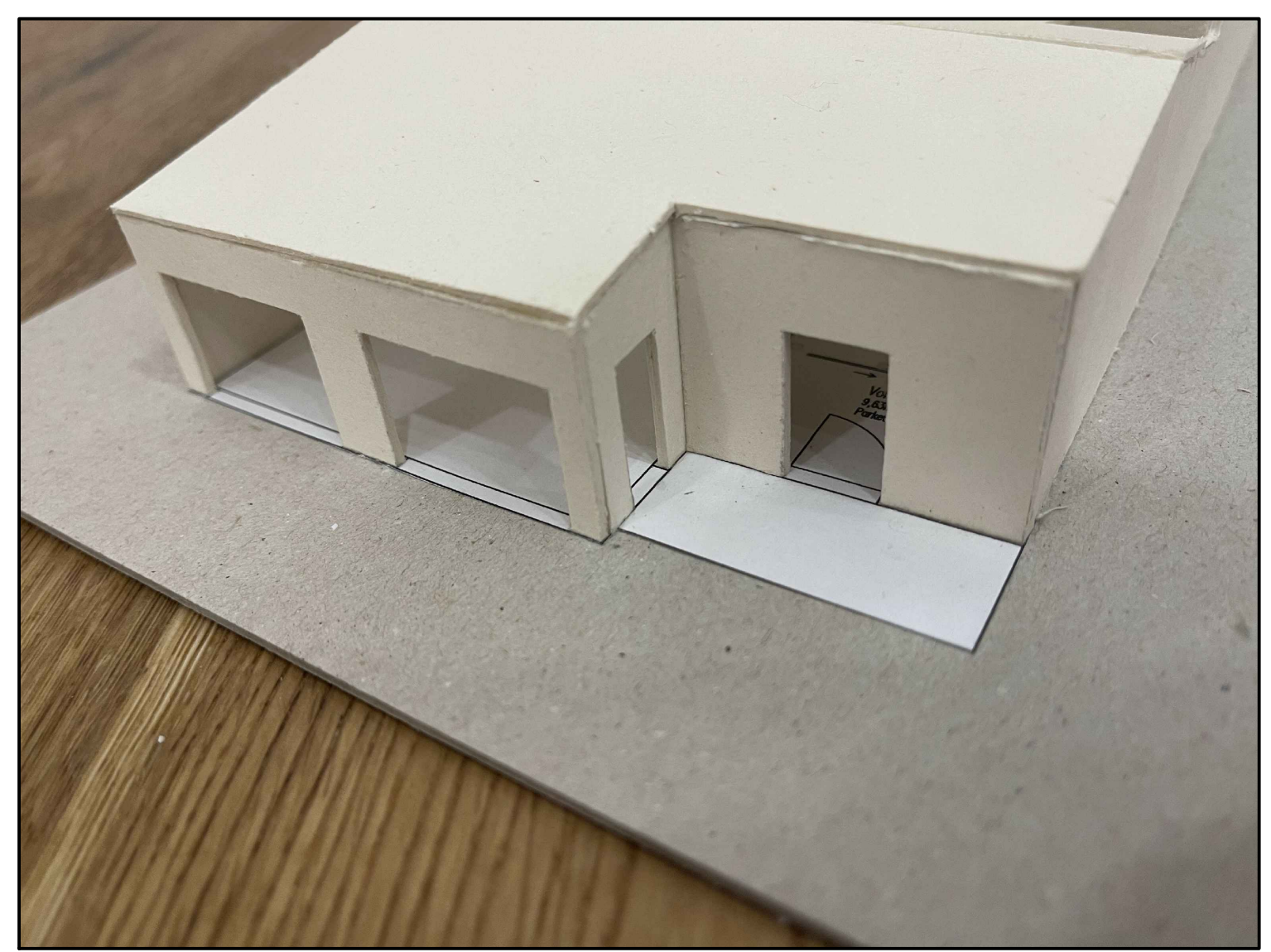
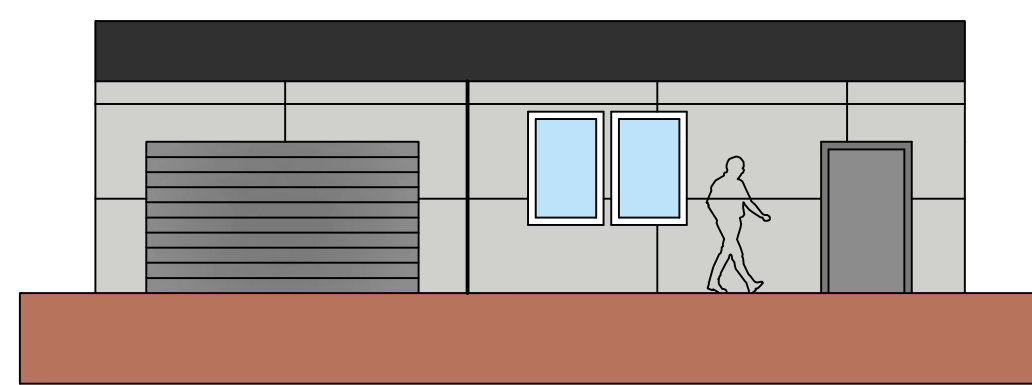
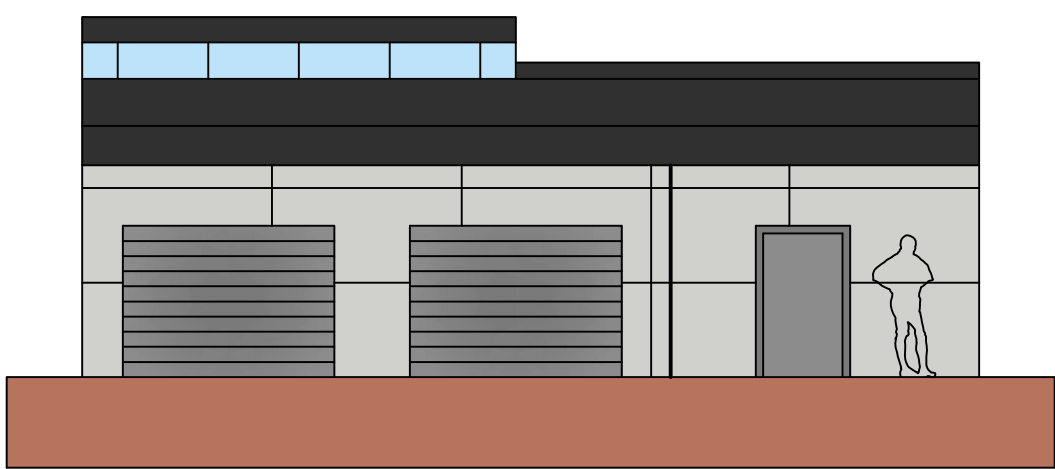


KONSTRUKTIONSAUFBAUEN

W1	D1
Vintago Faserzementplatte 0,8 cm	Structa-Dachplatten 3,0 cm
Hinterlüftung 5,0 cm	5/8 Stabfl. 8,0 cm
Wärmedämmung 14,2 cm	Diffusionsoffene Unterlagsbahn
Ziegelwand 25,0 cm	OSB-Platte 2,4 cm
Innenputz 1,5 cm	Sparren bzw. WD 16,0 cm
	OSB-Platte 2,4 cm
	Dampfsperre
	Gipskarton 1,5 cm

A - Ansicht

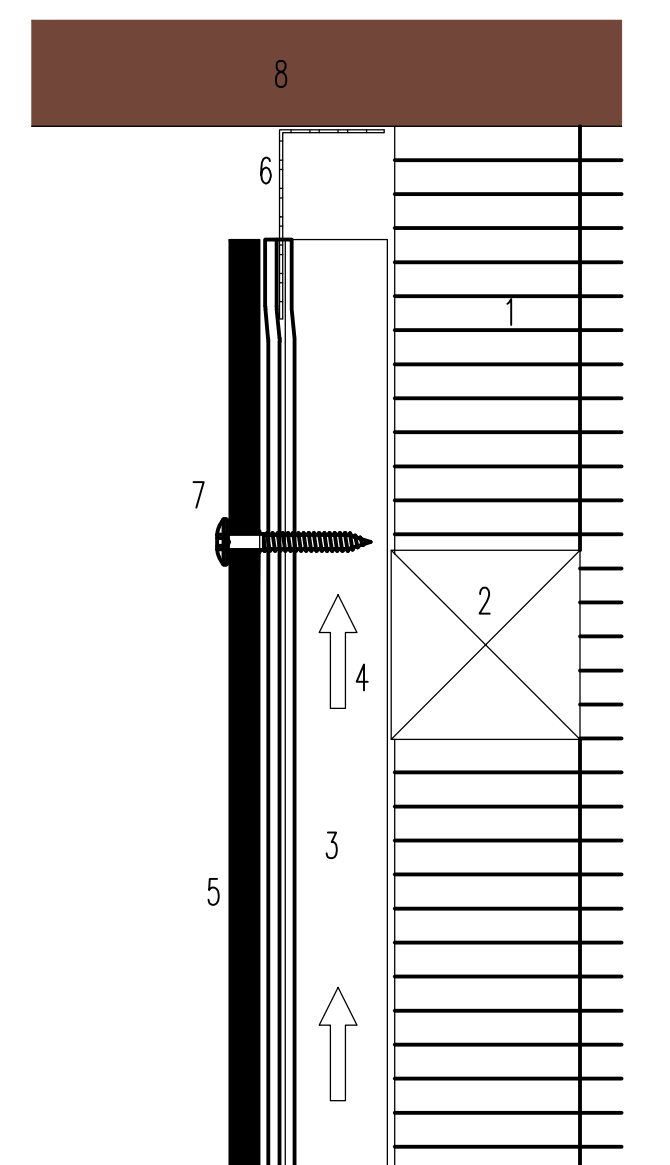
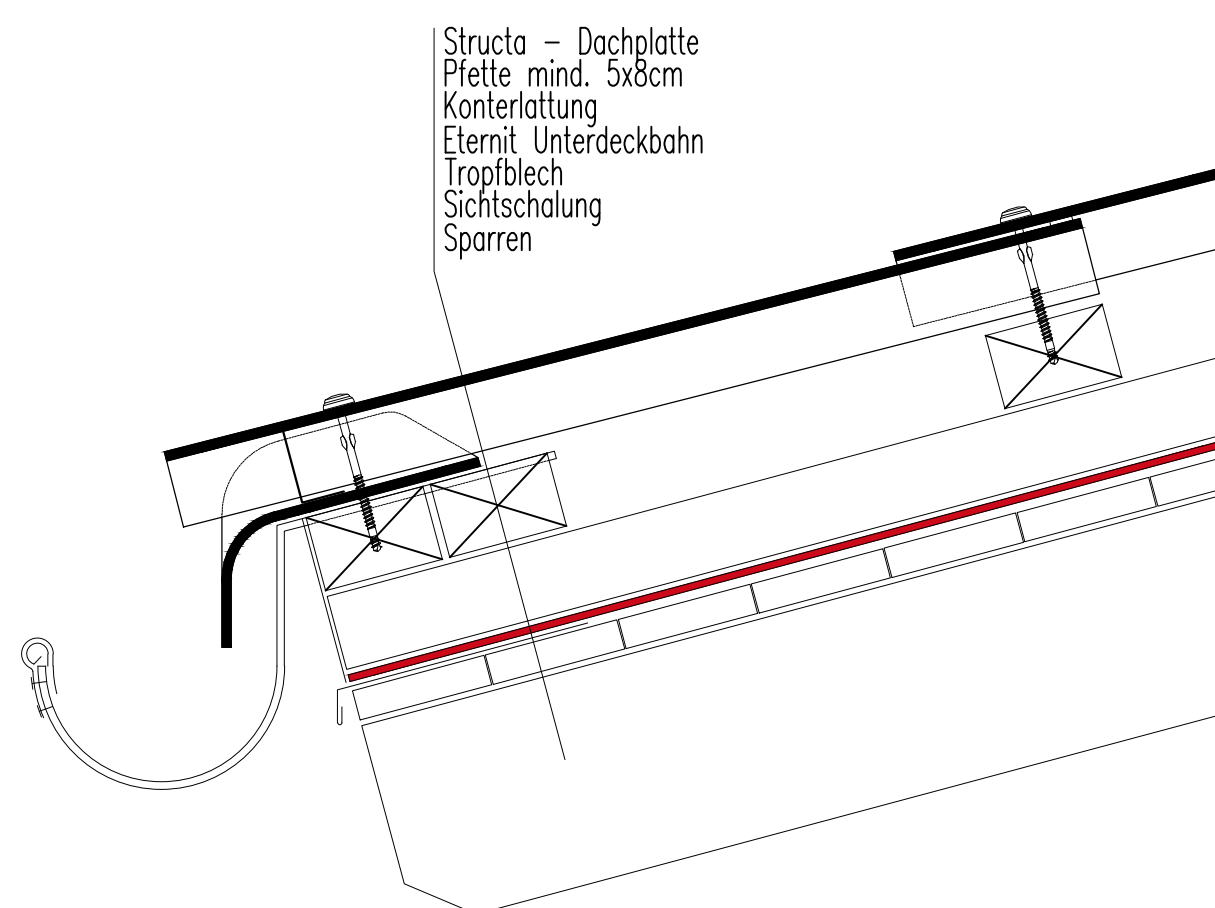
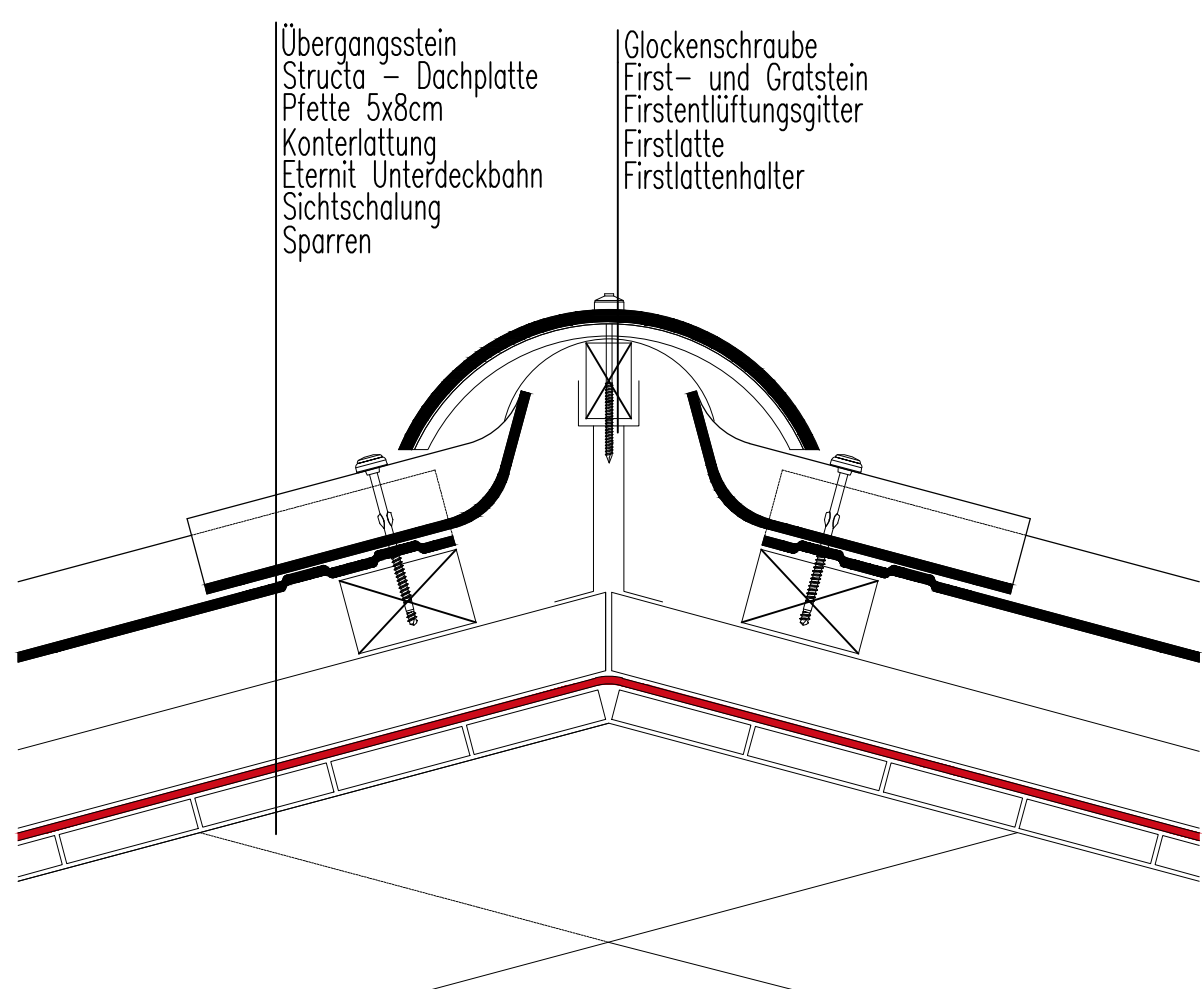
B - Ansicht



I - Firstdetail

II - Traufendetail

III - Fassadendetail



- 1 Wärmedämmung
- 2 Tragprofil horizontal
- 3 Tragplatte vertikal
- 4 Hinterlüftung
- 5 Vintago - Fassadentafel
- 6 Lüftungsprofil
- 7 Fassadenschraube
- 8 Dachuntersicht