

GOIZPER

YOUR PARTNER
IN POWER TRANSMISSION

ZPGI

Servo rotary tables

ZPGI 400 - 600 - 800 - 900 - 1100 - 1200 - 1400 - 1660 - 2400 - 3400



GOIZPER INDUSTRIAL IS ONE OF THE LEADING TECHNOLOGICAL COMPANIES OFFERING GLOBAL SOLUTIONS IN POWER TRANSMISSION

Index Rotary Tables, Roller cams and Barrell cam indexers, Brakes, Clutches, Clutch-brakes, Gear Boxes, etc.

Goizper **designs, manufactures and markets** customised power transmission and solutions to meet different market needs in sectors and applications like metal forming, **automotive**, aeronautics, **packaging**, **automation**, construction, marine, machine tools, etc.

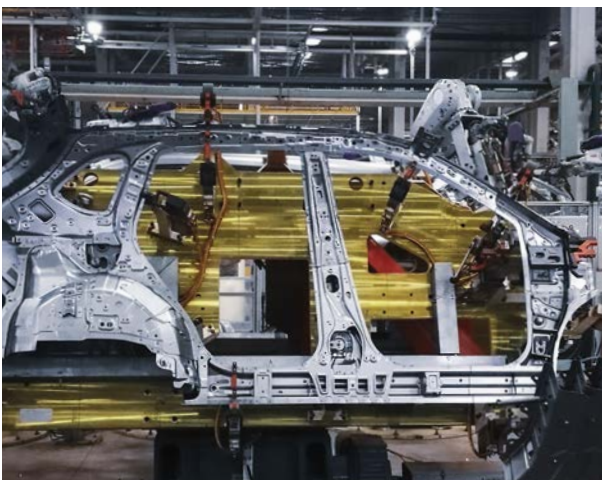
More than 60 years working alongside customers, studying the market and investigating solutions allow GOIZPER to offer the **greatest technological expertise**, which is one of its distinctive strengths.

Our aim is to **grow with customers by offering them intelligent** and global solutions for every need.

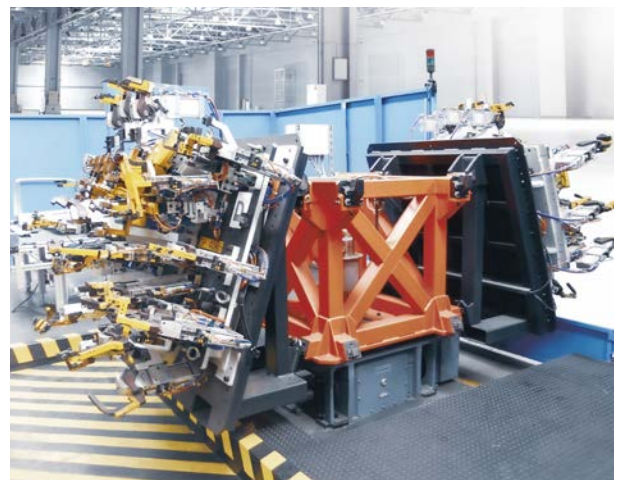
Having its own **highly qualified** production team is an important competitive advantage that gives great autonomy and **flexibility**.

Constant research, innovation and a focus on quality are the basis of GOIZPER's strategy and what makes its range of products special.

The strong investment in machinery and manufacturing programs, as well as the improvement and optimisation of its production line, ensure that Goizper equipment matches the quality that customers expect.



GOIZPER INDEXERS has its own engineering and specific software for choosing the **most suitable cam** for each application, studying the different possible **mechanical and electronic variants**, and adapting the indexers to the customer's needs.



The wide range of index units (such as flexible rotary tables, fixed stops, parallel shafts cams, oscillating globoidal indexers...) allows Goizper to fulfil customers accuracy, repeatability, and efficiency needs.

ZPGI - SERVO FLEXIBLE ROTARY TABLES

Our range of ZPGI servo indexers are ideal for heavy loads and large equipment application with zero backlash, precise positioning and flexible rotation.

Goizper ZPGI design provides characteristics as:

- > High **accuracy** and **repeatability**
- > **Flexible indexing** by servo control
- > **Servo motor** can be **chosen** by the customers
- > **Large central opening** for cable entries
- > Low working height due to **flat design**
- > **Zero backlash**
- > Cam follower position with wide radius to provide **high rigidity**
- > **Freely programmable** by servo motor control
- > **Short emergency stop** time available
- > **Easy to replace** cam rollers once installed

Application sectors:



AUTOMOTIVE

Rotary units for welding cells, Roller hemming cells, Batteries assembly...



PACKAGING

Rotary units for dispensers, Filling machines, Horizontal Form Fill Seal Machines...



ASSEMBLY

Rotary units for Automatic Assembly, Testing machines, Control & Marking machines...



PHARMACY

Rotary units for labelling, Blister Packs, Vial Treatment...



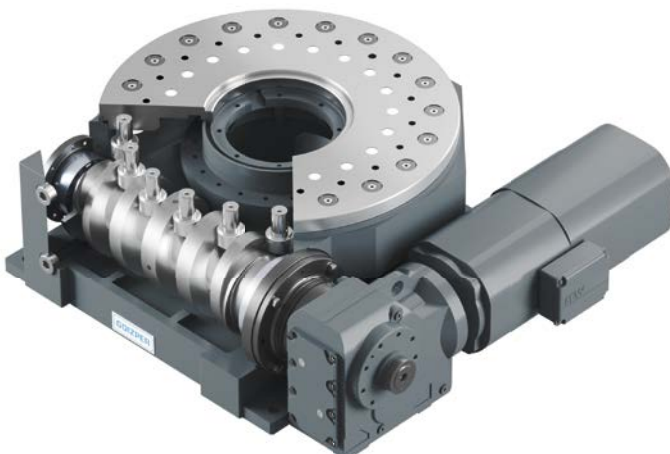
FOOD & BEVERAGE

Rotary units for food processing & treatment, Manufacturing of cans...



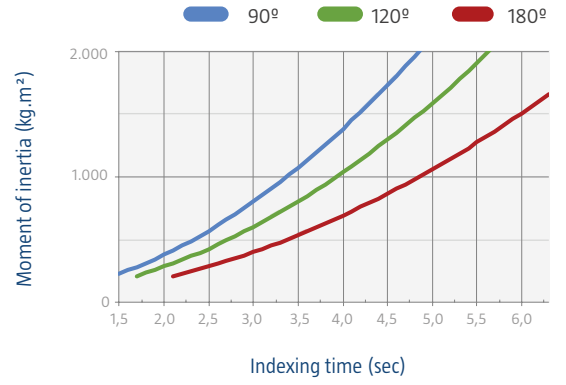
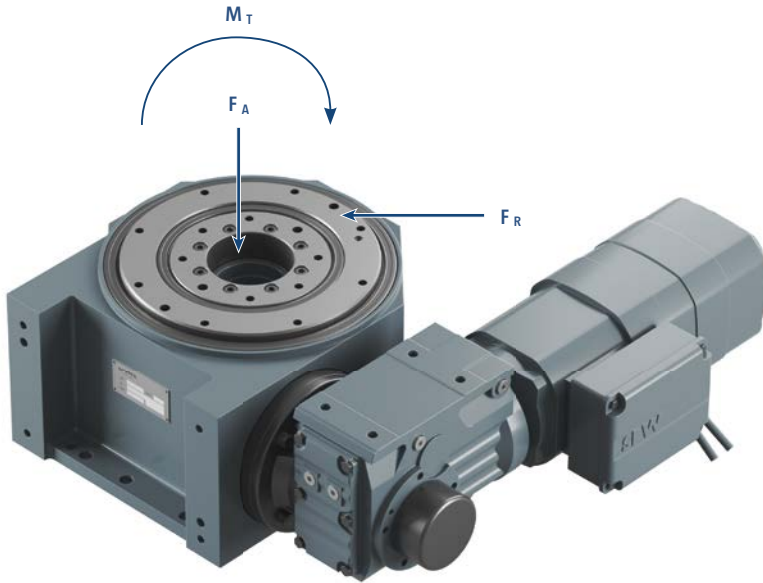
OTHER SECTORS

Aeronautic, Printing, Cosmetics, Rubber & Plastic, Paper & Carton...

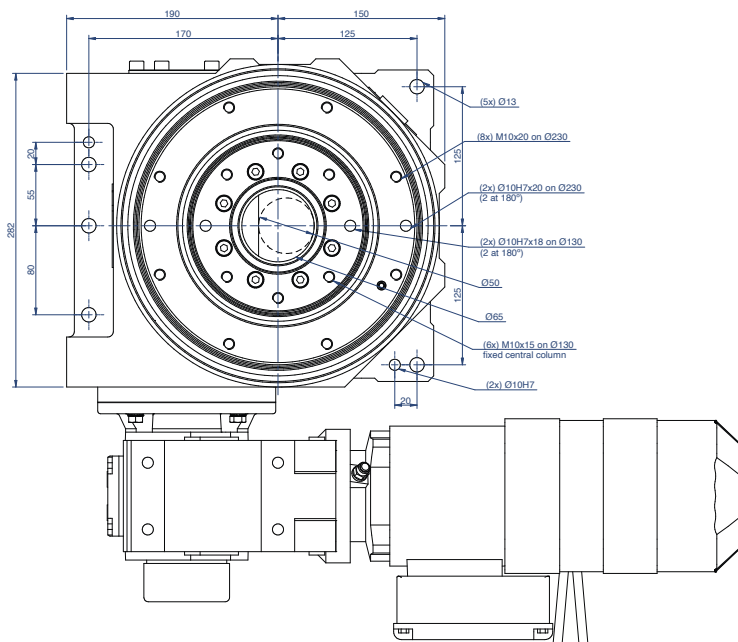
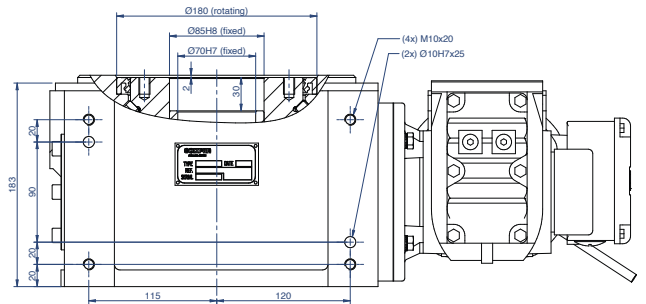
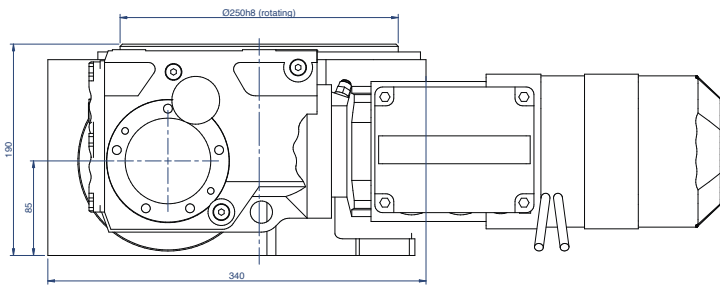


With different reducer configuration and adaptable to any servo brand: Fanuc, Siemens, Yaskawa, ABB...

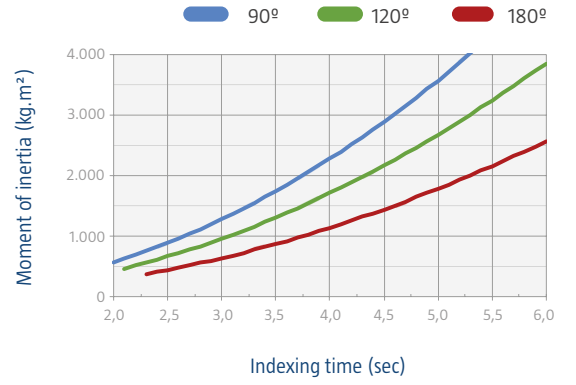
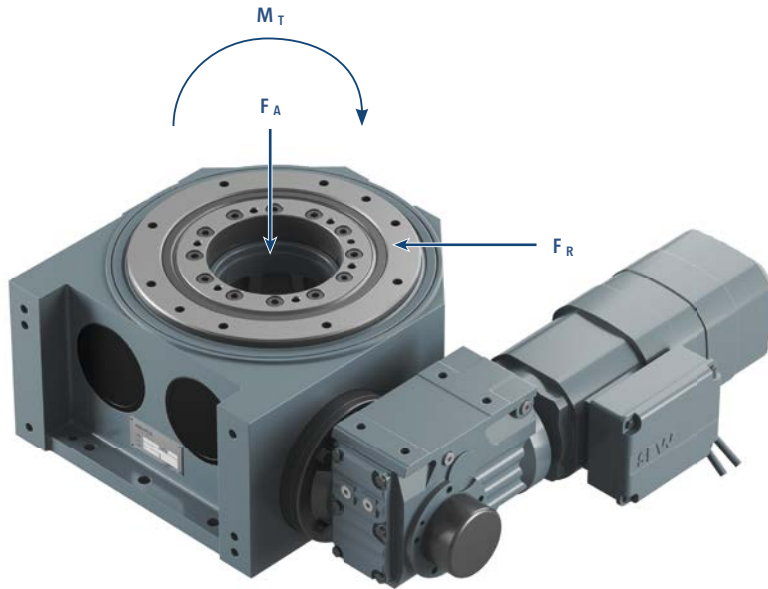
ZPGI 400B



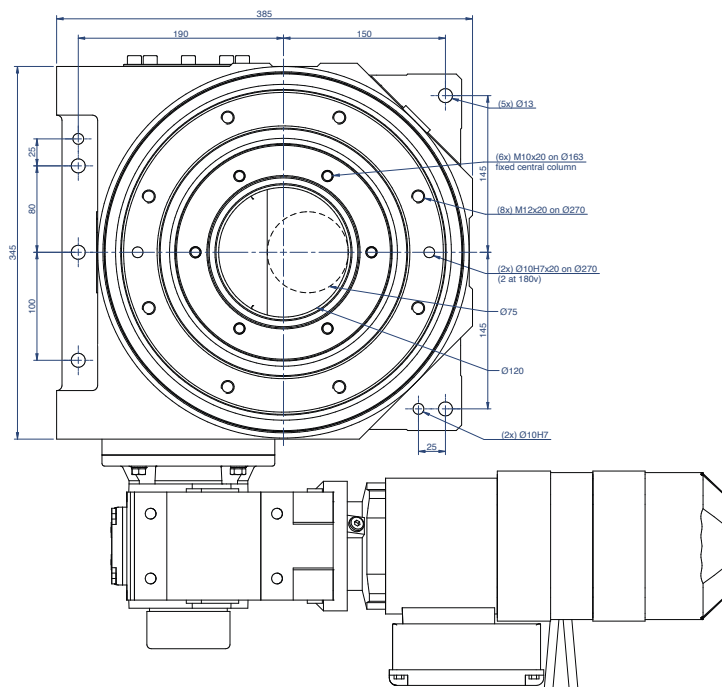
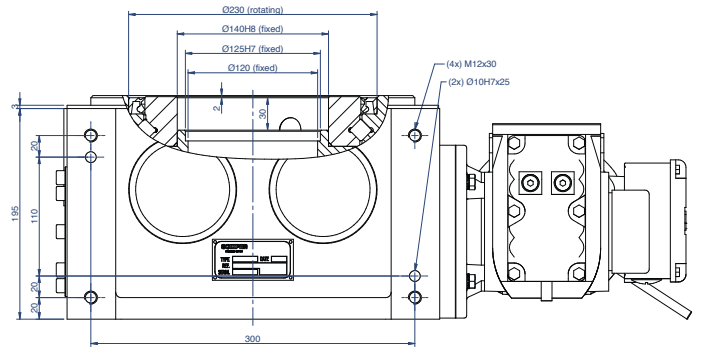
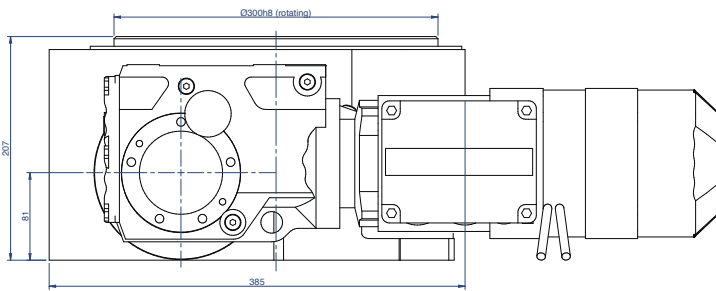
Recommended axial load (F_A)	20 kN
Recommended tilting torque (M_T)	4 kNm
Recommended radial load (F_R)	10 kN



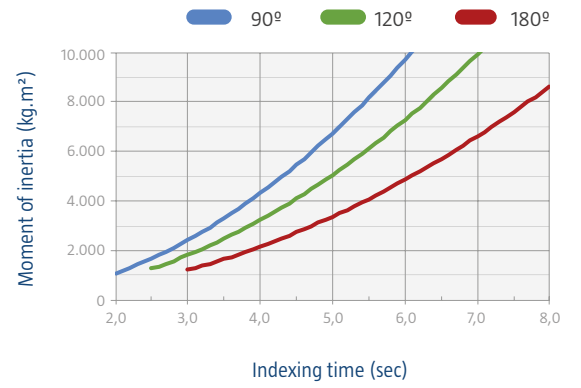
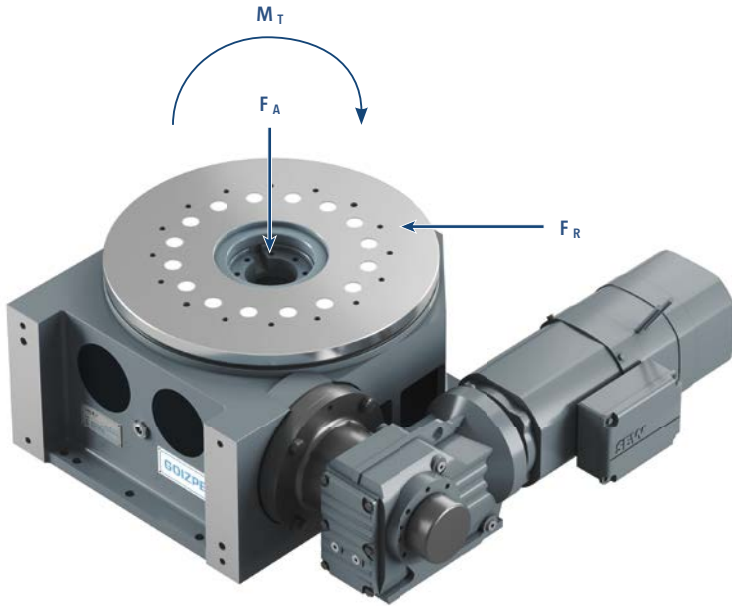
ZPGI 600B



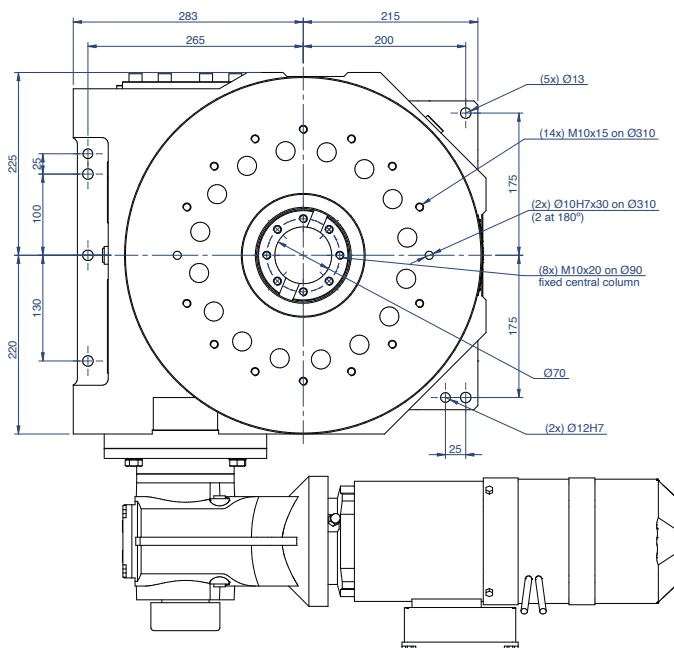
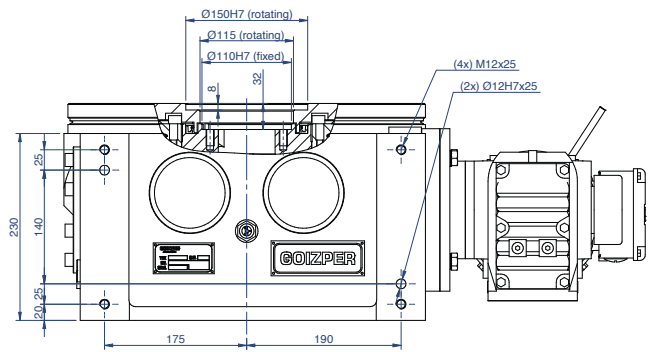
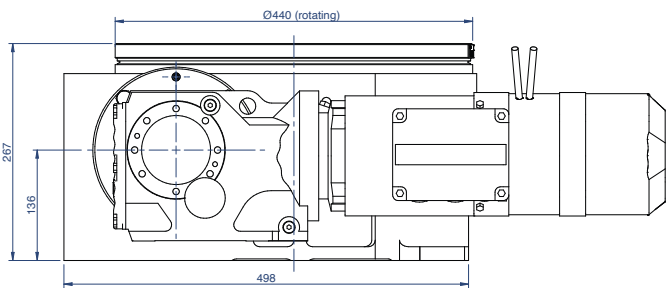
Recommended axial load (F_A)	30 kN
Recommended tilting torque (M_T)	8 kNm
Recommended radial load (F_R)	16 kN



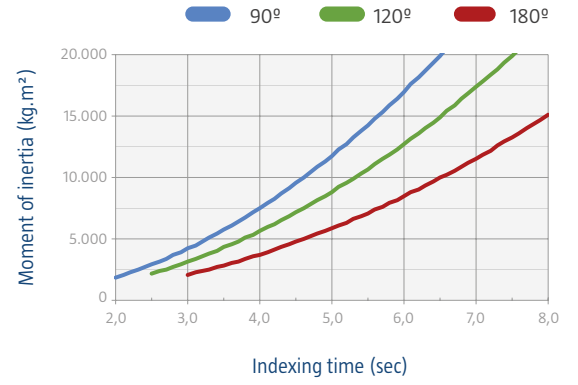
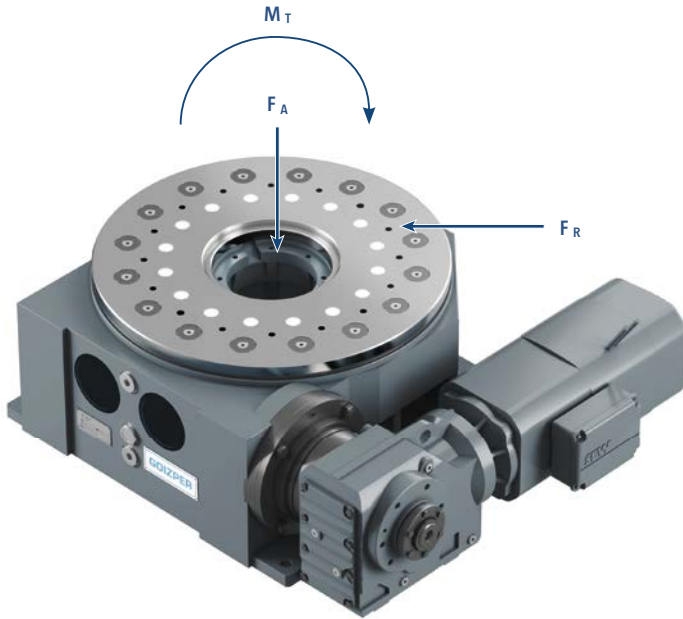
ZPGI 800B



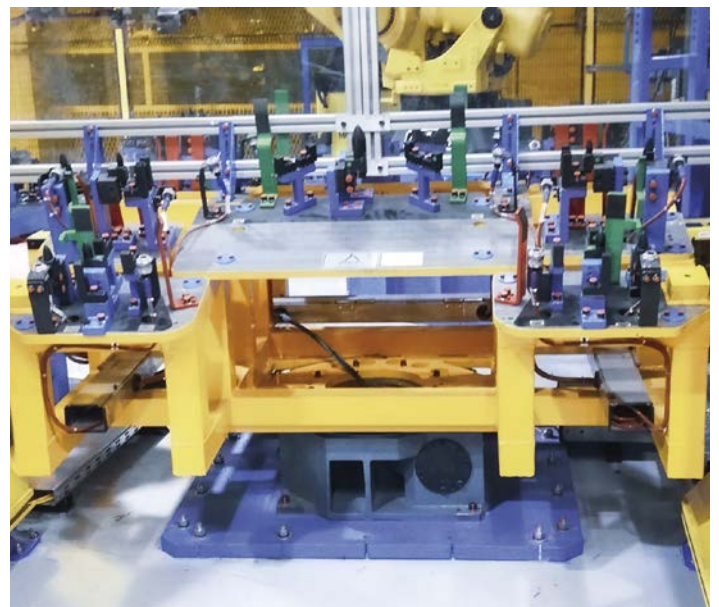
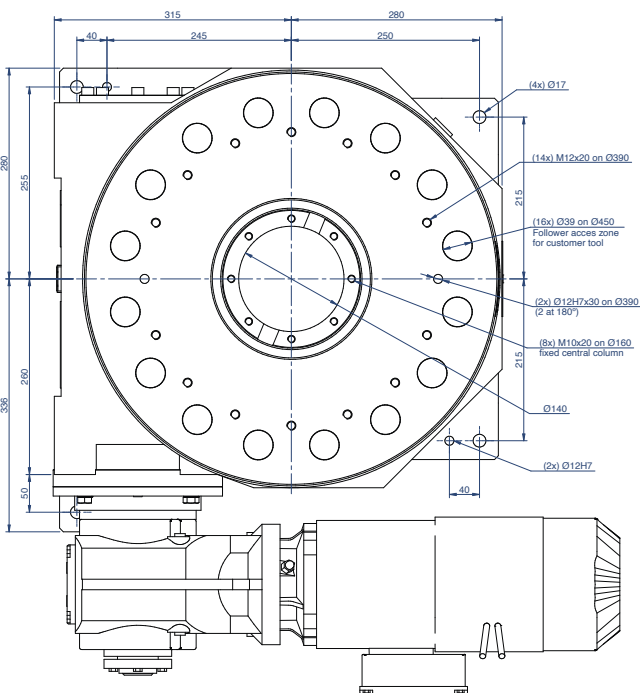
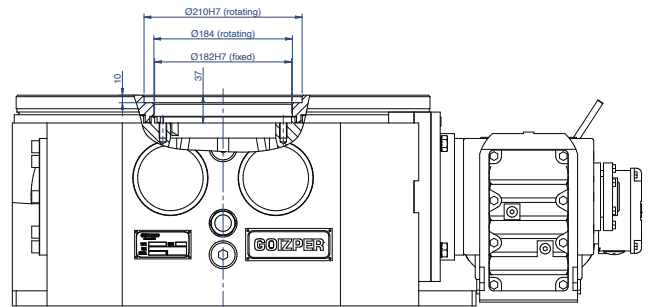
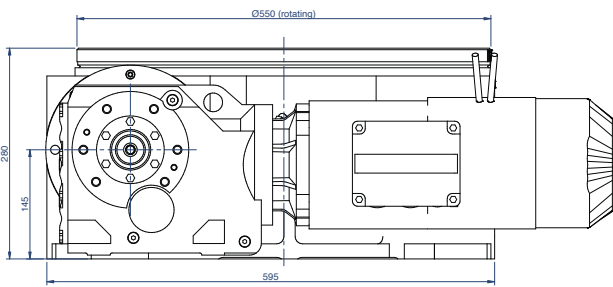
Recommended axial load (F_A)	35 kN
Recommended tilting torque (M_T)	9 kNm
Recommended radial load (F_R)	20 kN



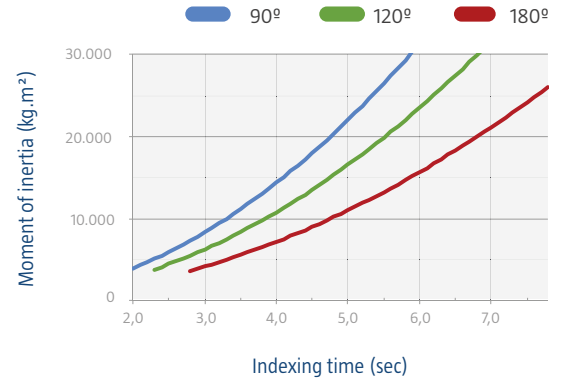
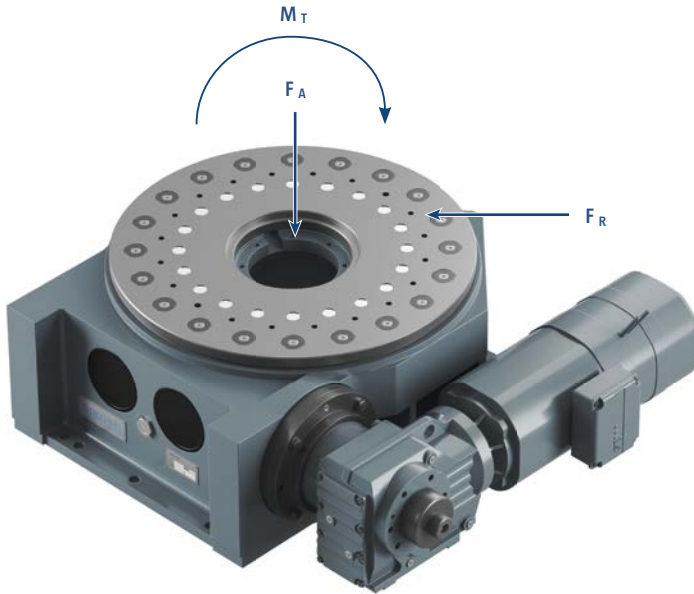
ZPGI 900B



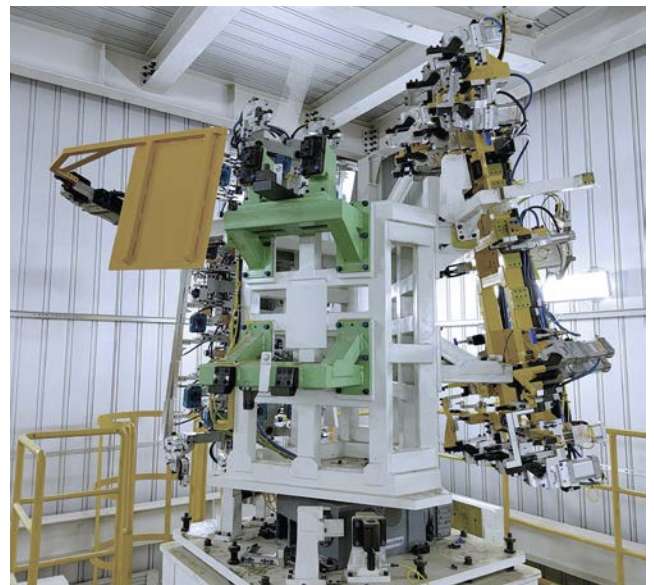
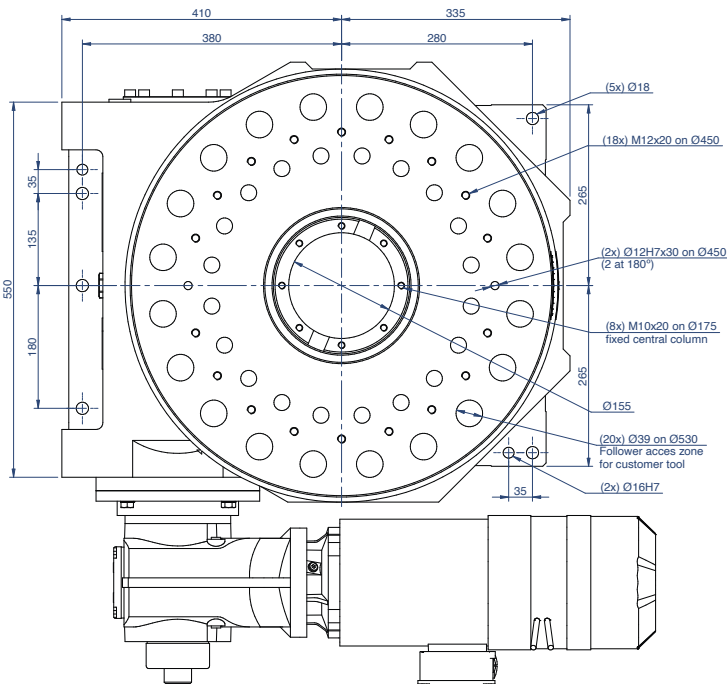
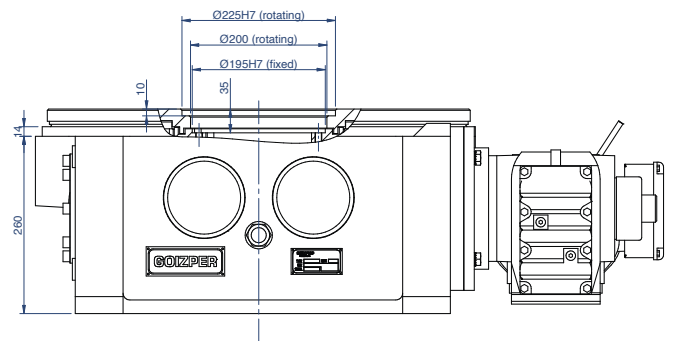
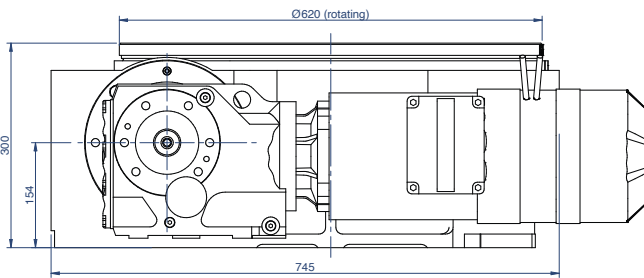
Recommended axial load (F_A)	50 kN
Recommended tilting torque (M_T)	12 kNm
Recommended radial load (F_R)	23 kN



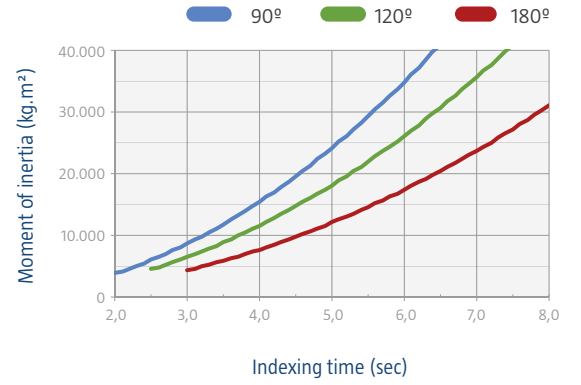
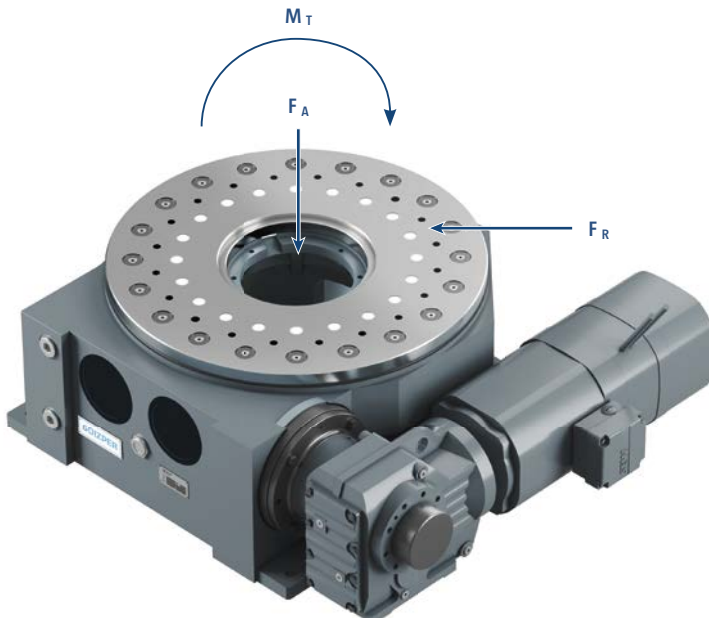
ZPGI 1100B



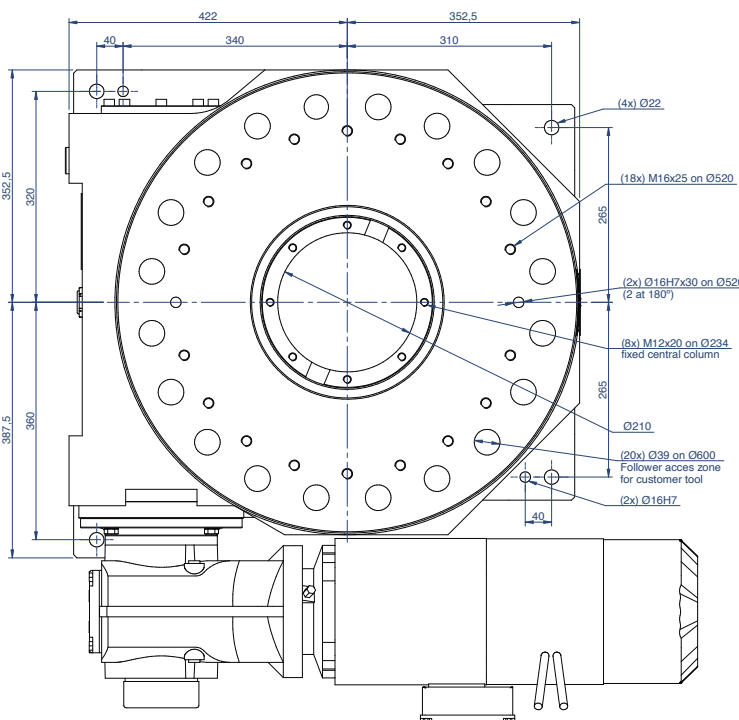
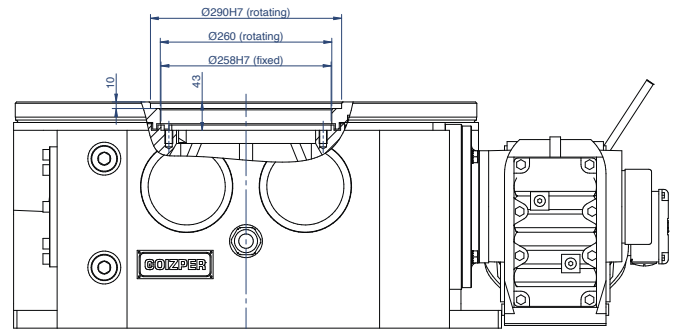
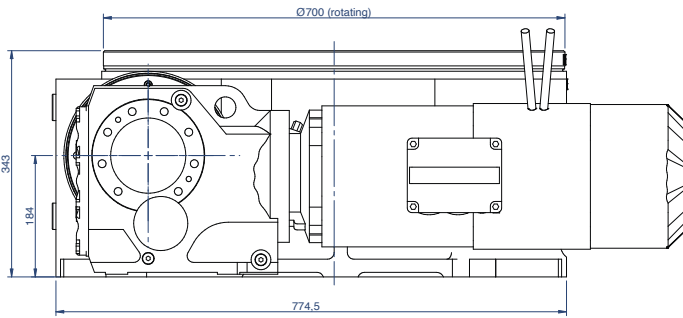
Recommended axial load (F_A)	70 kN
Recommended tilting torque (M_T)	24 kNm
Recommended radial load (F_R)	29 kN



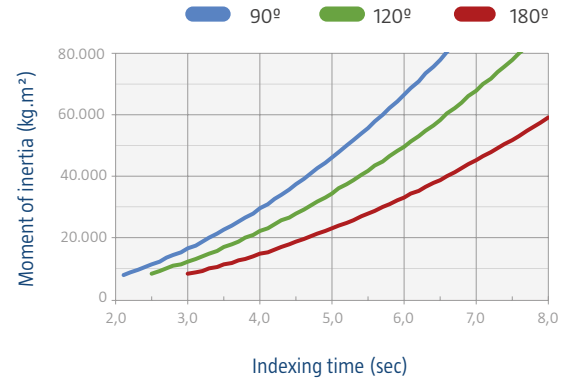
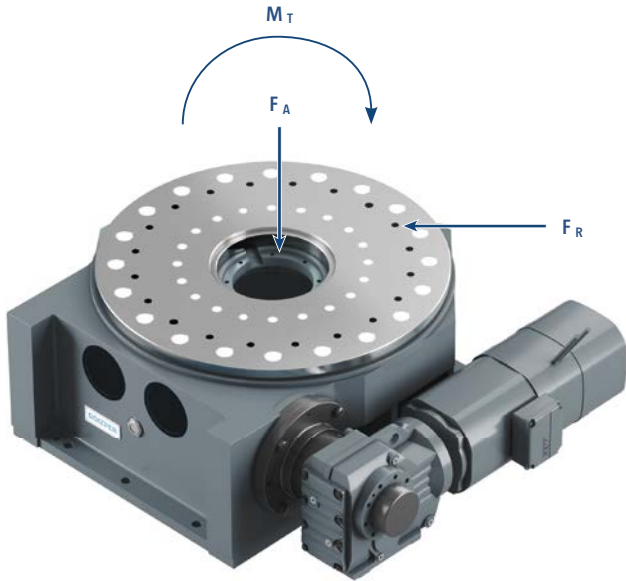
ZPGI 1200B



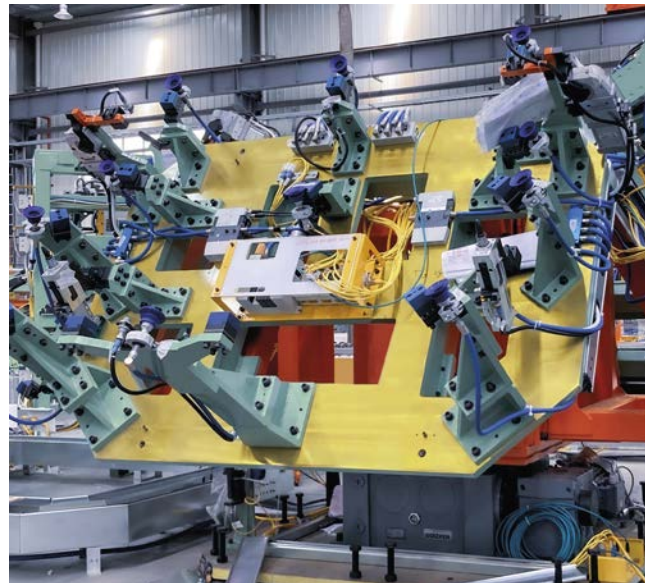
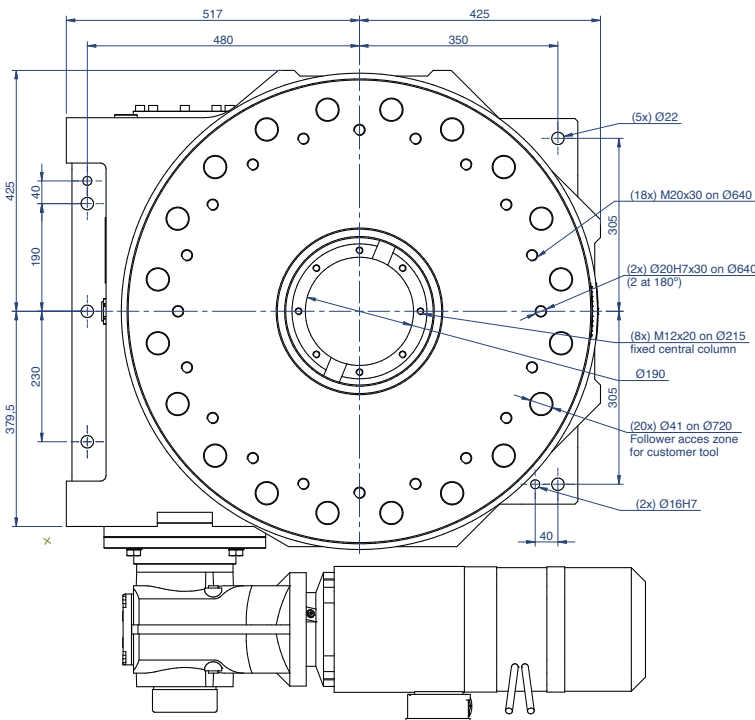
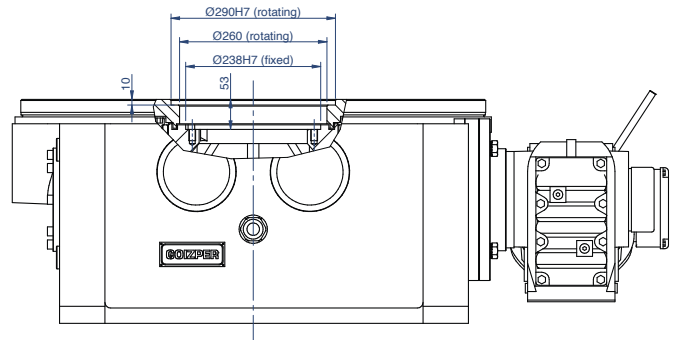
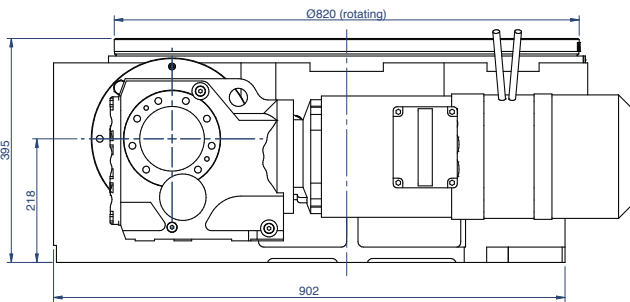
Recommended axial load (F_A)	80 kN
Recommended tilting torque (M_T)	35 kNm
Recommended radial load (F_R)	35 kN



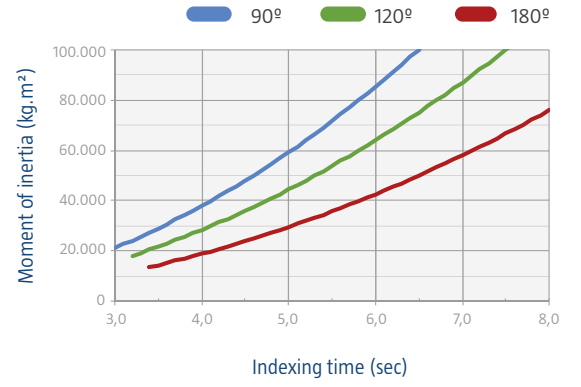
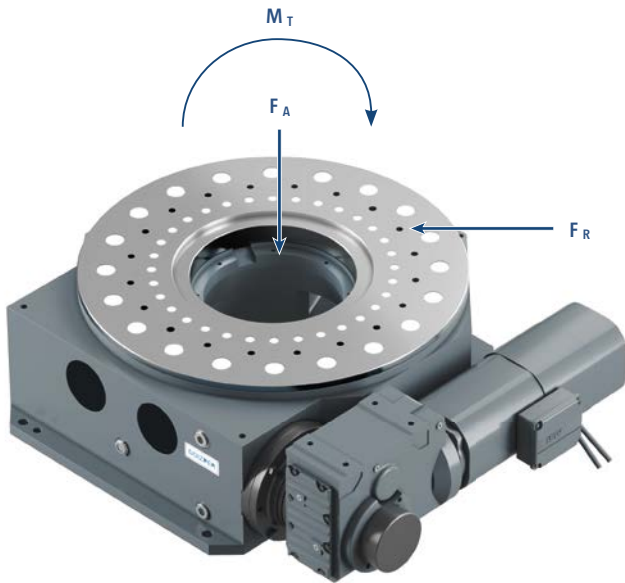
ZPGI 1400B



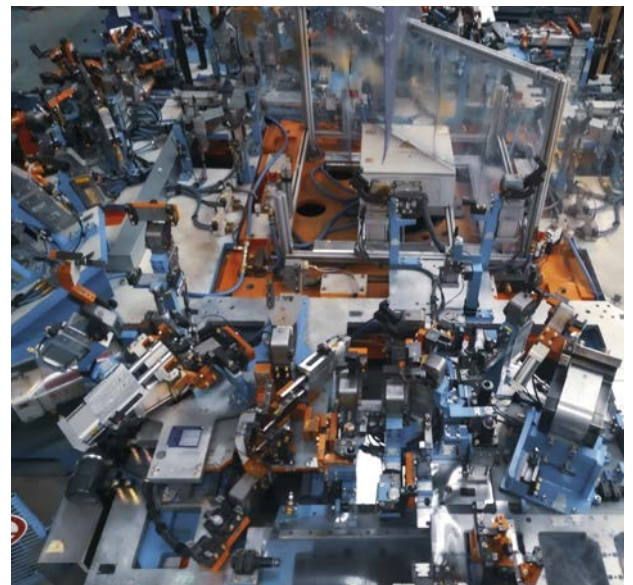
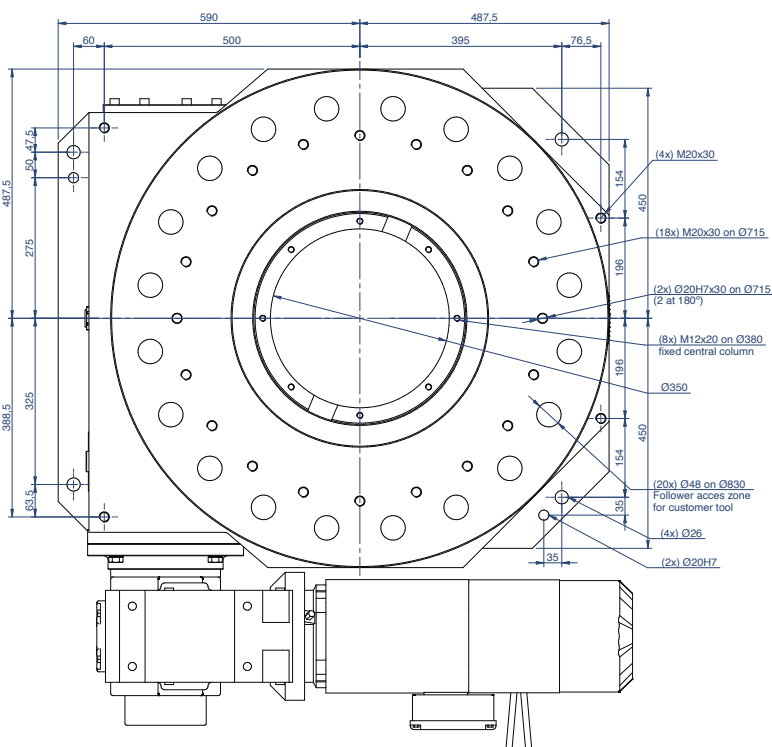
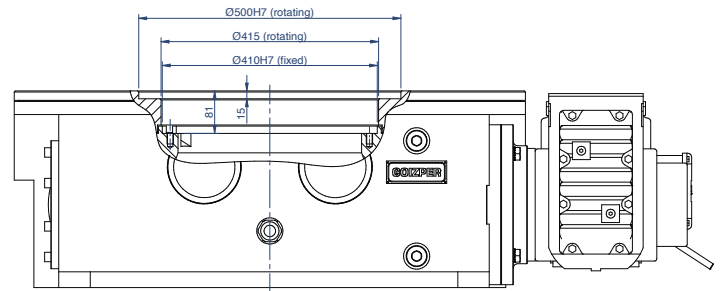
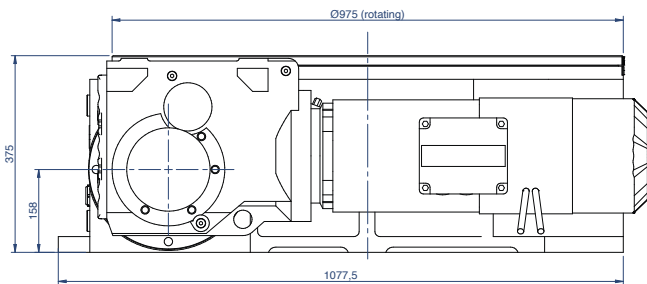
Recommended axial load (F_A)	100 kN
Recommended tilting torque (M_T)	35 kNm
Recommended radial load (F_R)	47 kN



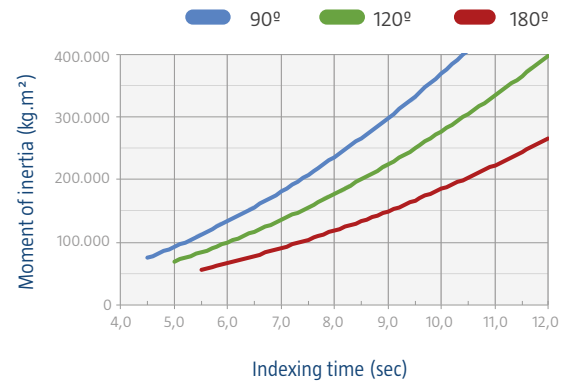
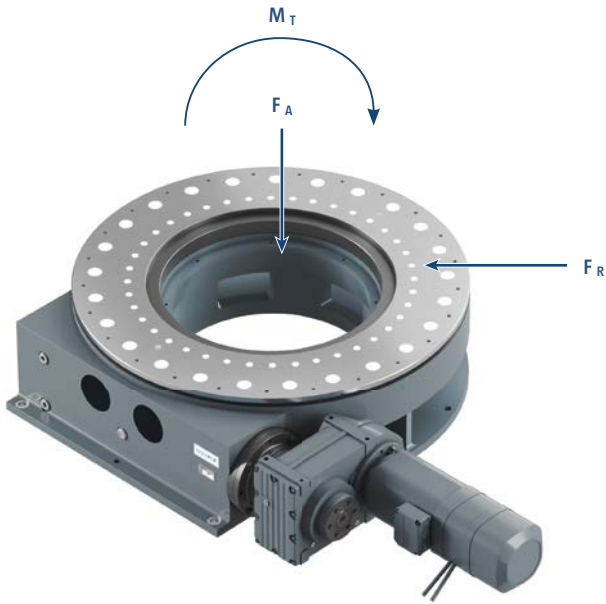
ZPGI 1660B



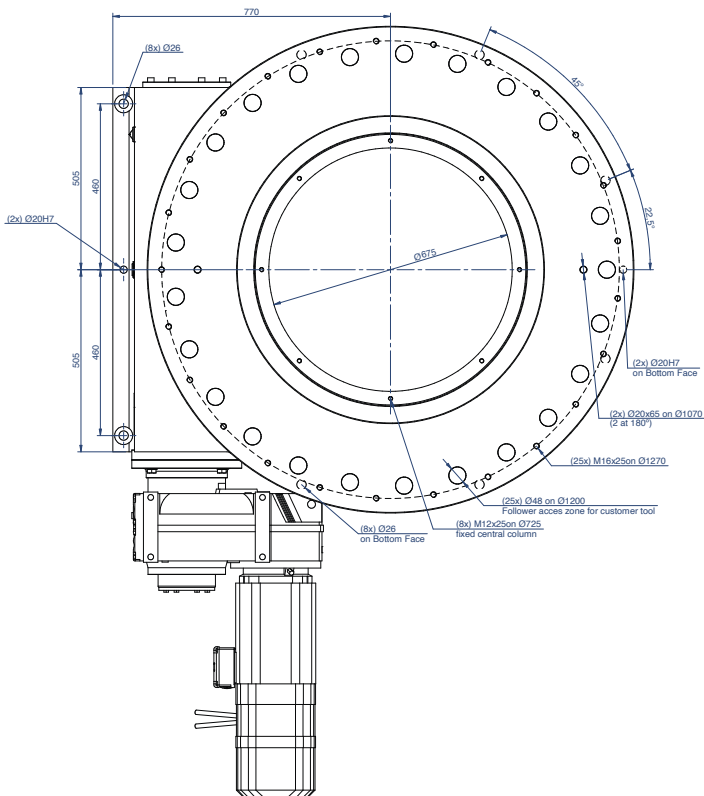
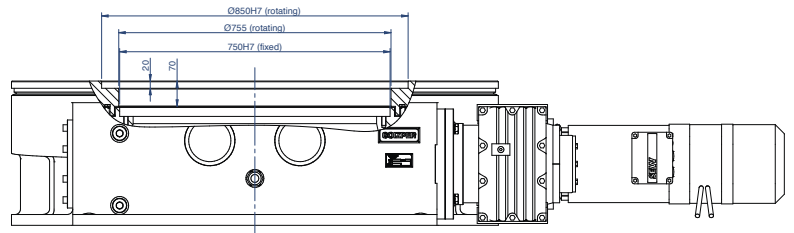
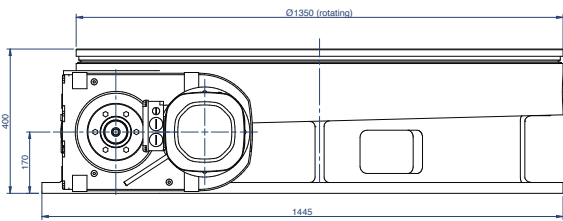
Recommended axial load (F_A)	120 kN
Recommended tilting torque (M_T)	53 kNm
Recommended radial load (F_R)	53 kN



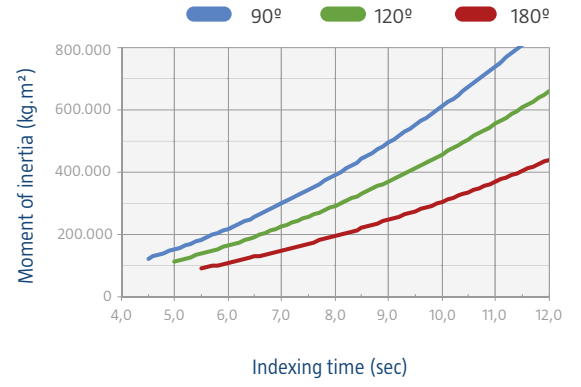
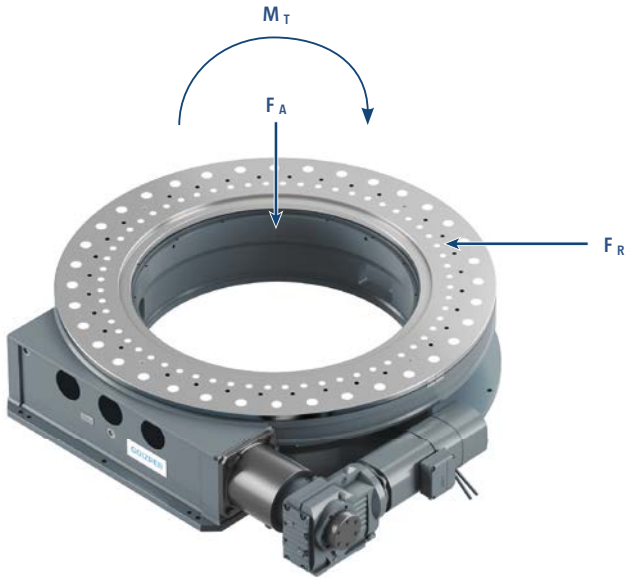
ZPGI 2400B



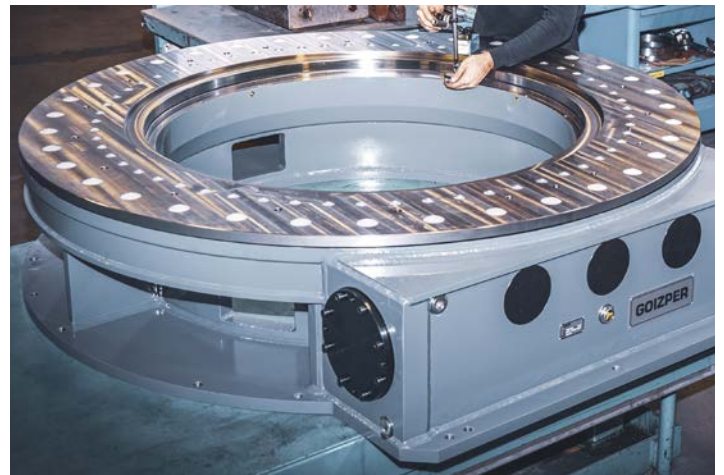
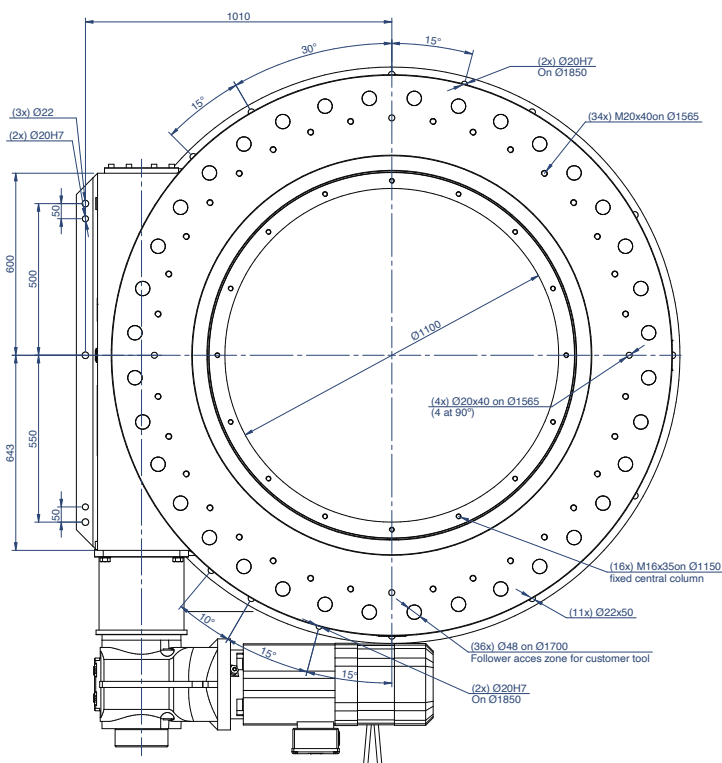
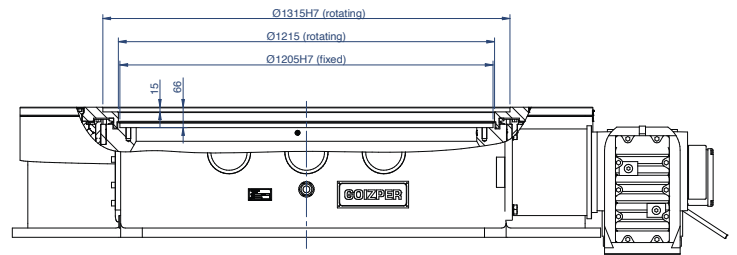
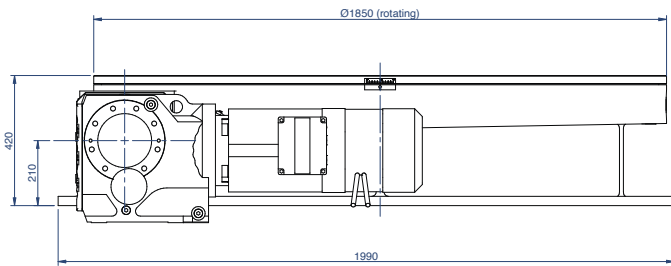
Recommended axial load (F_A)	160 kN
Recommended tilting torque (M_T)	132 kNm
Recommended radial load (F_R)	75 kN



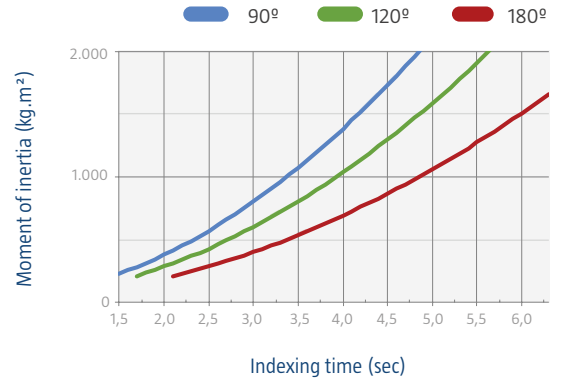
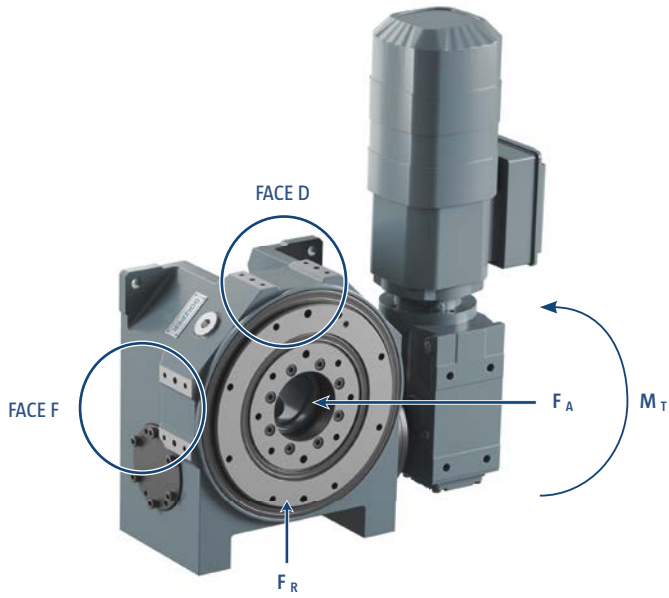
ZPGI 3400B



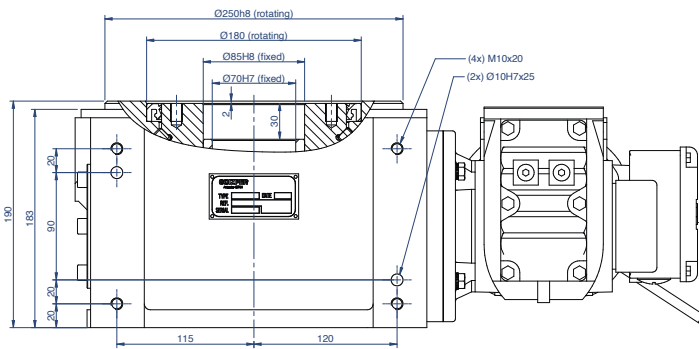
Recommended axial load (F_A)	250 kN
Recommended tilting torque (M_T)	341 kNm
Recommended radial load (F_R)	98 kN



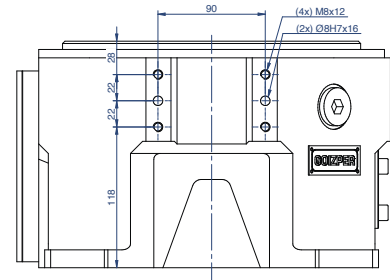
ZPGI 400U



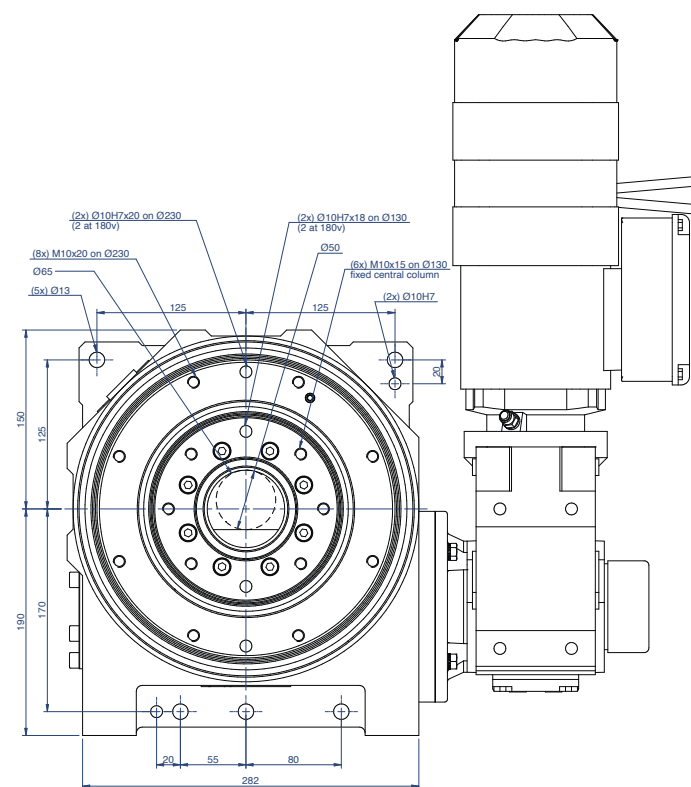
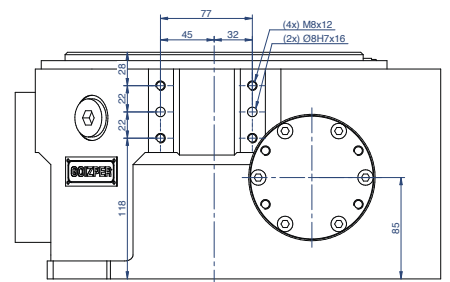
Recommended axial load (F_A)	20 kN
Recommended tilting torque (M_T)	4 kNm
Recommended radial load (F_R)	10 kN



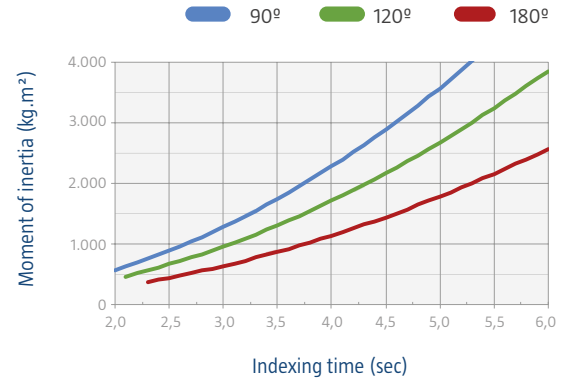
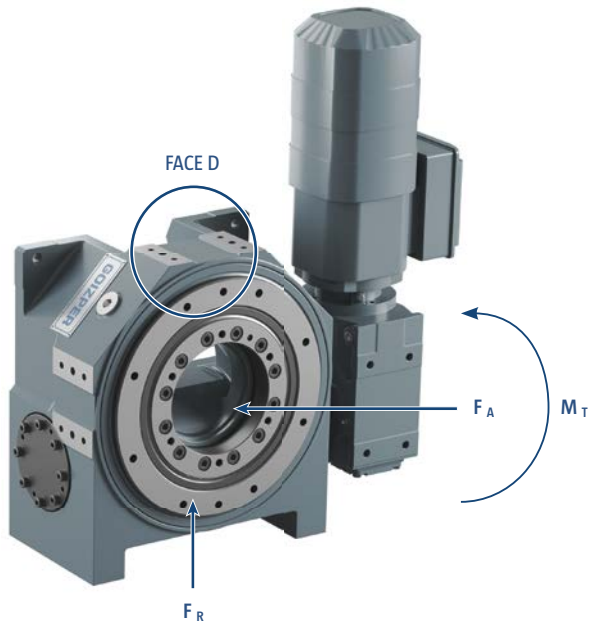
FACE D



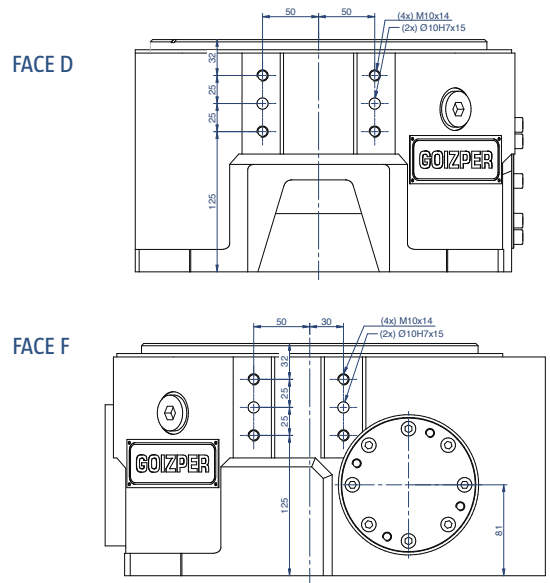
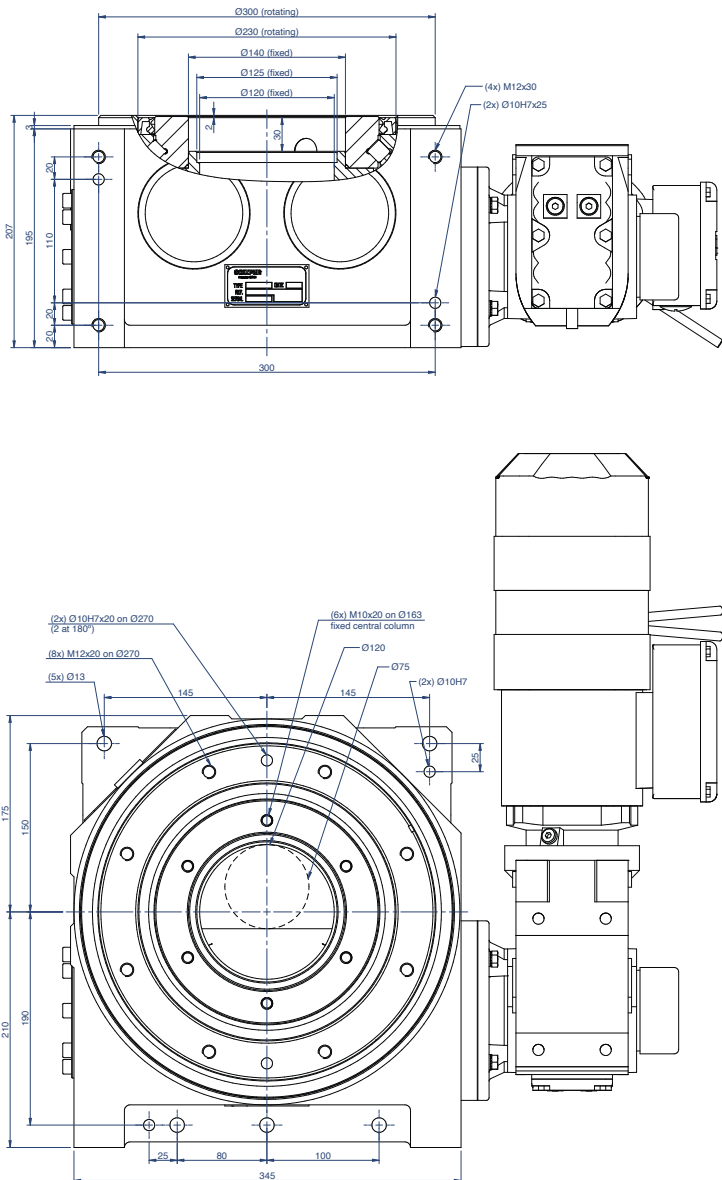
FACE F



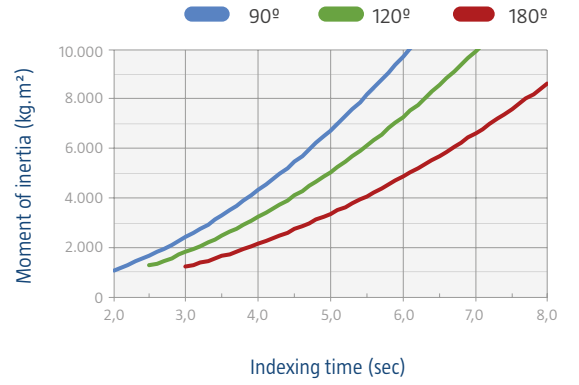
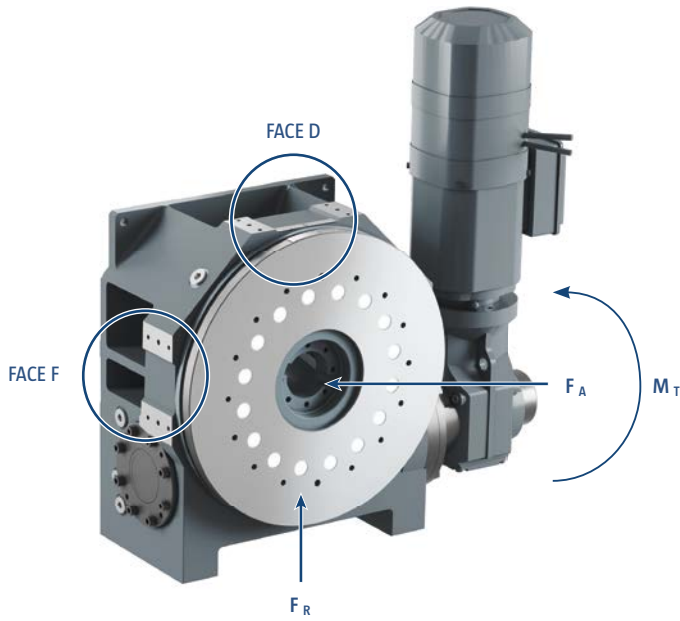
ZPGI 600U



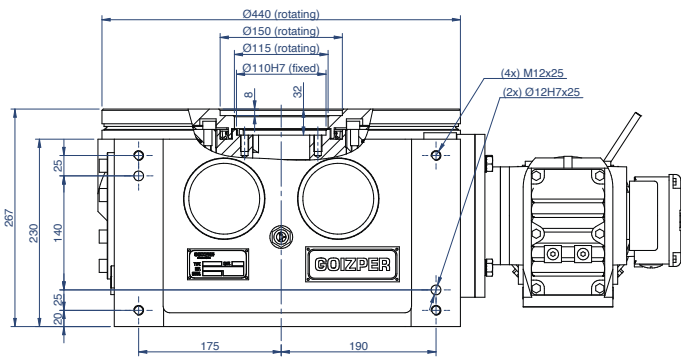
Recommended axial load (F_A)	30 kN
Recommended tilting torque (M_T)	8 kNm
Recommended radial load (F_R)	16 kN



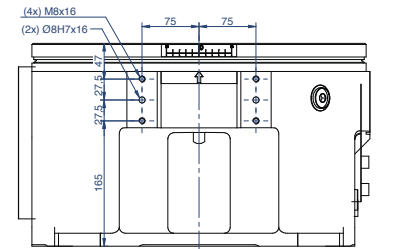
ZPGI 800U



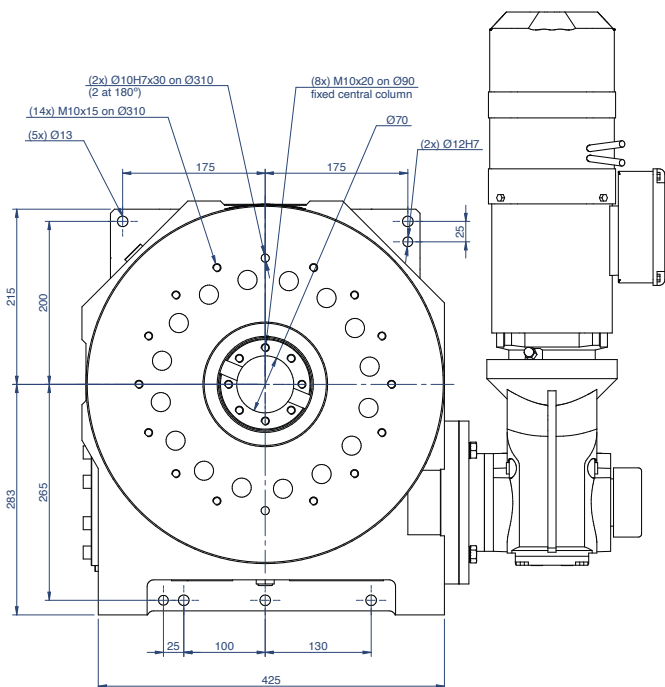
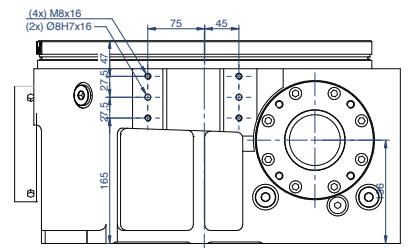
Recommended axial load (F_A)	35 kN
Recommended tilting torque (M_T)	9 kNm
Recommended radial load (F_R)	20 kN



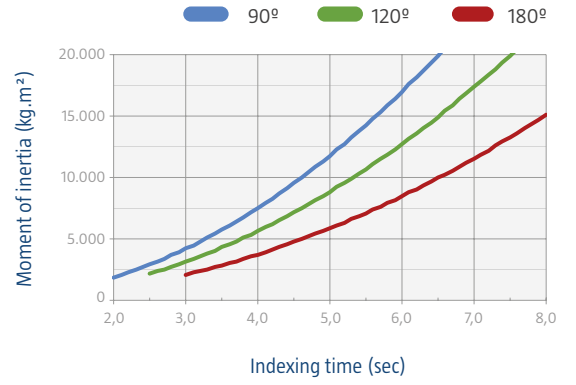
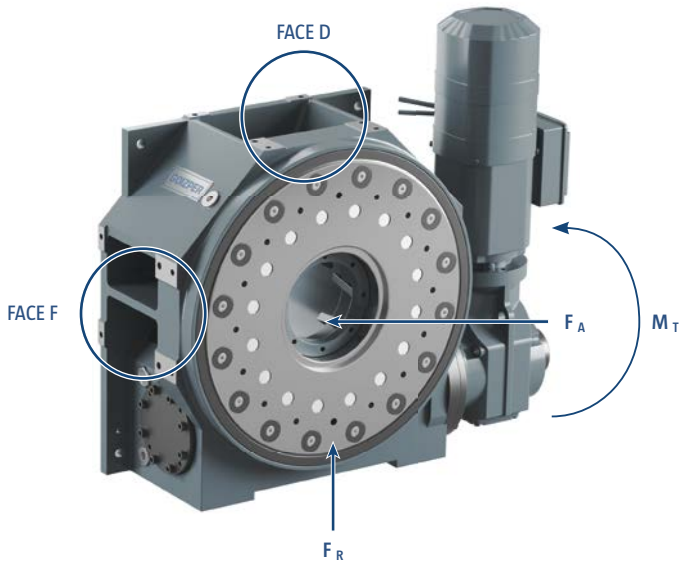
FACE D



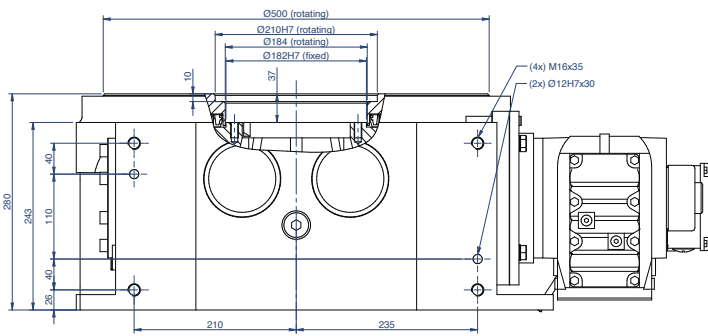
FACE F



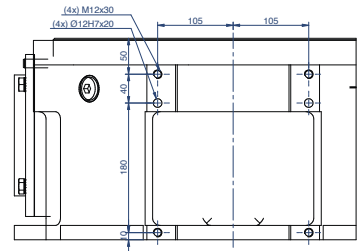
ZPGI 900U



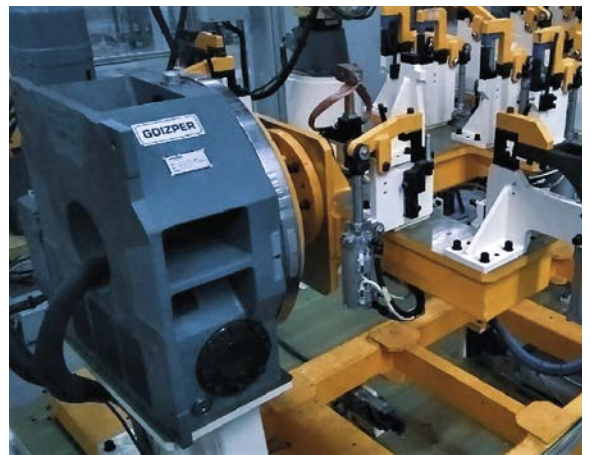
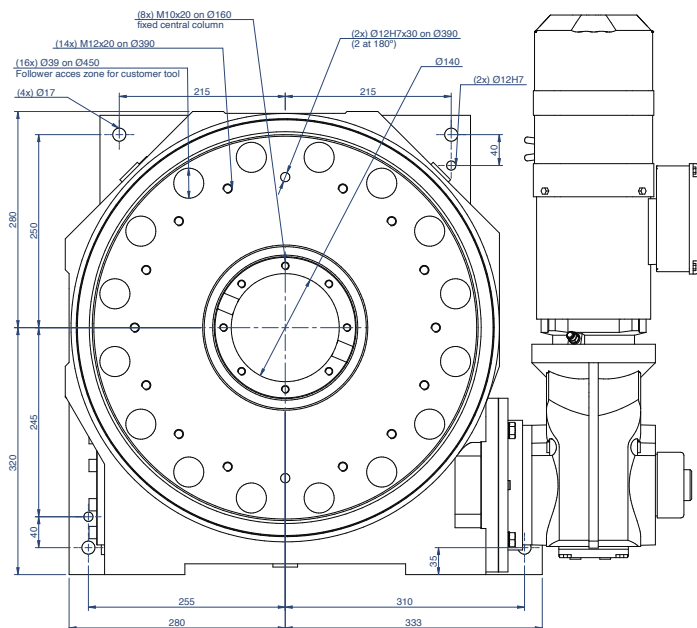
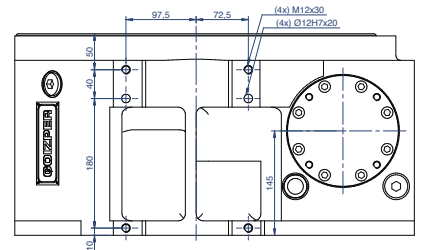
Recommended axial load (F_A)	50 kN
Recommended tilting torque (M_T)	12 kNm
Recommended radial load (F_R)	23 kN



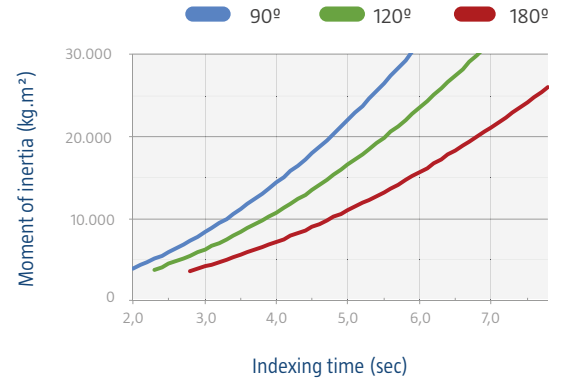
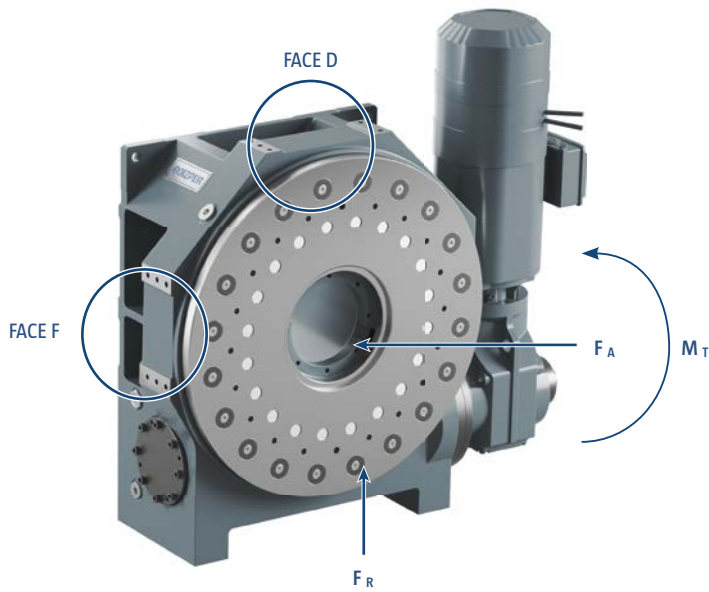
FACE D



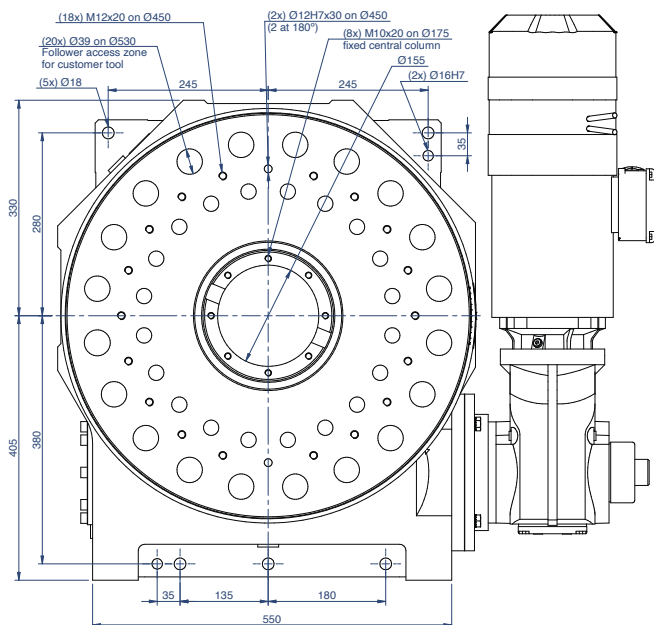
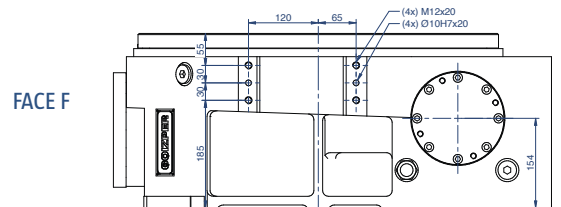
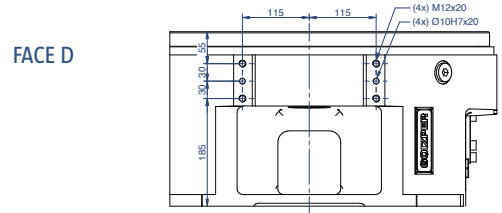
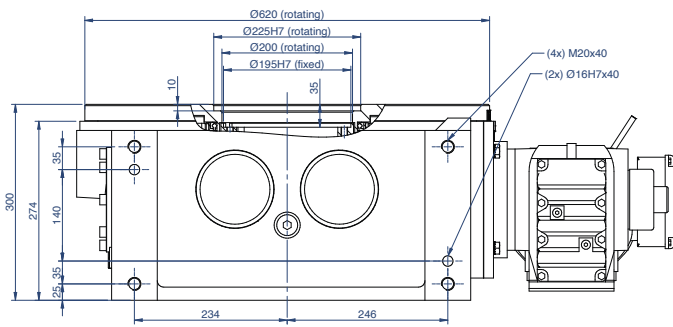
FACE F



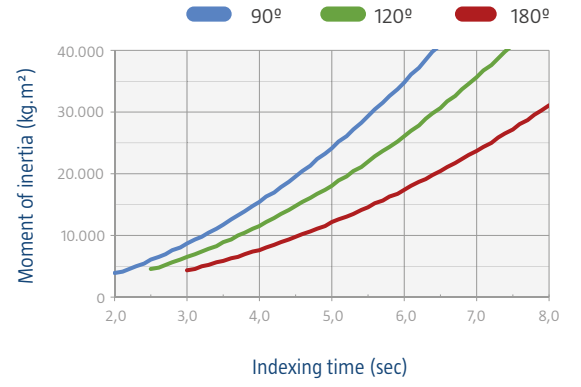
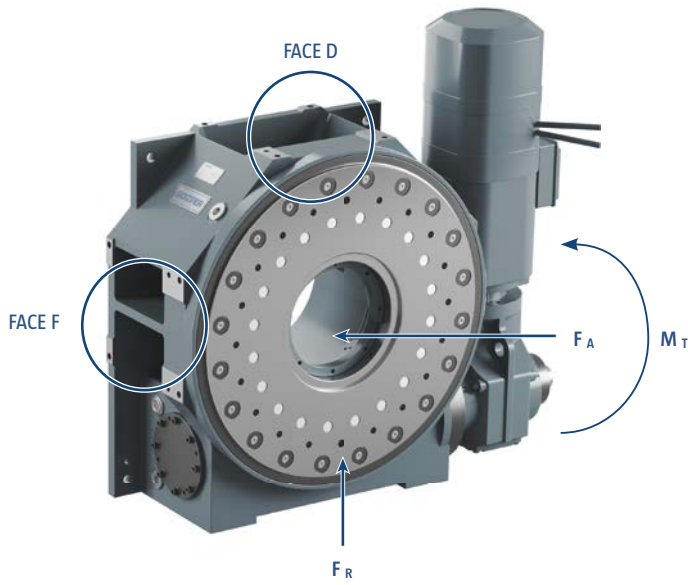
ZPGI 1100U



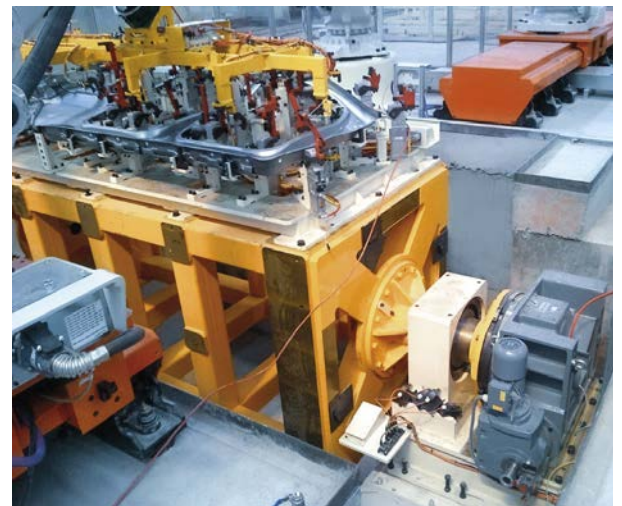
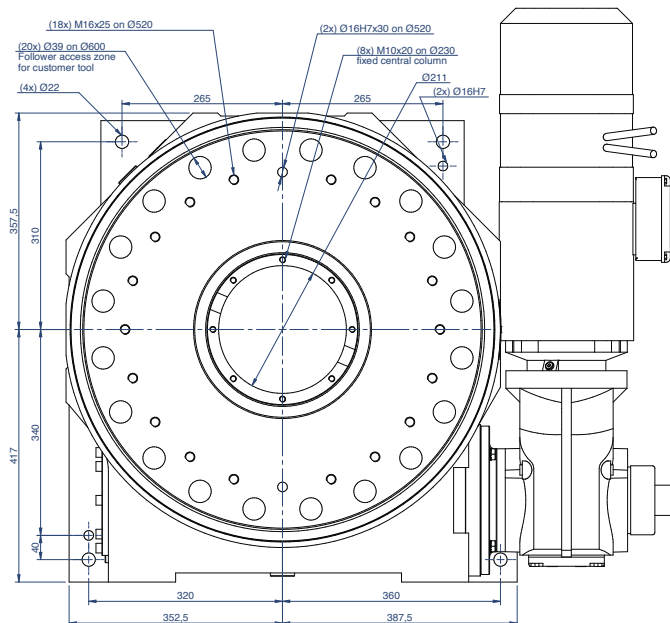
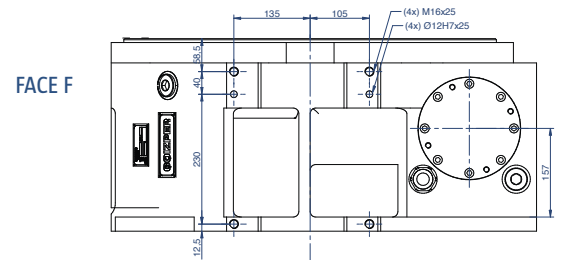
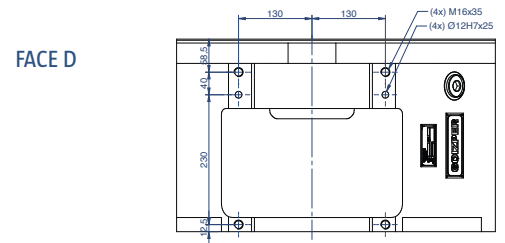
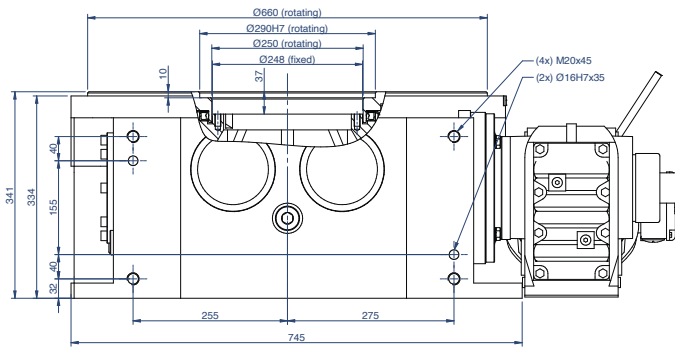
Recommended axial load (F_A)	70 kN
Recommended tilting torque (M_T)	24 kNm
Recommended radial load (F_R)	29 kN



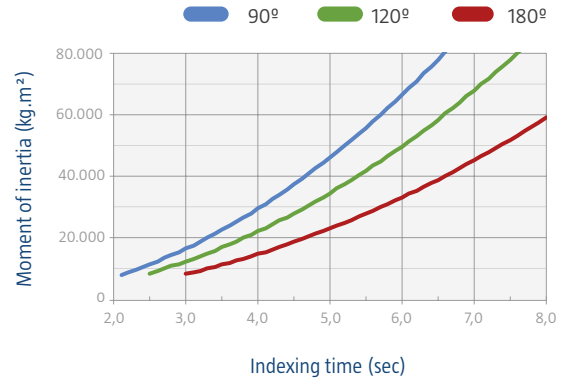
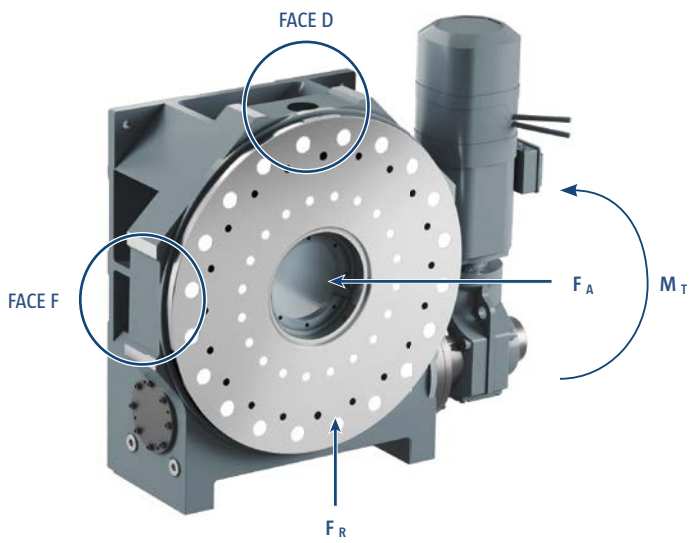
ZPGI 1200U



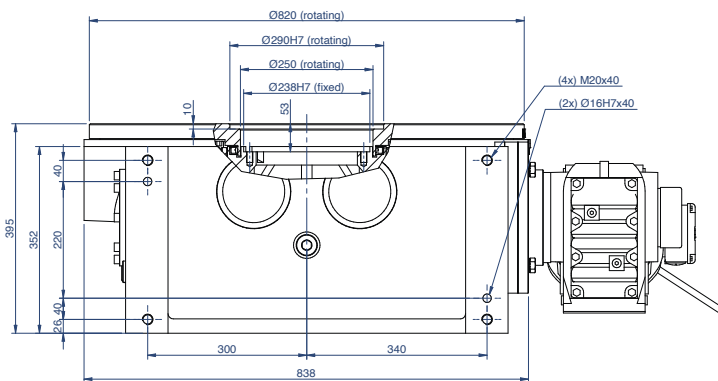
Recommended axial load (F_A)	80 kN
Recommended tilting torque (M_T)	35 kNm
Recommended radial load (F_R)	35 kN



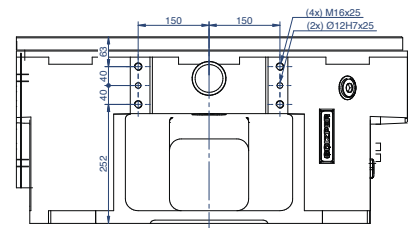
ZPGI 1400U



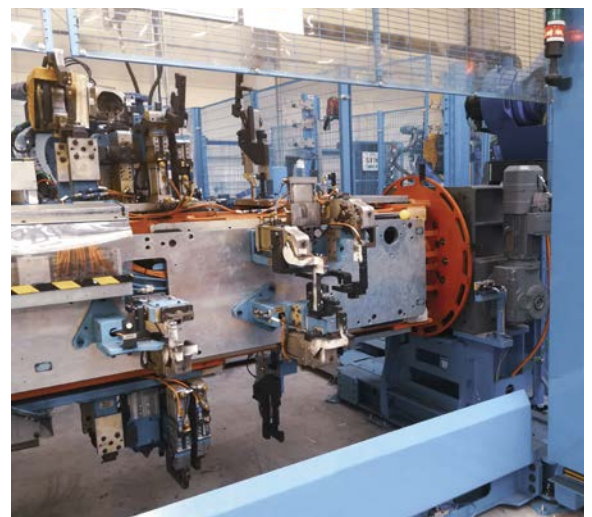
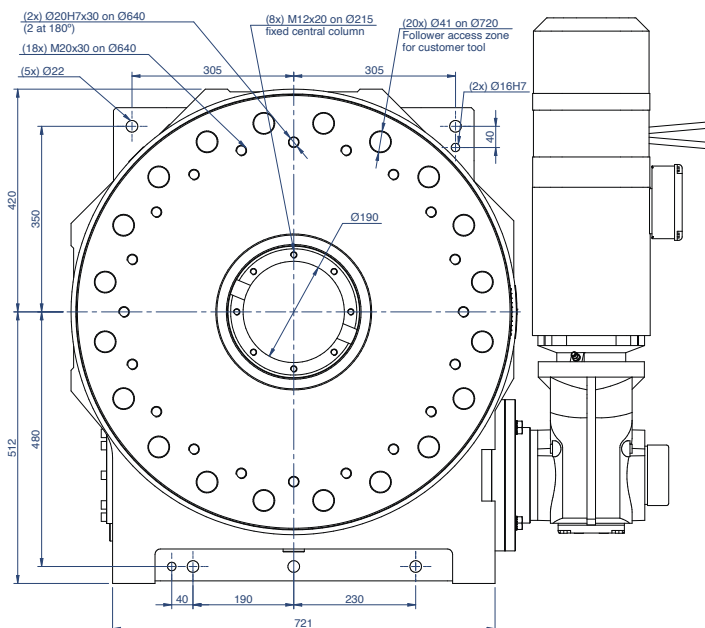
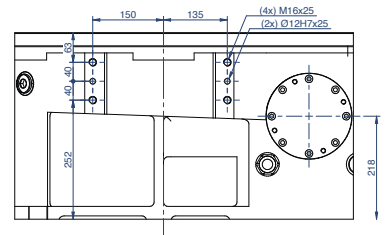
Recommended axial load (F_A)	100 kN
Recommended tilting torque (M_T)	35 kNm
Recommended radial load (F_R)	47 kN



FACE D



FACE F



QUESTIONNAIRE

CUSTOMER CONTACT DETAILS

COMPANY NAME	
CONTACT NAME	
PROJECT NAME	

PHONE	
E-MAIL	
DATE	

APPLICATIONS DETAILS

NUMBER OF STATIONS/STOPS	
OUTPUT ANGLE	
INDEX TIME [T] (sec) / STATION TO STATION	

Choose the type of application that suits your needs. Just fill in the required fields:

1. Rotating Plate - Dial Plate

DIMENSIONS / EXTERNAL FORCES & WEIGHT

DIAMETER (D) mm

MASS kg

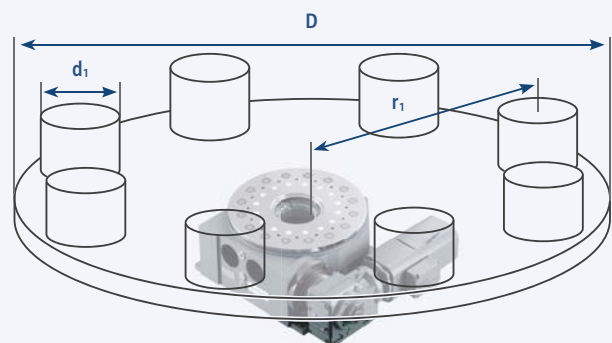
If toolings are from different sizes, please, indicate the biggest "d1" and "m1".

DIAMETER (d1) mm

CG RADIUS (r1) mm

MASS per jig/tooling kg

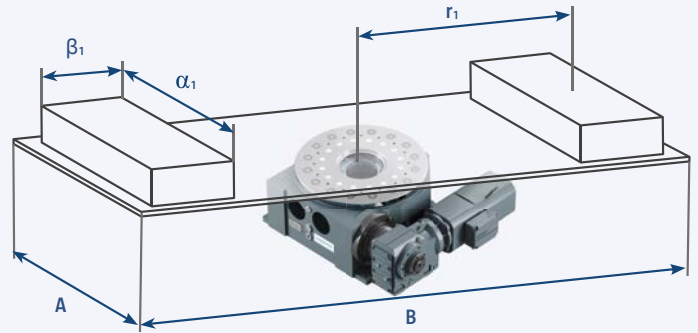
NUMBER of jig/tooling



2. Rotating Plate - Vertical - Welding

FRAME

A	<input type="text"/>	mm
B	<input type="text"/>	mm
M	<input type="text"/>	kg
Swing \varnothing D	<input type="text"/>	mm



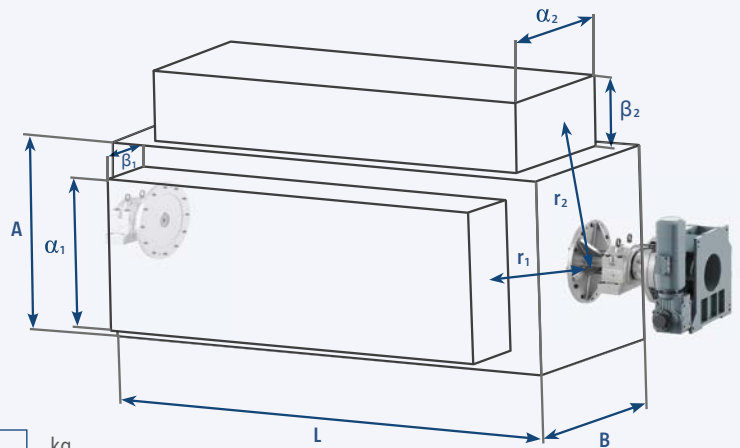
N° TOOLING

α_1	<input type="text"/>	mm	m_1	<input type="text"/>	kg
β_1	<input type="text"/>	mm	r_1	<input type="text"/>	mm
α_2	<input type="text"/>	mm	m_2	<input type="text"/>	kg
β_2	<input type="text"/>	mm	r_2	<input type="text"/>	mm

3. Trunion - Horizontal - Welding

FRAME

A	<input type="text"/>	mm
B	<input type="text"/>	mm
L	<input type="text"/>	mm
M	<input type="text"/>	kg



N° TOOLING

α_1	<input type="text"/>	mm	m_1	<input type="text"/>	kg
β_1	<input type="text"/>	mm	r_1	<input type="text"/>	mm
α_2	<input type="text"/>	mm	m_2	<input type="text"/>	kg
β_2	<input type="text"/>	mm	r_2	<input type="text"/>	mm

ADDITIONAL EXTERNAL FORCES

AXIAL FORCE F_A (N) at r_{FA} mm
 RADIAL FORCE F_R (N) at r_{FR} mm
 TILT MOMENT M_k (Nm) at r_{Mk} mm

SPECIAL NOTES / MORE INFORMATION

MOTOR SELECTION AND INFORMATION

MOTOR BRAND GOIZPER STANDARD OTHER
 VOLTAGE V
 FREQUENCY Hz

GOIZPER

YOUR PARTNER
IN POWER TRANSMISSION



GOIZPER GROUP (Headquarter)

Antigua, 4
20577 Antzuola
Gipuzkoa - Spain

Tel.: +34 943 78 60 00
industrial@goizper.com

GOIZPER FRANCE

Espace d'Activités Becquerel 15,
Avenue Henri Becquerel
51000 Châlons en Champagne
France

Tel.: +33 (0)3 26 21 08 39
goizperfrance@goizper.com

PICCARDO SOLUTIONS SAS

Via Santi Giacomo e Filippo 19/8
16122 Genova
Italy

Tel.: +39 0100925507
pietro.piccardo@piccardosolutions.it

GOIZPER INDIA

Office No. 516, SN 150, 151 Plot No 1,2 & 8,
RAMA EQUATOR,
Morwadi, Pimpri,
Pune, Maharashtra 411018

Tel.: +91 8237703703
Tel.: +91 20-27701273
goizperindia@goizper.com

- GOIZPER GROUP (Headquarter)
- GOIZPER CHINA
- GOIZPER (Sales Offices)

GOIZPER GmbH

Bevertalstr. 20
42499 Hückeswagen
Deutschland

Tel.: +49 (0)2192 935 99 03
goizperdeutschland@goizper.com

GOIZPER TRANSMISSION MACHINERY (WUXI) CO., LTD.

No. 3 Workshop, Fengneng Road,
Wind Power Science & Technology Industrial
Park,
Huishan Economic Development Zone,
214174 Wuxi, Jiangsu - China
Tel.: +86 186 217 020 36
goizperchina@goizper.com

GOIZPER INTELLIGENT TECHNOLOGY (SHANGHAI) CO., LTD

Room 611-612, No. 1168, Huiyi Road (Global
building)
Jiading, Shanghai
China

Tel.: +86 21 6990 2136
goizperchina@goizper.com