

# WEEKLY PIGKILL REPORT

Week 48  
Week ending 29th August 2021



| AVG. WEIGHT (KG)                              | % CHANGE IN PIG # FROM PREVIOUS YR | PRIME PIG NUMBER FROM PREVIOUS WEEK | CONSUMPTION 100% NZPORK (KG) | IMPORTED PORK COMPARED JULY 2020 |
|---|------------------------------------|-------------------------------------|------------------------------|----------------------------------|
| <b>WK48 20-21: 70.79</b><br>Wk48 19-20: 71.31 | -0.9%                              | Wk48: 11,177<br>Wk47: 11,633        | July21: 8.70<br>June21:8.65  | +5,336 (t CWE)                   |

## MARKET COMMENTARY – previous commentary Week 44 (ending 1<sup>st</sup> Aug 2021)

| Date   | IMPORTED PROD Year ending (t CWE) | DOMESTIC PROD year ending (t CWE) | Tonnes TOTAL PROD | IMPORTS % | Estimated POPULATION (000) | TOTAL CONSUMPTION PER CAPITA | Kg 100% NZPork | Kg Pork imports |
|--------|-----------------------------------|-----------------------------------|-------------------|-----------|----------------------------|------------------------------|----------------|-----------------|
| Jul-21 | 71,289                            | 44,670                            | 115,959           | 61.48     | 5,134                      | 22.59                        | 8.70           | 13.9            |
| Jun-21 | 67,693                            | 44,359                            | 112,053           | 60.41     | 5,131                      | 21.84                        | 8.65           | 13.2            |
| May-21 | 65,130                            | 44,656                            | 109,786           | 59.32     | 5,127                      | 21.41                        | 8.71           | 12.7            |
| Apr-21 | 63,856                            | 44,811                            | 108,667           | 58.76     | 5,122                      | 21.22                        | 8.75           | 12.5            |
| Mar-21 | 62,375                            | 43,976                            | 106,351           | 58.65     | 5,117                      | 20.79                        | 8.59           | 12.2            |
| Feb-21 | 62,466                            | 43,733                            | 106,199           | 58.82     | 5,114                      | 20.76                        | 8.55           | 12.2            |
| Jan-21 | 62,966                            | 43,827                            | 106,793           | 58.96     | 5,109                      | 20.90                        | 8.58           | 12.3            |
| Dec-20 | 61,730                            | 44,186                            | 105,916           | 58.28     | 5,099                      | 20.77                        | 8.67           | 12.1            |
| Nov-20 | 60,364                            | 43,672                            | 104,036           | 58.02     | 5,096                      | 20.42                        | 8.57           | 11.8            |
| Oct-20 | 61,103                            | 43,485                            | 104,588           | 58.42     | 5,094                      | 20.53                        | 8.54           | 12.0            |
| Sep-20 | 61,390                            | 43,799                            | 105,189           | 58.36     | 5,061                      | 20.78                        | 8.65           | 12.1            |
| Aug-20 | 62,817                            | 43,649                            | 106,466           | 59.00     | 5,020                      | 21.21                        | 8.69           | 12.5            |
| Jul-20 | 65,953                            | 43,761                            | 109,714           | 60.11     | 5,010                      | 21.94                        | 8.74           | 13.2            |

| Equivalent pig kill |         |              |              |                |            |
|---------------------|---------|--------------|--------------|----------------|------------|
| Year                | Week 48 | Year to date | Annual total | Carcass weight | Average kg |
| 2020-2021           | 11,339  | 575,783      |              |                |            |
| 2019-2020           | 11,899  | 581,252      | 637,085      | 45,477         | 71.38      |
| 2018-2019           | 11,975  | 570,666      | 621,040      | 43,852         | 70.61      |
| 2017-2018           | 12,920  | 603,077      | 651,412      | 46,403         | 71.23      |
| 2016-2017           | 12,770  | 611,871      | 659,982      | 46,855         | 70.99      |
| 2015-2016           | 11,937  | 577,216      | 625,498      | 44,201         | 70.67      |

DISCLAIMER: Pork production data is provisional and may be revised without notice. All due care has been taken in preparing this information, however New Zealand Pork does not guarantee its accuracy. To the extent possible New Zealand Pork's liability is excluded, and persons acting in reliance on the information do so at their own risk. This information is licensed under the [Creative Commons Attribution-Noncommercial 3.0 New Zealand license](https://creativecommons.org/licenses/by-nc/3.0/)

# WEEKLY PIGKILL REPORT

Week 48  
Week ending 29th August 2021



## NATIONAL PIG SLAUGHTER MONITOR PREPARED BY NEW ZEALAND PORK

| PIG KILL FULL WEEK ENDING <sup>1</sup> : |        | 29/8/2021           |                |                  |                           |                                     |  | Week 48                   |                         | WEEKLY KILL COMPARISON |               |                                      |                                   |   |
|--|--------|---------------------|----------------|------------------|---------------------------|-------------------------------------|--|---------------------------|-------------------------|------------------------|---------------|--------------------------------------|-----------------------------------|---|
|  |        | NUMBER OF CARCASSES | WEIGHT (KG)    | AVG. WEIGHT (KG) | YEAR TO DATE WEIGHT TONNE | YEAR TO DATE WEIGHT LAST YEAR TONNE | % CHANGE IN WEIGHT COMPARED TO LAST YEAR | WHOLE CARCASSES CONDEMNED | TOTAL KILL <sup>2</sup> | LAST WK                | % CHANGE      | CUMULATIVE YEAR TO DATE <sup>3</sup> | CUMULATIVE YEAR TO DATE LAST YEAR | % CHANGE IN PIG NOS COMPARED TO LAST YEAR |
| PIGS < 50 KG                             | NTH IS | 138                 | 6,381          | 46.24            | 309                       | 312                                 | -1.1%                                    | 3                         | 141                     | 135                    | 4.4%          | 7,088                                | 7,577                             | -6.5%                                     |
|  | STH IS | 116                 | 4,218          | 36.36            | 389                       | 391                                 | -0.6%                                    | 0                         | 116                     | 261                    | -55.6%        | 11,592                               | 11,074                            | 4.7%                                      |
|  | NZ     | <b>254</b>          | <b>10,599</b>  | <b>41.73</b>     | <b>697</b>                | <b>703</b>                          | <b>-0.8%</b>                             | <b>3</b>                  | <b>257</b>              | <b>396</b>             | <b>-35.1%</b> | <b>18,680</b>                        | <b>18,651</b>                     | <b>0.2%</b>                               |
| PIGS 50-64.9KG                           | NTH IS | 1,220               | 73,104         | 59.92            | 3,237                     | 3,692                               | -12.3%                                   | 0                         | 1,220                   | 1,064                  | 14.7%         | 54,318                               | 62,163                            | -12.6%                                    |
|  | STH IS | 1,834               | 110,880        | 60.46            | 5,011                     | 4,548                               | 10.2%                                    | 2                         | 1,836                   | 2,345                  | -21.7%        | 83,677                               | 76,117                            | 9.9%                                      |
|  | NZ     | <b>3,054</b>        | <b>183,984</b> | <b>60.24</b>     | <b>8,248</b>              | <b>8,240</b>                        | <b>0.1%</b>                              | <b>2</b>                  | <b>3,056</b>            | <b>3,409</b>           | <b>-10.4%</b> | <b>137,995</b>                       | <b>138,280</b>                    | <b>-0.2%</b>                              |
| PIGS 65-74.9 KG                          | NTH IS | 1,878               | 130,930        | 69.72            | 6,070                     | 6,044                               | 0.4%                                     | 1                         | 1,879                   | 1,838                  | 2.2%          | 86,873                               | 86,802                            | 0.1%                                      |
|  | STH IS | 3,060               | 212,959        | 69.59            | 11,521                    | 11,004                              | 4.7%                                     | 4                         | 3,064                   | 2,908                  | 5.4%          | 165,274                              | 157,343                           | 5.0%                                      |
|  | NZ     | <b>4,938</b>        | <b>343,889</b> | <b>69.64</b>     | <b>17,591</b>             | <b>17,047</b>                       | <b>3.2%</b>                              | <b>5</b>                  | <b>4,943</b>            | <b>4,746</b>           | <b>4.2%</b>   | <b>252,147</b>                       | <b>244,145</b>                    | <b>3.3%</b>                               |
| PIGS 75-84.9 KG                          | NTH IS | 668                 | 52,625         | 78.78            | 2,899                     | 2,876                               | 0.8%                                     | 0                         | 668                     | 809                    | -17.4%        | 36,499                               | 35,267                            | 3.5%                                      |
|  | STH IS | 1,445               | 114,332        | 79.12            | 6,548                     | 7,378                               | -11.2%                                   | 0                         | 1,445                   | 1,472                  | -1.8%         | 82,779                               | 93,460                            | -11.4%                                    |
|  | NZ     | <b>2,113</b>        | <b>166,957</b> | <b>79.01</b>     | <b>9,447</b>              | <b>10,254</b>                       | <b>-7.9%</b>                             | <b>0</b>                  | <b>2,113</b>            | <b>2,281</b>           | <b>-7.4%</b>  | <b>119,278</b>                       | <b>128,727</b>                    | <b>-7.3%</b>                              |
| PIGS 85-94.9 KG                          | NTH IS | 169                 | 14,699         | 86.98            | 298                       | 171                                 | 74.4%                                    | 0                         | 169                     | 102                    | 65.7%         | 3,391                                | 1,904                             | 78.1%                                     |
|  | STH IS | 545                 | 48,338         | 88.69            | 2,260                     | 2,579                               | -12.4%                                   | 0                         | 545                     | 602                    | -9.5%         | 25,519                               | 29,129                            | -12.4%                                    |
|  | NZ     | <b>714</b>          | <b>63,037</b>  | <b>88.29</b>     | <b>2,558</b>              | <b>2,750</b>                        | <b>-7.0%</b>                             | <b>0</b>                  | <b>714</b>              | <b>704</b>             | <b>1.4%</b>   | <b>28,910</b>                        | <b>31,033</b>                     | <b>-6.8%</b>                              |
| PIGS >95 KG                              | NTH IS | 1                   | 95             | 95.00            | 18                        | 12                                  | 43.2%                                    | 0                         | 1                       | 7                      | -85.7%        | 182                                  | 124                               | 46.8%                                     |
|  | STH IS | 93                  | 9,140          | 98.28            | 395                       | 584                                 | -32.3%                                   | 0                         | 93                      | 90                     | 3.3%          | 3,959                                | 5,559                             | -28.8%                                    |
|  | NZ     | <b>94</b>           | <b>9,235</b>   | <b>98.24</b>     | <b>413</b>                | <b>596</b>                          | <b>-30.8%</b>                            | <b>0</b>                  | <b>94</b>               | <b>97</b>              | <b>-3.1%</b>  | <b>4,141</b>                         | <b>5,683</b>                      | <b>-27.1%</b>                             |
| TOTAL PRIME PIGS                         | NTH IS | 4,074               | 277,834        | 68.20            | 12,831                    | 13,107                              | -2.1%                                    | 4                         | 4,078                   | 3,955                  | 3.1%          | 188,351                              | 193,837                           | -2.8%                                     |
|  | STH IS | 7,093               | 499,867        | 70.47            | 26,123                    | 26,483                              | -1.4%                                    | 6                         | 7,099                   | 7,678                  | -7.5%         | 372,800                              | 372,682                           | 0.0%                                      |
|  | NZ     | <b>11,167</b>       | <b>777,701</b> | <b>69.64</b>     | <b>38,954</b>             | <b>39,590</b>                       | <b>-1.6%</b>                             | <b>10</b>                 | <b>11,177</b>           | <b>11,633</b>          | <b>-3.9%</b>  | <b>561,151</b>                       | <b>566,519</b>                    | <b>-0.9%</b>                              |
| CHOPPERS                                 | NTH IS | 31                  | 5,272          | 170.06           | 375                       | 287                                 | 30.7%                                    | 0                         | 31                      | 54                     | -42.6%        | 2,504                                | 1,995                             | 25.5%                                     |
|  | STH IS | 130                 | 18,891         | 145.32           | 1,596                     | 1,668                               | -4.3%                                    | 1                         | 131                     | 248                    | -47.2%        | 12,128                               | 12,738                            | -4.8%                                     |
|  | NZ     | <b>161</b>          | <b>24,163</b>  | <b>150.08</b>    | <b>1,971</b>              | <b>1,955</b>                        | <b>0.8%</b>                              | <b>1</b>                  | <b>162</b>              | <b>302</b>             | <b>-46.4%</b> | <b>14,632</b>                        | <b>14,733</b>                     | <b>-0.7%</b>                              |
| TOTAL                                    | NZ     | <b>11,328</b>       | <b>801,864</b> | <b>70.79</b>     | <b>40,925</b>             | <b>41,545</b>                       | <b>-1.5%</b>                             | <b>11</b>                 | <b>11,339</b>           | <b>11,935</b>          | <b>-5.0%</b>  | <b>575,783</b>                       | <b>581,252</b>                    | <b>-0.9%</b>                              |

<sup>1</sup> Information gathered weekly from all abattoirs licensed to kill pigs.

<sup>2</sup> Includes carcasses (after removal of condemned parts) inspected and passed for human consumption, and whole carcasses condemned up to and at scales

<sup>3</sup> Meat Year (1 October – 30 September) week to date

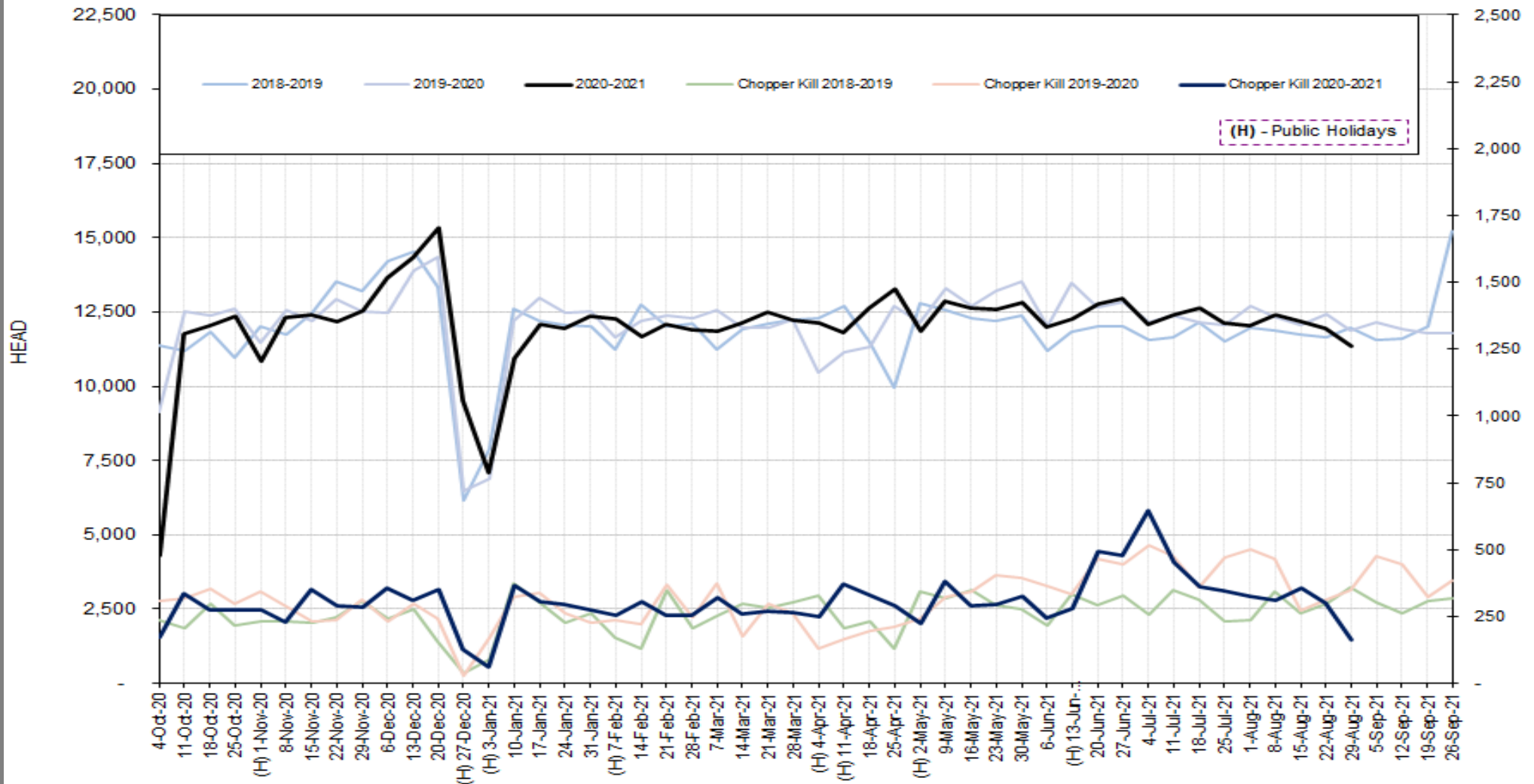
DISCLAIMER: Pork production data is provisional and may be revised without notice. All due care has been taken in preparing this information, however New Zealand Pork does not guarantee its accuracy. To the extent possible New Zealand Pork's liability is excluded, and persons acting in reliance on the information do so at their own risk. This information is licensed under the [Creative Commons Attribution-Noncommercial 3.0 New Zealand license](https://creativecommons.org/licenses/by-nc/3.0/)

# WEEKLY PIGKILL REPORT

Week 48  
Week ending 29th August 2021



### TREND IN THE WEEKLY PIG KILL



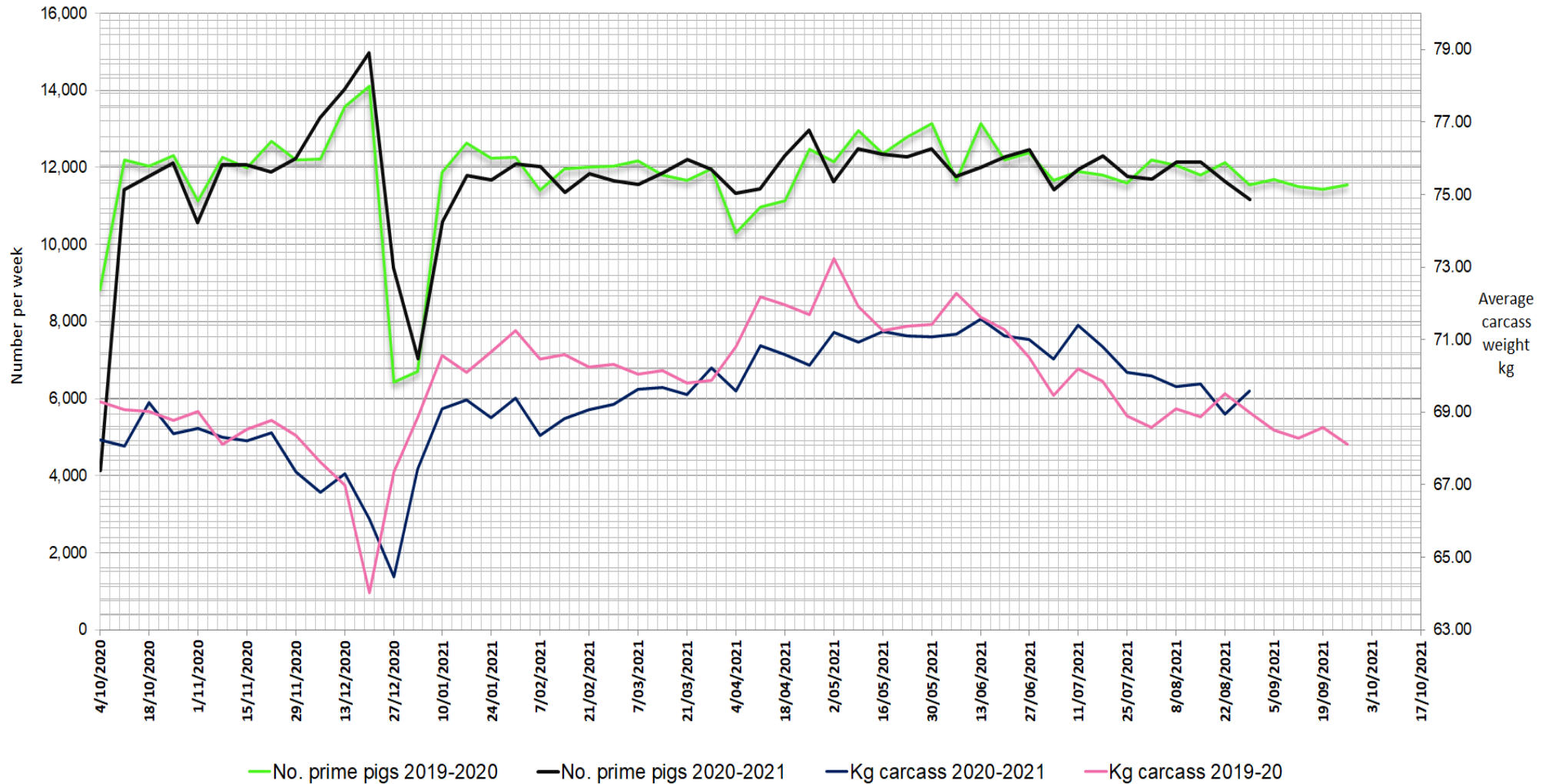
DISCLAIMER: Pork production data is provisional and may be revised without notice. All due care has been taken in preparing this information, however New Zealand Pork does not guarantee its accuracy. To the extent possible New Zealand Pork's liability is excluded, and persons acting in reliance on the information do so at their own risk. This information is licensed under the [Creative Commons Attribution-Noncommercial 3.0 New Zealand license](https://creativecommons.org/licenses/by-nc/3.0/)

# WEEKLY PIGKILL REPORT

Week 48  
Week ending 29th August 2021



## WEEKLY PIG KILL DATA (Prime pigs)



DISCLAIMER: Pork production data is provisional and may be revised without notice. All due care has been taken in preparing this information, however New Zealand Pork does not guarantee its accuracy. To the extent possible New Zealand Pork's liability is excluded, and persons acting in reliance on the information do so at their own risk. This information is licensed under the [Creative Commons Attribution-Noncommercial 3.0 New Zealand license](https://creativecommons.org/licenses/by-nc/3.0/)