

WEEKLY PIGKILL REPORT

Week 47
Week ending 22nd August 2021



**AVG. WEIGHT
(KG)**

WK47 20-21: 70.84

Wk47 19-20: 71.21



**% CHANGE IN PIG #
FROM PREVIOUS YR**

-0.9%



**PRIME PIG NUMBER
FROM PREVIOUS WEEK**

Wk47: 11,633

Wk46: 11,803



**CONSUMPTION
100% NZPORK (KG)**

June21:8.65

May21: 8.71

**IMPORTED PORK
COMPARED JUNE 2020**

- 345 (t CWE)



MARKET COMMENTARY – previous commentary Week 44 (ending 1st Aug 2021)

Date	IMPORTED PROD Year ending (t CWE)	DOMESTIC PROD year ending (t CWE)	Tonnes TOTAL PROD	IMPORTS %	Estimated POPULATION (000)	TOTAL CONSUMPTION PER CAPITA	Kg 100% NZPork	Kg Pork imports
Jun-21	67,693	44,359	112,053	60.41	5,131	21.84	8.65	13.2
May-21	65,130	44,656	109,786	59.32	5,127	21.41	8.71	12.7
Apr-21	63,856	44,811	108,667	58.76	5,122	21.22	8.75	12.5
Mar-21	62,375	43,976	106,351	58.65	5,117	20.79	8.59	12.2
Feb-21	62,466	43,733	106,199	58.82	5,114	20.76	8.55	12.2
Jan-21	62,966	43,827	106,793	58.96	5,109	20.90	8.58	12.3
Dec-20	61,730	44,186	105,916	58.28	5,099	20.77	8.67	12.1
Nov-20	60,364	43,672	104,036	58.02	5,096	20.42	8.57	11.8
Oct-20	61,103	43,485	104,588	58.42	5,094	20.53	8.54	12.0
Sep-20	61,390	43,799	105,189	58.36	5,061	20.78	8.65	12.1
Aug-20	62,817	43,649	106,466	59.00	5,020	21.21	8.69	12.5
Jul-20	65,953	43,761	109,714	60.11	5,010	21.94	8.74	13.2
Jun-20	67,348	43,901	111,249	60.53	5,007	22.21	8.76	13.4

Equivalent pig kill				Tonnes	
Year	Week 47	Year to date	Annual total	Carcass weight	Average kg
2020-2021	11,935	564,444			
2019-2020	12,443	569,353	637,085	45,477	71.38
2018-2019	11,660	558,691	621,040	43,852	70.61
2017-2018	12,767	590,155	651,412	46,403	71.23
2016-2017	13,062	599,101	659,982	46,855	70.99
2015-2016	11,986	565,135	625,498	44,201	70.67

DISCLAIMER: Pork production data is provisional and may be revised without notice. All due care has been taken in preparing this information, however New Zealand Pork does not guarantee its accuracy. To the extent possible New Zealand Pork's liability is excluded, and persons acting in reliance on the information do so at their own risk. This information is licensed under the [Creative Commons Attribution-Noncommercial 3.0 New Zealand license](https://creativecommons.org/licenses/by-nc/3.0/)

WEEKLY PIGKILL REPORT

Week 47
Week ending 22nd August 2021



NATIONAL PIG SLAUGHTER MONITOR PREPARED BY NEW ZEALAND PORK

PIG KILL FULL WEEK ENDING ¹ :		22/8/2021						Week 47		WEEKLY KILL COMPARISON				
		NUMBER OF CARCASSES	WEIGHT (KG)	AVG. WEIGHT (KG)	YEAR TO DATE WEIGHT TONNE	YEAR TO DATE WEIGHT LAST YEAR TONNE	% CHANGE IN WEIGHT COMPARED TO LAST YEAR	WHOLE CARCASSES CONDEMNED	TOTAL KILL ²	LAST WK	% CHANGE	CUMULATIVE YEAR TO DATE ³	CUMULATIVE YEAR TO DATE LAST YEAR	% CHANGE IN PIG NOS COMPARED TO LAST YEAR
PIGS < 50 KG	NTH IS	128	5,650	44.14	302	308	-1.8%	7	135	135	0.0%	6,947	7,481	-7.1%
	STH IS	261	9,438	36.16	384	383	0.4%	0	261	173	50.9%	11,476	10,855	5.7%
	NZ	389	15,088	38.79	687	691	-0.6%	7	396	308	28.6%	18,423	18,336	0.5%
PIGS 50-64.9KG	NTH IS	1,064	63,543	59.72	3,164	3,617	-12.5%	0	1,064	1,093	-2.7%	53,098	60,903	-12.8%
	STH IS	2,344	140,597	59.98	4,900	4,436	10.4%	1	2,345	1,893	23.9%	81,841	74,245	10.2%
	NZ	3,408	204,140	59.90	8,064	8,054	0.1%	1	3,409	2,986	14.2%	134,939	135,148	-0.2%
PIGS 65-74.9 KG	NTH IS	1,838	128,817	70.09	5,939	5,925	0.2%	0	1,838	2,098	-12.4%	84,994	85,102	-0.1%
	STH IS	2,907	202,149	69.54	11,308	10,754	5.2%	1	2,908	3,174	-8.4%	162,210	153,775	5.5%
	NZ	4,745	330,966	69.75	17,247	16,679	3.4%	1	4,746	5,272	-10.0%	247,204	238,877	3.5%
PIGS 75-84.9 KG	NTH IS	809	63,633	78.66	2,847	2,809	1.3%	0	809	738	9.6%	35,831	34,434	4.1%
	STH IS	1,472	116,543	79.17	6,434	7,258	-11.4%	0	1,472	1,750	-15.9%	81,334	91,936	-11.5%
	NZ	2,281	180,176	78.99	9,280	10,067	-7.8%	0	2,281	2,488	-8.3%	117,165	126,370	-7.3%
PIGS 85-94.9 KG	NTH IS	102	8,972	87.96	283	166	70.8%	0	102	83	22.9%	3,222	1,847	74.4%
	STH IS	601	53,196	88.51	2,211	2,545	-13.1%	1	602	565	6.5%	24,974	28,744	-13.1%
	NZ	703	62,168	88.43	2,495	2,711	-8.0%	1	704	648	8.6%	28,196	30,591	-7.8%
PIGS >95 KG	NTH IS	7	676	96.57	18	12	45.9%	0	7	14	-50.0%	181	121	49.6%
	STH IS	90	8,935	99.28	386	580	-33.6%	0	90	87	3.4%	3,866	5,528	-30.1%
	NZ	97	9,611	99.08	403	593	-31.9%	0	97	101	-4.0%	4,047	5,649	-28.4%
TOTAL PRIME PIGS	NTH IS	3,948	271,291	68.72	12,553	12,837	-2.2%	7	3,955	4,161	-5.0%	184,273	189,888	-3.0%
	STH IS	7,675	530,858	69.17	25,623	25,957	-1.3%	3	7,678	7,642	0.5%	365,701	365,083	0.2%
	NZ	11,623	802,149	69.01	38,176	38,794	-1.6%	10	11,633	11,803	-1.4%	549,974	554,971	-0.9%
CHOPPERS	NTH IS	54	8,418	155.89	370	279	32.5%	0	54	65	-16.9%	2,473	1,942	27.3%
	STH IS	247	34,173	138.35	1,577	1,625	-3.0%	1	248	293	-15.4%	11,997	12,440	-3.6%
	NZ	301	42,591	141.50	1,947	1,905	2.2%	1	302	358	-15.6%	14,470	14,382	0.6%
TOTAL	NZ	11,924	844,740	70.84	40,123	40,698	-1.4%	11	11,935	12,161	-1.9%	564,444	569,353	-0.9%

¹ Information gathered weekly from all abattoirs licensed to kill pigs.

² Includes carcasses (after removal of condemned parts) inspected and passed for human consumption, and whole carcasses condemned up to and at scales

³ Meat Year (1 October – 30 September) week to date

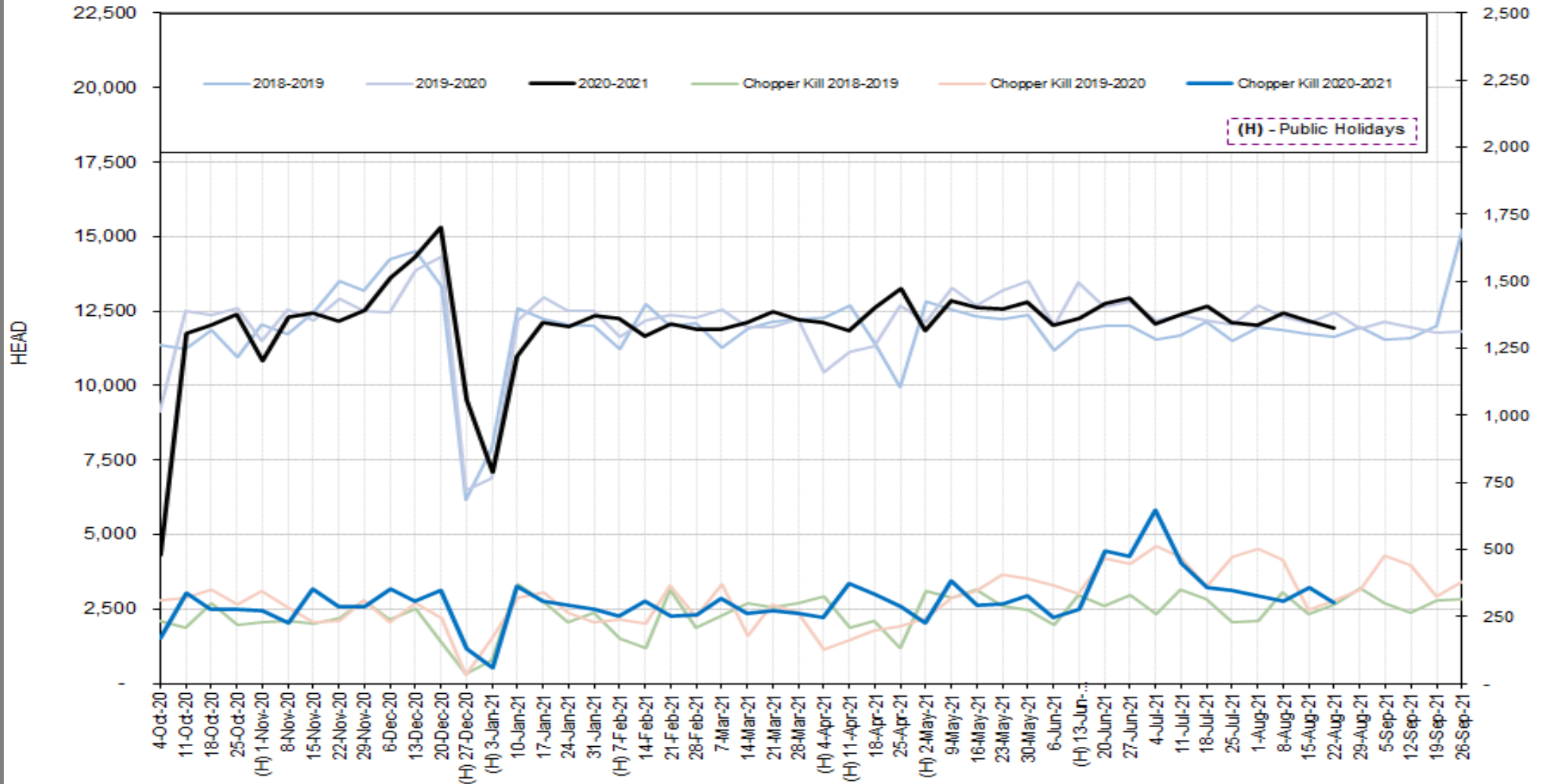
DISCLAIMER: Pork production data is provisional and may be revised without notice. All due care has been taken in preparing this information, however New Zealand Pork does not guarantee its accuracy. To the extent possible New Zealand Pork's liability is excluded, and persons acting in reliance on the information do so at their own risk. This information is licensed under the [Creative Commons Attribution-Noncommercial 3.0 New Zealand license](https://creativecommons.org/licenses/by-nc/3.0/)

WEEKLY PIGKILL REPORT

Week 47
Week ending 22nd August 2021



TREND IN THE WEEKLY PIG KILL



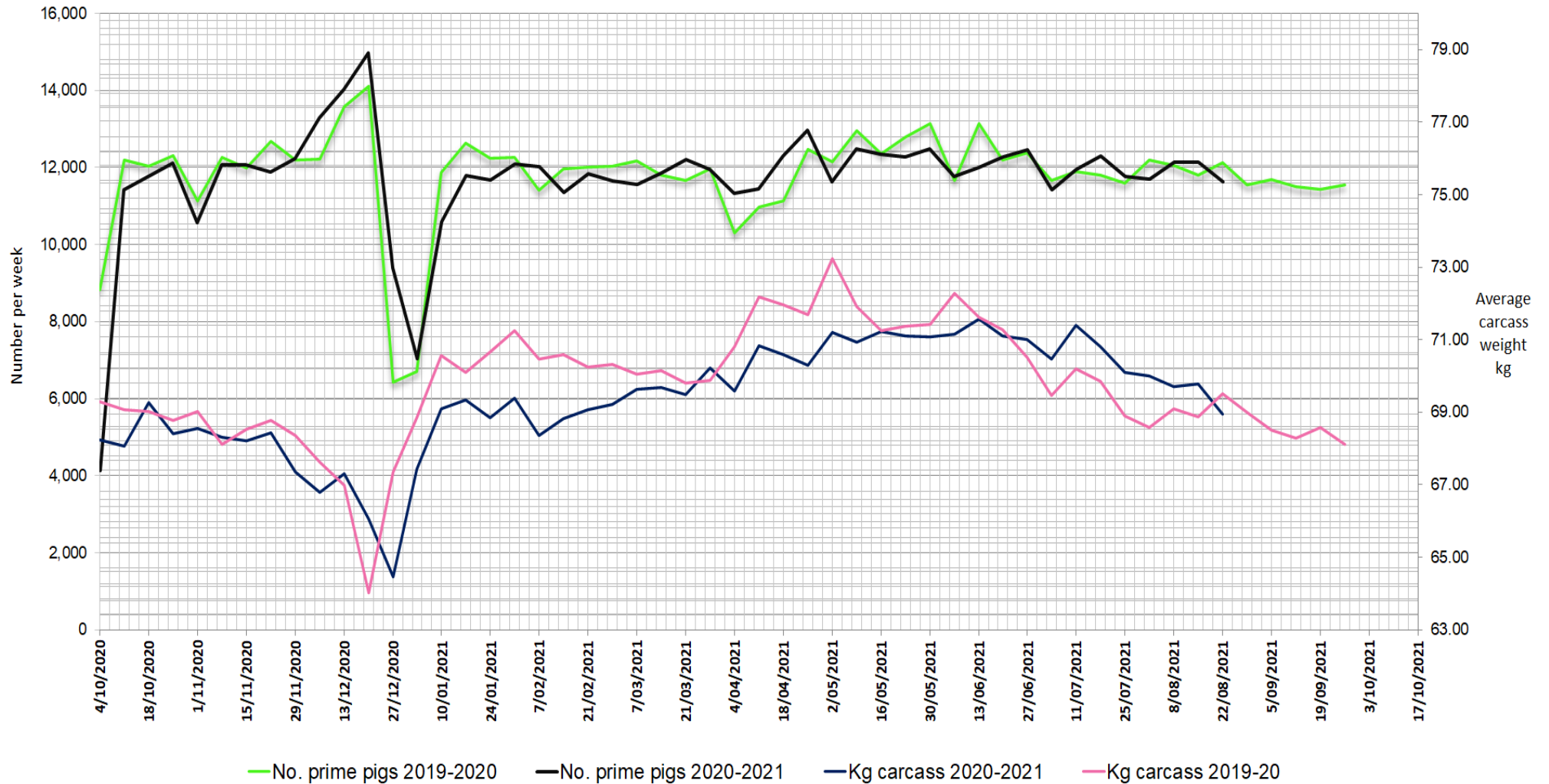
DISCLAIMER: Pork production data is provisional and may be revised without notice. All due care has been taken in preparing this information, however New Zealand Pork does not guarantee its accuracy. To the extent possible New Zealand Pork's liability is excluded, and persons acting in reliance on the information do so at their own risk. This information is licensed under the [Creative Commons Attribution-Noncommercial 3.0 New Zealand license](https://creativecommons.org/licenses/by-nc/3.0/)

WEEKLY PIGKILL REPORT

Week 47
Week ending 22nd August 2021



WEEKLY PIG KILL DATA (Prime pigs)



DISCLAIMER: Pork production data is provisional and may be revised without notice. All due care has been taken in preparing this information, however New Zealand Pork does not guarantee its accuracy. To the extent possible New Zealand Pork's liability is excluded, and persons acting in reliance on the information do so at their own risk. This information is licensed under the [Creative Commons Attribution-Noncommercial 3.0 New Zealand license](https://creativecommons.org/licenses/by-nc/3.0/)