

WEEKLY PIGKILL REPORT

Week 46
Week ending 15th August 2021



AVG. WEIGHT (KG)

WK46 20-21: 71.80

Wk46 19-20: 70.28



% CHANGE IN PIG # FROM PREVIOUS YR

-0.8%



PRIME PIG NUMBER FROM PREVIOUS WEEK

Wk46: 11,803

Wk45: 12,141



CONSUMPTION 100% NZPORK (KG)

June21: 8.65

May21: 8.71

IMPORTED PORK COMPARED JUNE 2020

- 345 (t CWE)



MARKET COMMENTARY – previous commentary Week 44 (ending 1st Aug 2021)

Date	IMPORTED PROD Year ending (t CWE)	DOMESTIC PROD year ending (t CWE)	Tonnes TOTAL PROD	IMPORTS %	Estimated POPULATION (000)	TOTAL CONSUMPTION PER CAPITA	Kg 100% NZPork	Kg Pork imports
Jun-21	67,693	44,359	112,053	60.41	5,131	21.84	8.65	13.2
May-21	65,130	44,656	109,786	59.32	5,127	21.41	8.71	12.7
Apr-21	63,856	44,811	108,667	58.76	5,122	21.22	8.75	12.5
Mar-21	62,375	43,976	106,351	58.65	5,117	20.79	8.59	12.2
Feb-21	62,466	43,733	106,199	58.82	5,114	20.76	8.55	12.2
Jan-21	62,966	43,827	106,793	58.96	5,109	20.90	8.58	12.3
Dec-20	61,730	44,186	105,916	58.28	5,099	20.77	8.67	12.1
Nov-20	60,364	43,672	104,036	58.02	5,096	20.42	8.57	11.8
Oct-20	61,103	43,485	104,588	58.42	5,094	20.53	8.54	12.0
Sep-20	61,390	43,799	105,189	58.36	5,061	20.78	8.65	12.1
Aug-20	62,817	43,649	106,466	59.00	5,020	21.21	8.69	12.5
Jul-20	65,953	43,761	109,714	60.11	5,010	21.94	8.74	13.2
Jun-20	67,348	43,901	111,249	60.53	5,007	22.21	8.76	13.4

Equivalent pig kill					
				Tonnes	
Year	Week 46	Year to date	Annual total	Carcass weight	Average kg
2020-2021	12,161	552,509			
2019-2020	12,081	556,910	637,085	45,477	71.38
2018-2019	11,718	547,031	621,040	43,852	70.61
2017-2018	11,607	577,388	651,412	46,403	71.23
2016-2017	13,181	586,039	659,982	46,855	70.99

DISCLAIMER: Pork production data is provisional and may be revised without notice. All due care has been taken in preparing this information, however New Zealand Pork does not guarantee its accuracy. To the extent possible New Zealand Pork's liability is excluded, and persons acting in reliance on the information do so at their own risk. This information is licensed under the [Creative Commons Attribution-Noncommercial 3.0 New Zealand license](https://creativecommons.org/licenses/by-nc/3.0/)

WEEKLY PIGKILL REPORT

Week 46
Week ending 15th August 2021



NATIONAL PIG SLAUGHTER MONITOR PREPARED BY NEW ZEALAND PORK

PIG KILL FULL WEEK ENDING ¹ :		15/8/2021						Week 46		WEEKLY KILL COMPARISON				
		NUMBER OF CARCASSES	WEIGHT (KG)	AVG. WEIGHT (KG)	YEAR TO DATE WEIGHT TONNE	YEAR TO DATE WEIGHT LAST YEAR TONNE	% CHANGE IN WEIGHT COMPARED TO LAST YEAR	WHOLE CARCASSES CONDEMNED	TOTAL KILL ²	LAST WK	% CHANGE	CUMULATIVE YEAR TO DATE ³	CUMULATIVE YEAR TO DATE LAST YEAR	% CHANGE IN PIG NOS COMPARED TO LAST YEAR
PIGS < 50 KG	NTH IS	128	5,687	44.43	297	303	-2.2%	7	135	109	23.9%	6,812	7,382	-7.7%
	STH IS	173	6,053	34.99	375	376	-0.4%	0	173	187	-7.5%	11,215	10,699	4.8%
	NZ	301	11,740	39.00	671	680	-1.2%	7	308	296	4.1%	18,027	18,081	-0.3%
PIGS 50-64.9KG	NTH IS	1,093	65,445	59.88	3,100	3,550	-12.7%	0	1,093	1,107	-1.3%	52,034	59,763	-12.9%
	STH IS	1,890	113,430	60.02	4,759	4,308	10.5%	3	1,893	1,804	4.9%	79,496	72,097	10.3%
	NZ	2,983	178,875	59.96	7,860	7,858	0.0%	3	2,986	2,911	2.6%	131,530	131,860	-0.3%
PIGS 65-74.9 KG	NTH IS	2,096	146,887	70.08	5,810	5,805	0.1%	2	2,098	2,183	-3.9%	83,156	83,391	-0.3%
	STH IS	3,158	220,263	69.75	11,106	10,496	5.8%	16	3,174	3,457	-8.2%	159,302	150,070	6.2%
	NZ	5,254	367,150	69.88	16,916	16,301	3.8%	18	5,272	5,640	-6.5%	242,458	233,461	3.9%
PIGS 75-84.9 KG	NTH IS	738	58,235	78.91	2,783	2,736	1.7%	0	738	843	-12.5%	35,022	33,538	4.4%
	STH IS	1,750	138,259	79.01	6,317	7,128	-11.4%	0	1,750	1,707	2.5%	79,862	90,284	-11.5%
	NZ	2,488	196,494	78.98	9,100	9,864	-7.7%	0	2,488	2,550	-2.4%	114,884	123,822	-7.2%
PIGS 85-94.9 KG	NTH IS	83	7,355	88.61	274	161	70.5%	0	83	58	43.1%	3,120	1,791	74.2%
	STH IS	565	49,935	88.38	2,158	2,501	-13.7%	0	565	558	1.3%	24,372	28,245	-13.7%
	NZ	648	57,290	88.41	2,433	2,662	-8.6%	0	648	616	5.2%	27,492	30,036	-8.5%
PIGS >95 KG	NTH IS	14	1,354	96.71	17	12	41.5%	0	14	3	366.7%	174	120	45.0%
	STH IS	86	8,493	98.76	377	574	-34.3%	1	87	125	-30.4%	3,776	5,460	-30.8%
	NZ	100	9,847	98.47	394	586	-32.8%	1	101	128	-21.1%	3,950	5,580	-29.2%
TOTAL PRIME PIGS	NTH IS	4,152	284,963	68.63	12,282	12,568	-2.3%	9	4,161	4,303	-3.3%	180,318	185,985	-3.0%
	STH IS	7,622	536,433	70.38	25,092	25,382	-1.1%	20	7,642	7,838	-2.5%	358,023	356,855	0.3%
	NZ	11,774	821,396	69.76	37,374	37,950	-1.5%	29	11,803	12,141	-2.8%	538,341	542,840	-0.8%
CHOPPERS	NTH IS	64	9,191	143.61	362	273	32.3%	1	65	66	-1.5%	2,419	1,902	27.2%
	STH IS	292	40,349	138.18	1,543	1,590	-3.0%	1	293	243	20.6%	11,749	12,168	-3.4%
	NZ	356	49,540	139.16	1,904	1,863	2.2%	2	358	309	15.9%	14,168	14,070	0.7%
TOTAL	NZ	12,130	870,936	71.80	39,279	39,814	-1.3%	31	12,161	12,450	-2.3%	552,509	556,910	-0.8%

¹ Information gathered weekly from all abattoirs licensed to kill pigs.

² Includes carcasses (after removal of condemned parts) inspected and passed for human consumption, and whole carcasses condemned up to and at scales

³ Meat Year (1 October – 30 September) week to date

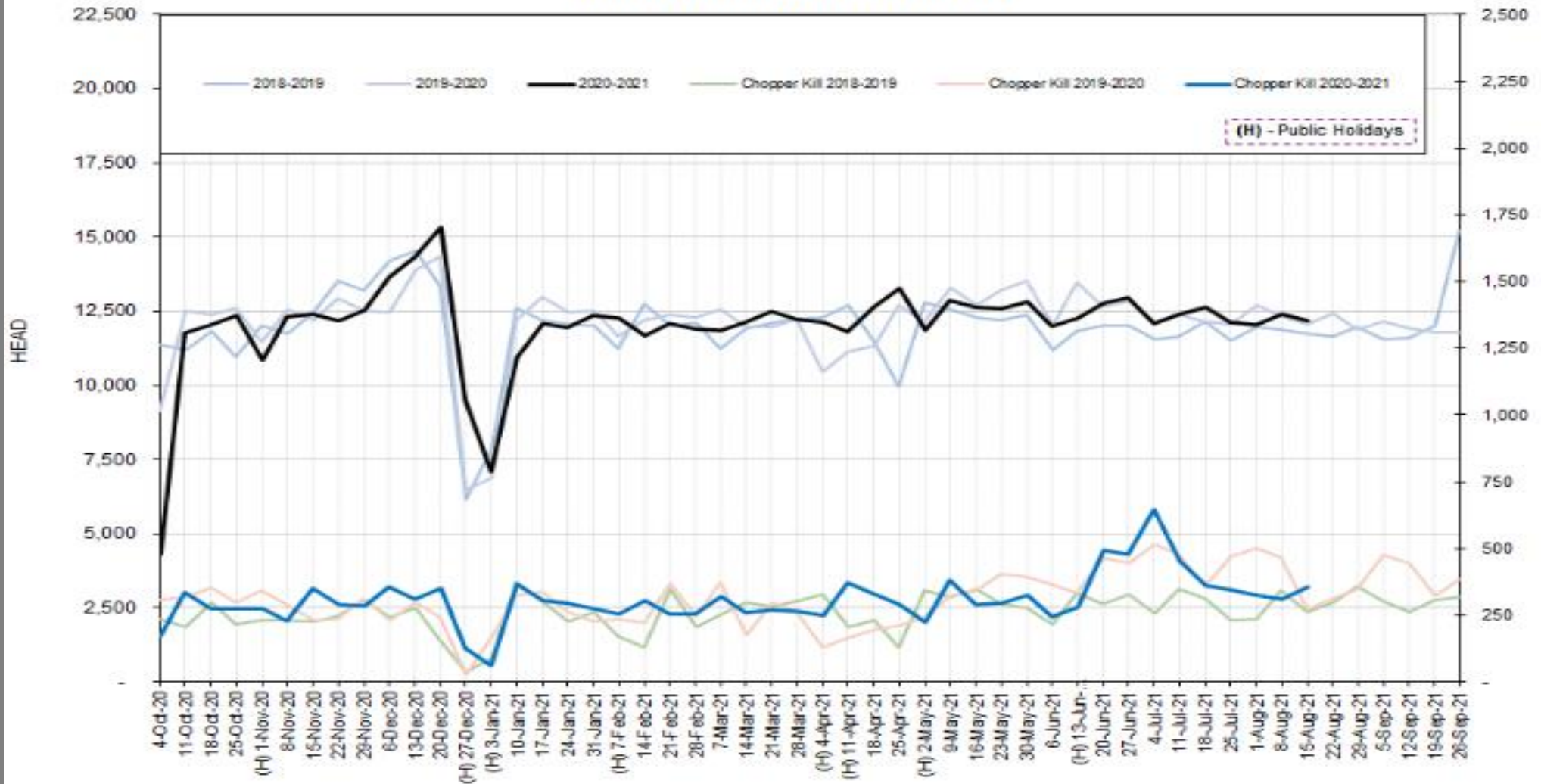
DISCLAIMER: Pork production data is provisional and may be revised without notice. All due care has been taken in preparing this information, however New Zealand Pork does not guarantee its accuracy. To the extent possible New Zealand Pork's liability is excluded, and persons acting in reliance on the information do so at their own risk. This information is licensed under the [Creative Commons Attribution-Noncommercial 3.0 New Zealand license](https://creativecommons.org/licenses/by-nc/3.0/)

WEEKLY PIGKILL REPORT

Week 46
Week ending 15th August 2021



TREND IN THE WEEKLY PIG KILL



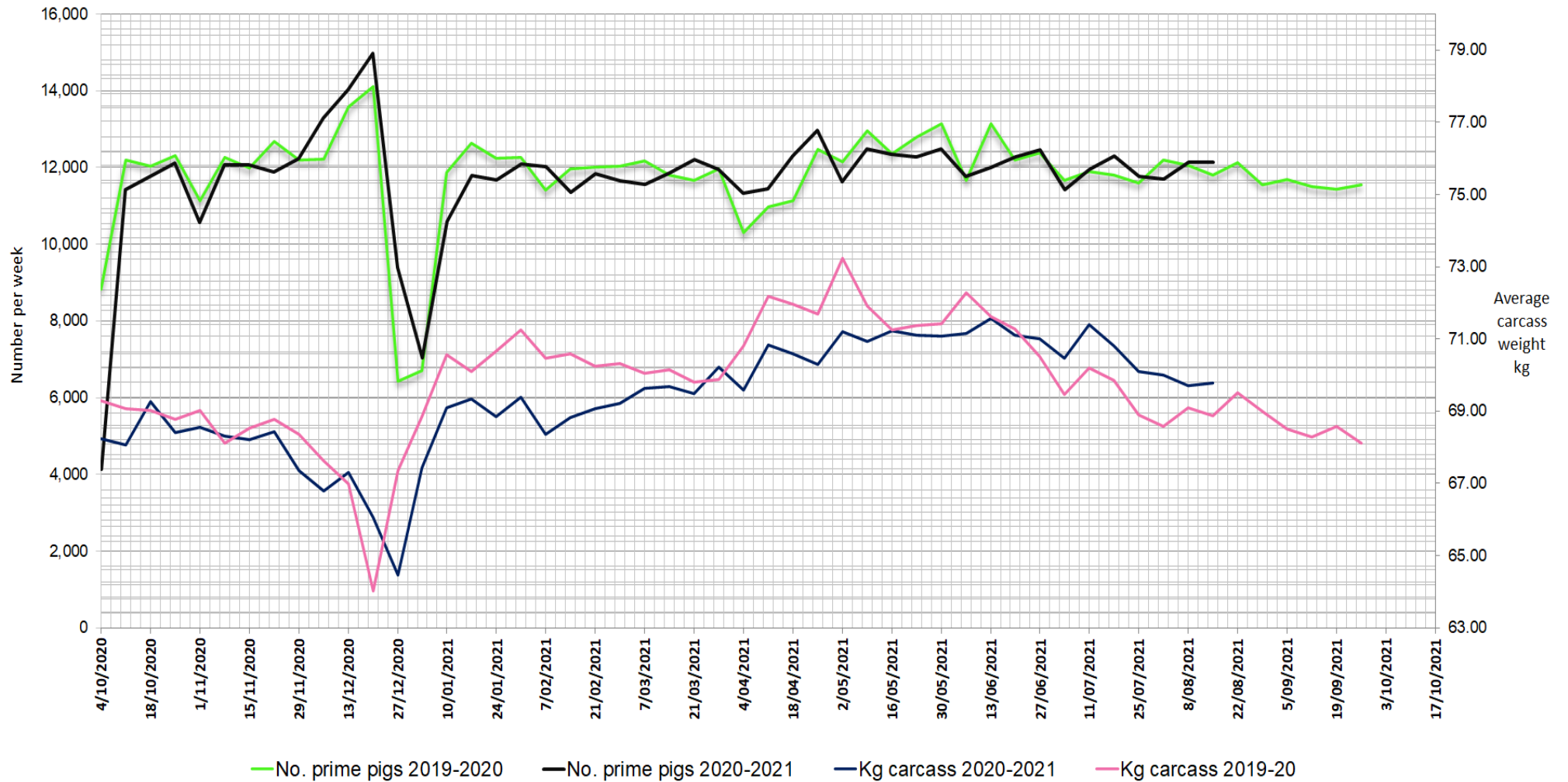
DISCLAIMER: Pork production data is provisional and may be revised without notice. All due care has been taken in preparing this information, however New Zealand Pork does not guarantee its accuracy. To the extent possible New Zealand Pork's liability is excluded, and persons acting in reliance on the information do so at their own risk. This information is licensed under the [Creative Commons Attribution-Noncommercial 3.0 New Zealand license](https://creativecommons.org/licenses/by-nc/3.0/)

WEEKLY PIGKILL REPORT

Week 46
Week ending 15th August 2021



WEEKLY PIG KILL DATA (Prime pigs)



DISCLAIMER: Pork production data is provisional and may be revised without notice. All due care has been taken in preparing this information, however New Zealand Pork does not guarantee its accuracy. To the extent possible New Zealand Pork's liability is excluded, and persons acting in reliance on the information do so at their own risk. This information is licensed under the [Creative Commons Attribution-Noncommercial 3.0 New Zealand license](#)