




# WEEKLY PIGKILL REPORT

Week 45  
Week ending 8<sup>th</sup> August 2021



AVG. WEIGHT (KG)	% CHANGE IN PIG # FROM PREVIOUS YR	PRIME PIG NUMBER FROM PREVIOUS WEEK	CONSUMPTION 100% NZPORK (KG)	IMPORTED PORK COMPARED JUNE 2020
WK45 20-21: 71.59	-0.8% 	Wk45: 12,141 	June21:8.65	- 345 (t CWE) 
Wk45 19-20: 71.14		Wk44: 11,698	May21: 8.71	

## MARKET COMMENTARY – previous commentary Week 44 (ending 1<sup>st</sup> Aug 2021)

Date	IMPORTED PROD Year ending (t CWE)	DOMESTIC PROD year ending (t CWE)	Tonnes TOTAL PROD	IMPORTS %	Estimated POPULATION (000)	TOTAL CONSUMPTION PER CAPITA	Kg 100% NZPork	Kg Pork imports
Jun-21	67,693	44,359	112,053	60.41	5,131	21.84	8.65	13.2
May-21	65,130	44,656	109,786	59.32	5,127	21.41	8.71	12.7
Apr-21	63,856	44,811	108,667	58.76	5,122	21.22	8.75	12.5
Mar-21	62,375	43,976	106,351	58.65	5,117	20.79	8.59	12.2
Feb-21	62,466	43,733	106,199	58.82	5,114	20.76	8.55	12.2
Jan-21	62,966	43,827	106,793	58.96	5,109	20.90	8.58	12.3
Dec-20	61,730	44,186	105,916	58.28	5,099	20.77	8.67	12.1
Nov-20	60,364	43,672	104,036	58.02	5,096	20.42	8.57	11.8
Oct-20	61,103	43,485	104,588	58.42	5,094	20.53	8.54	12.0
Sep-20	61,390	43,799	105,189	58.36	5,061	20.78	8.65	12.1
Aug-20	62,817	43,649	106,466	59.00	5,020	21.21	8.69	12.5
Jul-20	65,953	43,761	109,714	60.11	5,010	21.94	8.74	13.2
Jun-20	67,348	43,901	111,249	60.53	5,007	22.21	8.76	13.4

Equivalent pig kill				Tonnes	
Year	Week 45	Year to date	Annual total	Carcass weight	Average kg
2020-2021	12,450	540,348			
2019-2020	12,528	544,829	637,085	45,477	71.38
2018-2019	11,870	535,313	621,040	43,852	70.61
2017-2018	11,518	565,772	651,412	46,403	71.23
2016-2017	12,455	572,858	659,982	46,855	70.99

DISCLAIMER: Pork production data is provisional and may be revised without notice. All due care has been taken in preparing this information, however New Zealand Pork does not guarantee its accuracy. To the extent possible New Zealand Pork's liability is excluded, and persons acting in reliance on the information do so at their own risk. This information is licensed under the [Creative Commons Attribution-Noncommercial 3.0 New Zealand license](https://creativecommons.org/licenses/by-nc/3.0/)

# WEEKLY PIGKILL REPORT

Week 45  
Week ending 8<sup>th</sup> August 2021



## NATIONAL PIG SLAUGHTER MONITOR PREPARED BY NEW ZEALAND PORK

PIG KILL FULL WEEK ENDING <sup>1</sup> :		8/8/2021						Week 45		WEEKLY KILL COMPARISON				
		NUMBER OF CARCASSES	WEIGHT (KG)	AVG. WEIGHT (KG)	YEAR TO DATE WEIGHT TONNE	YEAR TO DATE WEIGHT LAST YEAR TONNE	% CHANGE IN WEIGHT COMPARED TO LAST YEAR	WHOLE CARCASSES CONDEMNED	TOTAL KILL <sup>2</sup>	LAST WK	% CHANGE	CUMULATIVE YEAR TO DATE <sup>3</sup>	CUMULATIVE YEAR TO DATE LAST YEAR	% CHANGE IN PIG NOS COMPARED TO LAST YEAR
PIGS < 50 KG	NTH IS	102	4,557	44.68	291	299	-2.7%	7	109	127	-14.2%	6,677	7,276	-8.2%
	STH IS	187	6,382	34.13	369	368	0.3%	0	187	192	-2.6%	11,042	10,440	5.8%
	NZ	<b>289</b>	<b>10,939</b>	<b>37.85</b>	<b>660</b>	<b>666</b>	<b>-1.0%</b>	<b>7</b>	<b>296</b>	<b>319</b>	<b>-7.2%</b>	<b>17,719</b>	<b>17,716</b>	<b>0.0%</b>
PIGS 50-64.9KG	NTH IS	1,107	66,280	59.87	3,035	3,472	-12.6%	0	1,107	1,101	0.5%	50,941	58,442	-12.8%
	STH IS	1,802	108,070	59.97	4,646	4,190	10.9%	2	1,804	1,576	14.5%	77,603	70,120	10.7%
	NZ	<b>2,909</b>	<b>174,350</b>	<b>59.93</b>	<b>7,681</b>	<b>7,662</b>	<b>0.2%</b>	<b>2</b>	<b>2,911</b>	<b>2,677</b>	<b>8.7%</b>	<b>128,544</b>	<b>128,562</b>	<b>0.0%</b>
PIGS 65-74.9 KG	NTH IS	2,177	152,037	69.84	5,664	5,696	-0.6%	6	2,183	2,026	7.7%	81,058	81,840	-1.0%
	STH IS	3,451	240,610	69.72	10,885	10,244	6.3%	6	3,457	3,242	6.6%	156,128	146,468	6.6%
	NZ	<b>5,628</b>	<b>392,647</b>	<b>69.77</b>	<b>16,549</b>	<b>15,941</b>	<b>3.8%</b>	<b>12</b>	<b>5,640</b>	<b>5,268</b>	<b>7.1%</b>	<b>237,186</b>	<b>228,308</b>	<b>3.9%</b>
PIGS 75-84.9 KG	NTH IS	843	66,487	78.87	2,725	2,669	2.1%	0	843	806	4.6%	34,284	32,701	4.8%
	STH IS	1,707	135,545	79.41	6,179	7,002	-11.8%	0	1,707	1,810	-5.7%	78,112	88,691	-11.9%
	NZ	<b>2,550</b>	<b>202,032</b>	<b>79.23</b>	<b>8,904</b>	<b>9,671</b>	<b>-7.9%</b>	<b>0</b>	<b>2,550</b>	<b>2,616</b>	<b>-2.5%</b>	<b>112,396</b>	<b>121,392</b>	<b>-7.4%</b>
PIGS 85-94.9 KG	NTH IS	58	5,067	87.36	267	157	70.0%	0	58	67	-13.4%	3,037	1,747	73.8%
	STH IS	558	49,405	88.54	2,108	2,463	-14.4%	0	558	643	-13.2%	23,807	27,819	-14.4%
	NZ	<b>616</b>	<b>54,472</b>	<b>88.43</b>	<b>2,375</b>	<b>2,620</b>	<b>-9.3%</b>	<b>0</b>	<b>616</b>	<b>710</b>	<b>-13.2%</b>	<b>26,844</b>	<b>29,566</b>	<b>-9.2%</b>
PIGS >95 KG	NTH IS	3	298	99.33	16	12	32.4%	0	3	3	0.0%	160	118	35.6%
	STH IS	125	12,391	99.13	368	565	-34.8%	0	125	105	19.0%	3,689	5,371	-31.3%
	NZ	<b>128</b>	<b>12,689</b>	<b>99.13</b>	<b>384</b>	<b>577</b>	<b>-33.4%</b>	<b>0</b>	<b>128</b>	<b>108</b>	<b>18.5%</b>	<b>3,849</b>	<b>5,489</b>	<b>-29.9%</b>
TOTAL PRIME PIGS	NTH IS	4,290	294,726	68.70	11,997	12,305	-2.5%	13	4,303	4,130	4.2%	176,157	182,124	-3.3%
	STH IS	7,830	552,403	70.55	24,556	24,832	-1.1%	8	7,838	7,568	3.6%	350,381	348,909	0.4%
	NZ	<b>12,120</b>	<b>847,129</b>	<b>69.90</b>	<b>36,553</b>	<b>37,137</b>	<b>-1.6%</b>	<b>21</b>	<b>12,141</b>	<b>11,698</b>	<b>3.8%</b>	<b>526,538</b>	<b>531,033</b>	<b>-0.8%</b>
CHOPPERS	NTH IS	66	9,455	143.26	353	268	31.3%	0	66	66	0.0%	2,354	1,866	26.2%
	STH IS	243	33,157	136.45	1,502	1,560	-3.7%	0	243	261	-6.9%	11,456	11,930	-4.0%
	NZ	<b>309</b>	<b>42,612</b>	<b>137.90</b>	<b>1,855</b>	<b>1,829</b>	<b>1.4%</b>	<b>0</b>	<b>309</b>	<b>327</b>	<b>-5.5%</b>	<b>13,810</b>	<b>13,796</b>	<b>0.1%</b>
TOTAL	NZ	<b>12,429</b>	<b>889,741</b>	<b>71.59</b>	<b>38,408</b>	<b>38,966</b>	<b>-1.4%</b>	<b>21</b>	<b>12,450</b>	<b>12,025</b>	<b>3.5%</b>	<b>540,348</b>	<b>544,829</b>	<b>-0.8%</b>

<sup>1</sup> Information gathered weekly from all abattoirs licensed to kill pigs.

<sup>2</sup> Includes carcasses (after removal of condemned parts) inspected and passed for human consumption, and whole carcasses condemned up to and at scales

<sup>3</sup> Meat Year (1 October – 30 September) week to date

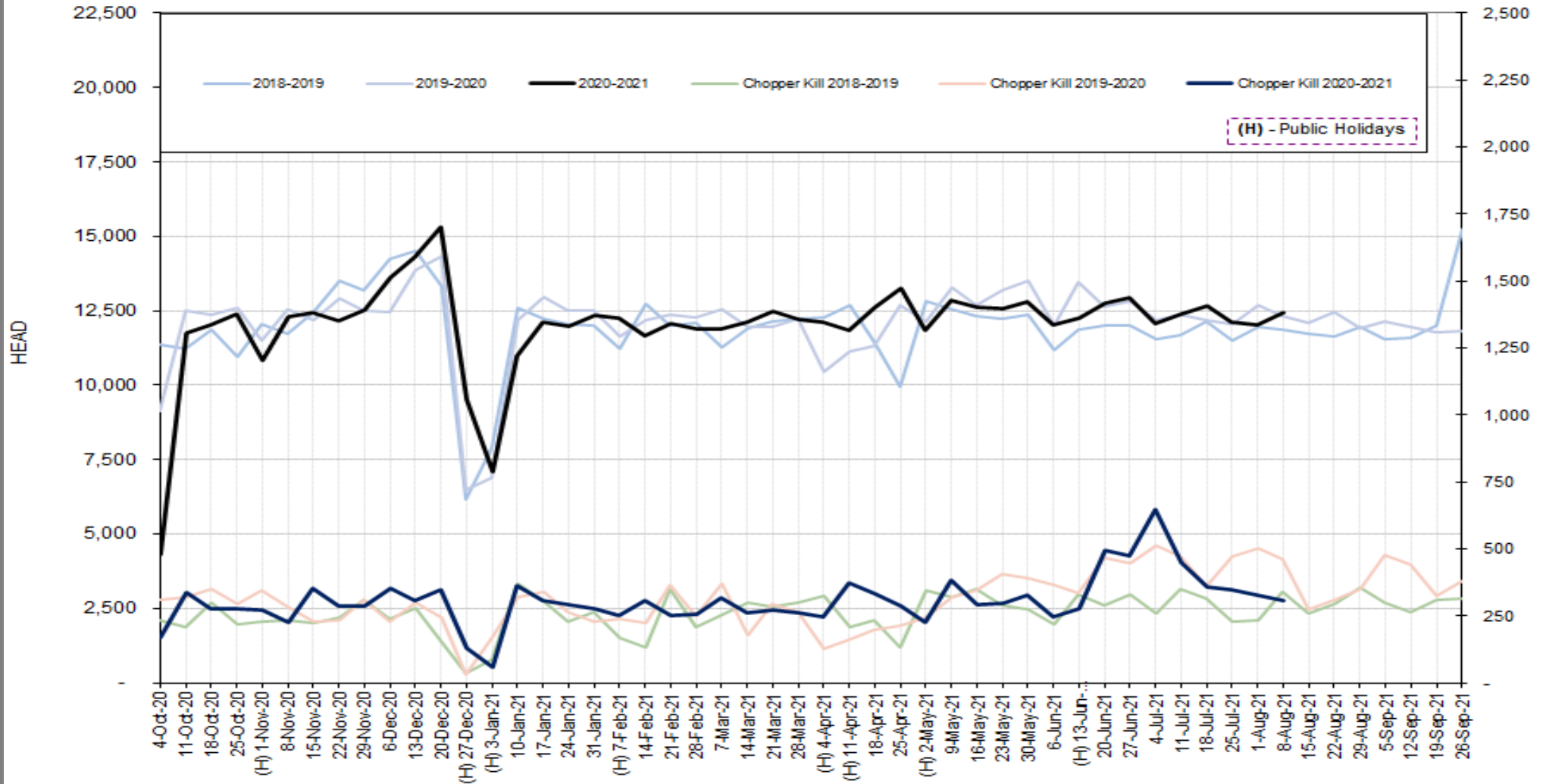
DISCLAIMER: Pork production data is provisional and may be revised without notice. All due care has been taken in preparing this information, however New Zealand Pork does not guarantee its accuracy. To the extent possible New Zealand Pork's liability is excluded, and persons acting in reliance on the information do so at their own risk. This information is licensed under the [Creative Commons Attribution-Noncommercial 3.0 New Zealand license](https://creativecommons.org/licenses/by-nc/3.0/)

# WEEKLY PIGKILL REPORT

Week 45  
Week ending 8<sup>th</sup> August 2021



### TREND IN THE WEEKLY PIG KILL



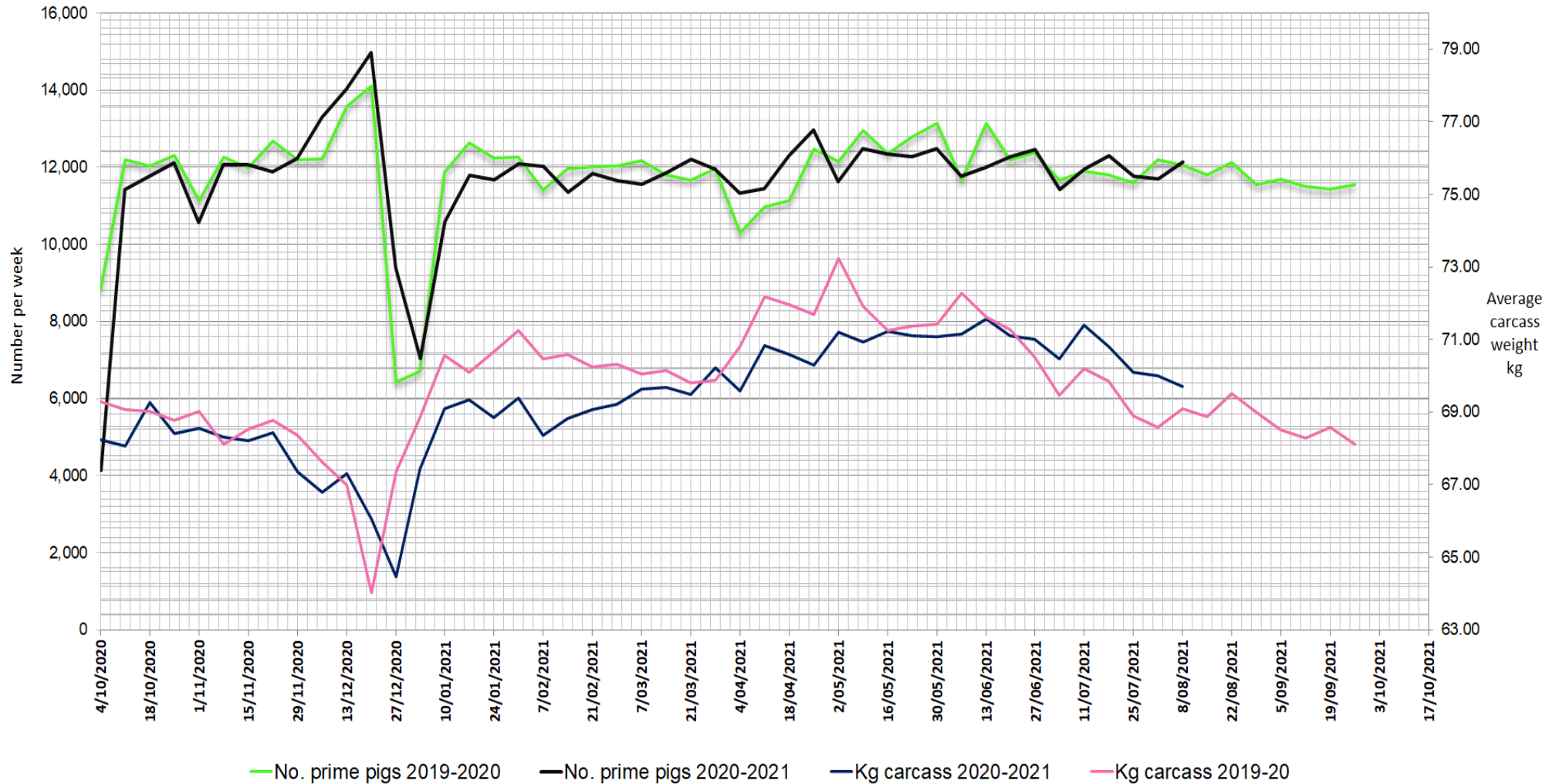
DISCLAIMER: Pork production data is provisional and may be revised without notice. All due care has been taken in preparing this information, however New Zealand Pork does not guarantee its accuracy. To the extent possible New Zealand Pork's liability is excluded, and persons acting in reliance on the information do so at their own risk. This information is licensed under the [Creative Commons Attribution-Noncommercial 3.0 New Zealand license](https://creativecommons.org/licenses/by-nc/3.0/)

# WEEKLY PIGKILL REPORT

Week 45  
Week ending 8<sup>th</sup> August 2021



## WEEKLY PIG KILL DATA (Prime pigs)



DISCLAIMER: Pork production data is provisional and may be revised without notice. All due care has been taken in preparing this information, however New Zealand Pork does not guarantee its accuracy. To the extent possible New Zealand Pork's liability is excluded, and persons acting in reliance on the information do so at their own risk. This information is licensed under the [Creative Commons Attribution-Noncommercial 3.0 New Zealand license](https://creativecommons.org/licenses/by-nc/3.0/)