

# WEEKLY PIGKILL REPORT

Week 44  
Week ending 1<sup>st</sup> August 2021



AVG. WEIGHT (KG)		% CHANGE IN PIG # FROM PREVIOUS YR	PRIME PIG NUMBER FROM PREVIOUS WEEK	CONSUMPTION 100% NZPORK (KG)	IMPORTED PORK COMPARED JUNE 2020
WK44 20-21: 71.93		-0.9%	Wk44: 11,698	June21:8.65	- 345 (t CWE)
Wk44 19-20: 70.22			WK43: 11,778	May21: 8.71	

## MARKET COMMENTARY – previous commentary Week 40 (ending 4<sup>th</sup> July 2021)

### WHOLESALE

Contacts reported 1-2 shifts (10-20cents) increase in their pork pricing schedule in July.

For July, some reported the market as sluggish to improving. Sluggishness in the market is attributed to school holidays and living costs increasing across the board with comments like, the market is “tough”, “still sluggish with school holidays”, “increase of living costs are going up across the board”, “discretion spending is a little tighter, meat often gets dropped first”. Factors contributing to improvement is attributed to the cost of red meat and slight reduction of pigs being slaughtered. Supermarkets are also running promotions on pork shoulders and running out of stock. “Market is improving on back of red meat being dearer”, “availability of red meat making pork a little more sort after”, “number of pigs coming to slaughter a little lower”, “supermarkets running out of promotional product e.g., shoulders”, “hoping [supermarket promotions] will increase the pork schedule a bit more”. Sales for pork belly have been “strong”. Shoulder meat has been strong for this time of year, “none [shoulder meat] in the freezer which is unusual for this time of year”.

### RETAIL

The pork market is stable with comments from retail stating, “no change”, “static”, “It has not changed to last month”.

### IMPORTS

There has been a little more activity with imports as ‘Europe inventories are a little higher’. This has made pricing more attractive to NZ to receive shipments in 3-4 months. Logistics has seen a ‘big bubble’ of product arrive to our shores. It’s thought that this big increase will “even out” and then “get hard again” as some vessels are omitting ports from their drop off zones, resulting in product not landing “where it wanted”. It’s believed going forward shipping will go back to becoming irregular.

# WEEKLY PIGKILL REPORT

Week 44  
Week ending 1<sup>st</sup> August 2021



**NOTE:** When calculating **May 2021** consumption data last month, the calculation for total NZ pigs killed in May was missing 1 days kill from the total. The relevant figures presented in the line **'May 21'** have been amended to reflect this extra day's kill for the month of May. Apologies for any inconvenience this error may have caused.

Date	IMPORTED PROD Year ending (t CWE)	DOMESTIC PROD year ending (t CWE)	Tonnes TOTAL PROD	IMPORTS %	Estimated POPULATION (000)	TOTAL CONSUMPTION PER CAPITA	Kg 100% NZPork	Kg Pork imports
Jun-21	67,693	44,359	112,053	60.41	5,131	21.84	8.65	13.2
May-21	65,130	44,656	109,786	59.32	5,127	21.41	8.71	12.7
Apr-21	63,856	44,811	108,667	58.76	5,122	21.22	8.75	12.5
Mar-21	62,375	43,976	106,351	58.65	5,117	20.79	8.59	12.2
Feb-21	62,466	43,733	106,199	58.82	5,114	20.76	8.55	12.2
Jan-21	62,966	43,827	106,793	58.96	5,109	20.90	8.58	12.3
Dec-20	61,730	44,186	105,916	58.28	5,099	20.77	8.67	12.1
Nov-20	60,364	43,672	104,036	58.02	5,096	20.42	8.57	11.8
Oct-20	61,103	43,485	104,588	58.42	5,094	20.53	8.54	12.0
Sep-20	61,390	43,799	105,189	58.36	5,061	20.78	8.65	12.1
Aug-20	62,817	43,649	106,466	59.00	5,020	21.21	8.69	12.5
Jul-20	65,953	43,761	109,714	60.11	5,010	21.94	8.74	13.2
Jun-20	67,348	43,901	111,249	60.53	5,007	22.21	8.76	13.4

Equivalent pig kill					
				Tonnes	
Year	Week 44	Year to date	Annual total	Carcass weight	Average kg
2020-2021	12,025	527,898			
2019-2020	12,692	532,496	637085	45477	71.38
2018-2019	11,948	523,443	621,040	43,852	70.61
2014-2015	12,320	527,652	625,890	44,660	71.35
2015-2016	12,341	529,064	625,498	44,201	70.67

DISCLAIMER: Pork production data is provisional and may be revised without notice. All due care has been taken in preparing this information, however New Zealand Pork does not guarantee its accuracy. To the extent possible New Zealand Pork's liability is excluded, and persons acting in reliance on the information do so at their own risk. This information is licensed under the [Creative Commons Attribution-Noncommercial 3.0 New Zealand license](https://creativecommons.org/licenses/by-nc/3.0/)

# WEEKLY PIGKILL REPORT

Week 44  
Week ending 1<sup>st</sup> August 2021



## NATIONAL PIG SLAUGHTER MONITOR PREPARED BY NEW ZEALAND PORK

PIG KILL FULL WEEK ENDING <sup>1</sup> :		1/8/2021							Week 44			WEEKLY KILL COMPARISON		
		NUMBER OF CARCASSES	WEIGHT (KG)	AVG. WEIGHT (KG)	YEAR TO DATE WEIGHT TONNE	YEAR TO DATE WEIGHT LAST YEAR TONNE	% CHANGE IN WEIGHT COMPARED TO LAST YEAR	WHOLE CARCASSES CONDEMNED	TOTAL KILL <sup>2</sup>	LAST WK	% CHANGE	CUMULATIVE YEAR TO DATE <sup>3</sup>	CUMULATIVE YEAR TO DATE LAST YEAR	% CHANGE IN PIG NOS COMPARED TO LAST YEAR
PIGS < 50 KG	NTH IS	123	5,448	44.29	286	294	-2.6%	4	127	128	-0.8%	6,568	7,166	-8.3%
	STH IS	192	5,847	30.45	363	360	0.8%	0	192	177	8.5%	10,855	10,198	6.4%
	NZ	<b>315</b>	<b>11,295</b>	<b>35.86</b>	<b>649</b>	<b>654</b>	<b>-0.8%</b>	<b>4</b>	<b>319</b>	<b>305</b>	<b>4.6%</b>	<b>17,423</b>	<b>17,364</b>	<b>0.3%</b>
PIGS 50-64.9KG	NTH IS	1,101	65,582	59.57	2,969	3,388	-12.4%	0	1,101	883	24.7%	49,834	57,028	-12.6%
	STH IS	1,575	94,245	59.84	4,538	4,079	11.2%	1	1,576	1,720	-8.4%	75,799	68,273	11.0%
	NZ	<b>2,676</b>	<b>159,827</b>	<b>59.73</b>	<b>7,507</b>	<b>7,467</b>	<b>0.5%</b>	<b>1</b>	<b>2,677</b>	<b>2,603</b>	<b>2.8%</b>	<b>125,633</b>	<b>125,301</b>	<b>0.3%</b>
PIGS 65-74.9 KG	NTH IS	2,026	141,594	69.89	5,512	5,572	-1.1%	0	2,026	1,823	11.1%	78,875	80,051	-1.5%
	STH IS	3,236	226,203	69.90	10,645	10,016	6.3%	6	3,242	3,534	-8.3%	152,671	143,190	6.6%
	NZ	<b>5,262</b>	<b>367,797</b>	<b>69.90</b>	<b>16,156</b>	<b>15,587</b>	<b>3.7%</b>	<b>6</b>	<b>5,268</b>	<b>5,357</b>	<b>-1.7%</b>	<b>231,546</b>	<b>223,241</b>	<b>3.7%</b>
PIGS 75-84.9 KG	NTH IS	805	63,217	78.53	2,658	2,605	2.1%	1	806	906	-11.0%	33,441	31,918	4.8%
	STH IS	1,810	143,101	79.06	6,043	6,856	-11.9%	0	1,810	1,945	-6.9%	76,405	86,839	-12.0%
	NZ	<b>2,615</b>	<b>206,318</b>	<b>78.90</b>	<b>8,702</b>	<b>9,461</b>	<b>-8.0%</b>	<b>1</b>	<b>2,616</b>	<b>2,851</b>	<b>-8.2%</b>	<b>109,846</b>	<b>118,757</b>	<b>-7.5%</b>
PIGS 85-94.9 KG	NTH IS	67	5,890	87.91	262	152	72.5%	0	67	97	-30.9%	2,979	1,687	76.6%
	STH IS	643	57,049	88.72	2,059	2,423	-15.0%	0	643	503	27.8%	23,249	27,361	-15.0%
	NZ	<b>710</b>	<b>62,939</b>	<b>88.65</b>	<b>2,321</b>	<b>2,575</b>	<b>-9.9%</b>	<b>0</b>	<b>710</b>	<b>600</b>	<b>18.3%</b>	<b>26,228</b>	<b>29,048</b>	<b>-9.7%</b>
PIGS >95 KG	NTH IS	3	296	98.67	15	12	29.9%	0	3	1	200.0%	157	118	33.1%
	STH IS	105	10,480	99.81	356	561	-36.6%	0	105	61	72.1%	3,564	5,335	-33.2%
	NZ	<b>108</b>	<b>10,776</b>	<b>99.78</b>	<b>371</b>	<b>573</b>	<b>-35.2%</b>	<b>0</b>	<b>108</b>	<b>62</b>	<b>74.2%</b>	<b>3,721</b>	<b>5,453</b>	<b>-31.8%</b>
TOTAL PRIME PIGS	NTH IS	4,125	282,027	68.37	11,702	12,022	-2.7%	5	4,130	3,838	7.6%	171,854	177,968	-3.4%
	STH IS	7,561	536,925	71.01	24,003	24,295	-1.2%	7	7,568	7,940	-4.7%	342,543	341,196	0.4%
	NZ	<b>11,686</b>	<b>818,952</b>	<b>70.08</b>	<b>35,706</b>	<b>36,317</b>	<b>-1.7%</b>	<b>12</b>	<b>11,698</b>	<b>11,778</b>	<b>-0.7%</b>	<b>514,397</b>	<b>519,164</b>	<b>-0.9%</b>
CHOPPERS	NTH IS	66	10,433	158.08	343	262	30.9%	0	66	43	53.5%	2,288	1,825	25.4%
	STH IS	261	34,695	132.93	1,469	1,511	-2.8%	0	261	304	-14.1%	11,213	11,507	-2.6%
	NZ	<b>327</b>	<b>45,128</b>	<b>138.01</b>	<b>1,812</b>	<b>1,774</b>	<b>2.2%</b>	<b>0</b>	<b>327</b>	<b>347</b>	<b>-5.8%</b>	<b>13,501</b>	<b>13,332</b>	<b>1.3%</b>
TOTAL	NZ	<b>12,013</b>	<b>864,080</b>	<b>71.93</b>	<b>37,518</b>	<b>38,090</b>	<b>-1.5%</b>	<b>12</b>	<b>12,025</b>	<b>12,125</b>	<b>-0.8%</b>	<b>527,898</b>	<b>532,496</b>	<b>-0.9%</b>

<sup>1</sup> Information gathered weekly from all abattoirs licensed to kill pigs.

<sup>2</sup> Includes carcasses (after removal of condemned parts) inspected and passed for human consumption, and whole carcasses condemned up to and at scales

<sup>3</sup> Meat Year (1 October – 30 September) week to date

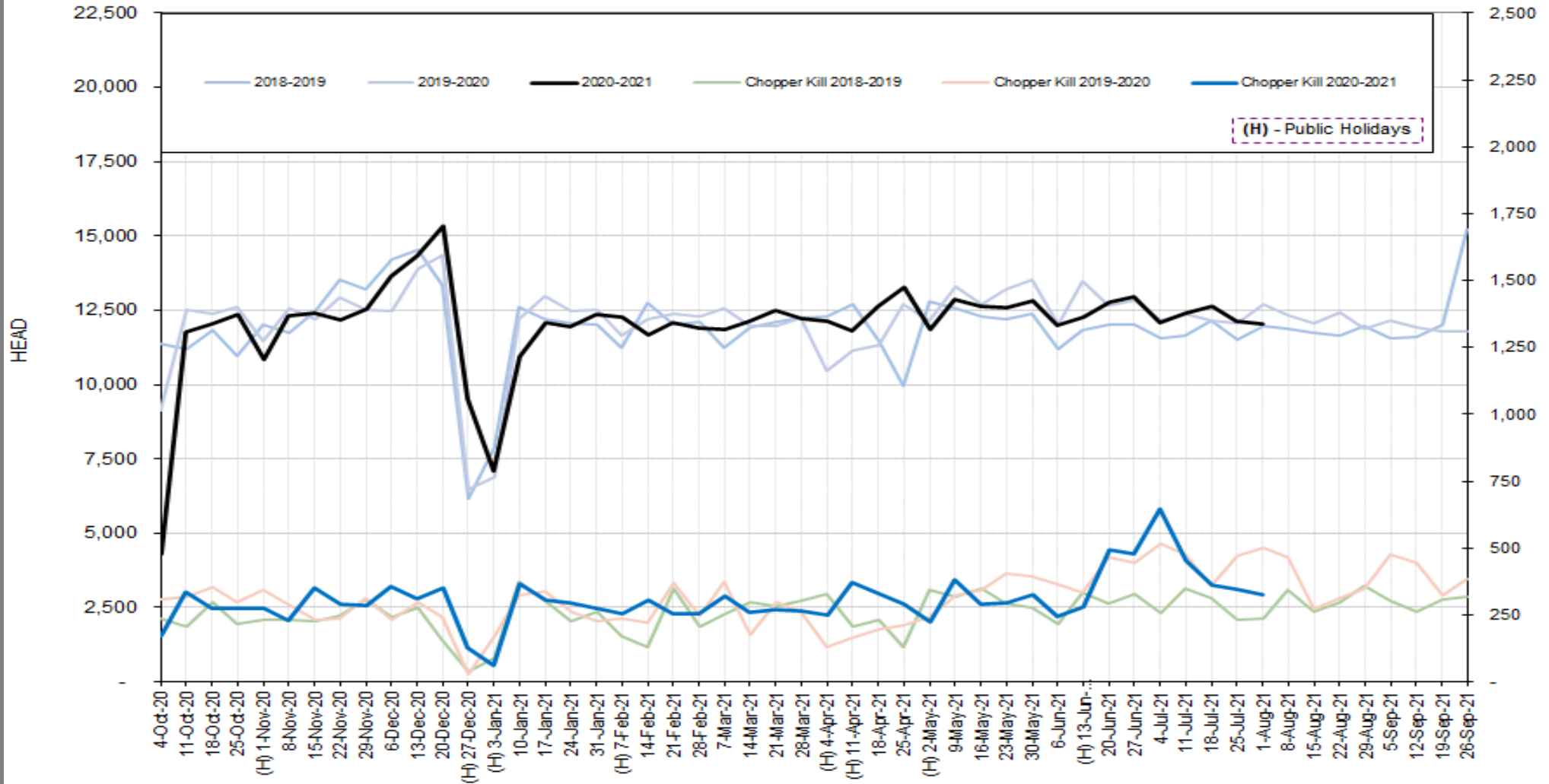
DISCLAIMER: Pork production data is provisional and may be revised without notice. All due care has been taken in preparing this information, however New Zealand Pork does not guarantee its accuracy. To the extent possible New Zealand Pork's liability is excluded, and persons acting in reliance on the information do so at their own risk. This information is licensed under the [Creative Commons Attribution-Noncommercial 3.0 New Zealand license](https://creativecommons.org/licenses/by-nc/3.0/)

# WEEKLY PIGKILL REPORT

Week 44  
Week ending 1<sup>st</sup> August 2021



### TREND IN THE WEEKLY PIG KILL



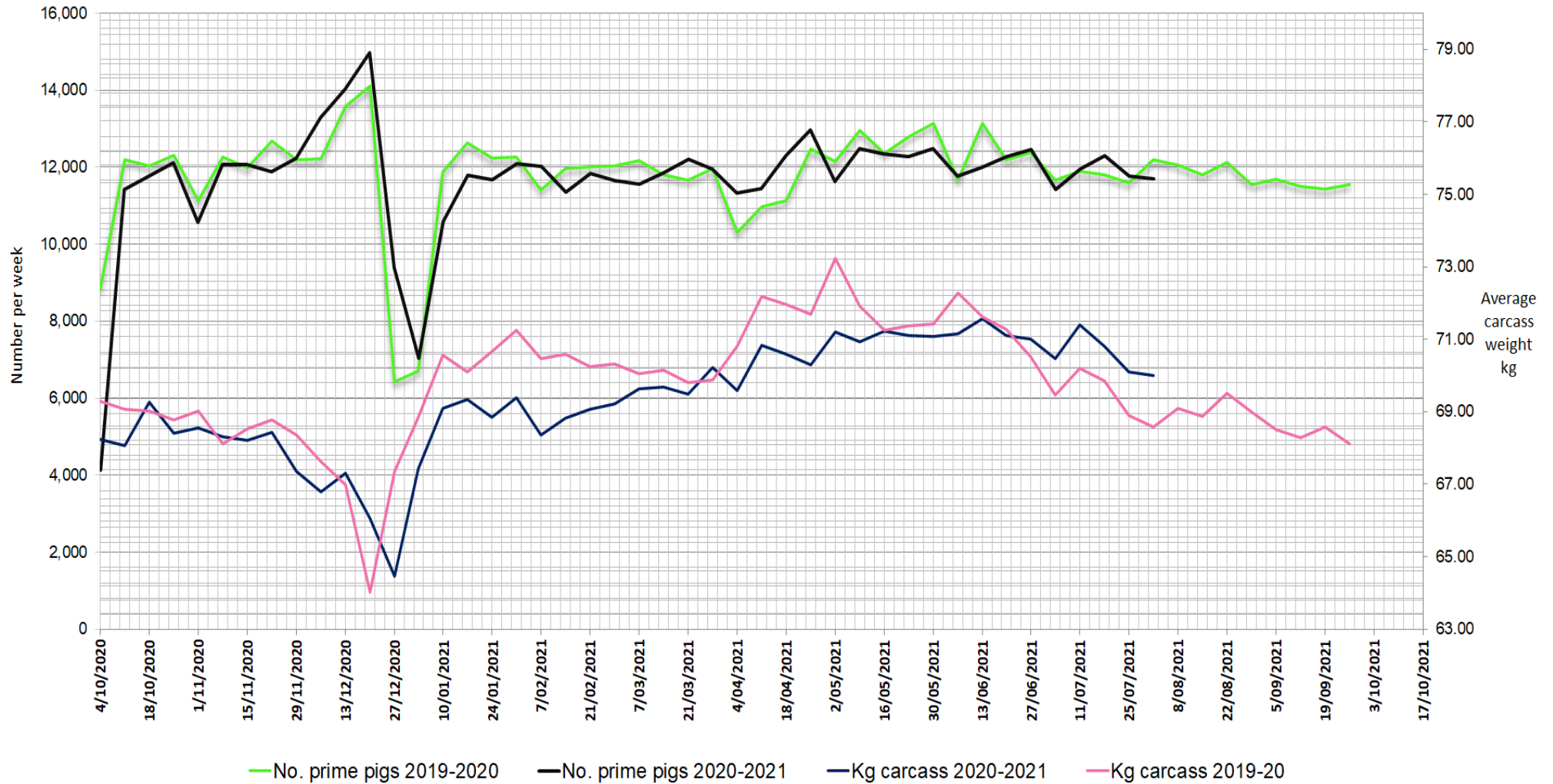
DISCLAIMER: Pork production data is provisional and may be revised without notice. All due care has been taken in preparing this information, however New Zealand Pork does not guarantee its accuracy. To the extent possible New Zealand Pork's liability is excluded, and persons acting in reliance on the information do so at their own risk. This information is licensed under the [Creative Commons Attribution-Noncommercial 3.0 New Zealand license](https://creativecommons.org/licenses/by-nc/3.0/)

# WEEKLY PIGKILL REPORT

Week 44  
Week ending 1<sup>st</sup> August 2021



## WEEKLY PIG KILL DATA (Prime pigs)



DISCLAIMER: Pork production data is provisional and may be revised without notice. All due care has been taken in preparing this information, however New Zealand Pork does not guarantee its accuracy. To the extent possible New Zealand Pork's liability is excluded, and persons acting in reliance on the information do so at their own risk. This information is licensed under the [Creative Commons Attribution-Noncommercial 3.0 New Zealand license](https://creativecommons.org/licenses/by-nc/3.0/)