

WEEKLY PIGKILL REPORT

Week 42
Week ending 18th July 2021



AVG. WEIGHT (KG)		% CHANGE IN PIG # FROM PREVIOUS YR		PRIME PIG NUMBER FROM PREVIOUS WEEK		CONSUMPTION 100% NZPORK (KG)		IMPORTED PORK COMPARED MAY 2020
Wk42 20-21: 72.62		-0.8%		Wk42: 12,291		May21: 8.68		- 2,888 (t CWE)
Wk42 19-20: 71.59				Wk41: 11,953		Apr21: 8.75		

MARKET COMMENTARY – previous commentary Week 40 (ending 4th July 2021)

Date	IMPORTED PROD Year ending (t CWE)	DOMESTIC PROD year ending (t CWE)	Tonnes TOTAL PROD	IMPORTS %	Estimated POPULATION (000)	TOTAL CONSUMPTION PER CAPITA	Kg 100% NZPork	Kg Pork imports
May-21	65,130	44,518	109,649	59.40	5,127	21.39	8.68	12.7
Apr-21	63,856	44,811	108,667	58.76	5,122	21.22	8.75	12.5
Mar-21	62,375	43,976	106,351	58.65	5,117	20.79	8.59	12.2
Feb-21	62,466	43,733	106,199	58.82	5,114	20.76	8.55	12.2
Jan-21	62,966	43,827	106,793	58.96	5,109	20.90	8.58	12.3
Dec-20	61,730	44,186	105,916	58.28	5,099	20.77	8.67	12.1
Nov-20	60,364	43,672	104,036	58.02	5,096	20.42	8.57	11.8
Oct-20	61,103	43,485	104,588	58.42	5,094	20.53	8.54	12.0
Sep-20	61,390	43,799	105,189	58.36	5,061	20.78	8.65	12.1
Aug-20	62,817	43,649	106,466	59.00	5,020	21.21	8.69	12.5
Jul-20	65,953	43,761	109,714	60.11	5,010	21.94	8.74	13.2
Jun-20	67,348	43,901	111,249	60.53	5,007	22.21	8.76	13.4
May-20	68,018	43,136	111,154	61.19	4,996	22.23	8.63	13.6

Equivalent pig kill					
Year	Week 42	Year to date	Annual total	Carcass weight	Average kg
2020-2021	12,651	503,748			
2019-2020	12,167	507,745	637,085	45,477	71.38
2018-2019	12,143	499,973	621,040	43,852	70.61
2017-2018	11,908	528,999	651,412	46,403	71.23
2016-2017	12,588	535,563	659,982	46,855	70.99

DISCLAIMER: Pork production data is provisional and may be revised without notice. All due care has been taken in preparing this information, however New Zealand Pork does not guarantee its accuracy. To the extent possible New Zealand Pork's liability is excluded, and persons acting in reliance on the information do so at their own risk. This information is licensed under the [Creative Commons Attribution-Noncommercial 3.0 New Zealand license](https://creativecommons.org/licenses/by-nc/3.0/)

WEEKLY PIGKILL REPORT

Week 42
Week ending 18th July 2021



NATIONAL PIG SLAUGHTER MONITOR PREPARED BY NEW ZEALAND PORK

PIG KILL FULL WEEK ENDING ¹ :		18/7/2021						Week 42		WEEKLY KILL COMPARISON				
		NUMBER OF CARCASSES	WEIGHT (KG)	AVG. WEIGHT (KG)	YEAR TO DATE WEIGHT TONNE	YEAR TO DATE WEIGHT LAST YEAR TONNE	% CHANGE IN WEIGHT COMPARED TO LAST YEAR	WHOLE CARCASSES CONDEMNED	TOTAL KILL ²	LAST WK	% CHANGE	CUMULATIVE YEAR TO DATE ³	CUMULATIVE YEAR TO DATE LAST YEAR	% CHANGE IN PIG NOS COMPARED TO LAST YEAR
PIGS < 50 KG	NTH IS	134	5,878	43.87	275	284	-2.9%	1	135	133	1.5%	6,313	6,922	-8.8%
	STH IS	184	6,562	35.66	351	340	3.2%	0	184	170	8.2%	10,486	9,621	9.0%
	NZ	318	12,440	39.12	626	623	0.4%	1	319	303	5.3%	16,799	16,543	1.5%
PIGS 50-64.9KG	NTH IS	1,124	66,914	59.53	2,850	3,215	-11.3%	0	1,124	1,079	4.2%	47,850	54,124	-11.6%
	STH IS	1,659	99,230	59.81	4,341	3,865	12.3%	2	1,661	1,553	7.0%	72,503	64,683	12.1%
	NZ	2,783	166,144	59.70	7,191	7,080	1.6%	2	2,785	2,632	5.8%	120,353	118,807	1.3%
PIGS 65-74.9 KG	NTH IS	1,953	136,756	70.02	5,242	5,309	-1.3%	0	1,953	2,008	-2.7%	75,026	76,291	-1.7%
	STH IS	3,387	236,693	69.88	10,172	9,543	6.6%	10	3,397	2,995	13.4%	145,895	136,421	6.9%
	NZ	5,340	373,449	69.93	15,414	14,852	3.8%	10	5,350	5,003	6.9%	220,921	212,712	3.9%
PIGS 75-84.9 KG	NTH IS	848	70,820	83.51	2,524	2,475	2.0%	2	850	799	6.4%	31,729	30,316	4.7%
	STH IS	2,242	180,251	80.40	5,746	6,583	-12.7%	0	2,242	2,235	0.3%	72,650	83,380	-12.9%
	NZ	3,090	251,071	81.25	8,270	9,058	-8.7%	2	3,092	3,034	1.9%	104,379	113,696	-8.2%
PIGS 85-94.9 KG	NTH IS	68	5,956	87.59	247	144	71.7%	0	68	114	-40.4%	2,815	1,599	76.0%
	STH IS	586	52,229	89.13	1,958	2,362	-17.1%	0	586	732	-19.9%	22,103	26,677	-17.1%
	NZ	654	58,185	88.97	2,205	2,506	-12.0%	0	654	846	-22.7%	24,918	28,276	-11.9%
PIGS >95 KG	NTH IS	0	0	98.90	15	12	29.8%	0	0	2	-100.0%	153	115	33.0%
	STH IS	91	9,000	98.90	339	551	-38.4%	0	91	133	-31.6%	3,398	5,235	-35.1%
	NZ	91	9,000	98.90	354	563	-37.0%	0	91	135	-32.6%	3,551	5,350	-33.6%
TOTAL PRIME PIGS	NTH IS	4,127	286,324	69.38	11,154	11,438	-2.5%	3	4,130	4,135	-0.1%	163,886	169,367	-3.2%
	STH IS	8,149	583,965	71.66	22,907	23,244	-1.5%	12	8,161	7,818	4.4%	327,035	326,017	0.3%
	NZ	12,276	870,289	70.89	34,061	34,682	-1.8%	15	12,291	11,953	2.8%	490,921	495,384	-0.9%
CHOPPERS	NTH IS	52	7,618	146.50	326	248	31.7%	0	52	49	6.1%	2,179	1,729	26.0%
	STH IS	304	39,406	129.63	1,396	1,414	-1.2%	4	308	402	-23.4%	10,648	10,632	0.2%
	NZ	356	47,024	132.09	1,722	1,661	3.7%	4	360	451	-20.2%	12,827	12,361	3.8%
TOTAL	NZ	12,632	917,313	72.62	35,783	36,343	-1.5%	19	12,651	12,404	2.0%	503,748	507,745	-0.8%

¹ Information gathered weekly from all abattoirs licensed to kill pigs.

² Includes carcasses (after removal of condemned parts) inspected and passed for human consumption, and whole carcasses condemned up to and at scales

³ Meat Year (1 October – 30 September) week to date

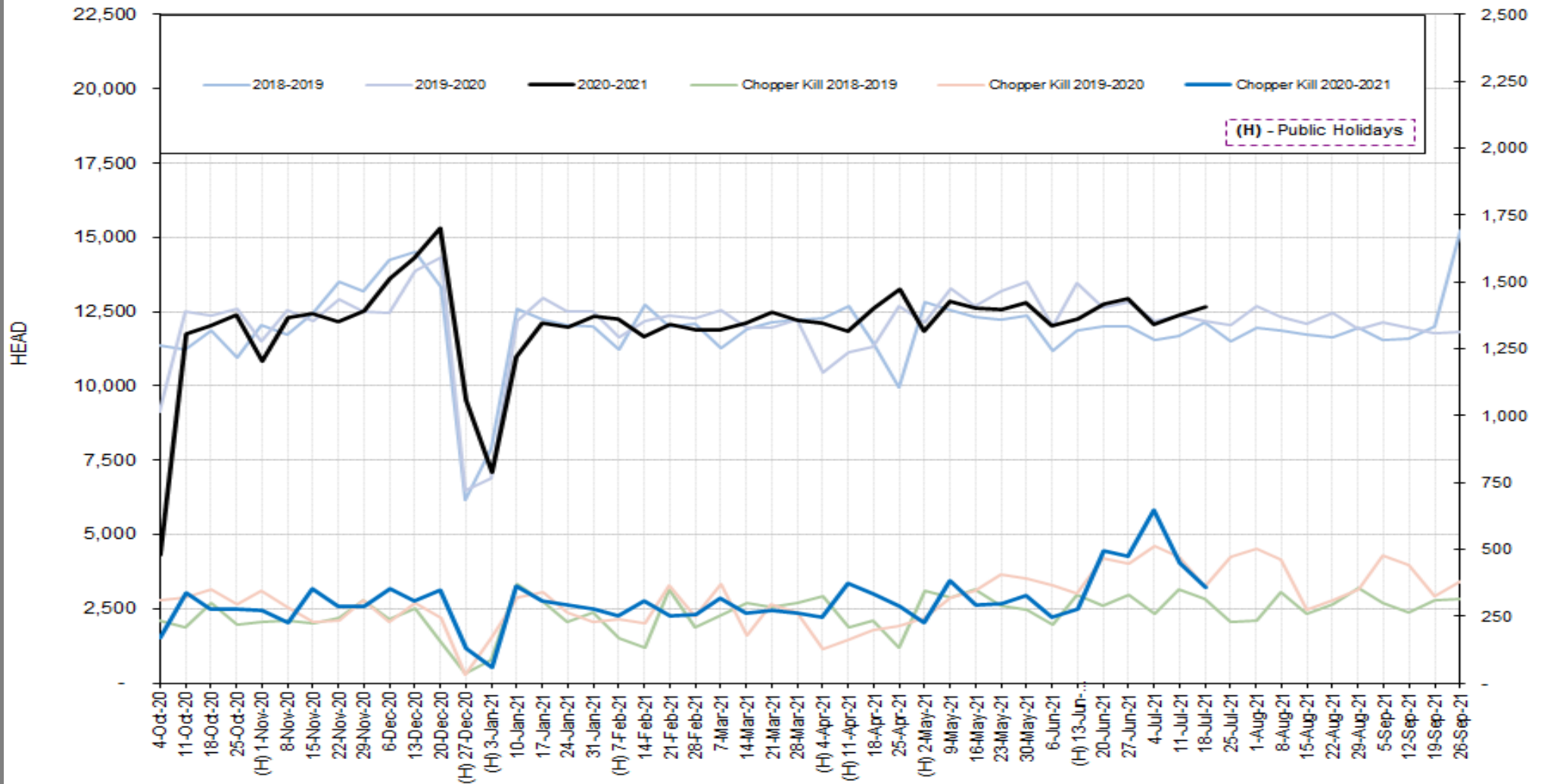
DISCLAIMER: Pork production data is provisional and may be revised without notice. All due care has been taken in preparing this information, however New Zealand Pork does not guarantee its accuracy. To the extent possible New Zealand Pork's liability is excluded, and persons acting in reliance on the information do so at their own risk. This information is licensed under the [Creative Commons Attribution-Noncommercial 3.0 New Zealand license](https://creativecommons.org/licenses/by-nc/3.0/)

WEEKLY PIGKILL REPORT

Week 42
Week ending 18th July 2021



TREND IN THE WEEKLY PIG KILL



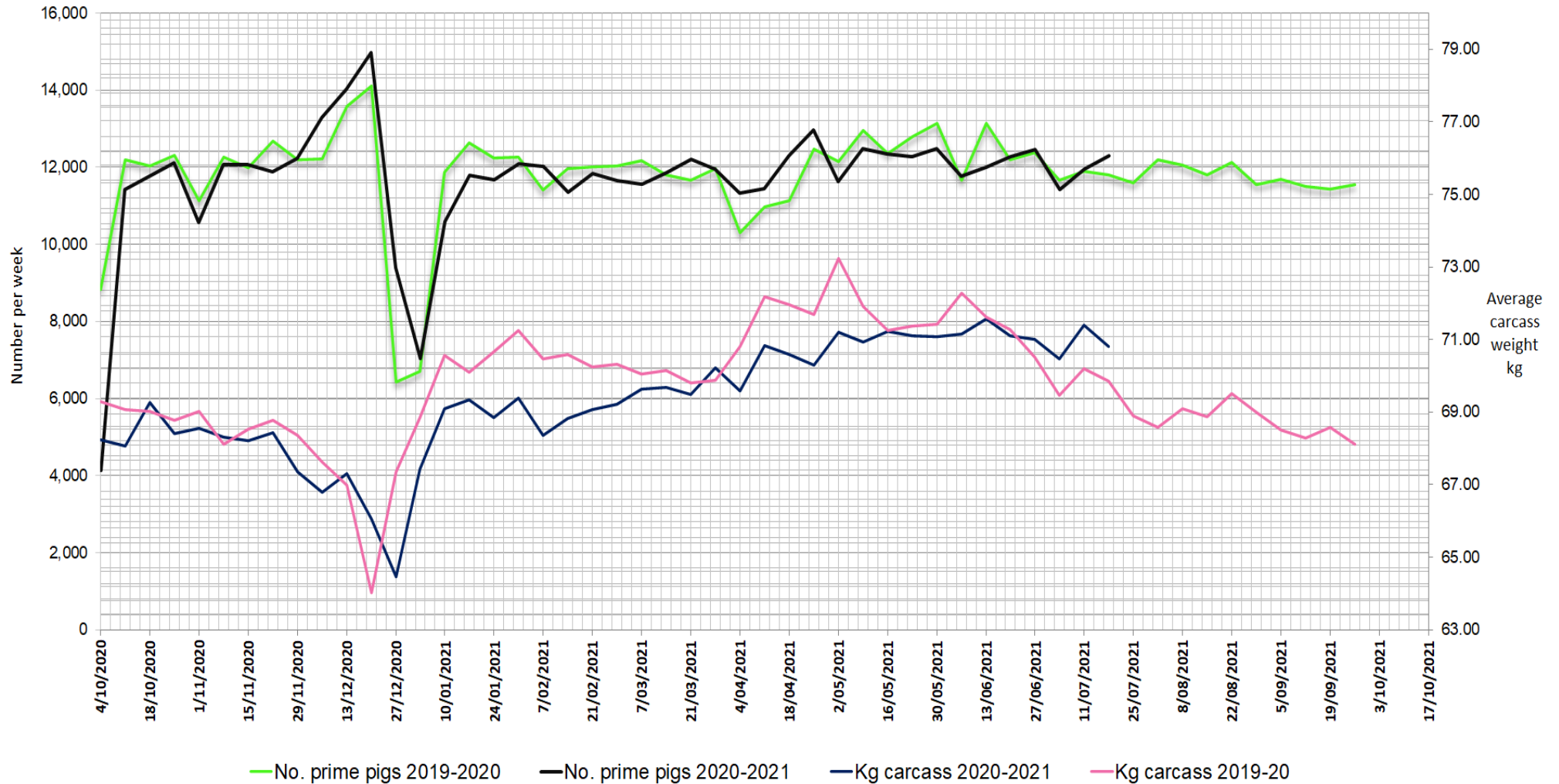
DISCLAIMER: Pork production data is provisional and may be revised without notice. All due care has been taken in preparing this information, however New Zealand Pork does not guarantee its accuracy. To the extent possible New Zealand Pork's liability is excluded, and persons acting in reliance on the information do so at their own risk. This information is licensed under the [Creative Commons Attribution-Noncommercial 3.0 New Zealand license](https://creativecommons.org/licenses/by-nc/3.0/)

WEEKLY PIGKILL REPORT

Week 42
Week ending 18th July 2021



WEEKLY PIG KILL DATA (Prime pigs)



DISCLAIMER: Pork production data is provisional and may be revised without notice. All due care has been taken in preparing this information, however New Zealand Pork does not guarantee its accuracy. To the extent possible New Zealand Pork's liability is excluded, and persons acting in reliance on the information do so at their own risk. This information is licensed under the [Creative Commons Attribution-Noncommercial 3.0 New Zealand license](https://creativecommons.org/licenses/by-nc/3.0/)