






# WEEKLY PIGKILL REPORT

Week 40  
Week ending 4th July 2021

**NZ**  
**PORK**

AVG. WEIGHT (KG)	% CHANGE IN PIG # FROM PREVIOUS YR	PRIME PIG NUMBER FROM PREVIOUS WEEK	CONSUMPTION 100% NZPORK (KG)	IMPORTED PORK COMPARED MAY 2020
Wk40 20-21: 72.87 	-0.9% 	Wk40: 11,431  Wk39: 12,455	May21: 8.68  Apr21: 8.75	- 2,888 (t CWE) 

## MARKET COMMENTARY – previous commentary Week 36 (ending 6<sup>th</sup> June 2021)

### WHOLESALE

The pork market was stable in June and had not changed significantly from May with contacts saying the market is “a bit sluggish”, “static/stable”, “firm”. Pork sales are projected to start looking better with beef and lamb pricing starting to “tighten up”. This tightening up of beef and lamb pricing hadn’t seen an increased volume of pork sales as of the end of June. There has been continued promotional activity with pork shoulders through the supermarket chain. Contacts believe this promotional activity has resulted in “inventory being more balanced”. Continued pork promotions are hoped to lift the pork schedule, “hopefully it [pork promotion] will give the ability to lift wholesale pricing and reflect that in pricing schedules”.

### RETAIL

Some retailers have found June sales for pork static, to an increase in sales with comments such as “[sales] static”, “sold more pork in June”, “saw an increase in pork sale volume due to cost and availability compared to other proteins”, “pork demand continues to strengthen as per normal moving into winter”.

Some retailers are finding there is no surplus pork on the market, with comments like “additional pork could be sold, but currently no surplus in the market”.

Retailers are expecting an increase in demand as factors like winter, increase in other protein prices, and demand for NZPork in cured product continues. Comments include, “In coming months, we may see further demand [for pork] as forecasted costs increase in Beef, and particularly Lamb take effect”, “Demand of NZPork in cured product will continue to put pressure on supply”. Some retailers think there is the potential for the demand of NZPork in cured product to have a “reverse effect, making imported pork a more viable option if this [demand] forces local costs up too high. Some retailers are going to be promoting pork more in the coming month, “moving forward with more pork promotions compared to other proteins due to availability”.

### IMPORTS

The Import ‘climate’ is consistent with the last previous couple of months with not much to report further with statements “Nothing to tell”, “all very quiet”, “prices stable”, “most Christmas orders are filled sales wise”. Contacts have received conflicting views to whether China is still in the pork market, “some say China is in the [pork] market, some say they are out”, “it depends on who you talk to”. Pork bellies are reported as “strong into Japan”.

This commentary has kindly been supplied from the perspective of wholesaler, retailer, importer sharing their view on the market as experienced by them. It is not necessarily the opinion of NZPork.

# WEEKLY PIGKILL REPORT

Week 40  
Week ending 4th July 2021



Date	IMPORTED PROD Year ending (t CWE)	DOMESTIC PROD year ending (t CWE)	Tonnes TOTAL PROD	IMPORTS %	Estimated POPULATION (000)	TOTAL CONSUMPTION PER CAPITA	Kg 100% NZPork	Kg Pork imports
May-21	65,130	44,518	109,649	59.40	5,127	21.39	8.68	12.7
Apr-21	63,856	44,811	108,667	58.76	5,122	21.22	8.75	12.5
Mar-21	62,375	43,976	106,351	58.65	5,117	20.79	8.59	12.2
Feb-21	62,466	43,733	106,199	58.82	5,114	20.76	8.55	12.2
Jan-21	62,966	43,827	106,793	58.96	5,109	20.90	8.58	12.3
Dec-20	61,730	44,186	105,916	58.28	5,099	20.77	8.67	12.1
Nov-20	60,364	43,672	104,036	58.02	5,096	20.42	8.57	11.8
Oct-20	61,103	43,485	104,588	58.42	5,094	20.53	8.54	12.0
Sep-20	61,390	43,799	105,189	58.36	5,061	20.78	8.65	12.1
Aug-20	62,817	43,649	106,466	59.00	5,020	21.21	8.69	12.5
Jul-20	65,953	43,761	109,714	60.11	5,010	21.94	8.74	13.2
Jun-20	67,348	43,901	111,249	60.53	5,007	22.21	8.76	13.4
May-20	68,018	43,136	111,154	61.19	4,996	22.23	8.63	13.6

NOTE: The unusually high chopper kill is attributed to a “clear out of pigs that were getting too big”.

Equivalent pig kill					
Year	Week 40	Year to date	Annual total	Tonnes Carcass weight	Average kg
2020-2021	12,076	478,693			
2019-2020	12,174	483,205	637,085	45,477	71.38
2018-2019	11,560	476,166	621,040	43,852	70.61
2017-2018	12,765	504,719	651,412	46,403	71.23
2017-2017	13,095	509,622	659,982	46,855	70.99
2015-2016	12,163	479,516	625,498	44,201	70.67

DISCLAIMER: Pork production data is provisional and may be revised without notice. All due care has been taken in preparing this information, however New Zealand Pork does not guarantee its accuracy. To the extent possible New Zealand Pork's liability is excluded, and persons acting in reliance on the information do so at their own risk. This information is licensed under the [Creative Commons Attribution-Noncommercial 3.0 New Zealand license](https://creativecommons.org/licenses/by-nc/3.0/)

# WEEKLY PIGKILL REPORT

Week 40  
Week ending 4th July 2021



## NATIONAL PIG SLAUGHTER MONITOR PREPARED BY NEW ZEALAND PORK

PIG KILL FULL WEEK ENDING <sup>1</sup> :		4/7/2021						Week 40				WEEKLY KILL COMPARISON		
		NUMBER OF CARCASSES	WEIGHT (KG)	AVG. WEIGHT (KG)	YEAR TO DATE WEIGHT TONNE	YEAR TO DATE WEIGHT LAST YEAR TONNE	% CHANGE IN WEIGHT COMPARED TO LAST YEAR	WHOLE CARCASSES CONDEMNED	TOTAL KILL <sup>2</sup>	LAST WK	% CHANGE	CUMULATIVE YEAR TO DATE <sup>3</sup>	CUMULATIVE YEAR TO DATE LAST YEAR	% CHANGE IN PIG NOS COMPARED TO LAST YEAR
PIGS < 50 KG	NTH IS	139	6,126	44.07	264	273	-3.6%	7	146	91	60.4%	6,045	6,685	-9.6%
	STH IS	149	5,220	35.03	339	324	4.5%	0	149	198	-24.7%	10,132	9,189	10.3%
	NZ	<b>288</b>	<b>11,346</b>	<b>39.40</b>	<b>603</b>	<b>598</b>	<b>0.8%</b>	<b>7</b>	<b>295</b>	<b>289</b>	<b>2.1%</b>	<b>16,177</b>	<b>15,874</b>	<b>1.9%</b>
PIGS 50-64.9KG	NTH IS	1,067	63,239	59.27	2,719	3,072	-11.5%	0	1,067	1,127	-5.3%	45,647	51,724	-11.7%
	STH IS	1,486	89,041	59.92	4,148	3,676	12.9%	0	1,486	1,647	-9.8%	69,289	61,523	12.6%
	NZ	<b>2,553</b>	<b>152,280</b>	<b>59.65</b>	<b>6,867</b>	<b>6,748</b>	<b>1.8%</b>	<b>0</b>	<b>2,553</b>	<b>2,774</b>	<b>-8.0%</b>	<b>114,936</b>	<b>113,247</b>	<b>1.5%</b>
PIGS 65-74.9 KG	NTH IS	1,809	126,987	70.20	4,965	5,048	-1.6%	0	1,809	1,960	-7.7%	71,065	72,482	-2.0%
	STH IS	3,041	213,240	70.12	9,725	9,107	6.8%	6	3,047	3,440	-11.4%	139,503	130,187	7.2%
	NZ	<b>4,850</b>	<b>340,227</b>	<b>70.15</b>	<b>14,690</b>	<b>14,155</b>	<b>3.8%</b>	<b>6</b>	<b>4,856</b>	<b>5,400</b>	<b>-10.1%</b>	<b>210,568</b>	<b>202,669</b>	<b>3.9%</b>
PIGS 75-84.9 KG	NTH IS	863	68,233	79.06	2,390	2,332	2.5%	0	863	897	-3.8%	30,080	28,550	5.4%
	STH IS	2,194	173,311	78.99	5,385	6,245	-13.8%	2	2,196	2,079	5.6%	68,173	79,095	-13.8%
	NZ	<b>3,057</b>	<b>241,544</b>	<b>79.01</b>	<b>7,775</b>	<b>8,577</b>	<b>-9.3%</b>	<b>2</b>	<b>3,059</b>	<b>2,976</b>	<b>2.8%</b>	<b>98,253</b>	<b>107,645</b>	<b>-8.7%</b>
PIGS 85-94.9 KG	NTH IS	58	5,094	87.83	232	136	69.8%	0	58	139	-58.3%	2,633	1,511	74.3%
	STH IS	518	45,817	88.45	1,839	2,260	-18.6%	0	518	753	-31.2%	20,785	25,522	-18.6%
	NZ	<b>576</b>	<b>50,911</b>	<b>88.39</b>	<b>2,070</b>	<b>2,396</b>	<b>-13.6%</b>	<b>0</b>	<b>576</b>	<b>892</b>	<b>-35.4%</b>	<b>23,418</b>	<b>27,033</b>	<b>-13.4%</b>
PIGS >95 KG	NTH IS	1	96	96.00	15	11	31.5%	0	1	10	-90.0%	151	112	34.8%
	STH IS	91	9,006	98.97	317	537	-40.9%	0	91	114	-20.2%	3,174	5,096	-37.7%
	NZ	<b>92</b>	<b>9,102</b>	<b>98.93</b>	<b>332</b>	<b>548</b>	<b>-39.5%</b>	<b>0</b>	<b>92</b>	<b>124</b>	<b>-25.8%</b>	<b>3,325</b>	<b>5,208</b>	<b>-36.2%</b>
TOTAL PRIME PIGS	NTH IS	3,937	269,775	68.52	10,584	10,873	-2.7%	7	3,944	4,224	-6.6%	155,621	161,064	-3.4%
	STH IS	7,479	535,635	71.62	21,753	22,149	-1.8%	8	7,487	8,231	-9.0%	311,056	310,612	0.1%
	NZ	<b>11,416</b>	<b>805,410</b>	<b>70.55</b>	<b>32,337</b>	<b>33,022</b>	<b>-2.1%</b>	<b>15</b>	<b>11,431</b>	<b>12,455</b>	<b>-8.2%</b>	<b>466,677</b>	<b>471,676</b>	<b>-1.1%</b>
CHOPPERS	NTH IS	66	9,644	146.12	311	233	33.3%	0	66	58	13.8%	2,078	1,626	27.8%
	STH IS	578	63,817	110.41	1,311	1,323	-0.9%	1	579	418	38.5%	9,938	9,903	0.4%
	NZ	<b>644</b>	<b>73,461</b>	<b>114.07</b>	<b>1,622</b>	<b>1,556</b>	<b>4.2%</b>	<b>1</b>	<b>645</b>	<b>476</b>	<b>35.5%</b>	<b>12,016</b>	<b>11,529</b>	<b>4.2%</b>
TOTAL	NZ	<b>12,060</b>	<b>878,871</b>	<b>72.87</b>	<b>33,959</b>	<b>34,578</b>	<b>-1.8%</b>	<b>16</b>	<b>12,076</b>	<b>12,931</b>	<b>-6.6%</b>	<b>478,693</b>	<b>483,205</b>	<b>-0.9%</b>

<sup>1</sup> Information gathered weekly from all abattoirs licensed to kill pigs.

<sup>2</sup> Includes carcasses (after removal of condemned parts) inspected and passed for human consumption, and whole carcasses condemned up to and at scales

<sup>3</sup> Meat Year (1 October – 30 September) week to date

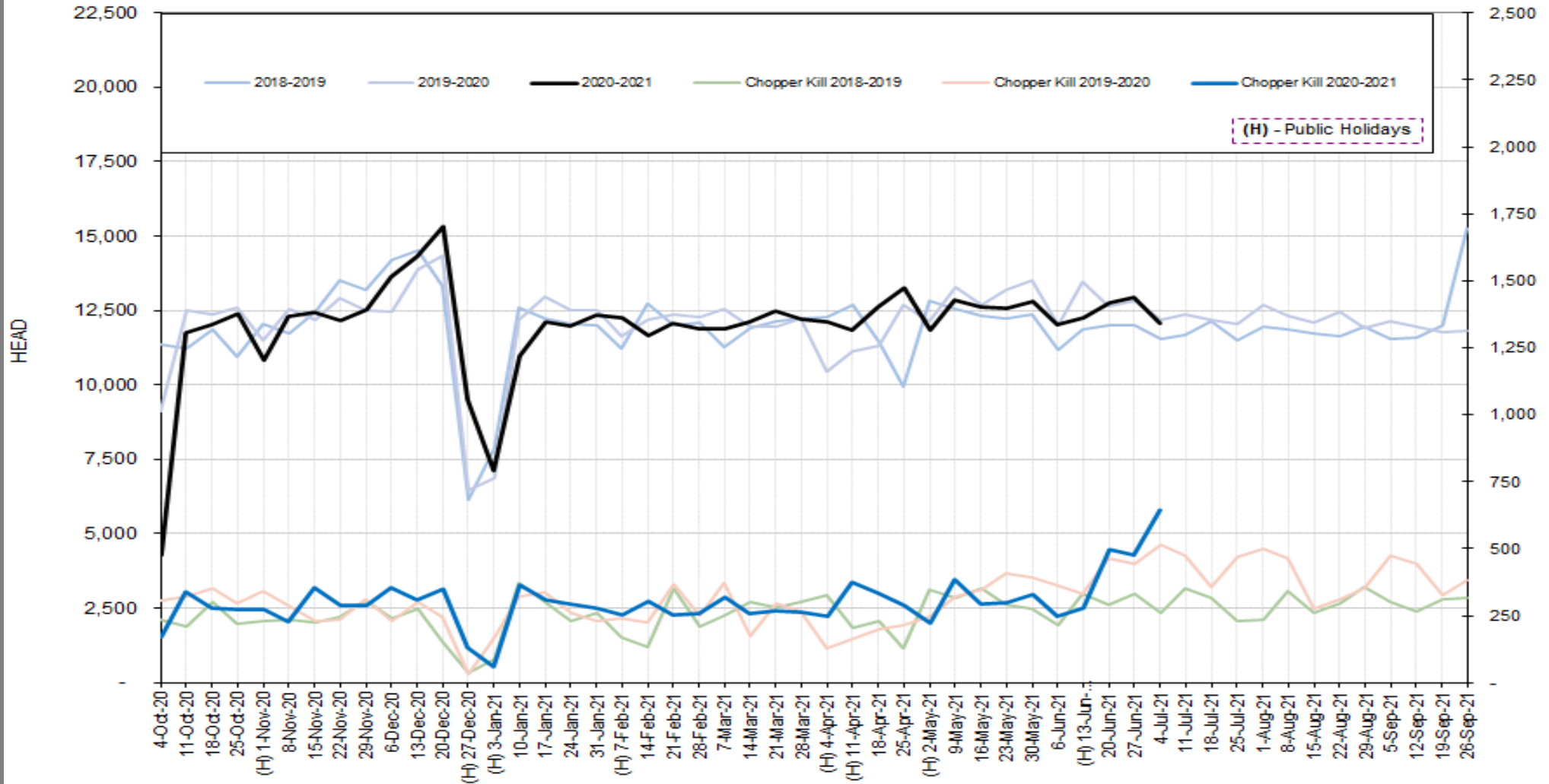
DISCLAIMER: Pork production data is provisional and may be revised without notice. All due care has been taken in preparing this information, however New Zealand Pork does not guarantee its accuracy. To the extent possible New Zealand Pork's liability is excluded, and persons acting in reliance on the information do so at their own risk. This information is licensed under the [Creative Commons Attribution-Noncommercial 3.0 New Zealand license](https://creativecommons.org/licenses/by-nc/3.0/)

# WEEKLY PIGKILL REPORT

Week 40  
Week ending 4th July 2021



### TREND IN THE WEEKLY PIG KILL



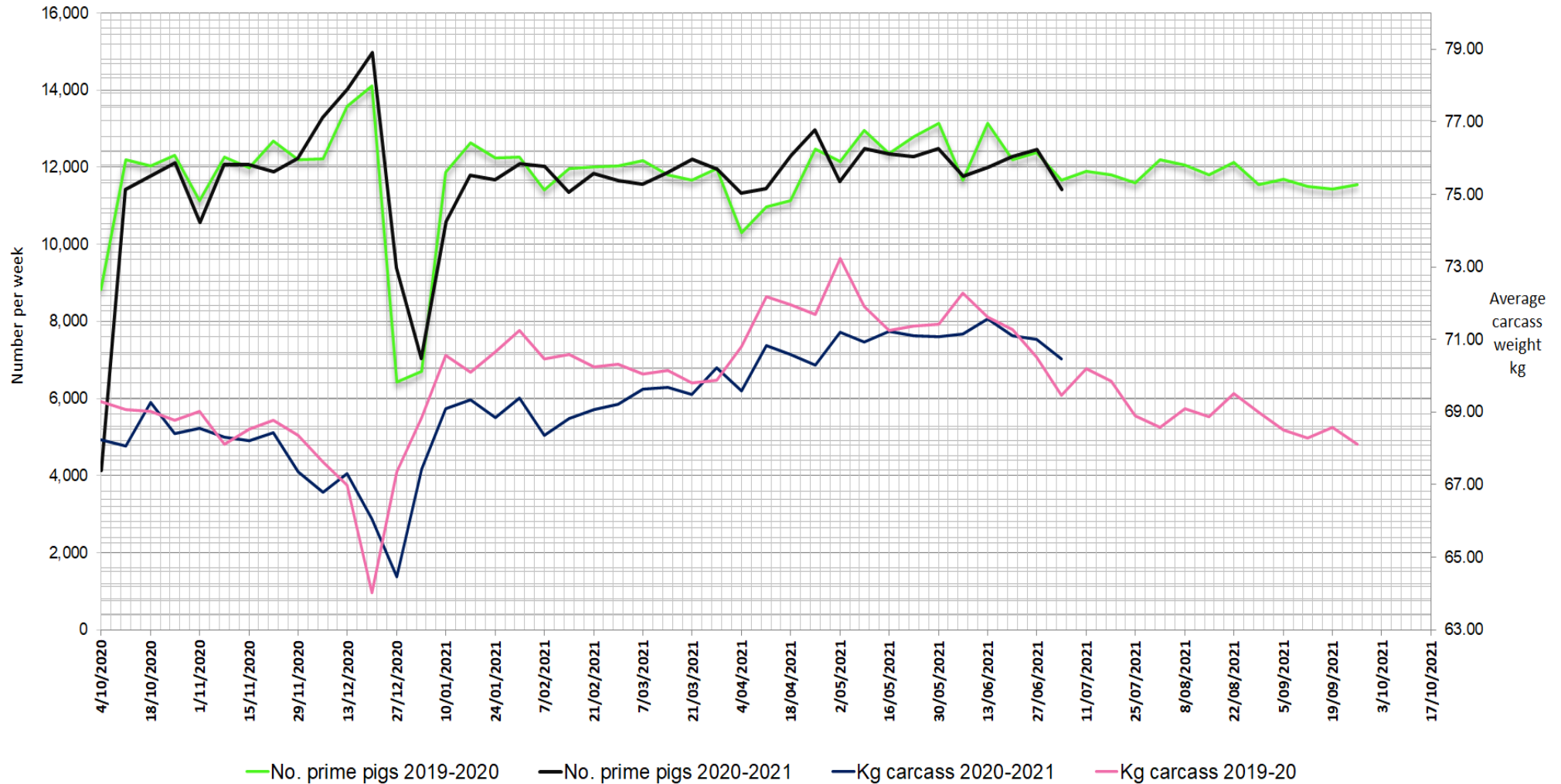
DISCLAIMER: Pork production data is provisional and may be revised without notice. All due care has been taken in preparing this information, however New Zealand Pork does not guarantee its accuracy. To the extent possible New Zealand Pork's liability is excluded, and persons acting in reliance on the information do so at their own risk. This information is licensed under the [Creative Commons Attribution-Noncommercial 3.0 New Zealand license](https://creativecommons.org/licenses/by-nc/3.0/)

# WEEKLY PIGKILL REPORT

Week 40  
Week ending 4th July 2021



## WEEKLY PIG KILL DATA (Prime pigs)



DISCLAIMER: Pork production data is provisional and may be revised without notice. All due care has been taken in preparing this information, however New Zealand Pork does not guarantee its accuracy. To the extent possible New Zealand Pork's liability is excluded, and persons acting in reliance on the information do so at their own risk. This information is licensed under the [Creative Commons Attribution-Noncommercial 3.0 New Zealand license](https://creativecommons.org/licenses/by-nc/3.0/)