






# WEEKLY PIGKILL REPORT

Week 38  
Week ending 20th June 2021



AVG. WEIGHT (KG)		% CHANGE IN PIG # FROM PREVIOUS YR		PRIME PIG NUMBER FROM PREVIOUS WEEK		CONSUMPTION 100% NZPORK (KG)		IMPORTED PORK COMPARED APRIL 2020
WK38 20-21: 73.09		-1%		Wk38: 12,280		Apr21: 8.75		- 4,675 (t CWE)
Wk38 19-20: 73.51				Wk37: 11,993		Mar21: 8.59		

## MARKET COMMENTARY – previous commentary Week 36 (ending 6<sup>th</sup> June 2021)

Date	IMPORTED PROD Year ending (t CWE)	DOMESTIC PROD year ending (t CWE)	Tonnes TOTAL PROD	IMPORTS %	Estimated POPULATION (000)	TOTAL CONSUMPTION PER CAPITA	Kg 100% NZPork	Kg Pork imports
Apr-21	63,856	44,811	108,667	58.76	5,122	21.22	8.75	12.5
Mar-21	62,375	43,976	106,351	58.65	5,117	20.79	8.59	12.2
Feb-21	62,466	43,733	106,199	58.82	5,114	20.76	8.55	12.2
Jan-21	62,966	43,827	106,793	58.96	5,109	20.90	8.58	12.3
Dec-20	61,730	44,186	105,916	58.28	5,099	20.77	8.67	12.1
Nov-20	60,364	43,672	104,036	58.02	5,096	20.42	8.57	11.8
Oct-20	61,103	43,485	104,588	58.42	5,094	20.53	8.54	12.0
Sep-20	61,390	43,799	105,189	58.36	5,061	20.78	8.65	12.1
Aug-20	62,817	43,649	106,466	59	5,020	21.21	8.69	12.5
Jul-20	65,953	43,761	109,714	60.11	5,010	21.94	8.74	13.2
Jun-20	67,348	43,901	111,249	60.53	5,007	22.21	8.76	13.4
May-20	68,018	43,136	111,154	61.19	4,996	22.23	8.63	13.6
Apr-20	68,531	43,246	111,777	61.31	4,980	22.44	8.68	13.76

Equivalent pig kill					
Year	Week 38	Year to date	Annual total	Carcass weight	Average kg
2020-2021	12,776	453,686			
2019-2020	12,664	458,208	637,085	45,477	71.38
2018-2019	12,020	452,597	621,040	43,852	70.61
2017-2018	13,069	479,501	651,412	46,403	71.23
2016-2017	13,509	482,945	659,982	46,855	70.99

DISCLAIMER: Pork production data is provisional and may be revised without notice. All due care has been taken in preparing this information, however New Zealand Pork does not guarantee its accuracy. To the extent possible New Zealand Pork's liability is excluded, and persons acting in reliance on the information do so at their own risk. This information is licensed under the [Creative Commons Attribution-Noncommercial 3.0 New Zealand license](#)

# WEEKLY PIGKILL REPORT

Week 38  
Week ending 20th June 2021



PIG KILL FULL WEEK ENDING <sup>1</sup> :		20/6/2021				Week 38		WEEKLY KILL COMPARISON						
		NUMBER OF CARCASSES	WEIGHT (KG)	AVG. WEIGHT (KG)	YEAR TO DATE WEIGHT TONNE	YEAR TO DATE WEIGHT LAST YEAR TONNE	% CHANGE IN WEIGHT COMPARED TO LAST YEAR	WHOLE CARCASSES CONDEMNED	TOTAL KILL <sup>2</sup>	LAST WK	% CHANGE	CUMULATIVE YEAR TO DATE <sup>3</sup>	CUMULATIVE YEAR TO DATE LAST YEAR	% CHANGE IN PIG NOS COMPARED TO LAST YEAR
PIGS < 50 KG	NTH IS	117	5,228	44.68	254	259	-2.1%	2	119	109	9.2%	5,808	6,347	-8.5%
	STH IS	191	6,822	35.72	327	307	6.7%	0	191	179	6.7%	9,785	8,710	12.3%
	NZ	308	12,050	39.12	581	566	2.7%	2	310	288	7.6%	15,593	15,057	3.6%
PIGS 50-64.9KG	NTH IS	1,033	61,935	59.96	2,584	2,926	-11.7%	0	1,033	853	21.1%	43,453	49,255	-11.8%
	STH IS	1,488	89,208	59.95	3,960	3,475	14.0%	3	1,491	1,312	13.6%	66,156	58,163	13.7%
	NZ	2,521	151,143	59.95	6,544	6,401	2.2%	3	2,524	2,165	16.6%	109,609	107,418	2.0%
PIGS 65-74.9 KG	NTH IS	1,960	137,314	70.06	4,701	4,793	-1.9%	4	1,964	1,909	2.9%	67,296	68,837	-2.2%
	STH IS	3,266	228,705	70.03	9,271	8,623	7.5%	7	3,273	3,354	-2.4%	133,016	123,256	7.9%
	NZ	5,226	366,019	70.04	13,973	13,416	4.1%	11	5,237	5,263	-0.5%	200,312	192,093	4.3%
PIGS 75-84.9 KG	NTH IS	880	69,676	79.18	2,251	2,192	2.7%	0	880	801	9.9%	28,320	26,819	5.6%
	STH IS	2,322	183,667	79.10	5,047	5,964	-15.4%	1	2,323	2,408	-3.5%	63,898	75,543	-15.4%
	NZ	3,202	253,343	79.12	7,298	8,156	-10.5%	1	3,203	3,209	-0.2%	92,218	102,362	-9.9%
PIGS 85-94.9 KG	NTH IS	144	12,764	88.64	214	127	68.3%	0	144	168	-14.3%	2,436	1,408	73.0%
	STH IS	730	64,690	88.62	1,726	2,160	-20.1%	0	730	800	-8.8%	19,514	24,387	-20.0%
	NZ	874	77,454	88.62	1,940	2,287	-15.2%	0	874	968	-9.7%	21,950	25,795	-14.9%
PIGS >95 KG	NTH IS	18	1,777	98.72	14	10	32.0%	0	18	20	-10.0%	140	103	35.9%
	STH IS	114	11,331	99.39	297	503	-40.9%	0	114	80	42.5%	2,969	4,811	-38.3%
	NZ	132	13,108	99.30	311	513	-39.5%	0	132	100	32.0%	3,109	4,914	-36.7%
TOTAL PRIME PIGS	NTH IS	4,152	288,694	69.53	10,018	10,307	-2.8%	6	4,158	3,860	7.7%	147,453	152,769	-3.5%
	STH IS	8,111	584,423	72.05	20,630	21,032	-1.9%	11	8,122	8,133	-0.1%	295,338	294,870	0.2%
	NZ	12,263	873,117	71.20	30,648	31,339	-2.2%	17	12,280	11,993	2.4%	442,791	447,639	-1.1%
CHOPPERS	NTH IS	66	10,848	164.36	292	217	34.7%	0	66	43	53.5%	1,954	1,514	29.1%
	STH IS	430	48,632	113.10	1,200	1,219	-1.5%	0	430	235	83.0%	8,941	9,055	-1.3%
	NZ	496	59,480	119.92	1,493	1,435	4.0%	0	496	278	78.4%	10,895	10,569	3.1%
TOTAL	NZ	12,759	932,597	73.09	32,140	32,775	-1.9%	17	12,776	12,271	4.1%	453,686	458,208	-1.0%

<sup>1</sup> Information gathered weekly from all abattoirs licensed to kill pigs.

<sup>2</sup> Includes carcasses (after removal of condemned parts) inspected and passed for human consumption, and whole carcasses condemned up to and at scales

<sup>3</sup> Meat Year (1 October – 30 September) week to date

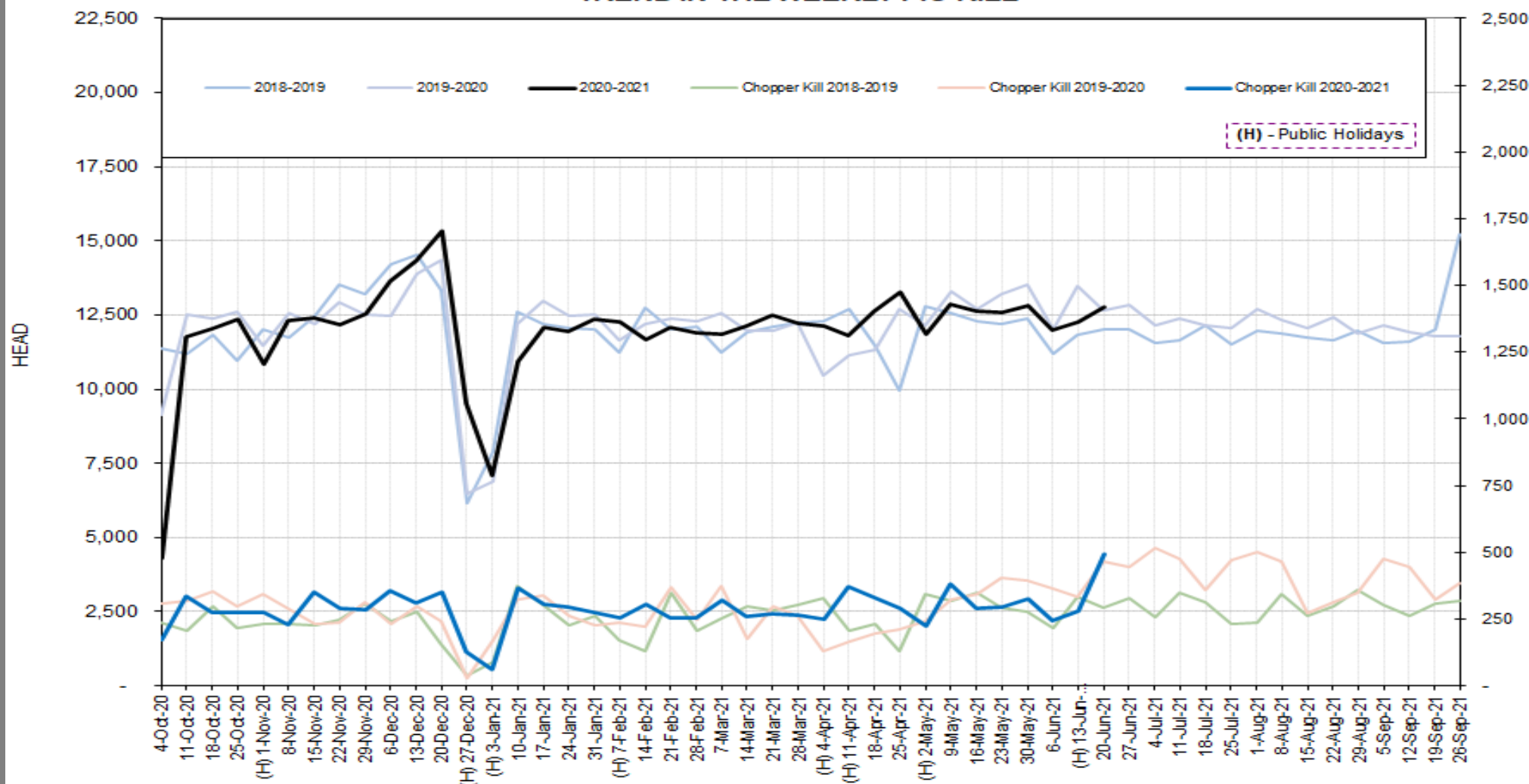
DISCLAIMER: Pork production data is provisional and may be revised without notice. All due care has been taken in preparing this information, however New Zealand Pork does not guarantee its accuracy. To the extent possible New Zealand Pork's liability is excluded, and persons acting in reliance on the information do so at their own risk. This information is licensed under the [Creative Commons Attribution-Noncommercial 3.0 New Zealand license](#)

# WEEKLY PIGKILL REPORT

Week 38  
Week ending 20th June 2021



## TREND IN THE WEEKLY PIG KILL



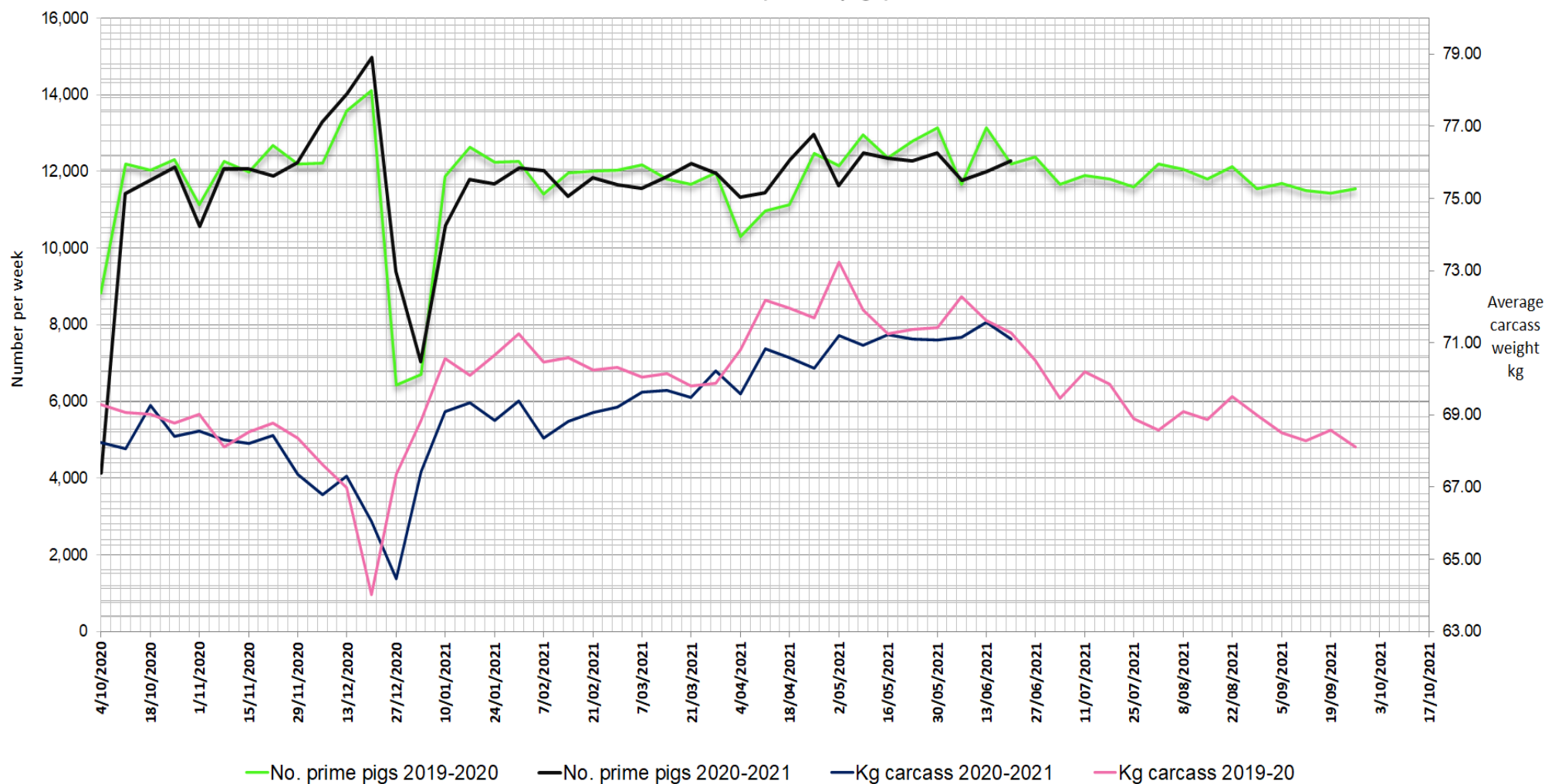
DISCLAIMER: Pork production data is provisional and may be revised without notice. All due care has been taken in preparing this information, however New Zealand Pork does not guarantee its accuracy. To the extent possible New Zealand Pork's liability is excluded, and persons acting in reliance on the information do so at their own risk. This information is licensed under the [Creative Commons Attribution-Noncommercial 3.0 New Zealand license](#)

# WEEKLY PIGKILL REPORT

Week 38  
Week ending 20th June 2021



WEEKLY PIG KILL DATA (Prime pigs)



DISCLAIMER: Pork production data is provisional and may be revised without notice. All due care has been taken in preparing this information, however New Zealand Pork does not guarantee its accuracy. To the extent possible New Zealand Pork's liability is excluded, and persons acting in reliance on the information do so at their own risk. This information is licensed under the [Creative Commons Attribution-Noncommercial 3.0 New Zealand license](#)