

# WEEKLY PIGKILL REPORT

Week 35  
Week ending 30<sup>th</sup> May 2021



AVG. WEIGHT (KG)	% CHANGE IN PIG # FROM PREVIOUS YR	PRIME PIG NUMBER FROM PREVIOUS WEEK	CONSUMPTION 100% NZPORK (KG)	IMPORTED PORK COMPARED MAR 2020
WK35 20-21: 72.81 Wk35 19-20: 73.00	-0.8%	Wk35: 12,487 Wk34: 12,268	Mar21: 8.59 Feb21: 8.55	- 6,282 (t CWE)

## MARKET COMMENTARY – previous commentary Week 31 (ending 2<sup>nd</sup> May 2021)

Date	IMPORTED PROD Year ending (t CWE)	DOMESTIC PROD year ending (t CWE)	Tonnes TOTAL PROD	IMPORTS %	Estimated POPULATION (000)	TOTAL CONSUMPTION PER CAPITA	Kg 100% NZPork	Kg Pork imports
Mar-21	62,375	43,976	106,351	58.65	5,117	20.79	8.59	12.2
Feb-21	62,466	43,733	106,199	58.82	5,114	20.76	8.55	12.2
Jan-21	62,966	43,827	106,793	58.96	5,109	20.90	8.58	12.3
Dec-20	61,730	44,186	105,916	58.28	5,099	20.77	8.67	12.1
Nov-20	60,364	43,672	104,036	58.02	5,096	20.42	8.57	11.8
Oct-20	61,103	43,485	104,588	58.42	5,094	20.53	8.54	12.0
Sep-20	61,390	43,799	105,189	58.36	5,061	20.78	8.65	12.1
Aug-20	62,817	43,649	106,466	59	5,020	21.21	8.69	12.5
Jul-20	65,953	43,761	109,714	60.11	5,010	21.94	8.74	13.2
Jun-20	67,348	43,901	111,249	60.53	5,007	22.21	8.76	13.4
May-20	68,018	43,136	111,154	61.19	4,996	22.23	8.63	13.6
Apr-20	68,531	43,246	111,777	61.31	4,980	22.44	8.68	13.76
Mar-20	68,657	44,055	112,712	60.91	4,971	22.67	8.86	13.81

Equivalent pig kill				Tonnes	
Year	Week 35	Year to date	Annual total	Carcass weight	Average kg
2020-2021	12,814	416,631			
2019-2020	13,526	420,048	637,085	45,477	71.38
2018-2019	12,385	417,549	621,040	43,852	70.61
2017-2018	13,138	442,374	651,412	46,403	71.23
2016-2017	13,550	443,338	659,982	46,855	70.99

DISCLAIMER: Pork production data is provisional and may be revised without notice. All due care has been taken in preparing this information, however New Zealand Pork does not guarantee its accuracy. To the extent possible New Zealand Pork's liability is excluded, and persons acting in reliance on the information do so at their own risk. This information is licensed under the [Creative Commons Attribution-Noncommercial 3.0 New Zealand license](https://creativecommons.org/licenses/by-nc/3.0/)

# WEEKLY PIGKILL REPORT

Week 35  
Week ending 30<sup>th</sup> May 2021



## NATIONAL PIG SLAUGHTER MONITOR PREPARED BY NEW ZEALAND PORK

PIG KILL FULL WEEK ENDING <sup>1</sup> :		30/5/2021			Week 35			WEEKLY KILL COMPARISON						
		NUMBER OF CARCASSES	WEIGHT (KG)	AVG. WEIGHT (KG)	YEAR TO DATE WEIGHT TONNE	YEAR TO DATE WEIGHT LAST YEAR TONNE	% CHANGE IN WEIGHT COMPARED TO LAST YEAR	WHOLE CARCASSES CONDEMNED	TOTAL KILL <sup>2</sup>	LAST WK	% CHANGE	CUMULATIVE YEAR TO DATE <sup>3</sup>	CUMULATIVE YEAR TO DATE LAST YEAR	% CHANGE IN PIG NOS COMPARED TO LAST YEAR
PIGS < 50 KG	NTH IS	137	6,069	44.30	238	242	-1.5%	0	137	135	1.5%	5,448	5,927	-8.1%
	STH IS	165	5,488	33.26	308	284	8.7%	0	165	185	-10.8%	9,209	8,097	13.7%
	NZ	<b>302</b>	<b>11,557</b>	<b>38.27</b>	<b>546</b>	<b>525</b>	<b>4.0%</b>	<b>0</b>	<b>302</b>	<b>320</b>	<b>-5.6%</b>	<b>14,657</b>	<b>14,024</b>	<b>4.5%</b>
PIGS 50-64.9KG	NTH IS	972	58,289	59.97	2,413	2,716	-11.2%	3	975	1,026	-5.0%	40,596	45,712	-11.2%
	STH IS	1,367	81,928	59.93	3,722	3,210	15.9%	1	1,368	1,198	14.2%	62,175	53,742	15.7%
	NZ	<b>2,339</b>	<b>140,217</b>	<b>59.95</b>	<b>6,134</b>	<b>5,926</b>	<b>3.5%</b>	<b>4</b>	<b>2,343</b>	<b>2,224</b>	<b>5.4%</b>	<b>102,771</b>	<b>99,454</b>	<b>3.3%</b>
PIGS 65-74.9 KG	NTH IS	2,084	146,244	70.17	4,277	4,386	-2.5%	0	2,084	2,066	0.9%	61,231	63,008	-2.8%
	STH IS	3,710	259,735	70.01	8,588	7,945	8.1%	6	3,716	3,672	1.2%	123,225	113,567	8.5%
	NZ	<b>5,794</b>	<b>405,979</b>	<b>70.07</b>	<b>12,864</b>	<b>12,330</b>	<b>4.3%</b>	<b>6</b>	<b>5,800</b>	<b>5,738</b>	<b>1.1%</b>	<b>184,456</b>	<b>176,575</b>	<b>4.5%</b>
PIGS 75-84.9 KG	NTH IS	934	73,687	78.89	2,050	1,963	4.4%	0	934	856	9.1%	25,776	23,989	7.4%
	STH IS	2,122	167,870	79.11	4,520	5,457	-17.2%	1	2,123	2,218	-4.3%	57,221	69,125	-17.2%
	NZ	<b>3,056</b>	<b>241,557</b>	<b>79.04</b>	<b>6,570</b>	<b>7,420</b>	<b>-11.5%</b>	<b>1</b>	<b>3,057</b>	<b>3,074</b>	<b>-0.6%</b>	<b>82,997</b>	<b>93,114</b>	<b>-10.9%</b>
PIGS 85-94.9 KG	NTH IS	106	9,327	87.99	174	110	57.7%	0	106	116	-8.6%	1,984	1,215	63.3%
	STH IS	784	69,469	88.61	1,516	1,983	-23.6%	0	784	630	24.4%	17,140	22,393	-23.5%
	NZ	<b>890</b>	<b>78,796</b>	<b>88.53</b>	<b>1,690</b>	<b>2,093</b>	<b>-19.3%</b>	<b>0</b>	<b>890</b>	<b>746</b>	<b>19.3%</b>	<b>19,124</b>	<b>23,608</b>	<b>-19.0%</b>
PIGS >95 KG	NTH IS	3	288	96.00	9	10	-5.0%	0	3	16	-81.3%	93	95	-2.1%
	STH IS	92	9,197	99.97	266	382	-30.3%	0	92	150	-38.7%	2,658	3,772	-29.5%
	NZ	<b>95</b>	<b>9,485</b>	<b>99.84</b>	<b>275</b>	<b>391</b>	<b>-29.7%</b>	<b>0</b>	<b>95</b>	<b>166</b>	<b>-42.8%</b>	<b>2,751</b>	<b>3,867</b>	<b>-28.9%</b>
TOTAL PRIME PIGS	NTH IS	4,236	293,904	69.38	9,161	9,426	-2.8%	3	4,239	4,215	0.6%	135,128	139,946	-3.4%
	STH IS	8,240	593,687	72.05	18,919	19,260	-1.8%	8	8,248	8,053	2.4%	271,628	270,696	0.3%
	NZ	<b>12,476</b>	<b>887,591</b>	<b>71.14</b>	<b>28,079</b>	<b>28,686</b>	<b>-2.1%</b>	<b>11</b>	<b>12,487</b>	<b>12,268</b>	<b>1.8%</b>	<b>406,756</b>	<b>410,642</b>	<b>-0.9%</b>
CHOPPERS	NTH IS	57	8,460	148.42	266	195	36.2%	0	57	59	-3.4%	1,790	1,365	31.1%
	STH IS	269	36,124	134.29	1,097	1,093	0.4%	1	270	238	13.4%	8,085	8,041	0.5%
	NZ	<b>326</b>	<b>44,584</b>	<b>136.76</b>	<b>1,364</b>	<b>1,289</b>	<b>5.8%</b>	<b>1</b>	<b>327</b>	<b>297</b>	<b>10.1%</b>	<b>9,875</b>	<b>9,406</b>	<b>5.0%</b>
TOTAL	NZ	<b>12,802</b>	<b>932,175</b>	<b>72.81</b>	<b>29,443</b>	<b>29,975</b>	<b>-1.8%</b>	<b>12</b>	<b>12,814</b>	<b>12,565</b>	<b>2.0%</b>	<b>416,631</b>	<b>420,048</b>	<b>-0.8%</b>

<sup>1</sup> Information gathered weekly from all abattoirs licensed to kill pigs.

<sup>2</sup> Includes carcasses (after removal of condemned parts) inspected and passed for human consumption, and whole carcasses condemned up to and at scales

<sup>3</sup> Meat Year (1 October – 30 September) week to date

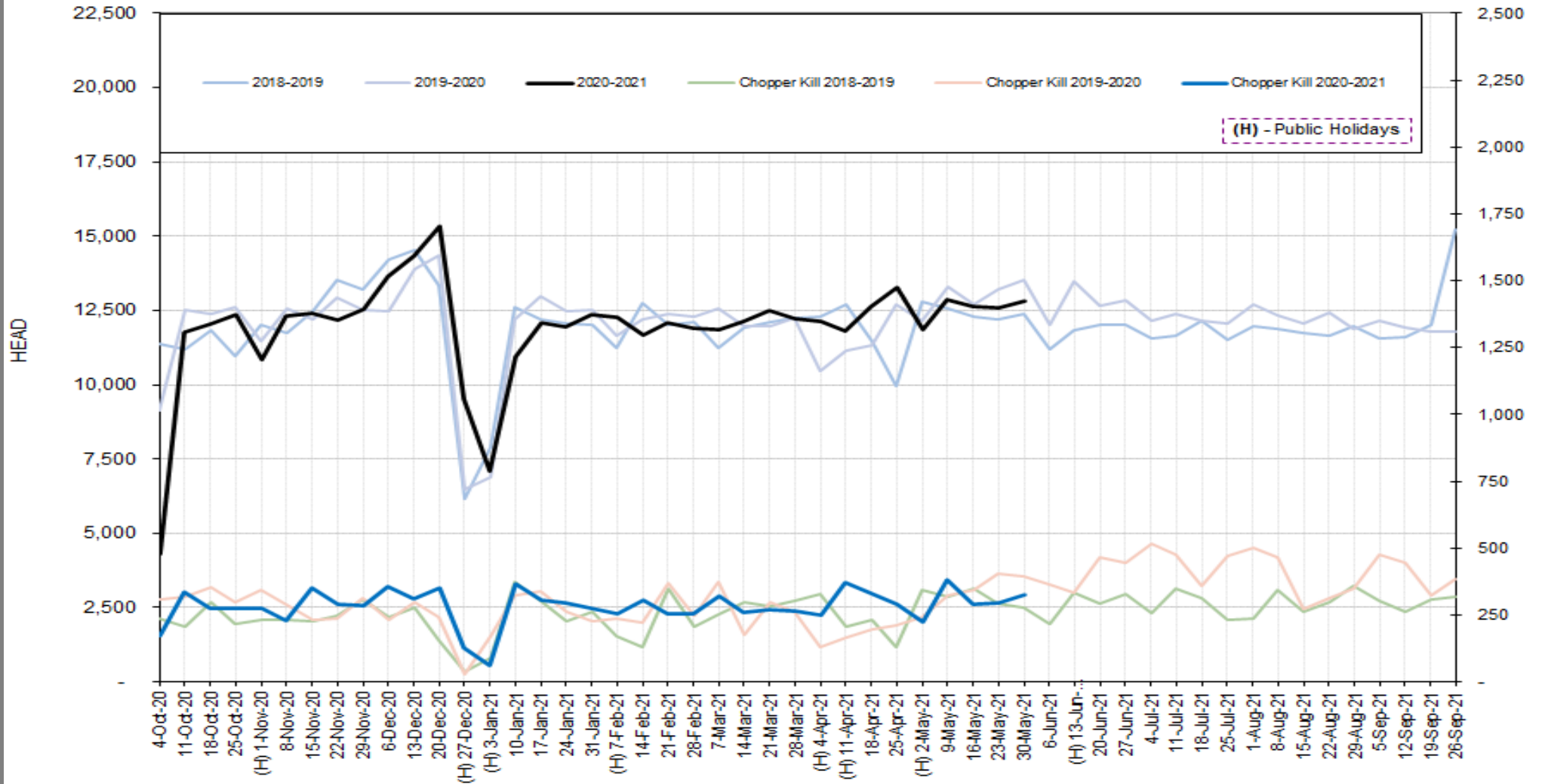
DISCLAIMER: Pork production data is provisional and may be revised without notice. All due care has been taken in preparing this information, however New Zealand Pork does not guarantee its accuracy. To the extent possible New Zealand Pork's liability is excluded, and persons acting in reliance on the information do so at their own risk. This information is licensed under the [Creative Commons Attribution-Noncommercial 3.0 New Zealand license](https://creativecommons.org/licenses/by-nc/3.0/)

# WEEKLY PIGKILL REPORT

Week 35  
Week ending 30<sup>th</sup> May 2021



### TREND IN THE WEEKLY PIG KILL



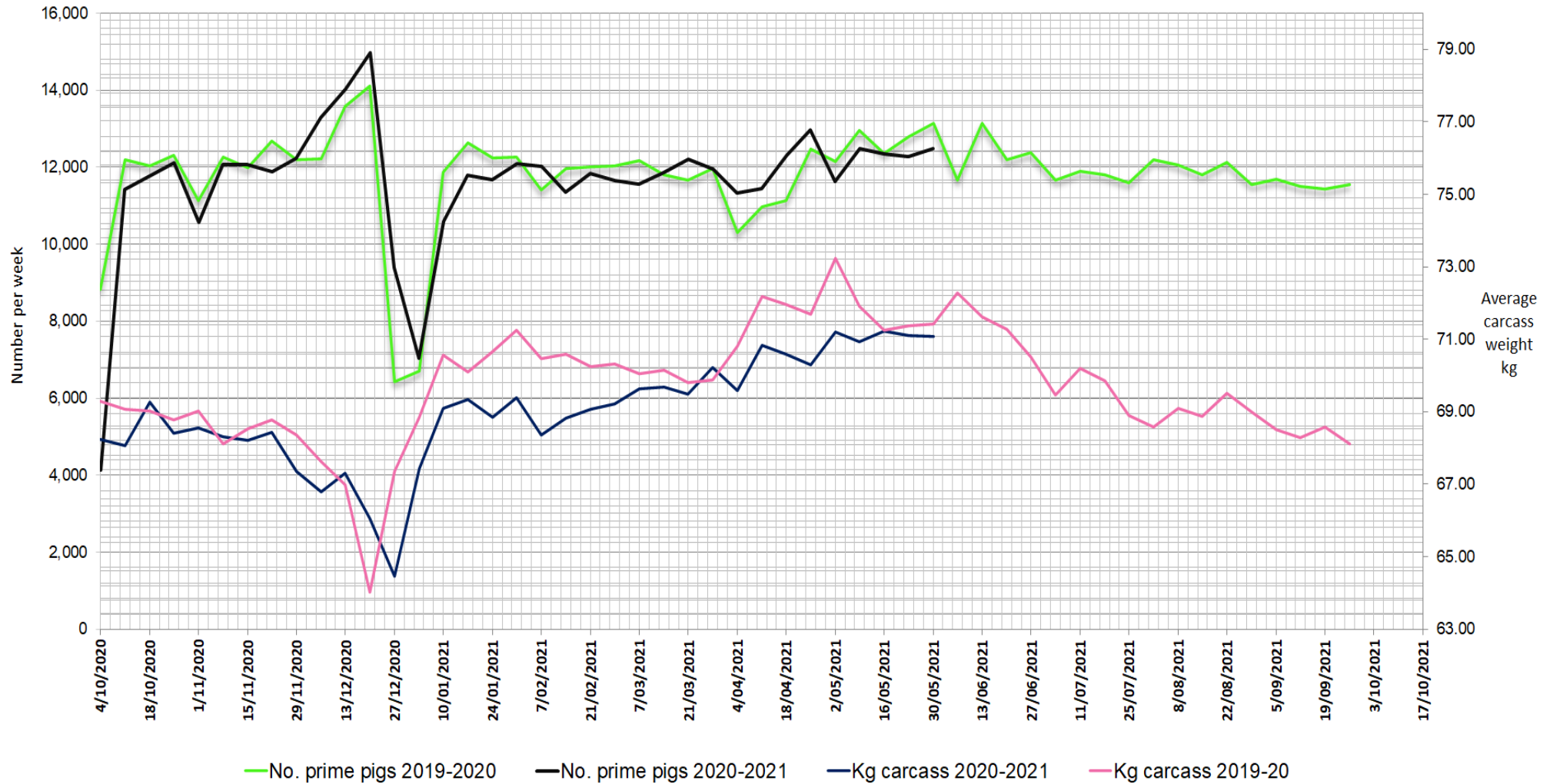
DISCLAIMER: Pork production data is provisional and may be revised without notice. All due care has been taken in preparing this information, however New Zealand Pork does not guarantee its accuracy. To the extent possible New Zealand Pork's liability is excluded, and persons acting in reliance on the information do so at their own risk. This information is licensed under the [Creative Commons Attribution-Noncommercial 3.0 New Zealand license](https://creativecommons.org/licenses/by-nc/3.0/)

# WEEKLY PIGKILL REPORT

Week 35  
Week ending 30<sup>th</sup> May 2021



### WEEKLY PIG KILL DATA (Prime pigs)



DISCLAIMER: Pork production data is provisional and may be revised without notice. All due care has been taken in preparing this information, however New Zealand Pork does not guarantee its accuracy. To the extent possible New Zealand Pork's liability is excluded, and persons acting in reliance on the information do so at their own risk. This information is licensed under the [Creative Commons Attribution-Noncommercial 3.0 New Zealand license](https://creativecommons.org/licenses/by-nc/3.0/)