

WEEKLY PIGKILL REPORT

Week 33
Week ending 16th May 2021



**AVG. WEIGHT
(KG)**

WK33 20-21: 72.77

Wk33 19-20: 73.29



**% CHANGE IN PIG #
FROM PREVIOUS YR**

-0.5%



**PRIME PIG NUMBER
FROM PREVIOUS WEEK**

Wk33: 12,332

Wk32: 12,478



**CONSUMPTION
100% NZPORK (KG)**

Mar21: 8.59

Feb21: 8.55



**IMPORTED PORK
COMPARED MAR 2020**

- 6,282 (t CWE)



MARKET COMMENTARY – previous commentary Week 31 (ending 2nd May 2021)

Date	IMPORTED PROD Year ending (t CWE)	DOMESTIC PROD year ending (t CWE)	Tonnes TOTAL PROD	IMPORTS %	Estimated POPULATION (000)	TOTAL CONSUMPTION PER CAPITA	Kg 100% NZPork	Kg Pork imports
Mar-21	62,375	43,976	106,351	58.65	5,117	20.79	8.59	12.2
Feb-21	62,466	43,733	106,199	58.82	5,114	20.76	8.55	12.2
Jan-21	62,966	43,827	106,793	58.96	5,109	20.90	8.58	12.3
Dec-20	61,730	44,186	105,916	58.28	5,099	20.77	8.67	12.1
Nov-20	60,364	43,672	104,036	58.02	5,096	20.42	8.57	11.8
Oct-20	61,103	43,485	104,588	58.42	5,094	20.53	8.54	12.0
Sep-20	61,390	43,799	105,189	58.36	5,061	20.78	8.65	12.1
Aug-20	62,817	43,649	106,466	59	5,020	21.21	8.69	12.5
Jul-20	65,953	43,761	109,714	60.11	5,010	21.94	8.74	13.2
Jun-20	67,348	43,901	111,249	60.53	5,007	22.21	8.76	13.4
May-20	68,018	43,136	111,154	61.19	4,996	22.23	8.63	13.6
Apr-20	68,531	43,246	111,777	61.31	4,980	22.44	8.68	13.76
Mar-20	68,657	44,055	112,712	60.91	4,971	22.67	8.86	13.81

Equivalent pig kill				Tonnes	
Year	Week 33	Year to date	Annual total	Carcass weight	Average kg
2020-2021	12,624	391,252			
2019-2020	12,701	393,325	637,085	45,477	71.38
2018-2019	12,311	392,947	621,040	43,852	70.61
2017-2018	12,718	416,205	651,412	46,403	71.23
2016-2017	13,668	416,381	659,982	46,855	70.99

DISCLAIMER: Pork production data is provisional and may be revised without notice. All due care has been taken in preparing this information, however New Zealand Pork does not guarantee its accuracy. To the extent possible New Zealand Pork's liability is excluded, and persons acting in reliance on the information do so at their own risk. This information is licensed under the [Creative Commons Attribution-Noncommercial 3.0 New Zealand license](https://creativecommons.org/licenses/by-nc/3.0/)

WEEKLY PIGKILL REPORT

Week 33
Week ending 16th May 2021



NATIONAL PIG SLAUGHTER MONITOR PREPARED BY NEW ZEALAND PORK

PIG KILL FULL WEEK ENDING ¹ :		16/5/2021						Week 33		WEEKLY KILL COMPARISON				
		NUMBER OF CARCASSES	WEIGHT (KG)	AVG. WEIGHT (KG)	YEAR TO DATE WEIGHT TONNE	YEAR TO DATE WEIGHT LAST YEAR TONNE	% CHANGE IN WEIGHT COMPARED TO LAST YEAR	WHOLE CARCASSES CONDEMNED	TOTAL KILL ²	LAST WK	% CHANGE	CUMULATIVE YEAR TO DATE ³	CUMULATIVE YEAR TO DATE LAST YEAR	% CHANGE IN PIG NOS COMPARED TO LAST YEAR
PIGS < 50 KG	NTH IS	115	5,069	44.08	226	232	-2.5%	2	117	178	-34.3%	5,176	5,695	-9.1%
	STH IS	180	6,206	34.48	297	266	11.7%	0	180	304	-40.8%	8,859	7,605	16.5%
	NZ	295	11,275	38.22	523	498	5.1%	2	297	482	-38.4%	14,035	13,300	5.5%
PIGS 50-64.9KG	NTH IS	1,050	62,750	59.76	2,293	2,577	-11.0%	0	1,050	997	5.3%	38,595	43,397	-11.1%
	STH IS	1,094	66,184	60.50	3,568	3,017	18.2%	2	1,096	1,145	-4.3%	59,609	50,529	18.0%
	NZ	2,144	128,934	60.14	5,861	5,595	4.8%	2	2,146	2,142	0.2%	98,204	93,926	4.6%
PIGS 65-74.9 KG	NTH IS	2,077	145,391	70.00	3,986	4,098	-2.7%	3	2,080	2,066	0.7%	57,081	58,894	-3.1%
	STH IS	3,813	267,658	70.20	8,071	7,458	8.2%	7	3,820	3,516	8.6%	115,837	106,599	8.7%
	NZ	5,890	413,049	70.13	12,057	11,556	4.3%	10	5,900	5,582	5.7%	172,918	165,493	4.5%
PIGS 75-84.9 KG	NTH IS	884	69,727	78.88	1,909	1,803	5.9%	0	884	931	-5.0%	23,986	22,029	8.9%
	STH IS	2,290	181,011	79.04	4,177	5,109	-18.2%	0	2,290	2,346	-2.4%	52,880	64,717	-18.3%
	NZ	3,174	250,738	79.00	6,086	6,912	-12.0%	0	3,174	3,277	-3.1%	76,866	86,746	-11.4%
PIGS 85-94.9 KG	NTH IS	119	10,554	88.69	154	107	44.1%	0	119	111	7.2%	1,762	1,179	49.4%
	STH IS	548	48,484	88.47	1,390	1,853	-25.0%	0	548	701	-21.8%	15,726	20,933	-24.9%
	NZ	667	59,038	88.51	1,545	1,961	-21.2%	0	667	812	-17.9%	17,488	22,112	-20.9%
PIGS >95 KG	NTH IS	9	878	97.56	7	9	-18.1%	0	9	3	200.0%	74	88	-15.9%
	STH IS	138	14,313	103.72	241	305	-20.9%	1	139	180	-22.8%	2,416	3,053	-20.9%
	NZ	147	15,191	103.34	249	314	-20.8%	1	148	183	-19.1%	2,490	3,141	-20.7%
TOTAL PRIME PIGS	NTH IS	4,254	294,369	69.20	8,576	8,826	-2.8%	5	4,259	4,286	-0.6%	126,674	131,282	-3.5%
	STH IS	8,063	583,856	72.41	17,744	18,009	-1.5%	10	8,073	8,192	-1.5%	255,327	253,436	0.7%
	NZ	12,317	878,225	71.30	26,320	26,835	-1.9%	15	12,332	12,478	-1.2%	382,001	384,718	-0.7%
CHOPPERS	NTH IS	62	9,144	147.48	249	183	35.6%	0	62	58	6.9%	1,674	1,278	31.0%
	STH IS	229	30,120	131.53	1,030	1,002	2.7%	1	230	325	-29.2%	7,577	7,329	3.4%
	NZ	291	39,264	134.93	1,279	1,186	7.8%	1	292	383	-23.8%	9,251	8,607	7.5%
TOTAL	NZ	12,608	917,489	72.77	27,598	28,021	-1.5%	16	12,624	12,861	-1.8%	391,252	393,325	-0.5%

¹ Information gathered weekly from all abattoirs licensed to kill pigs.

² Includes carcasses (after removal of condemned parts) inspected and passed for human consumption, and whole carcasses condemned up to and at scales

³ Meat Year (1 October – 30 September) week to date

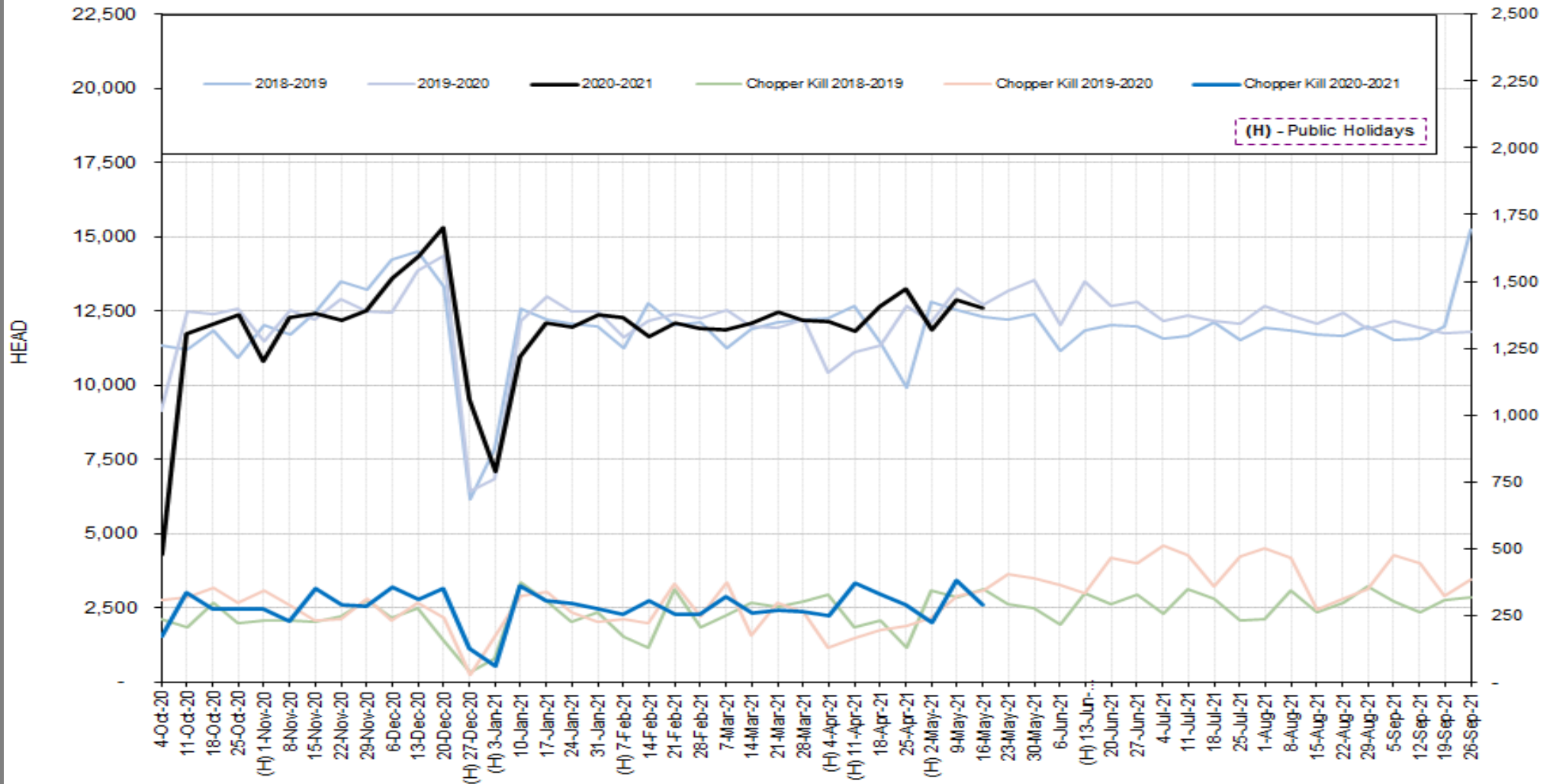
DISCLAIMER: Pork production data is provisional and may be revised without notice. All due care has been taken in preparing this information, however New Zealand Pork does not guarantee its accuracy. To the extent possible New Zealand Pork's liability is excluded, and persons acting in reliance on the information do so at their own risk. This information is licensed under the [Creative Commons Attribution-Noncommercial 3.0 New Zealand license](https://creativecommons.org/licenses/by-nc/3.0/)

WEEKLY PIGKILL REPORT

Week 33
Week ending 16th May 2021



TREND IN THE WEEKLY PIG KILL



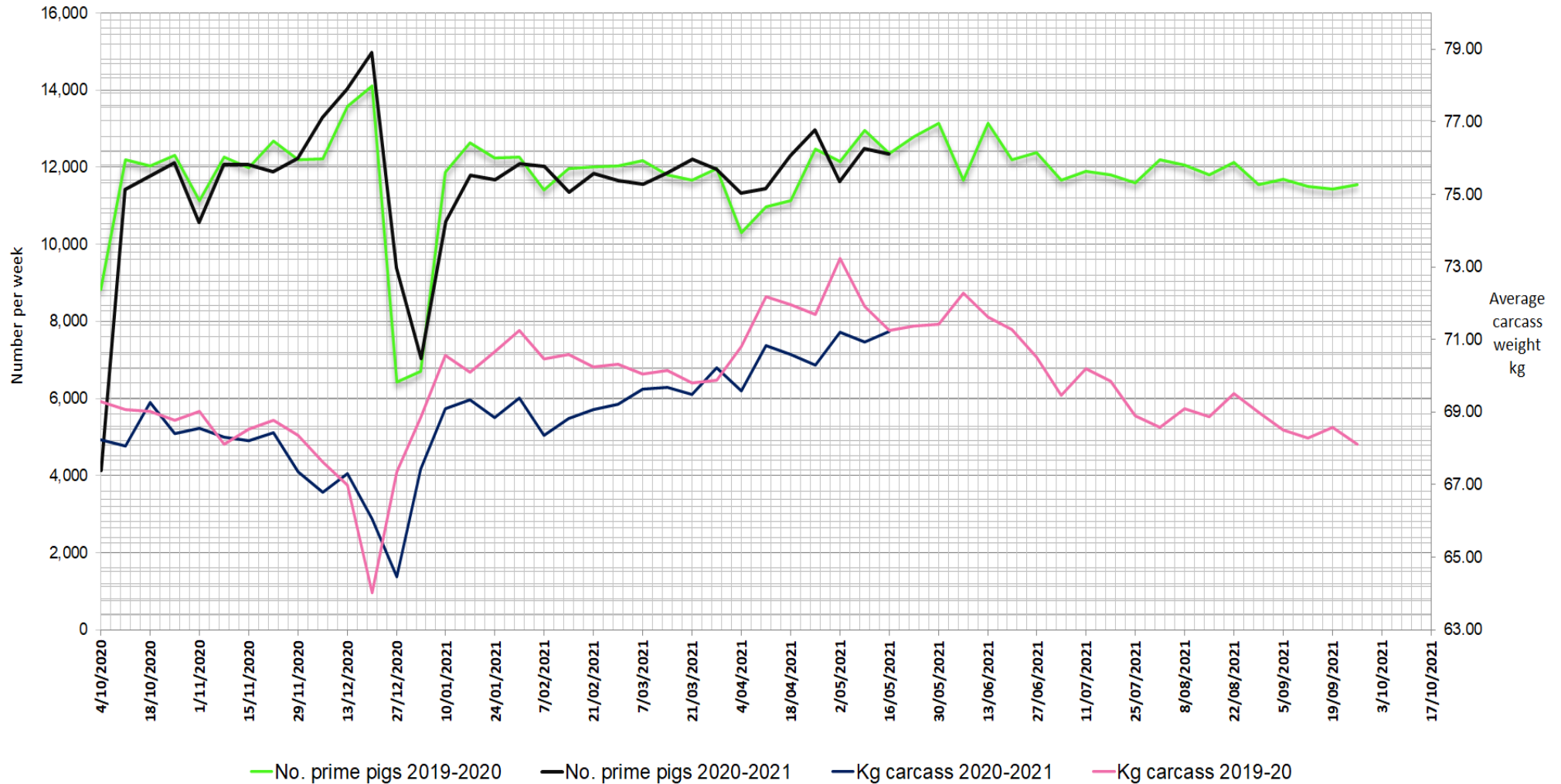
DISCLAIMER: Pork production data is provisional and may be revised without notice. All due care has been taken in preparing this information, however New Zealand Pork does not guarantee its accuracy. To the extent possible New Zealand Pork's liability is excluded, and persons acting in reliance on the information do so at their own risk. This information is licensed under the [Creative Commons Attribution-Noncommercial 3.0 New Zealand license](https://creativecommons.org/licenses/by-nc/3.0/)

WEEKLY PIGKILL REPORT

Week 33
Week ending 16th May 2021



WEEKLY PIG KILL DATA (Prime pigs)



DISCLAIMER: Pork production data is provisional and may be revised without notice. All due care has been taken in preparing this information, however New Zealand Pork does not guarantee its accuracy. To the extent possible New Zealand Pork's liability is excluded, and persons acting in reliance on the information do so at their own risk. This information is licensed under the [Creative Commons Attribution-Noncommercial 3.0 New Zealand license](https://creativecommons.org/licenses/by-nc/3.0/)