

WEEKLY PIGKILL REPORT

Week 26
Week ending 28th March 2021



AVG. WEIGHT (KG)

WK26 20-21: 71.80

Wk26 19-20: 71.38



% CHANGE IN PIG # FROM PREVIOUS YR

% -1.6



PRIME PIG NUMBER FROM PREVIOUS WEEK

Wk26: 11,947

Wk25: 12,211



CONSUMPTION 100% NZPORK (KG)

Jan21: 8.58

Dec20: 8.67



IMPORTED PORK COMPARED JAN 2020

- 7,370 (t CWE)



Date	IMPORTED PROD Year ending (t CWE)	DOMESTIC PROD year ending (t CWE)	Tonnes TOTAL PROD	IMPORTS %	Estimated POPULATION (000)	TOTAL CONSUMPTION PER CAPITA	Kg 100% NZPork	Kg Pork imports
Jan-21	62,966	43,827	106,793	58.96	5,109	20.90	8.58	12.3
Dec-20	61,730	44,186	105,916	58.28	5,099	20.77	8.67	12.1
Nov-20	60,364	43,672	104,036	58.02	5,096	20.42	8.57	11.8
Oct-20	61,103	43,485	104,588	58.42	5,094	20.53	8.54	12.0
Sep-20	61,390	43,799	105,189	58.36	5,061	20.78	8.65	12.1
Aug-20	62,817	43,649	106,466	59	5,020	21.21	8.69	12.5
Jul-20	65,953	43,761	109,714	60.11	5,010	21.94	8.74	13.2
Jun-20	67,348	43,901	111,249	60.53	5,007	22.21	8.76	13.4
May-20	68,018	43,136	111,154	61.19	4,996	22.23	8.63	13.6
Apr-20	68,531	43,246	111,777	61.31	4,980	22.44	8.68	13.76
Mar-20	68,657	44,055	112,712	60.91	4,971	22.67	8.86	13.81
Feb-20	69,682	43,737	113,419	61.43	4,965	22.84	8.80	14.03
Jan-20	70,336	43,620	113,956	61.72	4,958	22.98	8.79	14.18

Equivalent pig kill week 26				Tonnes	
Year	Week 26	Year to date	Annual total	Carcass weight	Average kg
2020-2021	12,210	304,616			
2019-2020	12,237	309,631	637,085	45,477	71.38
2018-2019	12,221	308,902	621,040	43,852	70.61
2017-2018	12,141	326,151	651,412	46,403	71.23
2016-2017	13,237	326,227	659,982	46,855	70.99

DISCLAIMER: Pork production data is provisional and may be revised without notice. All due care has been taken in preparing this information, however New Zealand Pork does not guarantee its accuracy. To the extent possible New Zealand Pork's liability is excluded, and persons acting in reliance on the information do so at their own risk. This information is licensed under the [Creative Commons Attribution-Noncommercial 3.0 New Zealand license](https://creativecommons.org/licenses/by-nc/3.0/)

WEEKLY PIGKILL REPORT

Week 26
Week ending 28th March 2021



NATIONAL PIG SLAUGHTER MONITOR PREPARED BY NEW ZEALAND PORK

PIG KILL FULL WEEK ENDING ¹ :		28/3/2021						Week 26		WEEKLY KILL COMPARISON				
		NUMBER OF CARCASSES	WEIGHT (KG)	AVG. WEIGHT (KG)	YEAR TO DATE WEIGHT TONNE	YEAR TO DATE WEIGHT LAST YEAR TONNE	% CHANGE IN WEIGHT COMPARED TO LAST YEAR	WHOLE CARCASSES CONDEMNED	TOTAL KILL ²	LAST WK	% CHANGE	CUMULATIVE YEAR TO DATE ³	CUMULATIVE YEAR TO DATE LAST YEAR	% CHANGE IN PIG NOS COMPARED TO LAST YEAR
PIGS < 50 KG	NTH IS	113	4,909	43.44	184	197	-6.9%	2	115	177	-35.0%	4,202	4,901	-14.3%
	STH IS	261	7,794	29.86	245	229	6.9%	0	261	251	4.0%	7,191	6,743	6.6%
	NZ	374	12,703	33.97	428	426	0.5%	2	376	428	-12.1%	11,393	11,644	-2.2%
PIGS 50-64.9KG	NTH IS	968	57,902	59.82	1,895	2,174	-12.8%	0	968	1,224	-20.9%	31,926	36,637	-12.9%
	STH IS	1,513	90,767	59.99	2,984	2,463	21.1%	0	1,513	1,619	-6.5%	49,829	41,253	20.8%
	NZ	2,481	148,669	59.92	4,879	4,637	5.2%	0	2,481	2,843	-12.7%	81,755	77,890	5.0%
PIGS 65-74.9 KG	NTH IS	1,923	135,247	70.33	3,037	3,178	-4.5%	0	1,923	1,875	2.6%	43,541	45,761	-4.9%
	STH IS	3,595	251,534	69.97	6,327	5,883	7.6%	4	3,599	3,633	-0.9%	90,953	84,127	8.1%
	NZ	5,518	386,781	70.09	9,364	9,061	3.3%	4	5,522	5,508	0.3%	134,494	129,888	3.5%
PIGS 75-84.9 KG	NTH IS	892	69,944	78.41	1,403	1,281	9.5%	0	892	854	4.4%	17,558	15,548	12.9%
	STH IS	1,866	147,699	79.15	3,046	3,878	-21.5%	0	1,866	1,884	-1.0%	38,568	49,125	-21.5%
	NZ	2,758	217,643	78.91	4,449	5,159	-13.8%	0	2,758	2,738	0.7%	56,126	64,673	-13.2%
PIGS 85-94.9 KG	NTH IS	70	6,125	87.50	88	67	30.9%	3	73	58	25.9%	1,004	722	39.1%
	STH IS	580	51,471	88.74	997	1,383	-27.9%	0	580	559	3.8%	11,277	15,628	-27.8%
	NZ	650	57,596	88.61	1,084	1,450	-25.2%	3	653	617	5.8%	12,281	16,350	-24.9%
PIGS >95 KG	NTH IS	7	731	104.43	3	6	-58.1%	0	7	0		26	60	-56.7%
	STH IS	150	15,020	100.13	142	212	-32.9%	0	150	77	94.8%	1,432	2,134	-32.9%
	NZ	157	15,751	100.32	145	218	-33.7%	0	157	77	103.9%	1,458	2,194	-33.5%
TOTAL PRIME PIGS	NTH IS	3,973	274,858	69.18	6,608	6,904	-4.3%	5	3,978	4,188	-5.0%	98,257	103,629	-5.2%
	STH IS	7,965	564,285	70.85	13,740	14,047	-2.2%	4	7,969	8,023	-0.7%	199,250	199,010	0.1%
	NZ	11,938	839,143	70.29	20,349	20,951	-2.9%	9	11,947	12,211	-2.2%	297,507	302,639	-1.7%
CHOPPERS	NTH IS	60	8,956	149.27	197	158	24.6%	1	61	56	8.9%	1,321	1,102	19.9%
	STH IS	202	27,891	138.07	787	801	-1.7%	0	202	214	-5.6%	5,788	5,890	-1.7%
	NZ	262	36,847	140.64	984	959	2.6%	1	263	270	-2.6%	7,109	6,992	1.7%
TOTAL	NZ	12,200	875,990	71.80	21,332	21,910	-2.6%	10	12,210	12,481	-2.2%	304,616	309,631	-1.6%

¹ Information gathered weekly from all abattoirs licensed to kill pigs.

² Includes carcasses (after removal of condemned parts) inspected and passed for human consumption, and whole carcasses condemned up to and at scales

³ Meat Year (1 October – 30 September) week to date

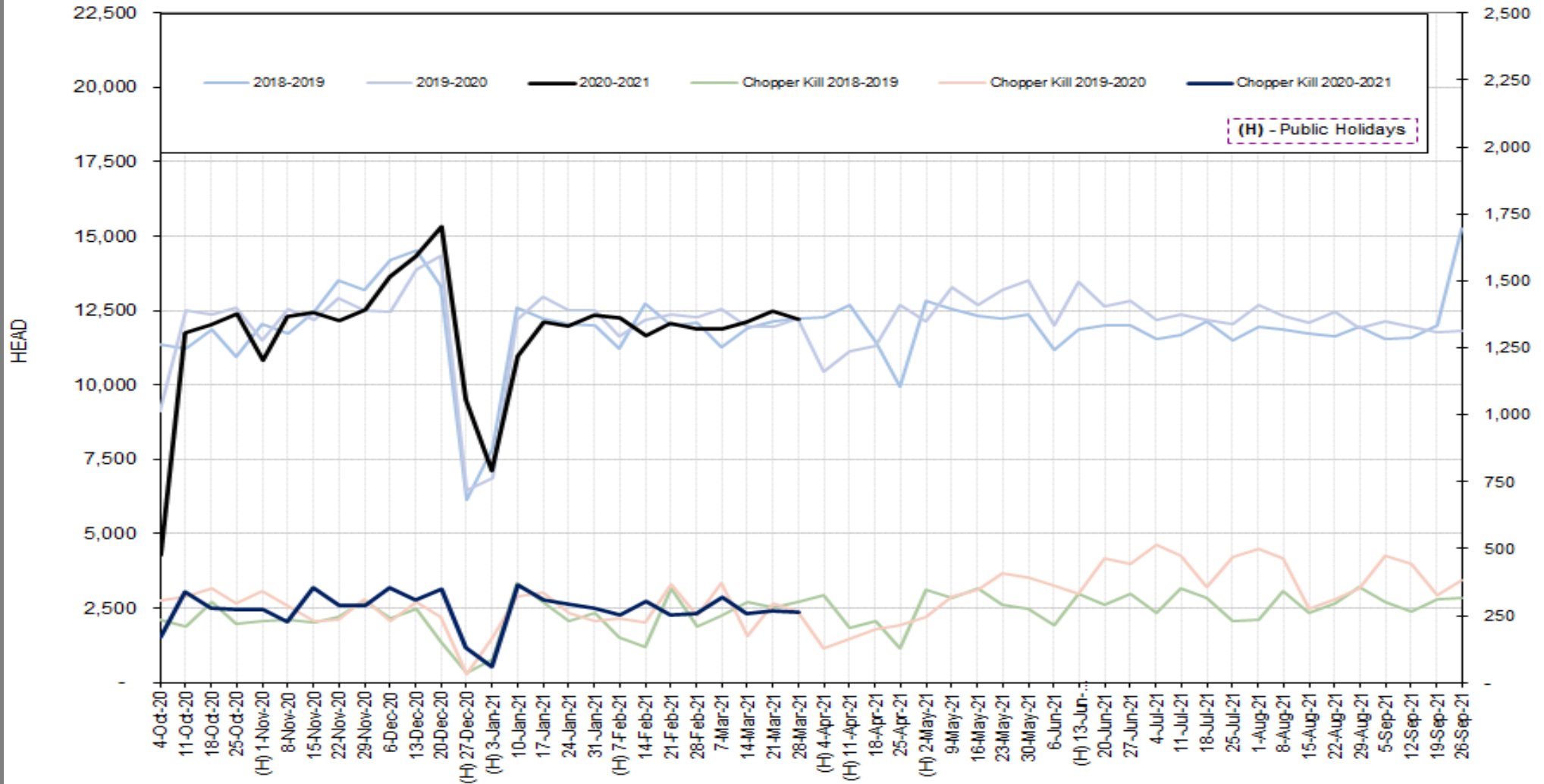
DISCLAIMER: Pork production data is provisional and may be revised without notice. All due care has been taken in preparing this information, however New Zealand Pork does not guarantee its accuracy. To the extent possible New Zealand Pork's liability is excluded, and persons acting in reliance on the information do so at their own risk. This information is licensed under the [Creative Commons Attribution-Noncommercial 3.0 New Zealand license](https://creativecommons.org/licenses/by-nc/3.0/)

WEEKLY PIGKILL REPORT

Week 26
Week ending 28th March 2021



TREND IN THE WEEKLY PIG KILL



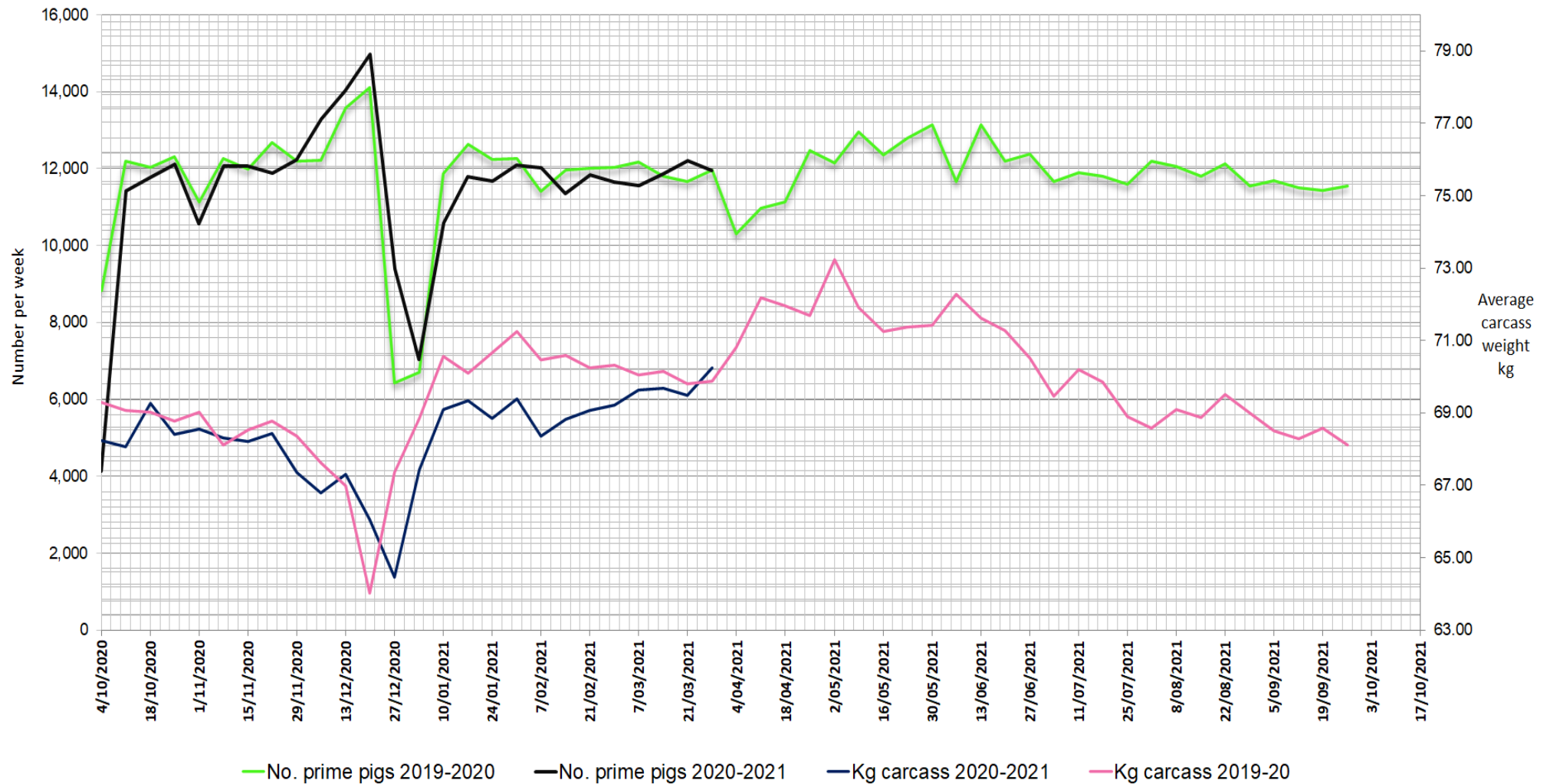
DISCLAIMER: Pork production data is provisional and may be revised without notice. All due care has been taken in preparing this information, however New Zealand Pork does not guarantee its accuracy. To the extent possible New Zealand Pork's liability is excluded, and persons acting in reliance on the information do so at their own risk. This information is licensed under the [Creative Commons Attribution-Noncommercial 3.0 New Zealand license](https://creativecommons.org/licenses/by-nc/3.0/)

WEEKLY PIGKILL REPORT

Week 26
Week ending 28th March 2021



WEEKLY PIG KILL DATA (Prime pigs)



DISCLAIMER: Pork production data is provisional and may be revised without notice. All due care has been taken in preparing this information, however New Zealand Pork does not guarantee its accuracy. To the extent possible New Zealand Pork's liability is excluded, and persons acting in reliance on the information do so at their own risk. This information is licensed under the [Creative Commons Attribution-Noncommercial 3.0 New Zealand license](https://creativecommons.org/licenses/by-nc/3.0/)