

# Natasha Jones

## Summer Placement Trainee



*This summer I have been on placement with De Group Piling learning about piling and what it is like working as an engineer. I am in my first year studying Engineering at the University of Warwick. During my time here I have been able to put into practice some of what I have learnt at university. The extensive experience I have had on site will help inform my designing giving me more consideration for how things are built rather than just the final product. This placement has motivated me to further my knowledge in engineering and I now have a greater appreciation for the work and planning that goes into building projects.*

### **What led you to a career in engineering?**

Engineering is all about solving the problems in the world around us using your knowledge and initiative. As a creative but also academic person I was very drawn to this.

### **What is the best part of your job?**

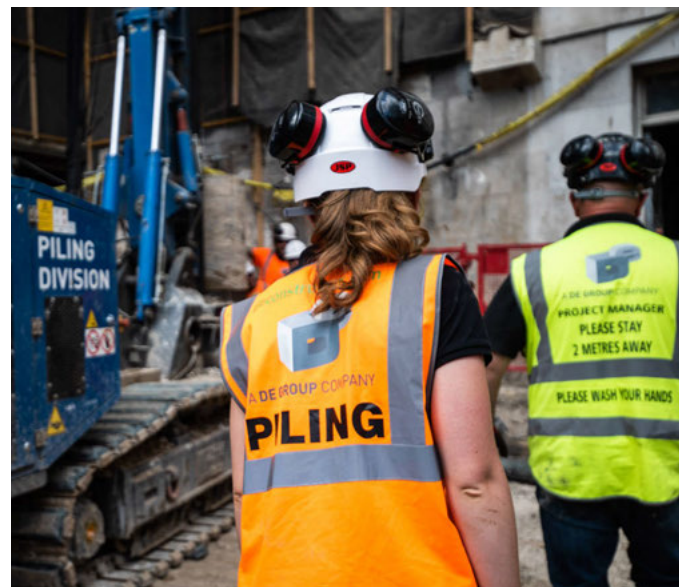
I have really enjoyed the hands-on part of the job: going on site doing the quality assurance checks and seeing the progress each day. Finding and solving the complications that we come across during the job is always interesting and exciting.

### **And what is the most challenging?**

There are many challenging parts of the job – I think that is why I enjoy it so much. Being here is very different to university and so there is always a lot to learn and pick up on.

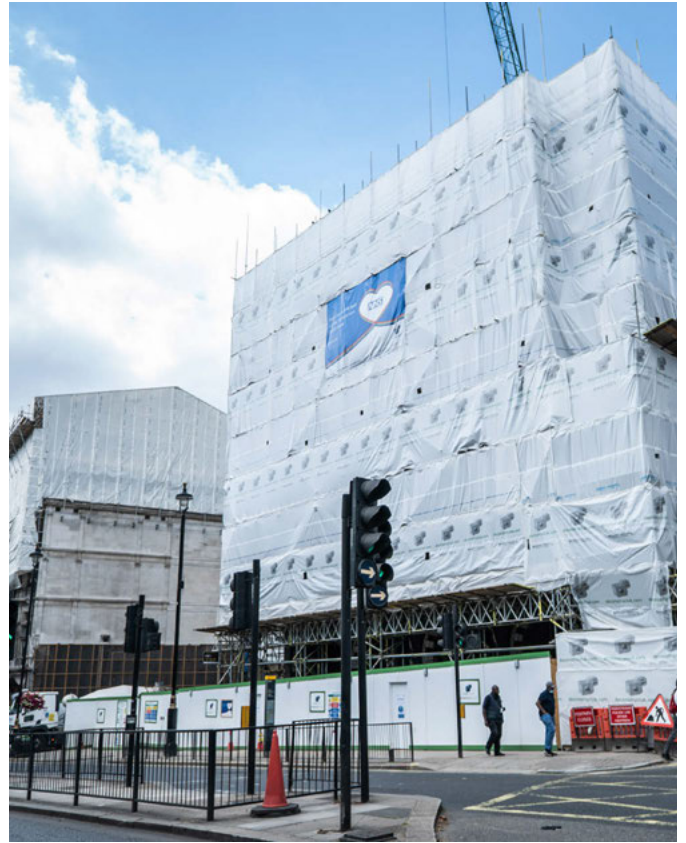
### **What advice would you give to someone looking to do a placement in the industry?**

Go for it! I have had a great time working here and have learned so much that I would never have come across at university. Have an open mind and apply for lots of different things; you never know where you might end up.



## Cambridge House

The DE Group Piling Division are currently busy installing a secant piled wall at Cambridge House, Piccadilly using their Hutte 204 restricted access piling rig. This involves the installation of 160nr 600mm diameter piles to depths of up to 27m, and heavily reinforced with a full length 8B40 sectional cage. These new piles will provide the below ground structure for a new triple basement at the frontage of the Grade I listed building. Natasha has been tasked to assist with the quality assurance recording of our work, including checking pile depth and verticality, ensuring that the cage sections have been correctly coupled together and are of the correct length and quality, monitoring the pile concrete strength and slump and keeping accurate daily records. This also involves daily coordination with the other trades, including Deconstruct's in-house steel team who are plunging King Post Universal Columns into a number of piles for temporary works purposes.



### **Richard Hayman-Joyce, Piling Director for DE Group Piling said:**

*Natasha's enthusiasm and understanding of the complex piling activities we are undertaking has been great to see. It is hugely important that as an industry we continue to develop the interest of our next generation and what better way to do so than on one of the most complex ground engineering projects in central London. We will look forward to welcoming Natasha back to our projects for the remainder of her education and hopefully beyond.*

