

# SunBrush TrackFlex

Versatile Solar Cleaning Solution



## Features & Technical Specifications

**SunBrush USA Inc**

7565 Commercial Way, Suite F  
Henderson, Nevada 89011  
United States

+1 (702) 749-7865

[www.sunbrush-usa.com](http://www.sunbrush-usa.com)



# TrackFlex Features



## 1 TrackFlex Effect

The TrackFlex ram enables boom angle adjustment which offers effective cleaning of tracking systems all day long. It also caters for narrow row width as the carrier vehicle is brought closer to the panels. Operates in rows as narrow as 4'6".

## 3 Transport Position

Hydraulic ram allows for the folding and safe transport of the SunBrush on the right hand side of the carrier vehicle. Controlled from the SunBrush joystick.

## 5 Freely Pivoting

The brush system is suspended via a freely pivoting hanging point. This enables the brush to self regulate its angle as the panels track throughout the day and/or ground contours vary.

## 7 Joystick Control

Intuitive can-bus joystick control offers safe and easy operation from the tractor cab.

## 2 WashTronic Float System

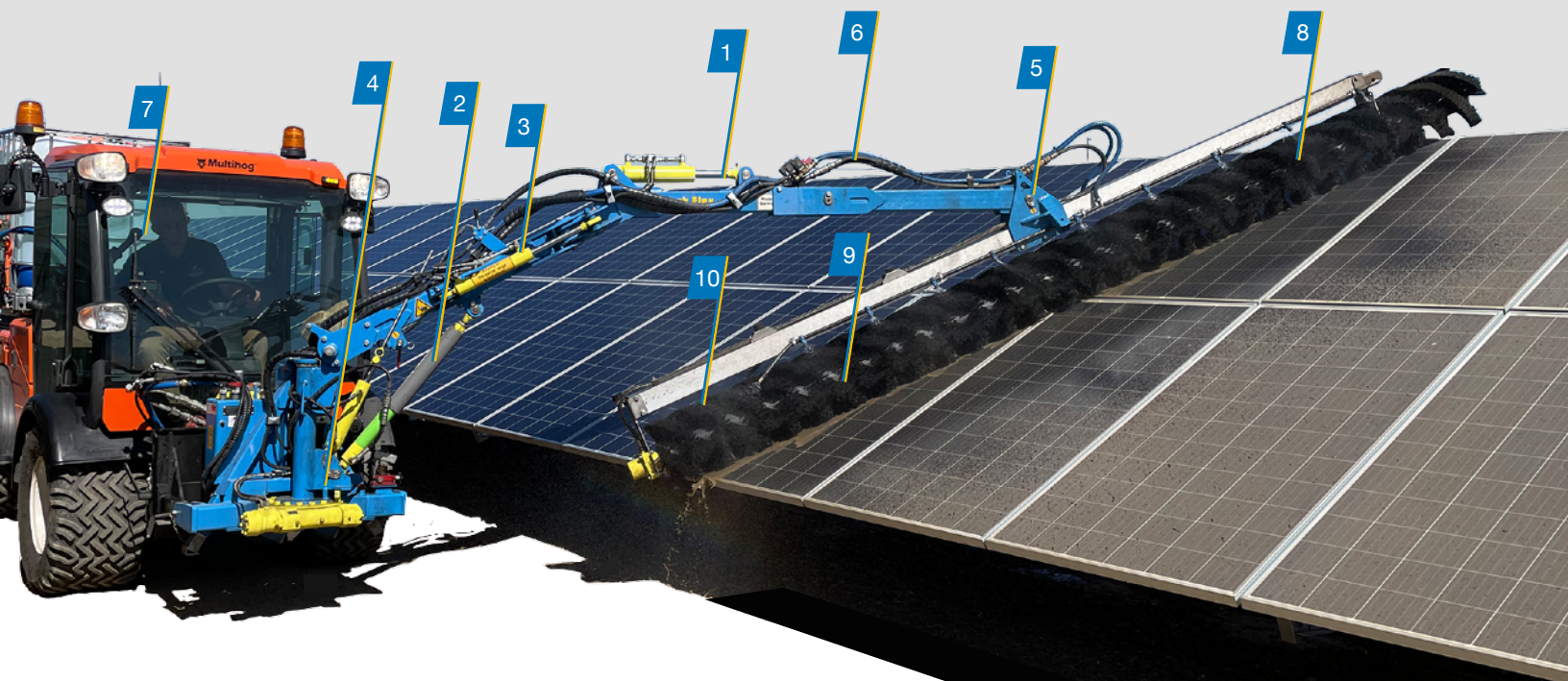
Our patented nitrogen accumulator float system *WashTronic* offers constant and controlled pressure between the brush and panels, regardless of ground contours. Built as standard on every SunBrush we can guarantee a consistent, even clean with no damage.

## 4 180° Cleaning

Hydraulic swivel motor allows for cleaning on the right and left of the carrier vehicle.

## 6 Integrated Wet Cleaning

Water lines are built as standard throughout the machine. Pre-soak and rinse settings are controlled by the SunBrush joystick providing a thorough clean.



## 8 Brush Options

14", 20" and Soft Brush options offer flexibility to cater for different panels and arrangements.



**14" : 14"** Brush is the most popular brush option. Designed for all fixed tilt arrays and the majority of tracking systems.

**20" : 20"** Brush is designed specifically for NexTracker systems. The longer bristles can pass straight over the bearing assemblies.



**Soft** : Soft Brush is specifically designed for panels with anti-reflective coating. It is a far softer brush and provides a less proficient clean than the bristle options.



## 9 Brush Lengths

Different brush lengths are available depending on the array to be cleaned. Brushes are easily interchangeable and range from 10ft to 25ft.

Panel Arrangement	Approx Depth*	Required Brush Length
Single Portrait	6ft	10ft
Double Portrait	12ft	15ft
Triple Portrait	18ft	20ft
Four Landscape	12ft	15ft
Six Landscape	18ft	20ft
Four Portrait	24ft	25ft

\*assuming 6'x3' panel

## 10 Certified Brush

Scan this QR Code for the official wet & dry cleaning study results carried out by the University of Applied Sciences Ulm.





# TrackFlex Accessories



## HotWater 200

- More effective removal of dirt, dust & grime.
- Enables reduction of water usage with a far superior cleaning effect.
- Reduces temperature differential between water and panels, therefore less risk of thermal shock.
- Heater is powered by built in diesel tank.
- Mounted on IBC Carrier Console.



## IBC Carrier Console

- Mounts on tractor rear 3 point linkage.
- Carries a 250gallon water tank on pallet fork frame.
- Transport position fixing bars included.
- Transfer water pump available for rapid refill.
- Trailed carrier console available for units without rear 3 point linkage.



## Brush Extensions

- 18" & 36" Brush extensions available to enable further cleaning flexibility.
- Extensions slide into brush tube with no extra fixing required.
- Water pipe extension also available when 36" extension attached.





# TrackFlex Specifications



## Cleaning Output Data (6' x 3' Panel, 350W)

Brush Size	10ft	15ft	20ft	25ft
Panel Arrangement	1 Portrait	2 Portrait	3 Portrait	6 Landscape
Panels/hour*	1609	3218	4,827	6,033
MW/Hour*	0.56	1.12	1.68	2.11
Nozzles No.	14	22	26	28
Water Usage	4.5 gpm	6.5 gpm	9 gpm	9 gpm

\* does not include: end of row turn time, approx 1 minute, or water refill time, approx 5 mins

## SunBrush General Data

Cleaning System	Rotating Bristle Brush, Wet or Dry
Cleaning Speed	1mph
Brush Lengths	10ft, 15ft, 20ft, 25ft
Brush Extensions	18" & 36"
Brush Type	14" Bristle = Standard Brush, for vast majority of systems 20" Bristle = NexTracker Systems Soft Brush = Thin film
Weight	1100 - 1300 lbs
Controls	Proportional Can-Bus Joystick
Float Safety System	WashTronic, Patented Nitrogen Accumulator Float Mechanism
Swivel Range	180°, to enable cleaning on the left and right of Carrier Vehicle.
Nozzles	Lechler 120° Nozzle, 16" Spacing
Water Settings	Single or Double Sided, controlled on joystick.



**Your local authorized dealer :**



**SunBrush USA Inc.**  
7565 Commercial Way, Suite F  
Henderson, Nevada 89011



**(702) 749-7865**



**info@sunbrush-usa.com**



**www.sunbrush-usa.com**