

RANE Threat Intelligence

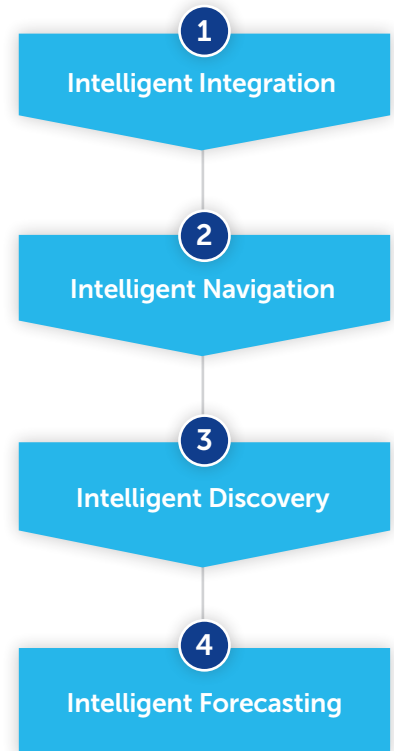
Strategic and Tactical Intelligence for Global Organizations

Identifying and mitigating threats to employees and business locations is mission-critical for organizations looking to ensure the safety of personnel, meet duty to care obligations, and provide business continuity.

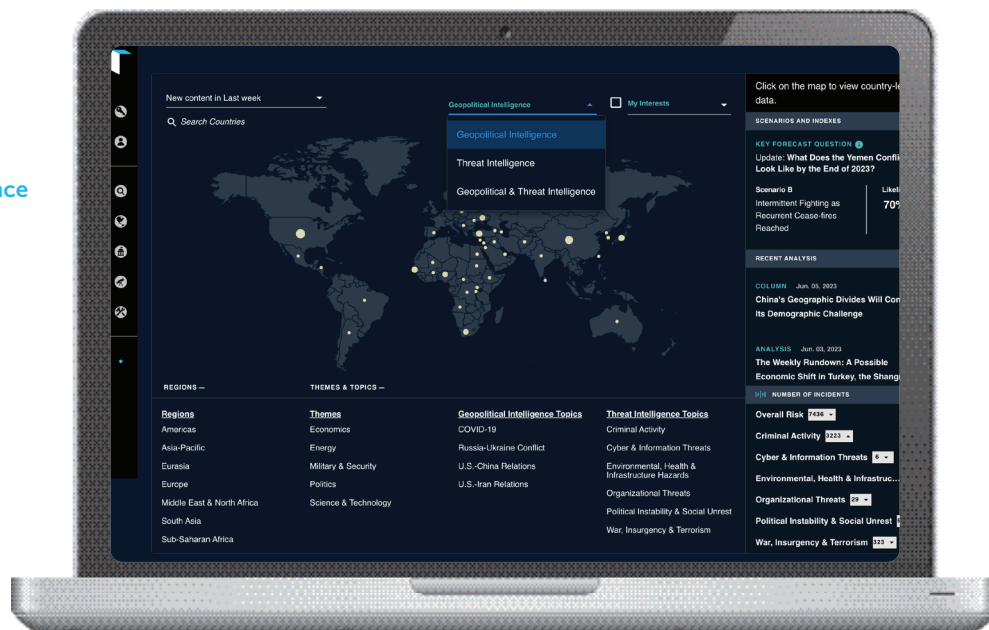
RANE's **Threat Intelligence for Security Professionals** can help you meet these challenges by enabling you to better prepare for and respond to a full range of security risks. Threat Intelligence provides security professionals the intelligence to anticipate, monitor, and mitigate risks to people, assets, and interests around the world.

- **Objective security threat intelligence covering the global landscape**, with forecasts that help you anticipate where physical and cyber risks are likely to head.
- **Ongoing threat monitoring with an interactive, map-based dashboard**, enabling you to monitor how events evolve over time and what alternative scenarios could emerge.
- **Direct access to global security analysts and a network of security experts** to tap into deep, knowledgeable expertise and mitigate the impact of security threats.

RANE's intuitive design gets to the analysis you need quickly.



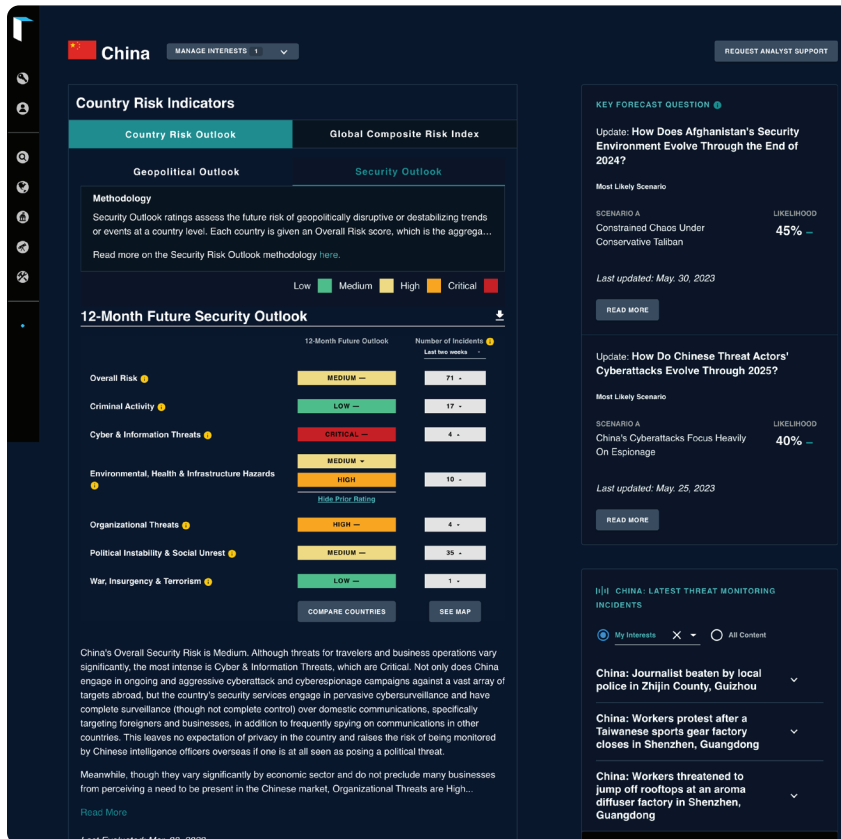
Threat Intelligence
is a professional
business
application
focused on
security threats.



1 Intelligent Integration

Strategic and tactical intelligence in one product.

- Threat Intelligence combines our security and geopolitical analysis into a single intelligence product. One login gives you access to forecasts, event-driven research, risk scores, and country risk outlooks on a global basis.
- User-specific preference settings that enable push communications across the security or geopolitical risks that are of interest to you.
- Access to in-house analysts for briefing sessions on how events are projected to move and what your organization can do to protect itself.



2 Intelligent Navigation

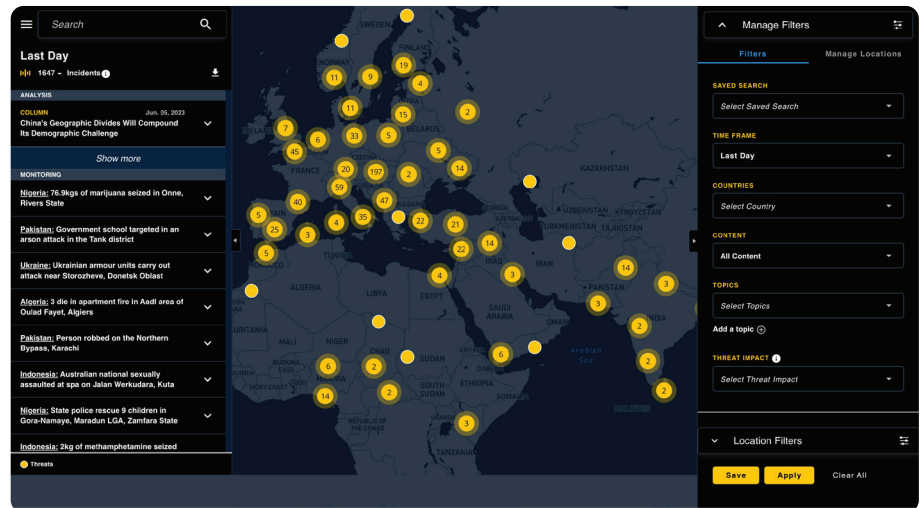
Streamlined, fully user-driven experience to easily zero in on what matters to you.

- Visual, map-based navigation by country, region, or risk/threat category. Easily add your locations directly onto the map to monitor the local threat environment.
- Risk coverage addresses criminal activity; cyber + information threats; environmental, health, + infrastructure hazards; political instability + social unrest; organizational threats; and insurgency + terrorism.
- Detailed, geospatial analysis allows you to see where any incident occurred in the world (city- and street-level views), and to understand the context in which the event happened. Dynamic geofencing capability for customized security-event assessments.

3 Intelligent Discovery

Advanced filtering tools allow for efficient discovery of current and historical analysis

- Explore our 25-year intelligence repository through searches by country, region, theme, and/or interests; set and adjust preferences as global events warrant.
- Search via country, specific location or keyword. Geofencing to allow users to draw custom shapes to reflect alternative areas of interest and laser focus on incidents within.
- Monitor events over time through relevant insights or by connecting directly with our team of in-house security specialists.
- Assess the volume of security incidents over time with trending data and understand the current and historical threat level in locations you have operations or people.



4 Intelligent Forecasting

Forward-looking, enterprise-level analysis tools enhance ability to understand what happens next

- Country risk indicators to support your country risk assessments and benchmarking
- A forward-looking, analytical approach to geopolitical and security risk outlooks, along with a supplemental quantitative measure of a wider set of enterprise risk categories via the Composite Risk Index.
- Gain proactive perspectives on future threats and identify emerging changes to the security landscape with our quarterly and annual global threat forecasts.



CONTACT US for an online demonstration and we'll walk through a geography or topic of your choice to show you how our revamped analytical and forecasting capabilities can make you better prepared to do your job.