



Bactiscan™

USER MANUAL

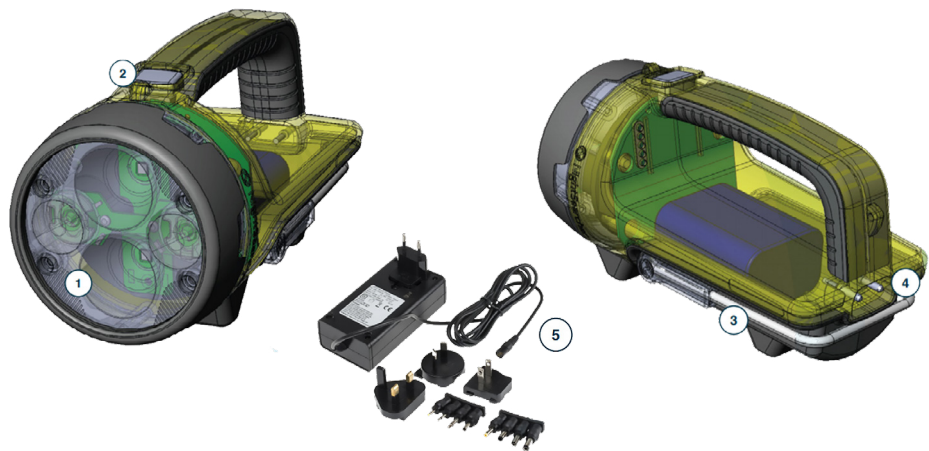
INTRODUCTION

Thank you for purchasing the EIT Bactiscan™ rechargeable bacteria and biofilm detection lamp, our latest innovation offering an all-in-one solution that combining a high performance lamp in a single lightweight, IP67 rated compact unit.

Rechargeable Bacteria and Biofilm Detection Lamp

PARTS:

1. Lens
2. On/Off Button
3. Adjustable stand
4. Charging base
5. DC charger



Important Warnings

Please read these instructions carefully to ensure the safe and effective use of this product.

1. Read manual before use•
2. Always use the charger supplied, never use a damaged charger or alternative charger•
3. Disconnect from any power sources and switch off, before performing any routine cleaning or maintenance•
4. Leave servicing to a qualified person. In

case of any problems or questions please contact your local Authorised Bactiscan™ Reseller or contact EIT direct at support@eit-international.com•

5. Do not shine the light directly into people's eyes, as it may damage their eyesight•
6. Keep out of reach of children

RECHARGEABLE BACTERIA AND BIOFILM DETECTION LAMP

With Bactiscan's™ unique wave alternating UV system, Bactiscan™ enables food processors to immediately isolate Biofilms, mould and bacteria such as salmonella and E.coli and many other contaminants are easily located and identified with Bactiscan™ which makes the remediation job much faster and therefore more cost effective.

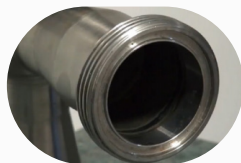
These contaminants are often undetectable using other methods such as white light and UV lamps. With Bactiscan™ you can light up the entire surface and get an immediate result, so within seconds you can pick things up that would take hours with any other method.

HANDHELD BACTERIA AND BIOFILM DETECTION SYSTEM

Environmentally friendly wave altering UV to quickly identify areas harbouring bacterial contaminants such as E.coli, listeria and salmonella which are often missed under standard white light or UV lamp.

Normal View

Item looks clean and normal under white light or standard UV



Bactiscan™ View

Clearly reveals contamination



Specification

Runtime	
Product	Bactiscan™
Power On	1h 30mins
Charge Time	6hrs 30mins
IP Rating	IP67
Battery	7.4V 6.6Ah Li-ion
Impact Resistance	1.5 Metres
Charge Base	Yes
Vehicle Charger	Yes
Dimensions	250 x 125 x 120 (mm)
Weight	1.0KG

OPERATING THE BACTISCAN™

Bactiscan™ illuminates a surface via 4 separate UV lights. These lights are UV-A type and are safe for short use. It is always recommended that the user wear eye protection (not supplied) when operating Bactiscan™. To switch ON, simply hold the grey button and the Bactiscan™ will turn on. To turn the lamp OFF, release the grey button.



CHARGING

1. Slide the Bactiscan™ inside the charging base, push until it slots in the back and connects with the charging ports.
2. Connect the charger lead into the input socket at the back of the charging base.
3. Plug the charger into a suitable socket outlet. Turn switch on. The indicator on the charger will illuminate red when charging and green when fully charged.
4. To release the Bactiscan™ from the charging base, hold and pull the release levers towards you, use your thumb to push the Bactiscan away from the charging slot as shown in picture.
5. Once the Bactiscan™ is released slide the lamp out of the charging base. The Bactiscan™ unit is ready to be used.



Bactiscan™ uses smart battery technology. When the battery is fully charged the battery will fall into sleep mode and will maintain a full charge via trickle charge. It is safe to leave Bactiscan™ plugged in whilst in its cradle.

Please note: The battery will reach optimum performance after 5 complete discharge/charge cycles.

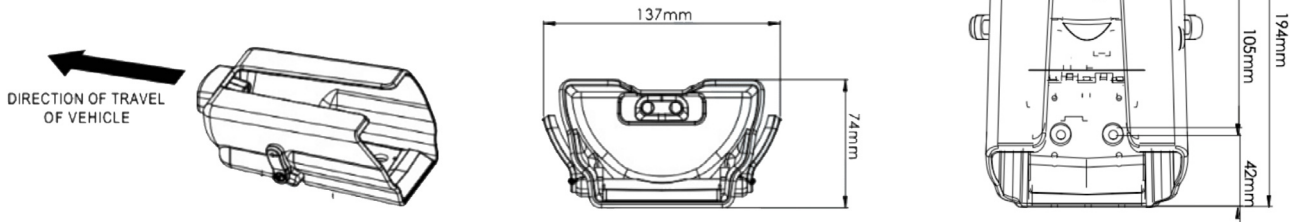
MOUNTING THE CHARGING BASE

Mounting the charging base The Bactiscan™ lamp is supplied with a charging base, providing a convenient way to charge it. The base can be used flat on a desk, or fixed on a wall or a vehicle. The charging base has four mounting holes, measurements are shown in Figure 1. Make sure the M5 fixings screws used to mount the charging base, are strong enough to support the weight of the Bactiscan™. Take care not to over tighten the fixings and mount on a flat/level surface, so the charge base isn't distorted or damaged.



Figure 1

Holder may be mounted on either a horizontal or vertical panels. Mount using four M5 fixing screws.



SAFE DISPOSAL OF WASTE ELECTRICAL PRODUCTS AND BATTERIES

If at any time, you need to dispose of this product or parts of this product: please note that waste electrical products and batteries should not be disposed of with ordinary household waste. Recycle where facilities exist. Check with your local authority for recycling advice. Alternatively, Yoda Health & Environmental Solutions is happy to take receipt of this product at end-of-life and will recycle it on your behalf.



WARRANTY

The Bactiscan™ products have a 1-year standard warranty on all manufacturing defects and 1-year warranty on all rechargeable batteries from the date of purchase.

Yoda Health & Environmental Solutions warrants this product free from defects in material and workmanship for a period of 1 year from the date of purchase. This warranty does not cover damage caused by misuse or abuse, accident, the attachment of any unauthorised accessory, alteration to the product, or any other conditions whatsoever that are beyond the control of Yoda Health & Environmental Solutions.

CAUTION!

Modifications not expressly approved by EIT International may void the users authority to operate the equipment. The removal of any panel or components, or to open the sealed Bactiscan™ casing will render the equipment damaged and will void any Warranty in place (see Page 7- Warranty) . Damaged Bactiscan™ unit through the malice of any third party will render the equipment written-off and the user will be liable for all costs associated for repair or replacement of the unit.

Yoda Health & Environmental Solutions LTD. is registered in the Republic of Ghana under number CO060905654 and the Federal Republic of Nigeria under number 1801857.

BEAVER HOUSE - HEAD OFFICE
AGOSTINHO NETO RD
AIRPORT RESIDENTIAL AREA
PO BOX OS 2778
ACCRA GHANA

ENQUIRIES@YODAHES.COM

General/Sales: GH: +233 59691 4339
NG: +234 81031 74193
Support: GH: +233 24102 9940
NG: +234 81031 74193



FOR FURTHER INFORMATION, VISIT
YODAHES.COM