

COSASCO® ACCESS FITTING ASSEMBLIES

Request A Quote



Flarweld



Buttweldolet



Socketweld



NPT

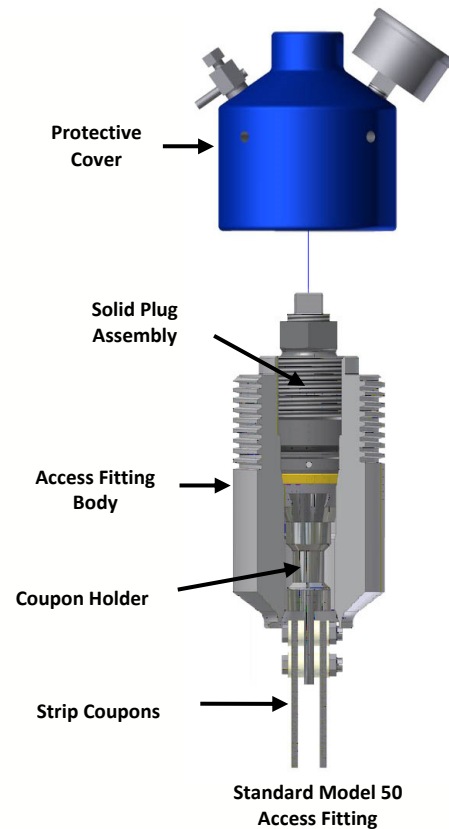


Flange

The Cosasco® Access Fitting Assembly is the key to the concept of “Access under pressure - any time, any place”. When used with a Cosasco Retriever and Service Valve, the Access Fitting Assembly permits safe, easy insertion and retrieval of corrosion and erosion monitoring systems as well as preventive maintenance devices for injecting inhibitors or for sampling, etc. while under full operating pressure. Cosasco offers a variety of options for the Access Fitting Assembly, including Tee-type for chemical injection, Severe Service with Hastelloy Insert for harsh environments, and Internal ACME threaded for bottom-of-the-line positions where solids are present. The access fitting consists of the body and a hollow or solid plug assembly. A protective cover is also available and recommended for all applications.

Features

- **Mounting – Flarweld, Buttweldolet, Socketweld, NPT, and Flange.**
- **Standard Temperature Rating with Viton/Teflon Seals:
-From -15° F (-26° C) Up To +400° F (+204° C)**
- **Available Temperature Rating with Optional Seals:
-From -70° F (-56° C) Up To +450° F (+232° C)**
- **Pressure Rating – 6000 PSI /41.3 MPa Working
-Model 56, 57, 58 as Flange Rating**
- **Meets NACE MR0175 and MR0103**
- **Canadian Registration (CRN) and Conformity to Pressure Equipment Directive (PED)**



COSASCO®

Standard Access Fitting Assemblies

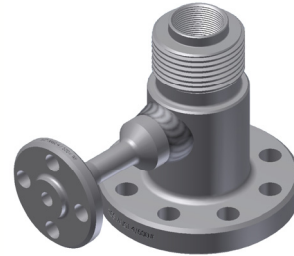
The Cosasco Access Fitting Body is available in several standard mounting configurations, including Flarweld, Buttweld, Socketweld, NPT, and Flanged. Access fitting bodies are available in a wide variety of materials. Typically, the access fitting body material will be chosen to be compatible with the pipe or vessel material. See individual data sheet for more details and ordering information



Standard Model 50 Flarweld

Side Tee Access Fitting Assemblies

When injection of treatment chemicals or sampling of the process is required it is preferable to use an access fitting with side tee. They are also used with sand monitoring probes. Tee fittings incorporate a 1/4", 1/2", 3/4", or 1" NPT threaded outlet on the side of the fitting body, with optional Socketweld, Buttweld, and Flanged outlet to suit the type of service. The addition of a tee adds between 1 and 3 inches to the height of the standard access fitting (5.25") according to the diameter and rating. See individual data sheet for more details and ordering information.



Model 57 2" ANSI Flanged with ANSI RF Side Tee

Internal ACME Threaded (AT) Access Fittings Assemblies

Cosasco ACME Threaded (AT) access fittings have internal female ACME threads that receive either a solid or hollow male ACME threaded plug. The ACME Threaded access fittings are advantageous in applications where the process contains solids and debris. Access Fittings that are mounted bottom-of-line are especially susceptible to solids getting lodged in the threads of the plug assembly. ACME threads have courser threads with a larger pitch and a narrower angle than standard v-threads. This helps prevent the plug assembly from getting jammed in the access fitting due to debris caught in between the threads. See individual data sheet for more details and ordering information



Model 50 with Internal ACME Threads (AT)

Severe Service (CR) Access Fitting Assemblies

Cosasco Severe Service (CR) Access Fittings have a patented corrosion resistant insert to withstand severe applications. By using an insert made of Hastelloy C276, the seal seat areas and threads are protected from corrosion damage. Hastelloy C276 is a strong passive film forming material. Consequently, as a cathode in a galvanic cell, it tends to pass very little current. This tendency and the large anode-to-cathode area ratio eliminate galvanic corrosion. For non-tee access fittings only (Consult factory for Side-Tee options). See individual data sheet for more details and ordering information.



Model 50 with Hastelloy® C276 Insert (CR)

Cosasco

11841 Smith Avenue
Santa Fe Springs, CA 90670, USA
Tel: 1-562-949-0123
Email: sales@cosasco.com
Web Site: www.cosasco.com

©Rohrback Cosasco Systems, Inc. All rights reserved

The contents of this publication are presented for information purposes only, and while effort has been made to ensure their accuracy, they are not to be construed as warranties or guarantees, express or implied, regarding the products or services described wherein or their use or applicability. We reserve the right to modify or improve the designs or specifications of our products at any time without notice.



FM 10694

AF-Assemblies-DS rev-B
Rev. Date: 08/10/2017

WWW.COSASCO.COM