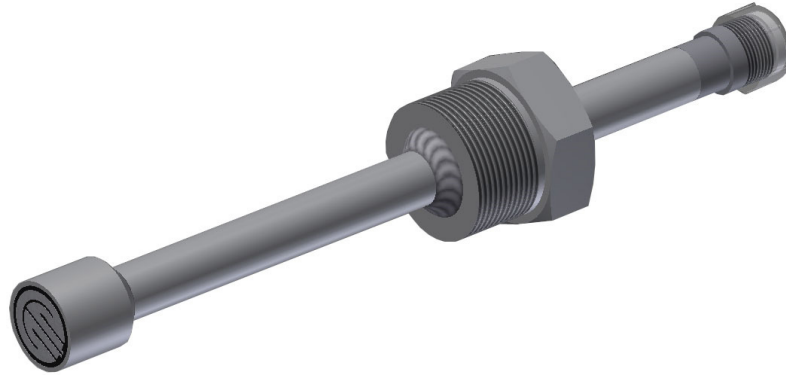


Electrical Resistance (ER) Probes

Request A Quote

MODEL 2700/2705



Features

- **Flush Element**
- **Mounting - 1 1/2" NPT Fixed (2700)**
- 3/4" NPT Fixed (2705)
- **Temp. Rating - +500° F / +260° C**
- **Pressure Rating - 4000 PSI 27.6 MPa**
- **Element Seal Material — Ryton (Model 2700)**
— Glass (Model 2705)
- **Fill Material - Ceramic**
- **Probe Body Material - Stainless Steel**

Model 2700 and 2705 fixed process electrical resistance probes have a flat strip measuring element sealed and mounted at the end of a heavy walled stainless steel tube. The measuring element can be positioned flush with the inner surface of the pipe or vessel. Corrosion or erosion can then be measured right at this surface, and the lines may be pigged without moving the probes.

The Model 2705 is smaller in size but limited to a sensitive S8 element. For higher corrosion rate, the larger Model 2700 provides for thicker elements. These probes may be used in any organic or inorganic environment up to a pH of 9.

COSASCO[®]

MODEL 2700/2705

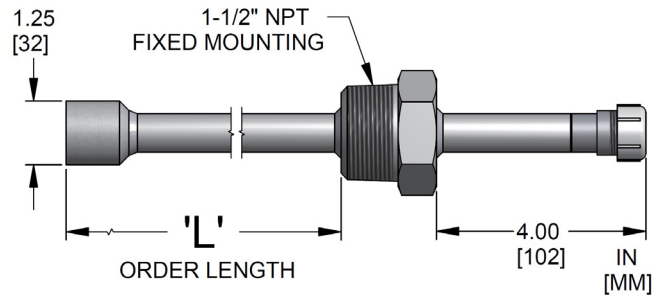
Element Availability

| UNS Number | Alloy | S8 | S10 | S20 | S40 | UNS Number | Alloy | S8 | S10 | S20 | S40 |
|--------------------------|-------------------------|------|------|------|------|--------------------------|-----------------------------------|------|------|------|------|
| C70610 | CuNi 90/10 CDA #706 | | • | • | • | N10276 | Hastelloy C-276 | | • | • | • |
| K03005 | Pipe Grade Carbon Steel | • | • | • | • | S31600 | 316 S.S. | | • | • | • |
| A106FRB | A106 Gr. B | | • | • | • | S31603 | 316L S.S. | | • | • | • |
| N06625 | Inconel 625 | | • | • | • | S31703 | AISI 317L Stainless Steel | | • | • | • |
| N08367 | Incoloy 25-6HN | | • | • | • | S31803 | 2205 Duplex Stainless Steel | | • | • | • |
| S30400 | 304 S.S. | | • | • | • | S50200 | 502 SS (5% Cr ½% Mo) (UNS K41545) | | • | • | • |
| S30403 | 304L S.S. | | • | • | • | A333GB6 | A333 Gr. 6 | | • | • | • |
| Inches | | .004 | .005 | .010 | .020 | Inches | | .004 | .005 | .010 | .020 |
| Useful Range (mm) | | .100 | .175 | .250 | .510 | Useful Range (mm) | | .100 | .175 | .250 | .510 |

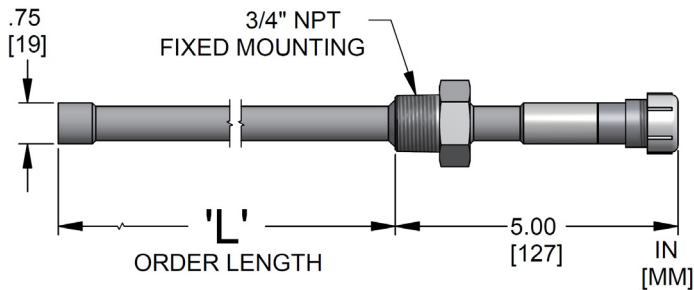
Table 1

Other element alloys or styles may be supplied subject to material availability.

Dimensions



2700 Flush



2705 Flush

MODEL 2700/2705

Ordering Information

Note: For high velocity process conditions it is recommended that Wake Frequency Calculations be performed – please contact a Cosasco representative for further details.

| Model | Retractable ER Probe | | |
|-------------|-------------------------|---|--------------------------------|
| 2700 | Complete Probe Assembly | | |
| 2705 | Complete Probe Assembly | | |
| | Code | Element Form: See Table 1 for availability | |
| | S8 | Strip, Flush (4 mil useful probe life:2705 only) | |
| | S10 | Flush Strip Element, 10 mil thickness (5 mil useful probe life: 2700 only) | |
| | S20 | Flush Strip Element, 20 mil thickness (10 mil useful probe life: 2700 only) | |
| | S40 | Flush Strip Element, 40 mil thickness (20 mil useful probe life: 2700 only) | |
| | Code | Element Alloy: See Table 1 for availability | |
| | XXXXXX | Enter UNS number | |
| | Code | Order Length | |
| | XX.XX | Order length in 0.125" increments (1.50" minimum) | |
| 2700 | — S10 | — K03005 | — 1.50 ← Example |
| 2705 | — S8 | — K03005 | — 1.50 ← Example |

Cosasco

11841 Smith Avenue
 Santa Fe Springs, CA 90670, USA
 Tel: 1-562-949-0123
 Email: sales@cosasco.com
 Web Site: www.cosasco.com

©Rohrbach Cosasco Systems, Inc. All rights reserved

The contents of this publication are presented for information purposes only, and while effort has been made to ensure their accuracy, they are not to be construed as warranties or guarantees, express or implied, regarding the products or services described wherein or their use or applicability. We reserve the right to modify or improve the designs or specifications of our products at any time without notice.

