

TLMdX[®] Guide

AASLD November 13-16, 2020

The Liver Meeting[®]

Digital Experience

Table of Contents

Leadership and Scientific Program Committee List.....	3
TLMdX® Platform Guide.....	5
Code of Conduct and TLMdX® Event Policies.....	17
Continuing Education Information.....	17
Scientific Program Schedule.....	21
Exhibitor List	89
Poster Information	90
Satellite Symposium.....	91
Product Theaters.....	95
Awards.....	99
Emerging Liver Scholars	101

Leadership and Scientific Program Committee List

The AASLD Governing Board consists of eleven members in charge of managing the affairs of the association. The Board is also responsible for reviewing, establishing and updating professional, scientific and administrative policies as outlined within the bylaws of the association. Members of the Governing Board include:

President

Jorge A. Bezerra, MD, FAASLD

President-elect

Raymond T. Chung, MD, FAASLD

Past-President

Michael W. Fried, MD, FAASLD

Secretary

Meena B. Bansal, MD, FAASLD

Treasurer

Vijay Shah, MD, FAASLD

Councilors

Laurie D. DeLeve, MD, PhD, FAASLD

Norah Terrault, MD, MPH, FAASLD

W. Ray Kim, MD, FAASLD

Councilors-at-large

John R. Lake, MD, FAASLD

David C. Mulligan, MD, FACS, FAASLD

Mary E. McCarthy Rinella, MD, FAASLD

Scientific Program Committee

Chair:

Jorge A. Bezerra, MD, FAASLD

Co-Chair:

Meena B. Bansal, MD, FAASLD

President-elect:

Raymond T. Chung, MD, FAASLD

Senior Councilor:

Laurie D. DeLeve, MD, PhD, FAASLD

Annual Meeting Education Committee:

Grace L. Su, MD, FAASLD

Basic Research Committee:

Harmeet Malhi, MD, MBBS, FAASLD

Clinical Research Committee:

Kymberly Watt, MD

Continuing Medical Education (CME) Committee:

Joseph K. Lim, MD, FAASLD

Hepatology Associates Committee:

Elizabeth K. Goacher, PA-C, MHS, AF-AASLD

Surgery and Liver Transplantation Committee:

Bijan Eghtesad, MD, FAASLD

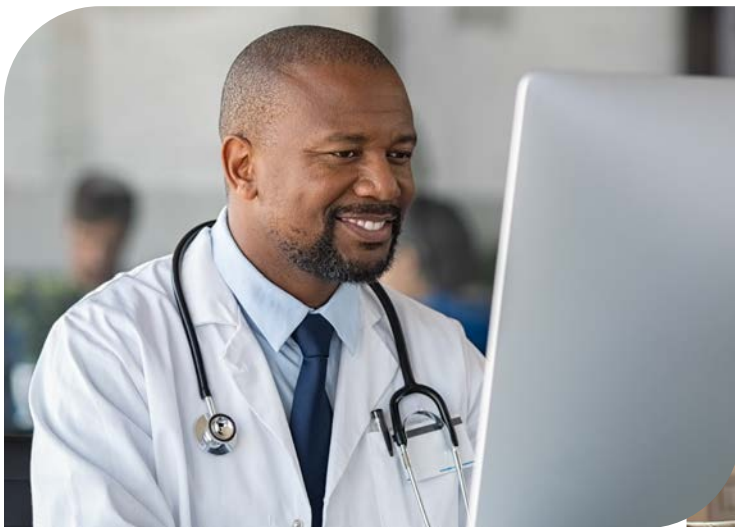
Training and Workforce Committee:

Janice Jou, MD, MHS, FAASLD

Get Involved

AASLD committees offer a one-of-a-kind opportunity to members to become active in a wide range of areas of importance to hepatology professionals. Committee members deal with the issues and challenges affecting their area of expertise within the field, and help devise strategies, plans, and programs as directed by the Governing Board and the AASLD strategic plan. The annual call for nominations is open now through January 15, 2021.

To review the full list of AASLD committees, their charges and to participate in the nominations process, visit us at aasld.org/membership/member-committees.



TLMdX® Platform Guide

Welcome to The Liver Meeting Digital Experience Platform Guide—everything you need to know to successfully navigate the TLMdX® digital environment. This guide will get you started using the TLMdX® platform, but we encourage you to login and explore prior to the start of the meeting to learn your way around.

The Liver Meeting Digital Experience™ platform will be open to registered attendees
Monday, November 9, 2020 – Tuesday, February 16, 2021.

Thank You For Your Support



Getting Started

Technical Tips and Tricks

Before signing into The Liver Meeting Digital Experience™, we recommend reviewing the following tips and tricks to ensure a smooth login process and reduce common technical difficulties.

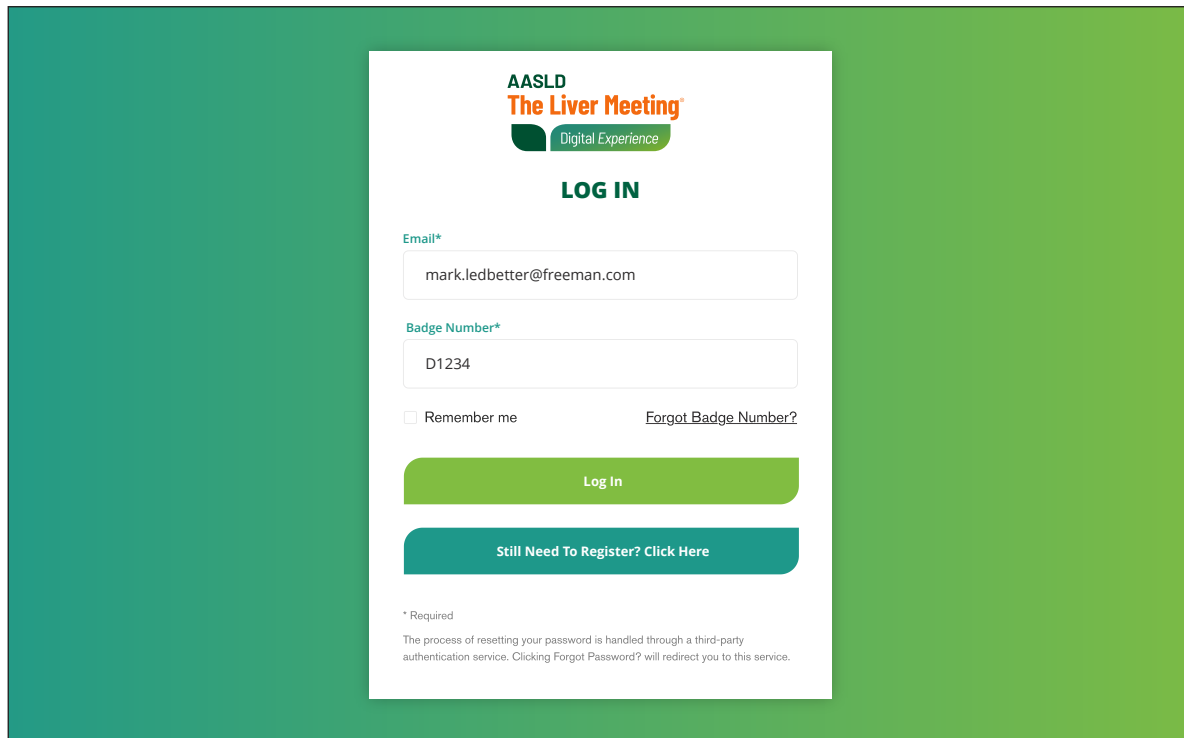
- Browsers that will best support TLMdX® include Chrome, Firefox, Safari and Edge. Internet Explorer is not supported
- You can improve your computer's bandwidth by closing programs such as Zoom, Microsoft Teams and/or other applications that you are not actively using
- We recommend disconnecting from virtual private networks (VPNs)
- If you plan to participate in the meeting from your office, have your institution's IT personnel safelist the following addresses:
 - <https://thelivermeetingdigitalexperience.org/>
 - <https://onlineeventapi.com/>
 - <https://matchmaking.grip.events>
 - <https://oepauthentication.azurewebsites.net>
 - <https://fileviewer.freemanco.com>
 - <https://www.livestream.com>
 - https://eu.jotform.com/OEP_support/freeman-virtual-support-portal
 - <https://tlmdx.aasld.org>

Logging In

There are three ways you can access TLMdX®:

- **Email Link**– you will receive an attendee email on November 9 with your login and password information
- [TheLiverMeetingDigitalExperience.org](https://thelivermeetingdigitalexperience.org)– navigate directly to the site from your preferred browser (see Technical Tips and Tricks for a list of recommended browsers)
- [TLMdX.aasld.org](https://tlmdx.aasld.org) – Once the meeting is open, you can access the platform from a link on The Liver Meeting Digital Experience™ website

Prior to the start of the meeting you should receive an email with your login and password information. Didn't receive it? Reach out to aasld@xpressreg.net for assistance.



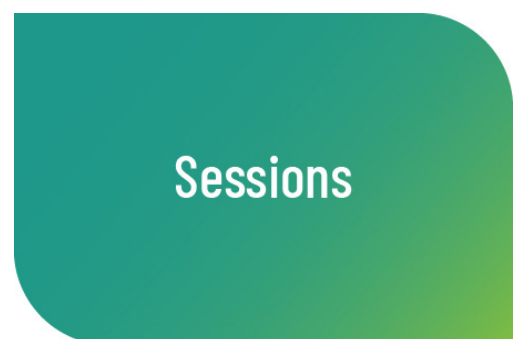
The screenshot shows a login interface for 'AASLD The Liver Meeting Digital Experience'. At the top, the logo features 'AASLD' in black, 'The Liver Meeting' in orange, and 'Digital Experience' in a green pill shape. Below this is a 'LOG IN' heading. The form includes two required fields: 'Email*' with the value 'mark.ledbetter@freeman.com' and 'Badge Number*' with the value 'D1234'. There is a 'Remember me' checkbox and a 'Forgot Badge Number?' link. A green 'Log In' button is positioned below the fields, followed by a teal button that says 'Still Need To Register? Click Here'. At the bottom, a small asterisk indicates that the fields are required, and a note states: 'The process of resetting your password is handled through a third-party authentication service. Clicking Forgot Password? will redirect you to this service.'

Fantastic Sessions and Posters and Where to Find Them

Looking up a Session

Starting on the TLMdX® homepage, click on the **Sessions** tile to view a listing of programs by day. You can view the session by clicking on each day, or you can use the filters and search bar to look up sessions by title or track (ex. NAFLD, liver transplantation, etc.).

Additionally, you can access the session page by clicking on the **Program and Posters** tab at the top of each page on the TLMdX® platform.



Adding a Session to Your Calendar

In the session description there will be an **Add to Calendar** button. By clicking on this button, you will be prompted to select your Outlook, Yahoo or Google calendar. Once selected, the session information, including a link to the session, will be added to your calendar of choice.



Add to Calendar

Joining a Session

From the TLMdX® homepage, scroll down past the tiles to the **Now Playing** section. As sessions become available for streaming, they will appear on this part of the homepage. You can click directly on the title or viewing window to enter the session. You may enter a session at any point during the stream.

Taking Digital Learning to Your Next Event

Monday, March 30th 2PM - 2:40PM

Watch Now

Viewing OnDemand Content

After a session has streamed, it will become available for OnDemand viewing in just a couple hours. While the majority of TLMdX® programming will be available for OnDemand viewing, there are a several sessions that will be streamed as a one-time broadcast. Visit the [Program Schedule](#) to review sessions that will not be available OnDemand.

ALSO AVAILABLE ON DEMAND.

Presidential Welcome Message and President's Choice Lecture with Dr. Griffin Rodgers, Director of the National Institute of Diabetes and Digestive and Kidney Diseases

Dr. Jorge Bezerra welcomes attendees to TLMdX™ and introduces the President's Choice Lecture presenter, Dr. Griffin P. Rodgers.

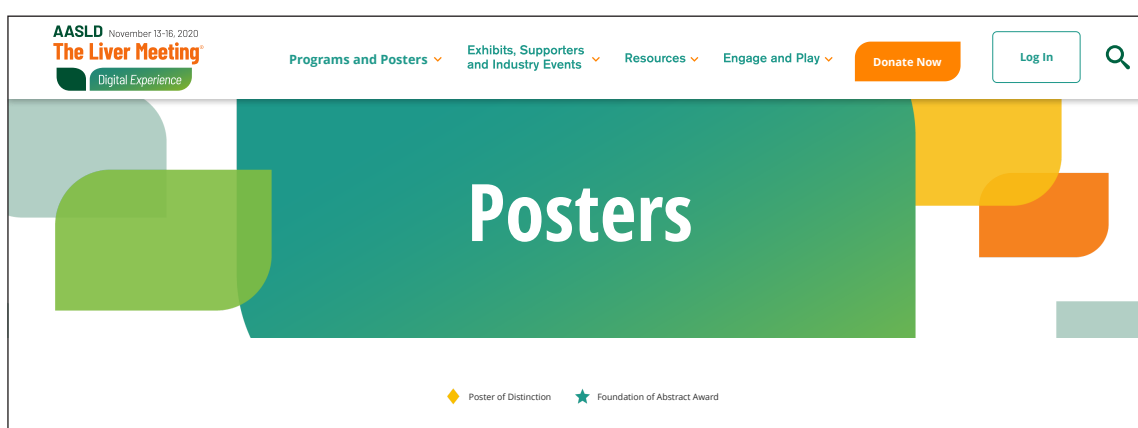
🕒 9:30 am - 10:00 am

Viewing Posters

There are three ways to access the poster area of the platform:

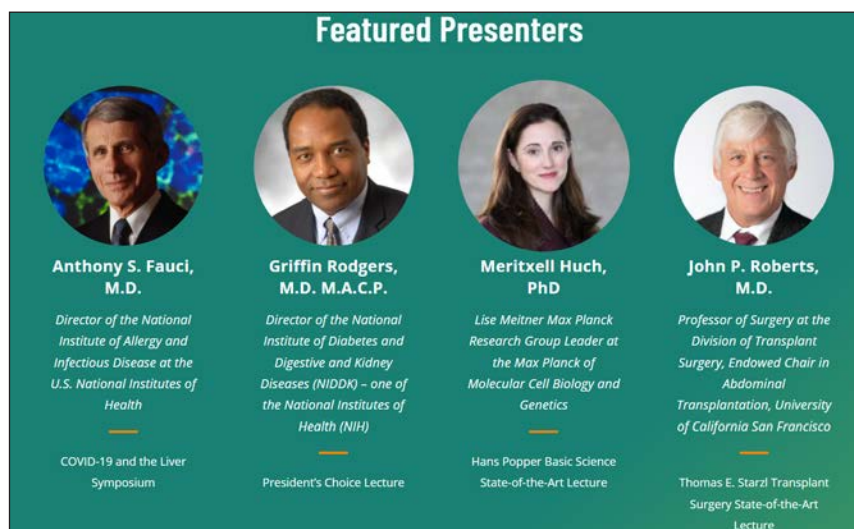
- Click on the **Program and Poster** tab in the navigation menu at the top of the page and select **Posters** from the drop-down menu
- Click on the poster banner at the top of the homepage (part of a rotating series of banners)
- Click the **Posters** tile on the homepage

Posters can be filtered by category or searchable by title and topic.



Connect with a Presenter

Navigate to your Network and Engagement Center to search for a poster presenter or speaker by name. You may add them to your list of connections or request to schedule a meeting.

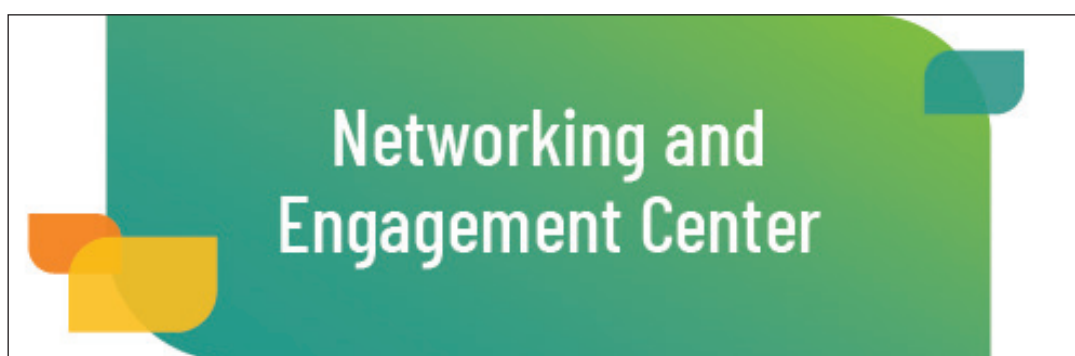


Networking and Engagement

Welcome to your Networking and Engagement Center. Here you can connect directly with other meeting attendees, schedule meetings, visit video chat lounges and more!

Navigate to the Networking and Engagement module in two ways:

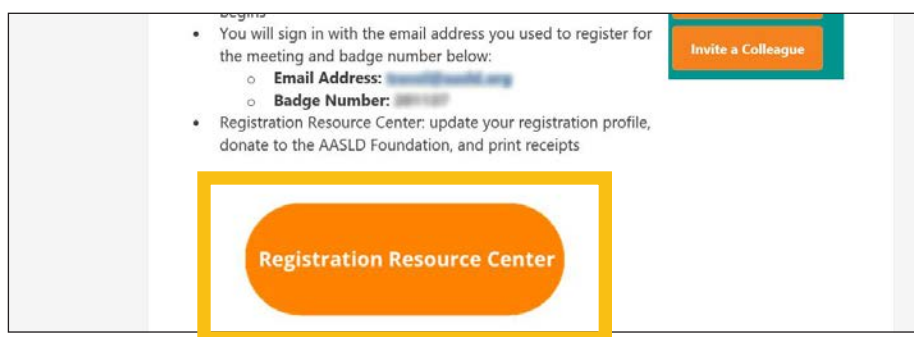
- Click on the Networking and Engagement tile on the TLMdX® homepage
- Use the **Engage and Play** drop-down menu on the navigation bar at the top of any page within the TLMdX® platform and select **Networking and Engagement Center**



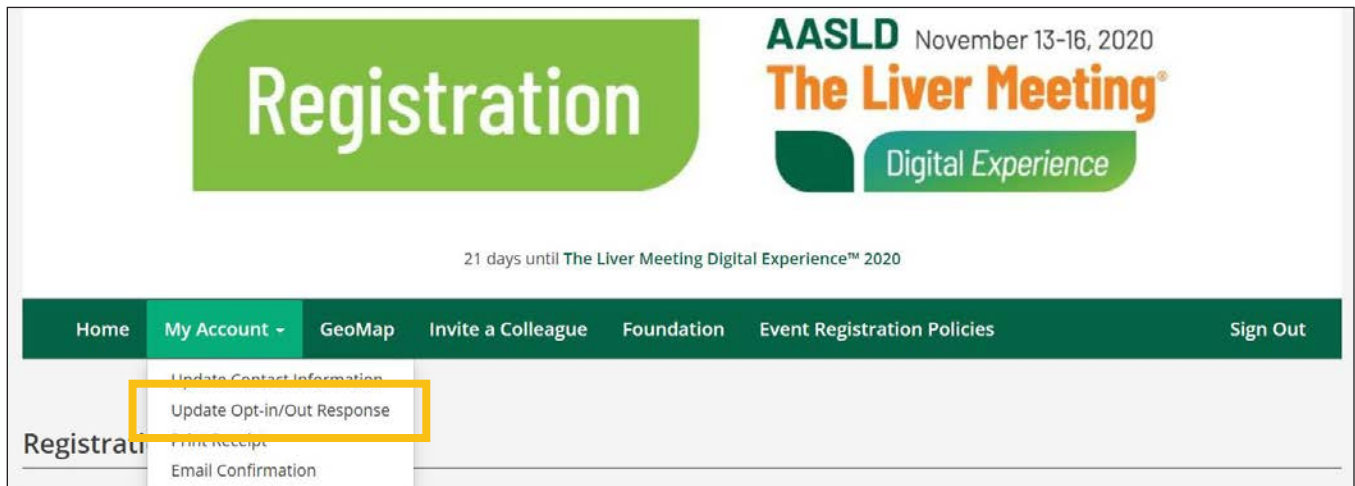
Update Opt-in Status

All TLMdX® registrants can update or confirm their opt-in/out responses through the Registration Resource Center (RRC). Instructions below will assist you in either confirming or changing your opt-in/out selection.

1. Open your TLMdX® Registration Confirmation (where you received your login credentials).
2. Click on the **Registration Resource Center** button shown just below your login credentials. The button takes you to your individual record.



3. The Registration Resource Center has a tab called "My Account" and once clicked the drop-down choices include "Update Opt-in/Out Responses."



4. Make your changes and click **submit** at the bottom right of the screen. Please be aware the update may take several minutes.

Opt-in/Out: Networking, Exhibitors and Supporters

If you have chosen to opt-in and later decide to opt-out, AASLD, CDS, and Freeman cannot be held responsible for information already provided during networking and exhibitor interactions.

Networking Experience *

Networking with attendees, presenters, and staff is an important component to The Liver Meeting Digital Experience™. In order to participate in these networking opportunities, you must agree to have your contact information shared with other conference attendees during the digital experience. This includes your name, title, email address, geographic location, and organization. To change your opt-in preference, you may visit the Registration Resource Center.

Yes (opt-in) ▼

Exhibitor and Supporter Opt-In *

During TLMdX® exhibitors and supporters will be provided with your contact information, including first name, last name, email address, organization, mailing address, and country. Do you agree to providing this information for the purposes of promotional mailing lists and sales leads for supporters, exhibitors, satellite symposia, and product theaters? I may withdraw this consent by visiting the Registration Resource Center.

Yes (opt-in) ▼

Cancel Changes

Submit

Your Profile

When you opt-in to engage with attendees on the TLMdX® platform, a profile will automatically be created for you and will auto-populate with information provided at registration for The Liver Meeting Digital Experience™. Once in the platform, you can update your profile. We recommend adding a profile picture, your interests, and include a bio if you have one.

Please note that some information cannot be modified in your profile (ex. registration category).

The screenshot shows a user profile form with the following fields and callouts:

- 1**: Profile picture of a man.
- 2**: Role label "Exhibitor Representative".
- 3**: First name "Joel" and Last name "Edwards".
- 4**: Headline "Customer Success manager at Grip | The Event Networking Solution", (Most Recent) Job Title "Customer Success Manager", (Most Recent) Company "Grip", Location "Washington D.C.", Company Size "11 - 50", Seniority Level "C-Level, Founder, Non-Executive Director", and Objective "Invest in new startups".
- 5**: Summary "Customer success manager at Grip. Looking to provide the complete event networking solution."

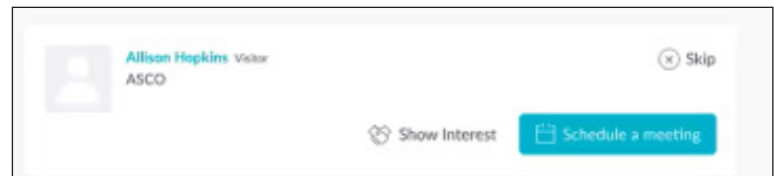
You can also access your calendar and modify your schedule from your profile window. You can block off time on your calendar or view meetings you have scheduled in the **My Schedule** section.

Scheduling a Meeting

From your Networking and Engagement Center, select a connection or search for an attendee to access their information card. Click on **Schedule a Meeting** to open a new window to check their availability. Select a date and time from the dropdown menu for a list of availability options for both you and the meeting request recipient (please note that the time zone will reflect your location). Meeting times will be available in 15 minute increments; however, meetings in progress can continue past the 15 minute mark with no interruption (up to four hours).

You can request up to 20 meetings at a time. Once you have 20 meeting requests pending, you will no longer be able to request a meeting until one or more of your requests are accepted/declined. You may only request to schedule a meeting to one party at a time. If you would like to add additional participants, please see instructions listed under **Inviting Additional Meeting Participants** section.

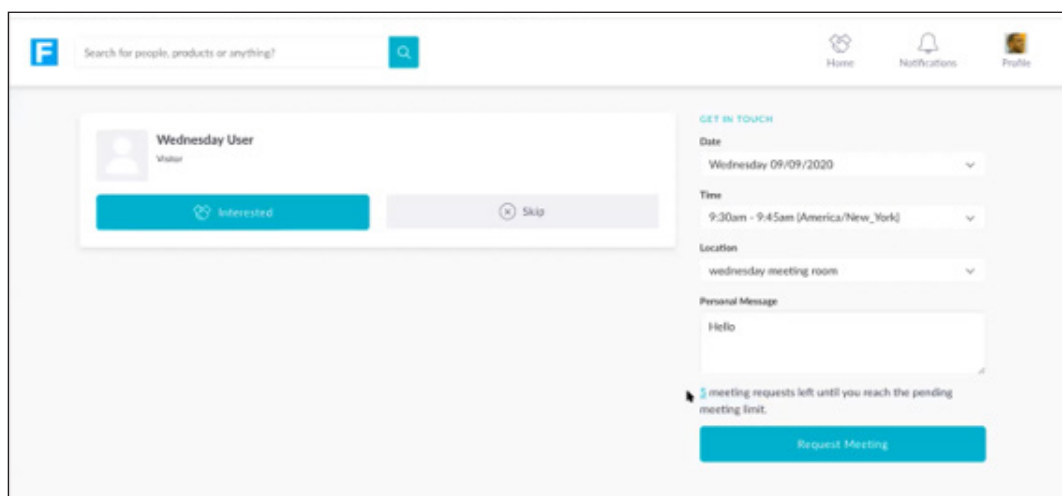
Please note that the schedule a meeting feature is only available during the meeting (November 13-16) and cannot be utilized pre- or post-meeting.



Starting/joining a meeting

Navigate to your Networking and Engagement Center to view your scheduled meetings. On the left-hand corner, click on **My Schedule** to open your accepted meetings list. Your meetings will appear in descending order from the next scheduled meeting. At the time of your scheduled meeting a button will appear prompting you to open your virtual meeting (video meetings cannot be accessed any earlier than five minutes prior to the scheduled meeting time). Clicking on this button will open a new window, featuring a virtual video screen. Meeting participants will be able to:

- Turn video function on/off
- Mute/unmute
- Share screen
- Text chat



Video Networking Lounges

Similar to the virtual meeting feature, the Networking Lounges are a space where meeting attendees can connect via video chat. There will be twenty pre-established virtual lounges and they will be open throughout the meeting. A full listing of Networking Lounges and schedules will be available in your Networking and Engagement Center, where you can also access the lounges. After the meeting, the Networking Lounges will no longer be available.

There can be up to 50 participants at a time in a Networking Lounge. Access is on a first-come, first-serve basis and conversations are not moderated or recorded. Once a lounge is at capacity, you will not be able to access it until at least one participant has left.

Discussion Boards/Chat Channels

You can access the Discussion Boards from the top navigation bar under the **Engage and Play** dropdown menu.

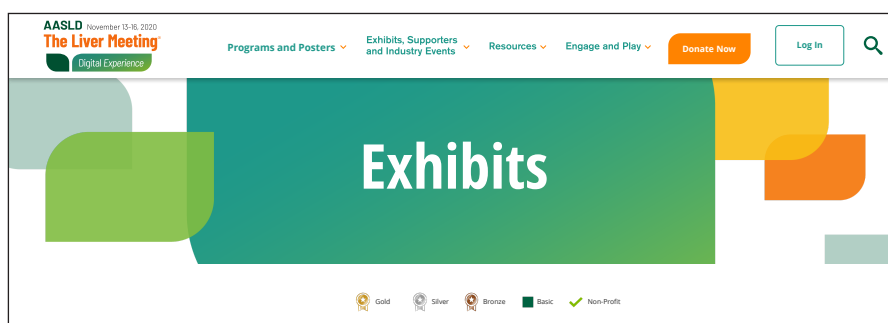
The discussion boards are a series of topic- specific text forums where attendees can connect with each other without scheduling a meeting. The discussion boards will be open to all attendees. Attendees may not create new discussion boards.

Exhibits

Explore products, services and more in the exhibit hall. There are three ways you can access the exhibits:

- Click on the Exhibits homepage banner
- Click on the **Exhibits** tile on the homepage
- Navigate to the menu bar in the top right-hand part from any page on the platform and click on **Exhibits**

Once you arrive on the Exhibits homepage, click on the tile of any of the listed exhibitors to explore their offerings.



TLMdX® Liver Games

It wouldn't be The Liver Meeting®, without a bit of friendly competition amongst colleagues. Step up to this year's challenge by visiting the Liver Games page. Click on the **Engage and Play** tab at the top of the navigation menu and select **Liver Games** for instructions.

How to play

Click. Play. Win. It's that simple! From visiting exhibit booths to simply attending sessions, you gain points towards badges just by participating in the meeting! Collect all 8 badges for exciting prizes, including gift cards, custom apparel and discounts to AASLD events.

Snap. Post. Win. It's that easy! Share your photos about your TLMdX® experience on Twitter, and/or Instagram using **#LiverSnaps** and **#TLMdX**. Each day, we will identify winning photos and award prizes. Happy snapping! And don't forget to tag AASLD and the AASLD Foundation in your photos.

AASLD Resource Center

The Liver Meeting® is the premier conference for hepatology professionals and AASLD's annual flagship event. If you're a scientist, researcher, educator or clinician working with liver disease, AASLD has professional resources and connections beyond the Liver Meeting® to support you through each stage of your career. Visit the AASLD resource center to:

- Learn more about AASLD resources, including journals, continued education materials and patient advocacy
- Explore research award opportunities
- Find out how you can support the future of hepatology
- Relax and refresh with AASLD Foundation's Wellness Center

From the AASLD Resource Center homepage, you can click on a tile corresponding with an AASLD or AASLD Foundation offering. In the booth window, click on the **Networking and Engagement** button to connect to AASLD's company profile page. From here you can connect with AASLD representatives.



Now you're ready to get started using The Liver Meeting Digital Experience™ platform.

Should you have any trouble signing into the platform, please reach out to aasld@xpressreg.net or click on **Forgot Badge Number?** from the TLMdX® platform login page.

If you experience any technical difficulties while inside the platform, connect with a technical support representative by clicking on **Tech Support** in the navigation area at the bottom of any page on the platform.

We hope you enjoy your experience.

Get the latest news on upcoming sessions and catch up on daily program highlights during TLMdX. Stay in the know with year-round updates.



AASLDNews.org

Salix 
PHARMACEUTICALS

For 30 years, Salix Pharmaceuticals has been committed to the prevention and treatment of gastrointestinal diseases.

Salix licenses, develops and markets innovative products to improve patients' lives and arm healthcare providers with life-changing solutions.

Salix is headquartered in Bridgewater, New Jersey.

© 2020 Salix Pharmaceuticals or its affiliates. SAL.0214.USA.19

Code of Conduct and TLMdX® Event Policies

View the full list of policies and code of conduct [here](#).

Continuing Education Information

The Liver Meeting Digital Experience™ (TLMdX®) will facilitate the exchange of groundbreaking information on clinical, basic and translational research in diseases of the liver and biliary tract and liver transplantation. Through educational and scientific sessions presenting the latest research, hepatology health care professionals worldwide can utilize new medical evidence that enhances their ability to appropriately identify and manage their patients, and ultimately impact the health of their patients.

Needs Statement

Chronic liver disease and cirrhosis are among the 15 leading causes of death in the United States. TLMdX® will facilitate the exchange of scientific knowledge from cutting-edge clinical, basic and translational research in liver transplantation and diseases of the liver and biliary tract. Integrating evidence-based medicine and new quality concepts into practice is essential to ultimately improve health outcomes. Through networking opportunities and a variety of educational and interactive sessions, healthcare professionals worldwide can effectively diagnose and manage liver disorders.

Learning Objectives

Upon completion of this live activity, learners will be able to:

- Evaluate recent advancements in groundbreaking basic, translational, comparative effectiveness, outcomes and clinical research in diseases of the liver and biliary tract that may be readily incorporated into practice.
- Examine short- and long-term patient outcomes following liver transplantation by integrating current evidence-based practice in pre-transplant clinical care, advances in surgical techniques and state-of-the-art postoperative management.
- Formulate partnerships and develop comparative effectiveness projects, design clinical trials and complete ongoing investigative efforts to improve the health outcomes in acute and chronic diseases of the liver and biliary tract.

Target Audience

All healthcare providers with an interest in hepatology will benefit from the information presented at TLMdX® including:

- Hepatologists (Adult and Pediatric)
- Transplant Hepatologists (Adult and Pediatric)
- Gastroenterologists (Adult and Pediatric)
- Nurses
- Nurse Practitioners
- Pharmacists
- Physician Assistants
- Transplant Coordinators
- Surgeons
- Fellows/Trainees
- Internal Medicine Physicians
- Internal Medicine Residents and Medical Students
- Researchers
- Cell Biologists
- Lawyers who specialize in medical practice
- Infectious Disease Specialists
- Public Health Workers
- Research Coordinators
- Nurse Educators
- Pharmaceutical Industry Representatives
- Patient Advocates/ Patient Advocacy Group Representatives

Core Competencies

The Liver Meeting Digital Experience™ was planned in the context of the following ACGME/ IOM/IPEC competencies: Patient Care and Procedural Skills, Medical Knowledge, Practice-based Learning and Improvement, Interpersonal and Communication Skills, Professionalism, Systems-based Practice, Provide Patient-centered Care, Work in Interdisciplinary Teams, Employ Evidence-based Practice, Apply Quality Improvements, Utilize Informatics, Values/Ethics for Interprofessional Practice, Roles/Responsibilities, Interprofessional Communication, Teams and Teamwork.

Continuing Education Statements

The Liver Meeting Digital Experience™ offers a variety of Continuing Education resources designed to engage hepatology professionals in lifelong learning opportunities along with the chance to stay current on the latest trends in clinical management of diseases of the liver and biliary tract and in liver transplantation.

Evaluations and information on claiming continuing education credits will be made available to all registered attendees after the conclusion of meeting. Certificates of Attendance are also available for noncredit seeking attendees.

Continuing Medical Education (CME)

Accreditation Statement

The American Association for the Study of Liver Diseases (AASLD) is accredited by the Accreditation Council for Continuing Medical Education (ACCME) to provide continuing medical education for physicians.



Credit Designation Statements

The American Association for the Study of Liver Diseases (AASLD) designates this other activity (internet live course and internet enduring material) for a maximum of 78.00 AMA PRA Category 1 credit(s)™. Physicians should claim only the credit commensurate with the extent of their participation in the activity.

Please note: Select sessions may not be eligible for CME credit, and will be noted accordingly.

American Board of Internal Medicine (ABIM) Maintenance of Certification (MOC) Statement

Successful completion of this CME activity, which includes participation in the evaluation component, enables the participant to earn up to 78.00 MOC points in the American Board of Internal Medicine's (ABIM) Maintenance of Certification (MOC) program. It is the CME activity provider's responsibility to submit participant completion information to ACCME for the purpose of granting ABIM MOC credit.



Continuing Education (CE) Statement

In support of improving patient care, this activity has been planned and implemented by Amedco LLC and the American Association for the Study of Liver Diseases. Amedco LLC is jointly accredited by the Accreditation Council for Continuing Medical Education (ACCME), the Accreditation Council for Pharmacy Education (ACPE), and the American Nurses Credentialing Center (ANCC), to provide continuing education for the healthcare team.



Credit Designation Statement – Live Content – Amedco LLC designates the live activity portion for a maximum of 5.00 ANCC contact hours for nurses.

Credit Designation Statement – Enduring Content – Amedco LLC designates the enduring material activity portion for a maximum of 12.5 ANCC contact hours for nurses.

Learners should claim only the credit commensurate with the extent of their participation in the activities. The 2.50 live hours that were recorded cannot also be claimed as enduring hours.

Nurse Pharmacology Credits

Please note the agenda for identification of sessions eligible for pharmacotherapeutic hours and self-submit those to your board. Keep the agenda as a reference in case they have questions. Maximum of 7.00 hours.

AASLD POLICIES

AASLD has several policies regarding use The Liver Meeting Digital Experience™ materials and information. Please visit the links below for detailed information regarding each policy:

- [Abstract Embargo Policy](#)
- [Disclosure Policy](#)
- [Limited License](#)
- [Use of AASLD Scientific Program Content](#)

Scientific Program Schedule

Pre-Event Sessions

COVID-19 and Chronic Liver Disease **New!**

Exclusive TLMdX OnDemand Session

Program Chairs: John R. Lake, Karen Hoyt

Connecting Patients and Physicians

Up to 0.75 CME Credits Offered | Up to 0.75 ABIM MOC Points Offered **CME** **MOC**

The COVID-19 patient engagement subcommittee presents patient-centered updates on the current knowledge, practice and recommendations in the care of chronic liver disease in the COVID-19 era at this timely session. Presentations include current data on COVID-19 and the liver, patient-driven case studies, and case discussions of liver disease patients who have recovered from COVID-19.

Learning Objectives:

- Describe recent information regarding COVID-19 and the liver including up to date recommendations for patients with chronic liver disease
- Discuss strategies for patients who have recovered from COVID-19 to raise concerns regarding liver disease with their medical providers
- Discuss existing information resources available from patient-focused liver disease groups related to COVID-19



General Hepatology Update

Exclusive TLMdX OnDemand Session

Program Chairs: Gyorgy Baffy, Mitchell A. Mah'moud

Up to 1.50 CME Credits Offered | Up to 1.50 ABIM MOC Points Offered



What support and knowledge do clinical practitioners caring for liver patients need in the healthcare system of 2020? This overview session provides a general update on hepatology for practitioners in all clinical environments. Speakers will provide updated information on selected liver disorders that are prevalent, complex and have a significant impact on routine medical practice today.

Learning Objectives:

- Utilize effective lifestyle interventions in the management of nonalcoholic fatty liver disease
- Identify indicators of high-quality care for patients with autoimmune hepatitis
- Summarize the pathophysiology and current treatment of liver disease associated with pregnancy

Social Media in Hepatology

Exclusive TLMdX OnDemand Session

Program Chair: Christopher Koh

Up to 1.25 CME Credits Offered | Up to 1.25 ABIM MOC Points Offered



What role does social media, the communications landscape that currently influences everything from politics to pop culture, play in hepatology and healthcare? This program will expose participants to different aspects of social media and encourage discussion ways that social media could advance the science and practice of hepatology.

Learning Objectives:

- Integrate different educational offerings from the AASLD into their practice of science and medicine
- Apply new skills for utilizing social media in the practice of medicine
- Distinguish between different social media platforms and their relative utility in medicine

Value-based Medicine in Hepatology

Exclusive TLMdX OnDemand Session

Program Chairs: Zobair Younossi, Fasiha Kanwal

Up to 1.25 CME Credits Offered | Up to 1.25 ABIM MOC Points Offered



Value-based Arrangements are an increasingly expanding and necessary part of the U.S. healthcare landscape. This program will educate and empower hepatologists to be valuable contributors to the success of these new arrangements and play an active role in developing and implementing beneficial approaches for all patients with liver disease.

Learning Objectives:

- Review fundamental knowledge in alternate payment models and novel approaches to delivering care to cirrhotic patients
- Discuss the importance of specific coding to capture the complexity of patients with chronic liver disease
- Discuss strategies to actively engage with their system leadership as it relates to value-based arrangements



Postgraduate Course

OnDemand with Live Q&A

Paradigm Shifts in Hepatology: Rethinking Conventional Wisdom

Program Chairs: Raymond T. Chung , Kimberly A. Brown , Lawrence S. Friedman

Up to 7.00 CME Credits Offered | Up to 7.00 ABIM MOC Points Offered

Up to 7.00 Contact Hours Offered



The practice of hepatology has undergone profound shifts driven by new pathophysiologic insights which, in many cases, force us to rethink traditional medical dogma. This is also an era of profound progress in diagnostics and therapeutics. This program explores these seismic shifts to allow attendees to re-energize their practices and embrace new goals and objectives for treating many liver diseases.

Learning Objectives:

- Identify important conceptual changes that have altered our management of liver diseases
- Apply insights from pathophysiology to selection of new treatments for patients with liver diseases
- Apply new standards regarding quality of care to their practice of hepatology

Postgraduate Course Live Audience Q&A

Saturday, November 14 | 4:30 PM – 5:30 PM

One week before the meeting, dive into the Postgraduate Course content then join us on Saturday, November 14 to participate in a live interactive Q&A with a core group of organizers/speakers who are experts in their field.

AASLD/ASGE Endoscopy Course

OnDemand with Live Q&A

Endoscopic Management of Hepatobiliary Disease: The Great 2020 Debates

Program Chairs: Michael J. Levy, Jennifer J. Telford

Up to 4.25 CME Credits Offered

Up to 4.25 ABIM MOC Points Offered



The focus of the 2020 AASLD/ASGE Postgraduate Course is the role of endoscopic interventions, and how they may be used to enhance medical and surgical management of patients with hepatobiliary diseases. In an engaging debate format, experts will discuss challenging and sometimes controversial patient cases and topics. Participants are encouraged to interact with faculty during the debates and panel discussions.

Learning Objectives:

- Discuss ways to manage patients with gastrointestinal bleeding secondary to portal hypertension according to accepted standards of care
- Evaluate the appropriate work up of a patient with an indeterminate bile duct stricture
- Interpret novel diagnostic tests in the evaluation of bile duct strictures
- Describe the applications and limitations of ERCP in a patient who has undergone a liver transplant
- Recognize the role of advanced endoscopic techniques in diagnosing and managing hepatobiliary disease
- Evaluate the different endoscopic options for gallbladder and biliary drainage

AASLD/ASGE Endoscopy Course Live Audience Q&A

Monday, November 16 | 2 PM – 3:30 PM

One week before the meeting, dive into the AASLD/ASGE Endoscopy Course content then join us on Monday, November 16 to participate in a live interactive Q&A with a core group of organizers/speakers who are experts in their field.

AASLD/ILTS Transplant Course

OnDemand with Live Q&A

Optimization of Transplant Care

Program Chairs: Kymberly Watt, Deniz Balci, James Findlay

*Up to 5.50 CME Credits Offered | Up to 5.50 ABIM MOC Points Offered
Up to 5.50 Contact Hours Offered*



With a continuing demand for liver transplantation and a limited organ supply, it is necessary to optimize care at all stages of the transplant continuum. At this timely, informative program, faculty will provide participants with updated information on relevant topics across the transplant process to highlight ways to provide optimal care to transplant patients at all points of their experience.

Learning Objectives:

- Understand the utility of living donor liver transplant, organs with chronic viral infection, machine perfusion and social media in enhancing transplant access
- Expand the knowledge about evolving concepts in perioperative risk management such as cirrhotic cardiomyopathy and extracorporeal organ support
- Apply a universal approach to post transplant long term care involving prevention of organ damage and malignancy and infection-related travel risk

AASLD/ILTS Transplant Course Live Audience Q&A

Monday, November 16 | 2 PM – 3:30 PM

One week before the meeting, dive into the AASLD/ILTS Transplant Course content then join us on Monday, November 16 to participate in a live interactive Q&A with a core group of organizers/speakers who are experts in their field.

Friday, November 13

Presidential Welcome

Friday, November 13 | 9:30 AM – 9:40 AM

Presenter: Jorge A. Bezerra

President's Choice Lecture

Friday, November 13 | 9:40 AM – 10:00 AM

Presenter: Griffin Rodgers

Up to 0.25 CME Credits Offered | Up to 0.25 ABIM MOC Points Offered



This lecture will highlight liver disease research advances supported by the National Institute of Diabetes and Digestive and Kidney Diseases, as part of its 70th year shared anniversary with AASLD. Dr. Rodgers will share current research challenges and opportunities, including the COVID-19 pandemic, efforts to address health disparities and include underrepresented populations in the scientific workforce, and the Institute's strategic plan.

Learning Objectives:

- Recognize past liver disease research advances supported by the National Institute of Diabetes and Digestive and Kidney Diseases (NIDDK)
- Identify funding opportunities and other programs related to liver disease research currently being offered by the NIDDK
- Discuss current strategies to address healthcare disparities among patients and underrepresentation of certain populations in the scientific workforce



Hans Popper Basic Science State-of-the-Art Lecture

Friday, November 13 | 10:00 AM – 10:30 AM

Modeling Development and Cancer Using Liver and Biliary Organoids

Presenter: Meritxell Huch

Up to 0.50 CME Credits Offered | Up to 0.50 ABIM MOC Points Offered



The 2020 Hans Popper lecture reviews the cellular and molecular mechanisms of liver regeneration upon toxic injury, and how these mechanisms change in disease, mainly cancer. Learn how one lab combined animal and human organoid models, how to recapitulate key aspects of liver development and regeneration in vitro, and potential applications of these models in personalized medicine.

Learning Objectives:

- Review the literature on liver organoids derived from healthy donors and cancer patients
- Review current knowledge on new cellular models that can be amenable for personalized medicine
- Review their knowledge on liver regeneration, in particular, duct-mediated hepatocyte regeneration



Thomas E. Starzl Transplant Surgery State-of-the-Art Lecture

Friday, November 13 | 10:00 AM – 10:30 AM

Living Donor Transplantation: The Promise and Lessons Learned

Presenter: John P. Roberts

Up to 0.50 CME Credits Offered | Up to 0.50 ABIM MOC Points Offered



At this year's Thomas E. Starzl lecture, an expert in the field will discuss the most recent developments and controversies concerning living donor liver transplantation. The lecture will encompass topics like the current need for living organ donors, and the balance of donor and recipient risks with benefits for both parties in this life-saving procedure.

Learning Objectives:

- Describe why living donor liver transplantation is necessary in the current treatment environment
- Discuss the benefits and risks for liver recipients receiving organs from live donors
- Discuss the risks for potential living liver donors



AASLD/NASPGHAN Pediatric Symposium

Friday, November 13 | 10:30 AM – Noon

Medical and Ethical Dilemmas of Patient and Organ Selection for Liver Transplantation

Program Chairs: Vania Kasper, Jennifer M. Vittorio

Up to 1.50 CME Credits Offered | Up to 1.50 ABIM MOC Points Offered



At this symposium, experts explore current controversies in transplant hepatology. An ethicist sets the stage with a lively discussion of current practices and challenges in patient and organ selection. Questions explored will include strategies to increase the donor pool, including living and altruistic donations, and the role of transplantation in patients with high-risk liver tumors and underlying mitochondrial disease.

Learning Objectives:

- Recognize important challenges in the field of liver transplantation
- Discuss potential strategies to increase the donor pool and organ availability
- Discuss emerging data and acknowledge different approaches to patient selection for liver transplantation

SIG Program

Friday, November 13 | 10:30 AM – Noon

Common Problems in Clinical Hepatology Practice

Clinical Practice SIG

Program Chairs: Kris V. Kowdley, Paul J. Thuluvath

Up to 1.50 CME Credits Offered | Up to 1.50 ABIM MOC Points Offered



What are the latest developments in managing patients with liver disease and cirrhosis? Join this engaging discussion by international experts, who will address management of portal vein thrombosis, interpretation of abnormal iron studies, managing acute kidney injury in hospitalized patients with liver disease, best practices for hepatocellular carcinoma and cholangiocarcinoma screening, and both pharmacologic and non-pharmacologic management of non-alcoholic steatohepatitis.

Learning Objectives:

- Describe when to initiate anticoagulation for the treatment of portal vein thrombosis
- To learn the differential diagnosis of abnormal iron studies and the proper evaluation of abnormal iron levels in the patient with liver disease
- To learn the management of patients with acute kidney injury in the setting of cirrhosis, including data from recent studies regarding the treatment of hepato-renal syndrome
- To understand proper screening for liver cancer and cholangiocarcinoma, in the setting of cirrhosis, non-alcoholic fatty liver disease without cirrhosis, and primary sclerosing cholangitis
- To gain knowledge regarding recent advances in the management of non-alcoholic steatohepatitis, including strategies for weight loss and currently available pharmacologic therapy



SIG Program

Friday, November 13 | 10:30 AM – Noon

HBV: Current Management Controversies and the Road to a Cure

Hepatitis B SIG

Program Chairs: Hannah Lee, Calvin Q. Pan

Up to 1.50 CME Credits Offered | Up to 1.50 ABIM MOC Points Offered



Currently, there is groundbreaking research on HBV cure efforts, therapeutic developments for HDV, virologic biomarkers to help individualize antiviral “stopping” strategies in selected populations, and our understanding of concurrent NAFLD and chronic HBV infection. This two-hour symposium reviews emerging data on a potential HBV cure and HDV treatments, novel virologic biomarkers, and the epidemiology and natural history of concurrent HBV/NAFLD.

Learning Objectives:

- Apply current knowledge in the epidemiology and natural history of concurrent HBV infection and NAFLD in the management of these patients
- Interpret and use novel virologic biomarkers in the management of chronic HBV infection
- Identify potential patients in whom safe stopping of antivirals can be considered and how to monitor these patients afterwards
- Review updates in drug development for HBV cure – virologic, immunologic, and combination approach
- Review updates in drug development for HDV

SIG Program

Friday, November 13 | 10:30 AM – 11:30 AM

*Hot Topics in the Pathogenesis and Treatment of Liver Cancer
(HCC and iCCA) Part 1*

Hepatobiliary Neoplasia SIG & Liver Transplantation and Surgery SIG

Program Chairs: Josep M. Llovet, James F. Trotter, Jessica Zucman-Rossi, Michael L. Schilsky

Up to 1.00 CME Credits Offered | Up to 1.00 ABIM MOC Points Offered



This engaging session will explore hot topics in the management of liver cancer, including talks on hepatobiliary neoplasia and liver transplant. The program's first segment will address advancements in research on the pathogenesis and surgical management of liver cancer, while the second half provides analysis of the newest advances in the systemic management of both iCCA and HCC.

Learning Objectives:

- Review the advancements in the knowledge of the pathogenesis of the liver cancer
- To update the information on management of iCCA and ICC, surgical, loco-regional and systemic treatment
- To understand advancements in trial design for HCC
- To understand the role of immunotherapy in the management of ICC and HCC

SIG Program

Friday, November 13 | 10:30 AM – Noon

The Basic Mechanisms of Hepatotoxicity and Their Clinical Implications

Hepatotoxicity SIG

Program Chairs: Adrian Reuben, Andrew Stolz, Victor J. Navarro

Up to 1.50 CME Credits Offered | Up to 1.50 ABIM MOC Points Offered



Explore critical, clinically relevant topics related to basic mechanisms of hepatotoxicity at this SIG. Each talk begins with a patient case presented by a trainee. Discussion topics include how the hepatocyte responds to stress, including antibiotics and other medications; the genetic and epigenetic basis of drug-induced liver injury; and the interplay of adaptive immunity and liver injury.

Learning Objectives:

- Discuss how the hepatocyte responds to stress; specifically, medications and other xenobiotics
- Discuss the genetic and epigenetic basis of drug induced liver injury
- Explain the interplay of adaptive immunity and liver injury
- Discuss the environmental and occupational triggers for hepatotoxicity to better recognize potential causes of liver injury



SIG Program

Friday, November 13 | 10:30 AM – Noon

Clinical Management of NASH in 2020

Nonalcoholic Fatty Liver Disease SIG

Program Chairs: Stephen A. Harrison, Yaron Rotman

Up to 1.50 CME Credits Offered | Up to 1.50 ABIM MOC Points Offered



This symposium will focus on clinical management of NAFLD/NASH in 2020, at a time when the first NASH therapy is likely to be approved soon. Talks will explore whom to treat, how to identify these patients, current treatment options and the future of NASH diagnostics and therapy. The session includes a debate: Do we target NASH resolution or fibrosis improvement?

Learning Objectives:

- Identify at-risk patients with NASH who would warrant potential therapy, different contexts of use for non-invasive tests and assessment of various therapies
- Evaluate current treatment options for NASH to include non-pharmacologic treatment options
- Assess the potential future therapeutic landscape for NAFLD/NASH



Meet-the-Experts **Live!**

Friday, November 13 | Noon – 1:00 PM

No CME Offered

These highly interactive, small group Zoom sessions are opportunities for attendees to engage with well-known liver disease experts. Both researchers and clinicians can ask questions, explore a wide variety of timely topics and network with both peers and leaders in the field.

Attendance is limited!

- MTE 1: COVID-19 and Cirrhosis and HCC: Information for Patients and Their Families
- MTE 2: COVID-19 and the Liver
- MTE 3: Gut Microbiome and Alcohol-associated Liver Disease
- MTE 4: Hepatotoxicity of Immunotherapy
- MTE 5: Liver Preservation
- MTE 6: New Treatments for NASH



SIG Program

Friday, November 13 | 2:00 PM – 3:30 PM

Clinical Unmet Needs in Alcohol-associated Liver Disease (ALD)

Alcohol-associated Liver Disease SIG

Program Chairs: Ashwani K. Singal, Pranoti Mandrekar

Up to 1.50 CME Credits Offered | Up to 1.50 ABIM MOC Points Offered



Alcohol-associated liver disease (ALD) has emerged as a leading indicator of liver disease and the need for organ transplant. Currently, we lack effective pharmacological therapies to improve long-term outcomes in ALD patients, but new research advances are highly encouraging. Join this ALD SIG program for important research updates and to identify unmet clinical needs in ALD patients.

Learning Objectives:

- Discuss the latest research developments in alcohol-associated liver disease
- Recognize unmet clinical needs in alcohol-associated liver disease
- Compose take-home points for better care of ALD patients and ideas for future research

Career Development Workshop

Friday, November 13 | 2:00 PM – 3:30 PM

Program Chairs: Aparna Goel, Brian Kim

Up to 1.50 CME Credits Offered | Up to 1.50 ABIM MOC Points Offered



Join this year's Career Development Workshop designed for both trainees interested in a hepatology career and early-career hepatologists. Participants will explore hepatology training pathways to different career opportunities, ranging from research to community-based practice. Participants will discuss the rewards and challenges of various careers, and strategies to maximize one's potential, including finding mentors.

Learning Objectives:

- Describe the training pathways and various career opportunities in hepatology, including research and community-based practice
- Identify ways to optimize early career opportunities including securing of funding and identification of mentors

SIG Program

Friday, November 13 | 2:00 PM – 3:30 PM

Paving the Road to Hepatitis C Elimination

Hepatitis C SIG

Program Chairs: Joseph K. Lim, Mark S. Sulkowski

Up to 1.50 CME Credits Offered | Up to 1.50 ABIM MOC Points Offered



This program will summarize key concepts in U.S. and global strategies to achieve hepatitis C elimination. Experts will address topics such as new universal screening recommendations, novel paradigms for care delivery beyond the specialty clinic, global strategies for microelimination, treatment as prevention in persons who inject drugs (PWID), and the latest updates on HCV vaccine development.

Learning Objectives:

- Review emerging strategies for U.S. and global HCV microelimination through adoption of universal screening and novel paradigms for care delivery
- Discuss emerging evidence and approaches to treatment as prevention for HCV in persons who inject drugs (PWID)
- Discuss updates in the development of an effective HCV vaccine

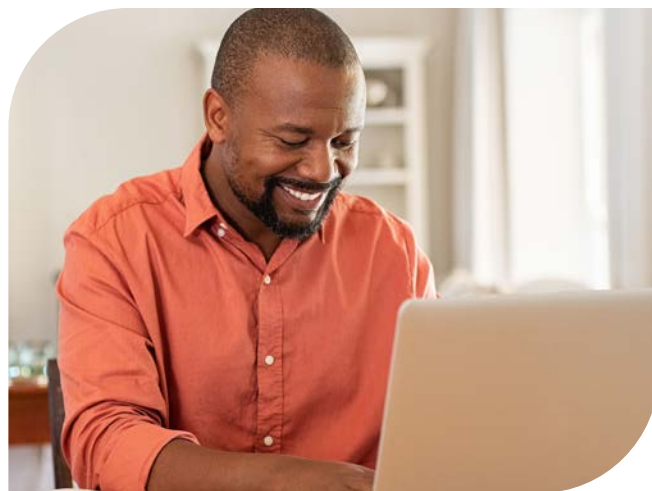
SIG Program

Friday, November 13 | 2:00 PM – 3:30 PM

Hot Topics in the Pathogenesis and Treatment of Liver Cancer (HCC and iCCA) Part 2

Hepatobiliary Neoplasia SIG & Liver Transplantation and Surgery SIG

Program Chairs: Josep M. Llovet, James F. Trotter, Jessica Zucman-Rossi, Michael L. Schilsky



Up to 1.50 CME Credits Offered | Up to 1.50 ABIM MOC Points Offered



This engaging session will explore hot topics in the management of liver cancer, including talks on hepatobiliary neoplasia and liver transplant. The program's first segment will address advancements in research on the pathogenesis and surgical management of liver cancer, while the second half provides analysis of the newest advances in the systemic management of both iCCA and HCC.

Learning Objectives:

- Review the advancements in the knowledge of the pathogenesis of the liver cancer
- To update the information on management of iCCA and ICC, surgical, loco-regional and systemic treatment
- To understand advancements in trial design for HCC
- To understand the role of immunotherapy in the management of ICC and HCC

SIG Program

Friday, November 13 | 2:00 PM – 3:30 PM

NASH Fibrosis: From Matrix to Medicine

Liver Fibrosis SIG

Program Chairs: Yury Popov, Neil C. Henderson

Up to 1.50 CME Credits Offered | Up to 1.50 ABIM MOC Points Offered



This SIG reveals recent progress made in liver fibrosis related to NASH, including new molecular mechanisms and translational aspects of NASH-mediated fibrosis and cirrhosis, and translation of laboratory findings into humans. Speakers will cover significant new information about the potential role of hepatocytes, crosstalk with non-parenchymal cells in NASH-fibrosis, and potential non-invasive biomarkers and treatments of patients with NASH-fibrosis.

Learning Objectives:

- Describe the molecular mechanisms of NASH-fibrosis and the contribution of hepatocytes and their crosstalk with non-parenchymal cells in the development of NASH-fibrosis
- Discuss how basic science discoveries may be translated to new non-invasive biomarkers and therapeutics for NASH-fibrosis
- Explain how basic science discoveries may be translated to new non-invasive biomarkers and therapeutics for NASH-fibrosis



SIG Program

Friday, November 13 | 2:00 PM – 3:30 PM

Controversies in the Diagnosis and Management of Non-cirrhotic Portal Hypertension in Children and Adults Part 1

Pediatric Liver Disorders SIG & Portal Hypertension SIG

Program Chairs: Christine K. Lee, Nanda Kerkar, Elizabeth C. Verna

Up to 1.50 CME Credits Offered | Up to 1.50 ABIM MOC Points Offered



This two-session program explores non-cirrhotic portal hypertension in both children and adults. The first session covers the definition/nomenclature and diagnostic strategies for non-cirrhotic portal hypertension. The second session explores monitoring and management of children and adults with non-cirrhotic portal hypertension, including medical, interventional radiology and surgical challenges. Each session includes case presentations to highlight controversies, expert panel interviews and Q&A.

Learning Objectives:

- Review the definition, nomenclature and diagnostic approach for non-cirrhotic portal hypertension
- Review the similarities and differences in the etiology of non-cirrhotic portal hypertension in pediatric and adult populations
- Discuss the indications for treatment strategies, including medical, radiologic and surgical intervention of non-cirrhotic portal hypertension in children and adults

Meet-the-Experts **Live!**

Friday, November 13 | 3:30 – 4:30 PM

No CME Offered

These highly interactive, small group Zoom sessions are opportunities for attendees to engage with well-known liver disease experts. Both researchers and clinicians can ask questions, explore a wide variety of timely topics and network with both peers and leaders in the field.

Attendance is limited!

- MTE 7: Drug-induced, Herbal and Dietary Supplement-related Liver Injury Including CBD
- MTE 8: Mechanisms Leading from Steatosis to Steatohepatitis
- MTE 9: Novel Therapeutic Targets for PSC
- MTE 10: Organoids to Model Liver Disease
- MTE 11: Pulmonary Complications of Chronic Liver Disease
- MTE 12: Transplantation of HCV Positive Organs: Science, Practice, Policy



Academic Debates - Debate 1

Adult/ General Hepatology Teams

Liver Transplantation in the Times of COVID-19: "To Transplant or Not to Transplant"

Friday, November 13 | 5:30 PM – 6:15 PM

Program Chairs: Christina C. Lindenmeyer, Uchenna Agbim, Oren K. Fix

Up to 0.75 CME Credits Offered | Up to 0.75 ABIM MOC Points Offered



Explore timely topics in liver disease in a lively debate format as pediatric and adult/general hepatology trainees and practicing hepatologists tackle important, often controversial issues. Debaters will gain skills in critical thinking, balanced argumentation and factual examination of each issue's pros and cons. Debaters, judges and audience members will grapple with opposing scientific, societal, individual and financial viewpoints on current clinical concerns.

Learning Objectives:

- Discuss current controversies in hepatology and demonstrate how to critically analyze a topic presenting cogent arguments on different viewpoints
- Summarize decision making on relevant issues related to patient care through critical thinking

Join the fun and ask questions! Don't forget to vote for your favorite team! Winners will be announced Live!



SIG Program

Friday, November 13 | 5:30 PM – 7:00 PM

The Changing Role of Transplant in Acute on Chronic Liver Failure

Acute on Chronic Liver Failure SIG

Program Chairs: Constantine J. Karvellas, Andres Cardenas

Up to 1.50 CME Credits Offered | Up to 1.50 ABIM MOC Points Offered



What is the role of organ transplantation in the care of acute on chronic liver failure (ACLF)? This program was designed to thoroughly review the management of the ACLF patient awaiting liver transplantation (LT), and to examine recently published data on patient outcomes. Post-LT complications and the evolving role of palliative care in patients listed for LT will be explored.

Learning Objectives:

- Review the management of the ACLF patient awaiting liver transplantation and articulate appropriate treatment goals
- Describe the implications of ACLF and multi-organ dysfunction on post-liver transplantation outcomes
- Understand the evolving role of palliative care in the patient ACLF patient listed for liver transplantation



SIG Program

Friday, November 13 | 5:30 PM – 7:00 PM

New Frontiers in PSC

Cholestatic and Autoimmune Liver Diseases SIG

Program Chairs: Uzma Shah, Tamir A. Miloh

Up to 1.50 CME Credits Offered | Up to 1.50 ABIM MOC Points Offered



In this program, experts in the field will address important, yet often controversial, topics in the management of patients with cholangiopathies. The session will focus in particular on primary sclerosing cholangitis (PSC). Clinicians will learn about emerging developments in potential medical therapies, as well as improved monitoring techniques and surveillance strategies for the ongoing care of their patients.

Learning Objectives:

- Review the impact of gut microbiome in PSC and future interventions designed to manipulate the microbiome in this disease
- Describe differences in clinical presentation and management between pediatric and adult patients with PSC
- Appraise a differential diagnosis and management plan for patients with cholangiopathies
- Interpret and apply novel imaging methods in patients with PSC
- Design an appropriate surveillance strategy for cholangiocarcinoma in patients with PSC

SIG Program

Friday, November 13 | 5:30 PM – 6:30 PM

Cellular Senescence in Liver Disease and Aging

Liver Cell Biology in Hepatic Diseases SIG

Program Chairs: Yasuko Iwakiri, Jordi Gracia-Sancho

Up to 1.00 CME Credits Offered | Up to 1.00 ABIM MOC Points Offered



Cellular senescence is a cell cycle arrest program often accompanied by secretion of proinflammatory cytokines and mitochondrial dysfunction. Senescent cells contribute to age-related tissue degradation and may be involved in the pathogenesis of HCC, fibrosis and cholangiopathies. This symposium will explore how experts are working to translate basic science discoveries into emerging therapeutic strategies for several liver diseases.

Learning Objectives:

- Describe the impact of cellular senescence on tumor microenvironment and age-related progression of liver diseases
- Identify senescence-based therapeutic strategies for liver diseases
- Discuss the basic concepts of cellular senescence
- Recognize the role of cellular senescence in the regulation of liver cell function in health and diseases



SIG Program

Friday, November 13 | 5:30 PM – 7:00 PM

Controversies in the Diagnosis and Management of Non-cirrhotic Portal Hypertension in Children and Adults Part 2

Pediatric Liver Disorders SIG & Portal Hypertension SIG

Program Chairs: Christine K. Lee, Nanda Kerkar, Elizabeth C. Verna

Up to 1.50 CME Credits Offered | Up to 1.50 ABIM MOC Points Offered



This two-session program explores non-cirrhotic portal hypertension in both children and adults. The first session covers the definition/nomenclature and diagnostic strategies for non-cirrhotic portal hypertension. The second session explores monitoring and management of children and adults with non-cirrhotic portal hypertension, including medical, interventional radiology and surgical challenges. Each session includes case presentations to highlight controversies, expert panel interviews and Q&A.

Learning Objectives:

- Review the definition, nomenclature and diagnostic approach for non-cirrhotic portal hypertension
- Review the similarities and differences in the etiology of non-cirrhotic portal hypertension in pediatric and adult populations
- Discuss the indications for treatment strategies, including medical, radiologic and surgical intervention of non-cirrhotic portal hypertension in children and adults

SIG Program

Friday, November 13 | 5:30 PM – 7:00 PM

Patient-centered Care: An Evolving Paradigm for Chronic Liver Diseases

Public Health / Health Care Delivery SIG

Program Chairs: Manisha Verma, Brett E. Fortune

Up to 1.50 CME Credits Offered | Up to 1.50 ABIM MOC Points Offered



This program closely examines key components of patient-centered care, including integration of patient-reported outcomes within routine care, care coordination and palliative care integration, telehealth, and emerging models for screening and linkage to care. Speakers will discuss how these care models inform providers in hepatology and how value-based approaches can further consolidate recent arguments to improve chronic liver disease care.

Learning Objectives:

- Review the key components of patient-centered care for the chronic liver disease population and strategies to bring these components to routine hepatology practice
- Discuss necessary changes to enhance patient-centeredness within routine practice
- Describe ways that the emerging domains of patient-centered care can bring out positive changes not only in clinical services but also patient outcomes



Saturday, November 15

Meet-the-Experts **Live!**

Saturday, November 14 | 8:00 AM – 9:00 AM

No CME Offered

These highly interactive, small group Zoom sessions are opportunities for attendees to engage with well-known liver disease experts. Both researchers and clinicians can ask questions, explore a wide variety of timely topics and network with both peers and leaders in the field.

Attendance is limited!

- MTE 13: Renal Complications of Liver Disease
- MTE 14: Bile Acid Signaling
- MTE 15: Cholangiocarcinoma: Two Distinct Diseases (IH vs EH CCC)
- MTE 16: HBV Immunology
- MTE 17: Rational Approaches to HBV Cure
- MTE 18: Hepatocyte-stellate Cell Communication in NASH



Postgraduate Course – Part 1

Saturday, November 14 | 8:30 AM – Noon

Paradigm Shifts in Hepatology: Rethinking Conventional Wisdom

Program Chairs: Raymond T. Chung, Kimberly A. Brown, Lawrence S. Friedman

Up to 3.25 CME Credits Offered | Up to 3.25 ABIM MOC Points Offered

Up to 3.25 Contact Hours Offered



The practice of hepatology has undergone profound shifts driven by new pathophysiologic insights which, in many cases, force us to rethink traditional medical dogma. This is also an era of profound progress in diagnostics and therapeutics. This program explores these seismic shifts to allow attendees to re-energize their practices, and embrace new goals and objectives for treating many liver diseases.

Learning Objectives:

- Identify important conceptual changes that have altered our management of liver diseases
- Apply insights from pathophysiology to selection of new treatments for patients with liver diseases
- Apply new standards regarding quality of care to their practice of hepatology



AASLD/Japan Society of Hepatology Joint Symposium

New!

Saturday, November 14 | 9:00 AM – 10:30 AM

Lean NAFLD

Program Chairs: Zobair M. Younossi, Tetsuo Takehara

Up to 1.50 CME Credits Offered | Up to 1.50 ABIM MOC Points Offered



Non-alcoholic fatty liver disease (NAFLD) is not rare among lean individuals. But in the absence of traditional risk factors, it remains under-recognized. At this JSH-AASLD session, experts unravel the latest data on lean-NASH prevalence in the general population. Speakers will also explore the influence of genetics and environment, and the impact of metabolic abnormalities in fibrosis development in lean-NASH.

Learning Objectives:

- Discuss the prevalence of lean-NASH in general population
- Review the impact of metabolic abnormalities for hepatic fibrosis in lean-NASH patients
- Describe the association of genetic background and the liver fibrosis development in lean-NASH



Emerging Trends Symposium

Saturday, November 14 | 9:00 AM – 10:30 AM

Artificial Intelligence (AI) in Hepatology

Program Chairs: Meena B. Bansal, Grace L. Su

Up to 1.50 CME Credits Offered | Up to 1.50 ABIM MOC Points Offered



Artificial intelligence (AI) has become increasingly pervasive in our daily lives, including healthcare settings. AI is only beginning to affect how we care for our patients with chronic liver disease, and there are multiple ways to apply the technology that remain unexplored. This symposium focuses on the methodology and application of AI in the clinical practice of hepatology.

Learning Objectives:

- Review the basic concepts of artificial intelligence
- Discuss potential applications of AI in clinical practice and population health for patients with liver disease
- Describe the role of AI as it applies to liver imaging and pathology

Parallel Session **Live!**

Hepatitis B: Therapeutics (Established)

Saturday, November 14 | 9:00 AM – 10:30 AM

No CME Offered

Plenary Session **Live!**

Liver Transplantation

Moderators: Kymberly Watt, Bijan Egtesad

Saturday, November 14 | 9:00 AM – 10:30 AM

No CME Offered

Basic Science Symposium – Part 1 **Live!**

Saturday, November 14 | 9:00 AM – 11:30 AM

Mechanisms of Alcohol-associated Liver Disease: Molecular, Cellular and Systemic Crosstalk

Program Chairs: Laura E. Nagy, Wen-Xing Ding, Vijay Shah

Up to 2.50 CME Credits Offered | Up to 2.50 ABIM MOC Points Offered



At the Basic Science Symposium, basic and clinical investigators will summarize the newest research in the molecular and cellular mechanisms of alcohol-induced liver disease (ALD). Topics include hot discoveries in organelle and protein damage, cross-talk of multiple organs and tissues, microbiota, cell-to-cell communication, and immune response in ALD pathogenesis. Junior investigators and pre- and post-doctoral trainees are encouraged to attend.

Learning Objectives:

- Review cutting-edge approaches to assess cell death in vivo and in vitro
- Discuss the emerging role of non-apoptotic cell death in liver physiology and pathology
- Review molecular mechanisms regulating cell death in the liver
- Explain the generation of interest by junior investigators in studies of cell death in the liver

Clinical Research Workshop

Saturday, November 14 | 10:30 AM – Noon

Research Methodologies Using Alcohol-associated Liver Disease as a Model

Program Chairs: Paul Y. Kwo, Jennifer C. Lai

Up to 1.50 CME Credits Offered | Up to 1.50 ABIM MOC Points Offered



This workshop explores laboratory-based and clinical research methodologies using alcohol-associated liver disease as a model. Experts will share strategies to identify mechanisms of hepatocyte injury and fibrosis and biomarkers for alcohol-associated injury, and discuss viable techniques for developing prediction models, qualitative research methodologies and how to design clinical trials and endpoints using large demonstrated databases.

Learning Objectives:

- Discuss the role of qualitative research methods to identify sobriety barriers
- Describe how databases can be used to create cohorts for analysis with development of prediction models for endpoints in those with alcohol-associated liver disease
- Review techniques to identify potential biomarkers and mechanisms of hepatocyte injury in alcohol-associated liver disease



Global Symposium

Saturday, November 14 | 10:30 AM – 11:30 AM

Global Elimination of Hepatitis C: From Ideas to Action

Program Chairs: Michael W. Fried, Stacey Trooskin

Up to 1.00 CME Credits Offered | Up to 1.00 ABIM MOC Points Offered



The Global Symposium on Hepatitis C Elimination sprang from AASLD's collaboration with fellow global liver associations and the Clinton Health Access Initiative. Explore worldwide progress in the goal to simplify diagnostic and treatment algorithms to achieve a "test and cure" protocol for HCV. Global experts will share landmark achievements and remaining challenges for HCV's elimination and brainstorm potential solutions.

Learning Objectives:

- Review unmet needs in HCV diagnosis and treatment approaches specific to various world regions
- Discuss new advances in HCV testing and treatment from Africa, Europe, North and South America and Asia-Pacific regions, and how to apply successful approaches in other regions
- Discuss existing challenges and barriers to achieving a realistic test-and-cure approach to eliminate HCV worldwide

Global Symposium: Breakout Session **Live!**

Keep the conversation going! Join us in a small breakout Zoom session following the Global Symposium session.

No CME Offered

Attendance is limited.

Saturday, November 14 | Noon – 1:00 PM

- **Breakout Session:** Global Symposium Panel Discussion

SIG Program

Saturday, November 14 | 10:30 AM – Noon

Interdisciplinary Approach to Managing Metabolic Syndrome in NAFLD/NASH Patients

Hepatology Associates SIG

Program Chairs: Vicki Shah, Tiffany E. Kaiser

Up to 1.50 CME Credits Offered | Up to 1.50 ABIM MOC Points Offered



This comprehensive program will offer hepatology providers the latest information on diagnosing and managing NAFLD/NASH patients with new therapeutic options. During the second half of the program, expert faculty will review the assessment and treatment of metabolic syndrome, including approaches to assess cardiovascular risk, treatment guidelines for hypertension and hyperlipidemia, and a primer for type-2 diabetes management.

Learning Objectives:

- Interpret diagnostics information for NAFLD/NASH patients
- Review the new therapeutic options approved and in clinical trials for treatment of NASH
- Review the cardiovascular risk of NAFLD/NASH to be able to treat hypertension and hyperlipidemia per current guidelines
- Review the basic pathophysiology, diagnostics, treatment with oral and insulin for type 2 diabetes



Transplant Surgery Workshop

Saturday, November 14 | 10:30 AM – 11:30 AM

Program Chairs: Bijan Eghtesad, Simon P. Horslen, Kymberly Watt

Up to 1.00 CME Credits Offered | Up to 1.00 ABIM MOC Points Offered



The COVID-19 pandemic has affected everyone, including patients with liver disease, and the pre- and post-transplant population. At this program, experts discuss the effect of the virus on the liver and treatment options, as well as COVID-19's impact on organ donation and pre-, and post-liver transplant patients in highly affected areas in the United States and Europe.

Learning Objectives:

- Assess risks of using livers from potentially infected donors and procedures to minimize that risk
- Discuss treatment options for infected patients with or without liver transplantation and future therapeutic options on the horizon, including vaccines
- Describe experiences with management of infection in liver transplant and immunosuppressed patients and their outcomes around the world

Transplant Surgery Workshop: Breakout Sessions **Live!**

Keep the conversation going! Join us in these small Zoom breakout sessions following the Transplant Surgery Workshop session.

No CME Offered

Attendance is limited!

Saturday, November 14 | Noon – 1:00 PM

- **Breakout Session:** COVID-19 in Transplant Patients: What is the U.S. Experience?
- **Breakout Session:** COVID-19 in Pediatric Age Group: Risks and Outcomes
- **Breakout Session:** COVID-19 and Liver: What Have We Learned?

Postgraduate Course – Part 2

Saturday, November 14 | 1:30 PM – 4:30 PM

Paradigm Shifts in Hepatology: Rethinking Conventional Wisdom

Program Chairs: Raymond T. Chung,
Kimberly A. Brown, Lawrence S. Friedman

Up to 2.75 CME Credits Offered

Up to 2.75 ABIM MOC Points Offered

Up to 2.75 Contact Hours Offered

CME

CE

MOC



The practice of hepatology has undergone profound shifts driven by new pathophysiologic insights which, in many cases, force us to rethink traditional medical dogma. This is also an era of profound progress in diagnostics and therapeutics. This program explores these seismic shifts to allow attendees to re-energize their practices, and embrace new goals and objectives for treating many liver diseases.

Learning Objectives:

- Identify important conceptual changes that have altered our management of liver diseases
- Apply insights from pathophysiology to selection of new treatments for patients with liver diseases
- Apply new standards regarding quality of care to their practice of hepatology

Postgraduate Course Live Audience Q&A **Live!**

Saturday, November 14 | 4:30 PM – 5:30 PM

Up to 1.00 CME Credits Offered | Up to 1.00 ABIM MOC Points Offered

Up to 1.00 Contact Hours Offered

CME

MOC

CE

Participate in a live interactive Q&A with a core group of organizers/speakers who are experts in their field!

Diversity Workshop

Saturday, November 14 | 2:00 PM – 3:30 PM

Methodologies in Liver Health Disparities Research

Program Chairs: Nikroo Hashemi, Julio A. Gutierrez

Up to 1.50 CME Credits Offered | Up to 1.50 ABIM MOC Points Offered



Previous diversity workshops have identified disparities in liver disease and liver transplantation, providing insights on solutions to these disparities. This year's workshop will serve as a bridge between past discussions to approach solutions. Speakers will delve deeply into ways we can identify and apply appropriate research methods to gather the data necessary to address and improve ongoing health disparities.

Learning Objectives:

- Describe appropriate methods for evaluating the role of social determinants in health outcomes
- Identify associations and interactions between biological, behavioral and cultural aspects of health
- Discuss how to implement appropriate research methods for investigating health disparities in liver disease and liver transplantation

Parallel Session **Live!**

Liver Transplantation: Immunosuppression/Outcomes/Complications

Saturday, November 14 | 2:00 PM – 3:30 PM

No CME Offered

Parallel Session **Live!**

Metabolic and Genetic Diseases

Saturday, November 14 | 2:00 PM – 3:30 PM

No CME Offered

Basic Science Symposium – Part 2 **Live!**

Saturday, November 14 | 2:00 PM – 3:30 PM

*Mechanisms of Alcohol-associated Liver Disease:
Molecular, Cellular & Systemic Cross-Talk*

Program Chairs: Laura E. Nagy, Wen-Xing Ding, Vijay Shah

Up to 2.25 CME Credits Offered | Up to 2.25 ABIM MOC Points Offered



At the Basic Science Symposium, basic and clinical investigators will summarize the newest research in the molecular and cellular mechanisms of alcohol-induced liver disease (ALD). Topics include hot discoveries in organelle and protein damage, cross-talk of multiple organs and tissues, microbiota, cell-to-cell communication, and immune response in ALD pathogenesis. Junior investigators and pre- and post-doctoral trainees are encouraged to attend.

Learning Objectives:

- Review cutting-edge approaches to assess cell death in vivo and in vitro
- Discuss the emerging role of non-apoptotic cell death in liver physiology and pathology
- Review molecular mechanisms regulating cell death in the liver
- Explain the generation of interest by junior investigators in studies of cell death in the liver

Basic Science Symposium Live Audience Q&A **Live!**

Saturday, November 14 | 4:30 PM – 5:30 PM

Up to 1.00 CME Credits Offered | Up to 1.00 ABIM MOC Points Offered



Participate in a live interactive Q&A with a core group of organizers/speakers who are experts in their field!

Meet-the-Experts **Live!**

Saturday, November 14 | 3:30 PM – 4:30 PM

No CME Offered

These highly interactive, small group Zoom sessions are opportunities for attendees to engage with well-known liver disease experts. Both researchers and clinicians can ask questions, explore a wide variety of timely topics and network with both peers and leaders in the field.

Attendance is limited!

- MTE 19: Emerging Therapies for Hepatic Encephalopathy
- MTE 20: Growing My Practice: The Case for Integrating an APP
- MTE 21: Liver Transplantation in Alcohol-associated Liver Disease and ACLF
- MTE 22: New Management Concepts in Alcohol-associated Hepatitis
- MTE 23: Therapeutic FXR Agonism in Liver Disease
- MTE 24: COVID-19 and Liver Transplant: Information for Patients and Their Families



Distinguished Award Presentations

Saturday, November 14 | 5:30 PM – 6:15 PM

Distinguished Achievement Award

The distinguished achievement award is given to an individual in honor of his or her sustained scientific contributions to the field of liver disease and the scientific foundations of hepatology. The award honors a sustained contribution rather than a single discovery or major achievement.

Presenter: John R. Lake | **Recipient:** Russell H. Wiesner

Distinguished Clinician Educator/Mentor Award

The Distinguished Clinician Educator/Mentor Award is given in honor of the sustained service of clinician educators to AASLD or the liver community in general. The award recognizes the skills of outstanding clinicians and educators who have made momentous contributions to hepatology over an extended period.

Presenter: John P. Rice | **Recipient:** Michael R. Lucey

Distinguished Service Award

The Distinguished Service Award is given to an individual in honor of his or her sustained service to AASLD or the liver disease community in general. The award recognizes service provided to the community of hepatology researchers and clinicians over an extended period; service that is well above and beyond that provided by many members who serve on the Governing Board and Committees of AASLD.

Presenter: Nancy Reau | **Recipient:** Donald M. Jensen

Distinguished Advocacy Service Award

The distinguished advocacy service award is given to an advocacy organization or individual in honor of sustained service to the liver disease community in general. The award recognizes service provided to the hepatology community over an extended period that raises awareness or garners public and federal legislative support and promotes liver health and quality patient care.

Presenter: Jake T. Liang | **Recipient:** Timothy M. Block and Joan Block

Parallel Session **Live!**

Advances in Alcohol-associated Liver Disease

Saturday, November 14 | 5:30 PM – 7:00 PM

No CME Offered

Parallel Session **Live!**

Hepatitis C: Epidemiology

Saturday, November 14 | 5:30 PM – 7:00 PM

No CME Offered

Parallel Session **Live!**

*Liver Transplantation–Surgical/Donor/
Basic*

Saturday, November 14 | 5:30 PM – 7:00 PM

No CME Offered

Parallel Session **Live!**

NAFLD and NASH: Prognostic and Diagnostic Methods

Saturday, November 14 | 5:30 PM – 7:00 PM

No CME Offered



Women's Health Program

Saturday, November 14 | 5:30 PM – 7:00 PM

Evolving Management of Liver Disease in Pregnancy

Program Chairs: Maria D. Hernandez, Erica Villa

Up to 1.50 CME Credits Offered | Up to 1.50 ABIM MOC Points Offered



New advances in management of liver disease during pregnancy present exciting opportunities and challenges for hepatologists co-managing this patient population. This session will provide key management updates on pertinent topics in pregnancy and liver disease, including a panel discussion of challenging cases in pregnancy, and highlight relevant recommendations from the upcoming AASLD Reproductive Health Guidance document.

Learning Objectives:

- Discuss the impact of liver disease on course of pregnancy
- Review the burden of pregnancy on liver disease
- Outline the specific problems determined by liver transplantation in pregnancy



Academic Debates - Debate 2

Pediatric Hepatology Teams

Live Vaccines in Pediatric Liver Transplant Recipients: “To Give or Not to Give”

Saturday, November 14 | 6:15 PM – 7:00 PM

Program Chairs: Christina C. Lindenmeyer, Uchenna Agbim, Oren K. Fix

Up to 0.75 CME Credits Offered | Up to 0.75 ABIM MOC Points Offered



Explore timely topics in liver disease in a lively debate format as pediatric and adult/general hepatology trainees and practicing hepatologists tackle important, often controversial issues. Debaters will gain skills in critical thinking, balanced argumentation and factual examination of each issue’s pros and cons. Debaters, judges and audience members will grapple with opposing scientific, societal, individual and financial viewpoints on current clinical concerns.

Learning Objectives:

- Discuss current controversies in hepatology and demonstrate how to critically analyze a topic presenting cogent arguments on different viewpoints
- Summarize decision making on relevant issues related to patient care through critical thinking

Join the fun and ask questions! Don’t forget to vote for your favorite team! Winners will be announced Live!



Sunday, November 15

Meet-the-Experts **Live!**

Sunday, November 15 | 8:00 AM – 9:00 AM

No CME Offered

These highly interactive, small group Zoom sessions are opportunities for attendees to engage with well-known liver disease experts. Both researchers and clinicians can ask questions, explore a wide variety of timely topics and network with both peers and leaders in the field.

Attendance is limited!

- MTE 25: Antifibrotic Agents: Current Status
- MTE 26: COVID-19 and NAFLD and Alcohol-associated Liver Disease: Information for Patients and Their Families
- MTE 27: Genotype-phenotype Correlations in Fatty Liver Disease
- MTE 28: HCV Microelimination: Local and Regional Advocacy
- MTE 29: Risk Stratification and Management of NAFLD
- MTE 30: Update on UNOS National Review Board and Liver Allocation



Hepatology Associates Course - Part 1

Sunday, November 15 | 9:00 AM – 10:30 AM

Bridging the Gap: All Hands-on Deck

Program Chairs: Janet Gripshover, Lisa K. Hardee

*Up to 1.25 CME Credits Offered | Up to 1.25 ABIM MOC Points Offered
Up to 1.25 Contact Hours Offered*



As clinicians, how can we improve patient assessment and decision making as we provide individualized care for hepatology patients? Experienced providers will explore persistent issues and potential solutions at this program, with insights ranging from therapeutic adherence to patients' nutritional needs. Ultimately, this engaging session's goal is to provide new information, provoke thoughtful discussion and promote innovation.

Learning Objectives:

- Evaluate effectiveness of treatment and care plan, and gain the knowledge necessary to implement changes where needed
- Appraise ways to implement resources to improve the patient's and family's awareness of disease process, causes, corrective actions and importance of adherence to care plan
- Discuss how to improve clinical management of frailty and nutritional needs of the hepatology patient

Plenary Session **Live!**

Clinical and Outcomes Discoveries

Sunday, November 15 | 9:00 AM – 10:30 AM

Moderators: Raymond T. Chung, Meena B. Bansal

No CME Offered

Basic Research Workshop **Live!**

Sunday, November 15 | 9:00 AM – Noon

The Gut Microbiota: From Descriptive Studies to Targets of Therapy

Program Chairs: Jasmohan S. Bajaj, Bernd Schnabl

Up to 3.00 CME Credits Offered | Up to 3.00 ABIM MOC Points Offered



The gut microbiota plays an important role in human health. As the gut and liver communicate, microbial changes are associated with various liver diseases. This workshop explores the gut microbiota's functions and structure and its relationship to the liver, with a focus on translating microbiota research into clinical practice through fecal microbiota transplantation or more sophisticated techniques of microbiota editing.

Learning Objectives:

- Explain the intimate relationship and bidirectional communication between the gut microbiota and liver
- Review current knowledge of microbiome structure and function, and its effect on human health
- Discuss the role of diet on gut microbiota composition
- Identify the gut microbiota as target for therapy of liver diseases

Participate in a live interactive Q&A toward the end of the session with a core group of organizers/speakers who are experts in their field!

Hepatology Associates Course - Part 2

Sunday, November 15 | 10:30 AM – Noon

Bridging the Gap: All Hands-on Deck

Program Chairs: Janet Gripshover, Lisa K. Hardee

Up to 1.25 CME Credits Offered | Up to 1.25 ABIM MOC Points Offered

Up to 1.25 Contact Hours Offered



As clinicians, how can we improve patient assessment and decision making as we provide individualized care for hepatology patients? Experienced providers will explore persistent issues and potential solutions at this program, with insights ranging from therapeutic adherence to patients' nutritional needs. Ultimately, this engaging session's goal is to provide new information, provoke thoughtful discussion and promote innovation.

Learning Objectives:

- Appraise ways to implement resources to improve the patient's and family's awareness of disease process, causes, corrective actions and importance of adherence to care plan
- Evaluate effectiveness of treatment and care plan, and gain the knowledge necessary to implement changes where needed
- Discuss how to improve clinical management of frailty and nutritional needs of the hepatology patient



Parallel Session **Live!**

Pediatric Hepatology: Clinical and Translational Advances

Sunday, November 15 | 10:30 AM – Noon

No CME Offered

Parallel Session **Live!**

NAFLD and NASH: Therapeutics

Sunday, November 15 | 10:30 AM – Noon

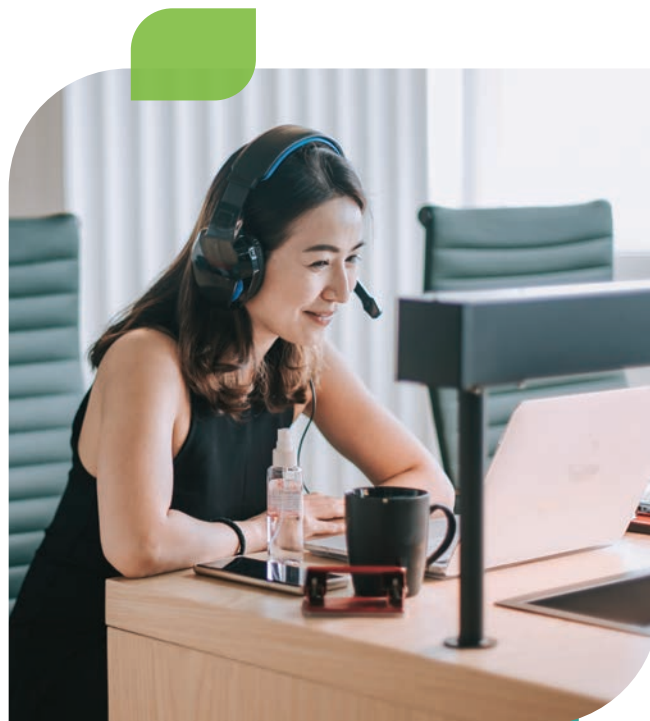
No CME Offered

Parallel Session **Live!**

Portal Hypertension and Complications of Cirrhosis: Clinical (HRS, Ascites and Encephalopathy)

Sunday, November 15 | 10:30 AM – Noon

No CME Offered



Practice Guidelines Workshop

Sunday, November 15 | 10:30 AM – Noon

New AASLD Guidelines: A Summary of New Recommendations for Autoimmune Hepatitis, Women's Reproductive Health, Ascites and KIC and Vascular Disorders of the Liver

Program Chairs: George Ioannou, Elizabeth C. Verna

Up to 1.50 CME Credits Offered | Up to 1.50 ABIM MOC Points Offered



Join this Practice Guidelines Session to hear experts highlight new recommendations and controversial issues in four new AASLD Guidelines and Guidances developed in 2019-2020. Presenters will be the lead authors of the Guidelines on Autoimmune Hepatitis; Women's Reproductive Health; Ascites and Kidney Injury in Cirrhosis; and Vascular Liver Disorders, Portal Vein Thrombosis and Procedural Bleeding in Patients with Liver Disease.

Learning Objectives:

- Recognize the difference between AASLD practice guidelines and practice guidances and differentiate between their recommendations and guidance statements
- Recognize new recommendations or changes in the diagnosis and management of conditions addressed in the four new AASLD Guidelines/Guidances
- Identify issues that remain controversial in the diagnosis and management of conditions addressed in the four new AASLD Guidelines/Guidances

Meet-the-Experts **Live!**

Sunday, November 15 | Noon – 1:00 PM

No CME Offered

These highly interactive, small group Zoom sessions are opportunities for attendees to engage with well-known liver disease experts. Both researchers and clinicians can ask questions, explore a wide variety of timely topics and network with both peers and leaders in the field.

Attendance is limited!

- MTE 31: Cardiovascular Risk in NAFLD/NASH
- MTE 32: Conducting Hepatology Clinical Research in the COVID-19 Era: How to Keep Things Going
- MTE 33: Early Detection of HCC
- MTE 34: Hepatitis B: The Treatment Pipeline
- MTE 35: Management of Substance Use Disorders for the Hepatologist
- MTE 36: Reproductive Health in Liver Disease: Distilling the Recent AASLD Guidance Document

Parallel Session **Live!**

Pediatric Hepatology and Cholestasis: Forecasting Outcomes and Disease Models

Sunday, November 15 | Noon – 1:00 PM

No CME Offered

AASLD/EASL Joint Symposium

Sunday, November 15 | 2:00 PM – 3:30 PM

Steatohepatitis in Fatty Liver Disease: In Europe and U.S.

Program Chairs: Anna Mae Diehl, Luca Valenti

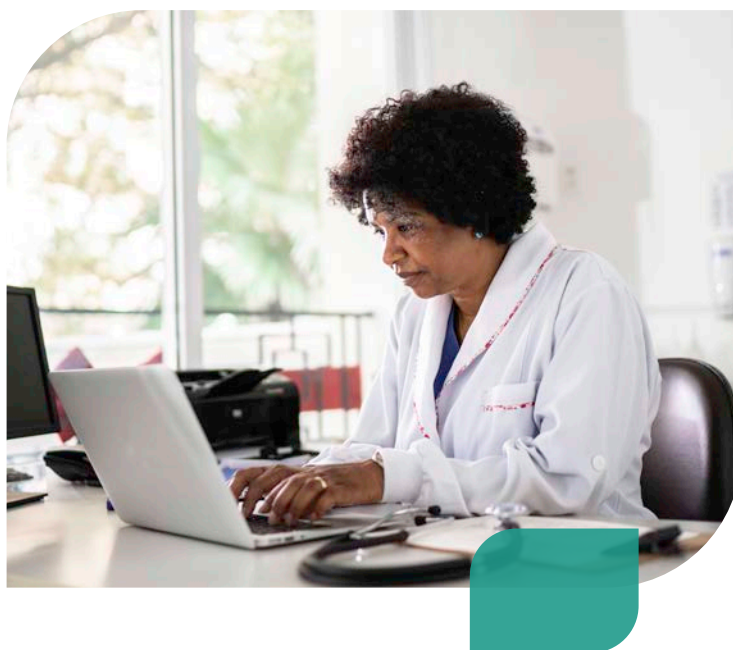
Up to 1.50 CME Credits Offered | Up to 1.50 ABIM MOC Points Offered



What are the public health implications of NAFLD in the U.S. and Europe? This session explores this timely question and more. Faculty will lead an in-depth discussion about societal behaviors that could be targeted to stem the NAFLD epidemic, including improving the obesogenic environment, limiting exposure to disease accelerating factors, and optimizing child health.

Learning Objectives:

- Describe the prevalence of NAFLD and expense attributable to this disease in the U.S. and Europe
- Identify societal behaviors that might be targeted to reduce exposures that promote NAFLD in adults
- Discuss the importance of limiting negative environmental exposures early in life to prevent NAFLD in adulthood



COVID-19 and the Liver Clinical Symposium **New!**

Sunday, November 15 | 2:00 PM – 3:30 PM

Program Chairs: Robert J. Fontana, David L. Thomas

Up to 1.50 CME Credits Offered | Up to 1.50 ABIM MOC Points Offered



The global pandemic has affected patients with liver disease in unexpected ways. At this symposium, faculty review the effects of COVID-19 on the liver and how people with liver disease differ in their responses to COVID-19. They will review the latest data on COVID-19 treatments, COVID-19 prevention strategies including vaccines, and racial disparities revealed by this unprecedented epidemic.

Learning Objectives:

- Identify ways in which COVID-19 clinically manifests in patients with liver disease and cirrhosis
- Compare the treatments for COVID-19
- List available vaccine strategies to prevent COVID-19



COVID-19 and the Liver Clinical Symposium: Breakout Sessions

Live!

Keep the conversation going! Join us in these small breakout Zoom sessions following the COVID-19 and the Liver Clinical Symposium session.

No CME Offered

Attendance is limited.

Sunday, November 15 | 3:30 - 4:30 PM

- **Breakout Session:** COVID-19 and the Liver: Panel Discussion
- **Breakout Session:** COVID-19 and the Liver: Europe
- **Breakout Session:** COVID-19 and the Liver: South and Central America

NIH Corner

Sunday, November 15 | 2:00 PM - 3:30 PM

Hepatology and Addiction Integrated Care Models for Alcohol-associated Liver Disease: Call for Action

Program Chairs: Kathy Jung, Ashwani K. Singal, Carlos Blanco

Up to 1.50 CME Credits Offered | Up to 1.50 ABIM MOC Points Offered



Worldwide, alcohol abuse contributes to 50% of cirrhosis cases and 27% of liver-related mortality. Abuse of alcohol and other substances compromises all liver disease outcomes. Can better screening and treatment of substance abuse disorders in patients with liver disease improve clinical outcomes? Find out why multidisciplinary approaches between hepatologists and addiction teams is essential to achieve this goal.

Learning Objectives:

- Recognize the rationale and need for an integrated care model to manage patients with alcohol-associated liver disease
- Review screening of and interventions for the management of alcohol and other substance use disorders in patients with alcohol-associated liver disease and to incorporate referral to relevant medical professionals for continuing treatment
- Identify research and funding opportunities on alcohol-associated liver disease and/or alcohol or other substance use disorders

Parallel Session **Live!**

Hepatitis B: Therapeutics (New)

Sunday, November 15 | 2:00 PM – 3:30 PM

No CME Offered

Parallel Session **Live!**

NAFLD and NASH: Epidemiology and Outcomes

Sunday, November 15 | 2:00 PM – 3:30 PM

No CME Offered

Parallel Session **Live!**

Portal Hypertension and Complications of Cirrhosis (Infections and Bleeding)

Sunday, November 15 | 2:00 PM – 3:30 PM

No CME Offered



Meet-the-Experts **Live!**

Sunday, November 15 | 3:30 PM – 4:30 PM

No CME Offered

These highly interactive, small group Zoom sessions are opportunities for attendees to engage with well-known liver disease experts. Both researchers and clinicians can ask questions, explore a wide variety of timely topics and network with both peers and leaders in the field.

Attendance is limited!

- MTE 37: Microbiome and Metabolomic Studies in NASH Progression
- MTE 38: Single Cell Approach to Liver Fibrosis

Parallel Session **Live!**

Clinical Cholestatic (PBC/PSC) and Autoimmune Liver Diseases

Sunday, November 15 | 5:30 PM – 7:00 PM

No CME Offered

Parallel Session **Live!**

COVID-19 and the Liver

Sunday, November 15 | 5:30 PM – 7:00 PM

No CME Offered

Parallel Session **Live!**

Hepatobiliary Neoplasia: Experimental and Novel Diagnostic/Imaging

Sunday, November 15 | 5:30 PM – 7:00 PM

No CME Offered

Parallel Session **Live!**

Hepatotoxicity

Sunday, November 15 | 5:30 PM – 7:00 PM

No CME Offered

Parallel Session **Live!**

*Portal Hypertension and
Complications of Cirrhosis:
Translational/Basic*

Sunday, November 15 | 5:30 PM – 7:00 PM

No CME Offered



Monday, November 16

A Conversation with the Newest Nobel Laureates with the 2020 recipients of the Nobel Prize in Physiology or Medicine, Drs. Harvey J. Alter, Michael Houghton, and Charles M. Rice

Monday, November 16 | 12:00 PM – 1:00 PM

This highly anticipated panel discussion provides attendees an exclusive opportunity to hear firsthand from three outstanding leaders in the field. Drs. Harvey J. Alter, Michael Houghton, and Charles M. Rice, the 2020 recipients of the Nobel Prize in Physiology or Medicine, will join TLMdX LIVE for a question and answer session. Their groundbreaking research identified the Hepatitis C virus (HCV) – a bloodborne pathogen that causes acute and chronic hepatitis, cirrhosis, and liver cancer – and laid the foundation for the future development of a cure. This session will be moderated by Dr. Jorge Bezerra (AASLD President), Dr. Raymond Chung (AASLD President-Elect), and Dr. Anna Lok (AASLD Past President)."

Meet-the-Experts **Live!**

Monday, November 16 | 8:00 AM – 9:00 AM

No CME Offered

These highly interactive, small group Zoom sessions are opportunities for attendees to engage with well-known liver disease experts. Both researchers and clinicians can ask questions, explore a wide variety of timely topics and network with both peers and leaders in the field.

Attendance is limited!

- MTE 39: Highlights on Cirrhosis and Portal Hypertension
- MTE 40: Non-invasive Assessment of Clinically Significant Portal Hypertension
- MTE 41: Pediatric NASH: Therapeutic Approaches
- MTE 42: Clinical Challenges in Treating ALD
- MTE 43: COVID-19 in the Healthcare Worker & Clinical Trials in Healthcare Workers
- MTE 44: Hot Topics in Public Health Research in Hepatology

Parallel Session **Live!**

Acute/Acute on Chronic Liver Failure

Monday, November 16 | 9:00 AM – 10:30 AM

No CME Offered

Parallel Session **Live!**

Hepatobiliary Neoplasia: Clinical

Monday, November 16 | 9:00 AM – 10:30 AM

No CME Offered

Parallel Session **Live!**

NAFLD and Non-Alcoholic Steatohepatitis: Clinical

Monday, November 16 | 9:00 AM – 10:30 AM

No CME Offered

Plenary Session **Live!**

Basic and Translational Discoveries

Monday, November 16 | 9:00 AM – 10:30 AM

Moderators: Laurie D. DeLeve, Harmeet Malhi

No CME Offered



AASLD/ASGE Endoscopy Course

Monday, November 16 | 9:00 AM – Noon

Endoscopic Management of Hepatobiliary Disease: The Great 2020 Debates

Program Chairs: Michael J. Levy, Jennifer J. Telford

Up to 2.75 CME Credits Offered | Up to 2.75 ABIM MOC Points Offered



The focus of the 2020 AASLD/ASGE Postgraduate Course is the role of endoscopic interventions, and how they may be used to enhance medical and surgical management of patients with hepatobiliary diseases. In an engaging debate format, experts will discuss challenging and sometimes controversial patient cases and topics. Participants are encouraged to interact with faculty during the debates and panel discussions.

Learning Objectives:

- Discuss ways to manage patients with gastrointestinal bleeding secondary to portal hypertension according to accepted standards of care
- Evaluate the appropriate work up of a patient with an indeterminate bile duct stricture
- Interpret novel diagnostic tests in the evaluation of bile duct strictures
- Describe the applications and limitations of ERCP in a patient who has undergone a liver transplant
- Recognize the role of advanced endoscopic techniques in diagnosing and managing hepatobiliary disease. Evaluate the different endoscopic options for gallbladder and biliary drainage. Evaluate the different endoscopic options for gallbladder and biliary drainage

AASLD/ASGE Endoscopy Course Live Audience Q&A **Live!**

Monday, November 16 | 2:00 PM – 3:30 PM

Up to 1.50 CME Credits Offered | Up to 1.50 ABIM MOC Points Offered



Participate in a live interactive Q&A with a core group of organizers/speakers who are experts in their field!

AASLD/ILTS Transplant Course

Monday, November 16 | 9:00 AM – 1:00 PM

Optimization of Transplant Care

Program Chairs: Kymberly Watt, Deniz Balci, James Findlay

*Up to 4.00 CME Credits Offered | Up to 4.00 ABIM MOC Points Offered
Up to 4.00 Contact Hours Offered*



With a continuing demand for liver transplantation and a limited organ supply, it is necessary to optimize care at all stages of the transplant continuum. At this timely, informative program, faculty will provide participants with updated information on relevant topics across the transplant process to highlight ways to provide optimal care to transplant patients at all points of their experience.

Learning Objectives:

- Understand the utility of living donor liver transplant, organs with chronic viral infection, machine perfusion and social media in enhancing transplant access
- Expand the knowledge about evolving concepts in perioperative risk management such as cirrhotic cardiomyopathy and extracorporeal organ support
- Apply a universal approach to post transplant long term care involving prevention of organ damage and malignancy and infection-related travel risk



AASLD/ILTS Transplant Course Live Audience Q&A **Live!**

Monday, November 16 | 2:00 PM – 3:30 PM

*Up to 1.50 CME Credits Offered | Up to 1.50 ABIM MOC Points Offered
Up to 1.50 Contact Hours Offered*



Participate in a live interactive Q&A with a core group of organizers/speakers who are experts in their field!

Hyman J. Zimmerman Hepatotoxicity State-of-the-Art Lecture

Monday, November 16 | 10:30 AM – 11:00 AM

Hepatotoxicity from Checkpoint Inhibitors, Biologicals, Small Molecules

Presenter: Einar Bjornsson

Up to 0.50 CME Credits Offered | Up to 0.50 ABIM MOC Points Offered



Biologic drugs are commonly prescribed for autoimmune conditions and malignancies. How do we manage biologics' effect on the liver? Acute liver failure has been reported in some patients on TNF-alpha inhibitors. Checkpoint inhibitors that modulate T-cell immune reactivity in cancer are frequently associated with liver injury. This session explores monitoring of liver tests, therapy cessation, corticosteroids and other hot topics.

Learning Objectives:

- Discuss the pathophysiology of hepatotoxicity associated with biologics
- Review the frequency of hepatotoxicities associated with biologics and numbers needed to harm
- Summarize current approaches to the management of liver injury in patients on biologics

Parallel Session **Live!**

Experimental Advances in NAFLD

Monday, November 16 | 10:30 AM – Noon

No CME Offered

Parallel Session **Live!**

Health Services Research and Public Health

Monday, November 16 | 10:30 AM – Noon

No CME Offered

Parallel Session **Live!**

Hepatitis B: Non-Therapy

Monday, November 16 | 10:30 AM – Noon

No CME Offered



Leon Schiff State-of-the-Art Lecture

Monday, November 16 | 11:30 AM – Noon

Using Innovation to Personalize the Care of Patients with PSC

Presenter: Konstantinos N. Lazaridis

Up to 0.50 CME Credits Offered | Up to 0.50 ABIM MOC Points Offered



How can we take steps toward more personalized care of patients living with primary sclerosing cholangitis (PSC)? This intriguing lecture will provide an overview of the latest knowledge on the PSC pathogenesis. Faculty will then expand the discussion to cover potential applications of these advances in the clinic to improve and individualize care of patients with PSC.

Learning Objectives:

- Outline recent research findings to improve clinical knowledge of the pathogenesis of HCC
- Describe approaches to evaluate the progress of PSC
- Discuss innovative methods to individualize the care of patients with PSC

Meet-the-Experts **Live!**

Monday, November 16 | Noon – 1:00 PM

No CME Offered

These highly interactive, small group Zoom sessions are opportunities for attendees to engage with well-known liver disease experts. Both researchers and clinicians can ask questions, explore a wide variety of timely topics and network with both peers and leaders in the field.

Attendance is limited!

- MTE 45: COVID-19 in Children with Liver Disease/Transplant: Information for Patients and Their Families
- MTE 46: Application of Artificial Intelligence to Liver Cancer
- MTE 47: Biomarker Development for NAFLD/NASH
- MTE 48: Hepatic Lesions in Pregnancy
- MTE 49: Innate Immunity and ALD
- MTE 50: Noncoding RNAs in Liver Disease

Parallel Session **Live!**

Cellular and Molecular Biology

Monday, November 16 | 2:00 PM – 3:30 PM

No CME Offered

Parallel Session **Live!**

Pediatric Diseases and Cholestasis: Mechanisms of Disease

Monday, November 16 | 2:00 PM – 3:30 PM

Moderators: Benjamin L. Shneider, Heather L. Francis

No CME Offered

Parallel Session **Live!**

Gut Liver Axis and Microbiome

Monday, November 16 | 2:00 PM – 3:30 PM

No CME Offered



Post-Event Sessions

Basic Science Debrief

Exclusive TLMdX OnDemand Sessions

Presenter: Harmeet Malhi

No CME Offered

Don't overlook any of the groundbreaking basic science research presented at TLMdX. In this debrief, an expert will briefly review of all the basic science abstracts presented at the meeting in one condensed session.

Clinical Hepatology Debrief

Exclusive TLMdX OnDemand Sessions

Presenter: TBD

No CME Offered

Review a condensed summary of the clinical research highlights from TLMdX in 2020. This popular debriefing session summarizes all the important findings in clinical hepatology that were presented this year.

Hepatitis Debrief

Exclusive TLMdX OnDemand Sessions

Presenter: Nancy Reau

No CME Offered

Digest a debrief of the newest data on the treatment of viral hepatitis presented at TLMdX in 2020. This unique session synthesizes the results from this year's abstracts, condensed and discussed by an expert in the field.



NAFLD Debrief

Exclusive TLMdX OnDemand Sessions

Presenter: Naga Chalasani

No CME Offered

Review key highlights from all the exciting clinical research presented at TLMdX this year at this condensed round-up session, which is designed to complement the highly regarded Basic, Hepatitis and Clinical Hepatology Debriefts.

Patient Debrief

Exclusive TLMdX OnDemand Sessions

Topline Clinical Research – What this Means for Patients

Presenter: Su Wang

No CME Offered

Don't miss any of the research presented at TLMdX that directly impacts patients. New this year, a patient advocate will review the abstracts presented that significantly impact the role of the patient.



Exhibitor List



Gold

AbbVie
Albireo Pharmaceuticals
Eisai
Gilead - HCV
GlaxoSmithKline
Salix Pharmaceuticals



Silver

AbbVie Medical
Dova
Eurofins - Transplant Genomics
Exelixis
Gastroenterology Advisor
Madrigal Pharmaceuticals
Merck
Novartis
Pfizer



Bronze

Akero Therapeutics, Inc.
ALEH
APASL
Baxter
Bayer
Boehringer-Ingelheim
Covance
CymaBay
EASL
ENDRA Life Sciences
Exelixis
Gastroenterology & Endoscopy News
Gastroenterology & Hepatology
Genentech
Gilead - HBV
Labcorp
Mallinckrodt
Novo Nordisk A/S
Salix Medical Affairs
Sonic Incytes Medical Corp



Basic

AcariaHealth
Accredo
Alexion
Alpha-1 Foundation
Autoimmune Hepatitis Association
Digestive Disease Week
DiaPharma
Dynavax
Echosens
emocha Mobile Health Inc.
FUJIFILM Medical Systems U.S.A. Inc.
Gilead - Medical Information
Gilead Sciences, Inc.
HealthWell Foundation
Hepatiq
National Institute on Alcohol Abuse and Alcoholism (NIAAA)
PhoenixBio
PSC Partners Seeking a Cure
Research Diets
SonoVol, Inc
Taconic Biosciences
Wiley
Yecuris

Poster Information

Visit our vast poster gallery for the latest information in hepatology research from clinical trials to basic science research. Posters cover a wide variety of topics and is a pillar of the educational content included as part of The Liver Meeting Digital Experience™. Posters are available for viewing the entire duration of the meeting.

Poster Sessions by Topic

1. Acute Liver Failure and Artificial Liver Support
2. Advanced Practice Providers (NP, PA, RN, Pharmacists, etc.)
3. Alcohol-associated Liver Diseases: Clinical and Experimental
4. Biliary Physiology, Transport, Cholangiocyte Biology, and Experimental Cholestasis
5. Cell and Molecular Biology
6. COVID-19 and the Liver
7. Genomics and Precision Medicine
8. Gut Liver Axis and Microbiome
9. Health Services and Public Health Research
10. Hepatitis B
11. Hepatitis C
12. Hepatitis: Other Infections
13. Hepatobiliary Neoplasia
14. Hepatotoxicity
15. Human Cholestatic and Autoimmune Liver Diseases
16. Inflammation and Immunobiology
17. Late-breaking Science
18. Liver Fibrogenesis and Non-Parenchymal Cell Biology
19. Liver Transplantation and Liver Surgery
20. Metabolic and Genetic Disease
21. NAFLD and NASH
22. Pediatric Hepatology
23. Portal Hypertension and Other Complications of Cirrhosis
24. Training and Education (Career Development)

Full regular submission abstract text and late-breaking abstract full texts are currently available as Open Access on the [HEPATOLOGY Journal site](#).

Satellite Symposium

These programs are not affiliated with AASLD.

AASLD provides an opportunity for registrants of The Liver Meeting Digital Experience™ to attend independent symposia financially supported by the pharmaceutical industry. These symposia will take place following TLMdX scheduled educational events on Friday, November 13 – Sunday, November 15 from 7:00 – 9:00 PM ET.

Each of the symposia organizers has made a financial contribution in support of the educational mission of AASLD.

This support allows symposia organizers access to TLMdX attendees before the meeting by way of mail promotions and on specific evenings after scheduled educational events. They also make many features of TLMdX possible and help maintain reasonable registration fees. This support is gratefully acknowledged. This acknowledgment, however, does not constitute an endorsement of any product, nor AASLD oversight or endorsement of the content of the program.

Friday, November 13

Unraveling the Intricacies of HCC Management With Your Multidisciplinary Team: A Closer Look at Effective Selection and Sequencing Strategies in an Expanding Treatment Landscape

Supported by: AstraZeneca, Bristol Myers Squibb, Exelixis, Inc., Merck & Co., and Novocure

Organized by: PVI, PeerView Institute for Medical Education

CME provided by: Medical Learning Institute, Inc.

On completion of this activity, participants should be able to:

- Review the key clinical evidence on available systemic treatments, including multikinase, immune checkpoint, and anti-angiogenic inhibitors, for advanced HCC
- Assess available and emerging combination strategies, such as targeted therapies with immunotherapy, dual checkpoint inhibition, and systemic agents with locoregional modalities, across the disease spectrum of HCC
- Develop personalized therapeutic plans in the first and subsequent lines of treatment for patients with advanced HCC

- Incorporate multidisciplinary care approaches for the optimal management of patients with HCC, including those along the intermediate-to-advanced stage disease continuum

For more information, contact the PeerView Live team at 1-877-833-6141, email live@PeerView.com, or visit PeerView.com/HCC20-Live.

Saturday, November 14

Applying Advances in HRS Management

Supported by: Mallinckrodt

Organized by: Medscape Education

CME provided by: Medscape, LLC

On completion of this activity, participants should be able to:

- Increased knowledge regarding:
 - New/emerging treatment approaches for HRS
 - Safety and efficacy data for new/emerging treatment options for HRS
 - Updates to guideline recommendations for diagnosis and treatment of HRS
- Greater competence related to:
 - Early recognition and diagnosis of patients with HRS
 - Modern, evidence-based treatment strategies for patients with HRS

For more information, contact Olalla Barcelo at obarcelo@medscapelive.com or www.medscape.org/symposium/advances-hrs-management.

Stronger Together: An Emerging Era of Combination Regimens for Unresectable HCC

Supported by: Eisai Inc., Exelixis, Inc., Genentech, a member of the Roche Group, and Merck Sharp & Dohme Corp.

Organized by: RMEI Medical Education, LLC

CME provided by: Advancing Knowledge in Healthcare (AKH)

On completion of this activity, participants should be able to:

- Develop treatment plans for patients with advanced hepatocellular carcinoma (HCC) that integrate checkpoint inhibitors and targeted synthetic agents based on their efficacy and safety data
- Develop individualized treatment plans for patients with advanced HCC across multiple lines of therapy
- Analyze the safety and efficacy of new and emerging combination regimens for HCC

Register online at www.RMEI.com/HCC2020.



Sunday, November 15

Potential therapeutic roles for IBAT Inhibitors in Cholestatic and Metabolic Liver Diseases

Supported by: Albireo Pharmaceuticals

Organized by: Liberum IME

CME provided by: ACHL

On completion of this activity, participants should be able to:

- Describe the pathophysiological features of cholestatic and metabolic liver diseases, as well as clinical outcomes associated with these conditions
- Discuss the mechanism of action of ileal bile acid transporter (IBAT) inhibitors and their proposed effects on cholestatic liver disease and metabolic disease
- Recall clinical trial data regarding the efficacy and safety of IBAT inhibitors in the treatment of cholestatic liver disease, including biliary atresia and progressive familial intrahepatic cholestasis (PFIC)
- Identify potential future clinical applications for the IBAT inhibitor class in hepatic and metabolic diseases

For more information please contact Mia Neve at mia.neve@liberumime.com or visit <http://bit.ly/symposium-IBAT-register>.



Product Theaters

Management of Overt Hepatic Encephalopathy in an Expanding Population of Patients with Cirrhosis; Considerations for a COVID-19 Environment

Friday, November 13 | 1:00 PM - 1:30 PM

No CME Offered

Supported by: Salix Pharmaceuticals | **Presented by:** Arun Jesudian, MD

Salix Pharmaceuticals invites you to explore Management of Overt Hepatic Encephalopathy in an Expanding Population of Patients with Cirrhosis; Considerations for a COVID-19 Environment, a non-CME virtual product theater presented by Dr. Arun Jesudian.

Resmetirom for the Treatment of NASH: Early Data from the Phase 3 MAESTRO Clinical Trials

Friday, November 13 | 4:30 PM - 5:00 PM

No CME Offered

Supported by: Madrigal Pharmaceuticals | **Presented by:** Stephen A. Harrison, MD

Resmetirom is an investigational drug currently being evaluated for the treatment of NASH with fibrosis in two Phase 3 studies: MAESTRO-NASH (NCT03900429) and MAESTRO-NAFLD-1 (NCT04197479). Stephen Harrison, MD will discuss data from the open label arm of MAESTRO-NAFLD-1 and a screening algorithm for predicting NASH with fibrosis on liver biopsy in MAESTRONASH.

LENVIMA® Monotherapy as First-Line Treatment Option for Patients with Unresectable Hepatocellular Carcinoma

Saturday, November 14 | 1:00 PM - 1:30 PM

No CME Offered

Supported by: Eisai Inc. | **Presented by:** Catherine Frenette, MD

Objectives:

- Evaluate the efficacy and safety from the REFLECT trial that supports the use of LENVIMA as a first-line treatment option in patients with unresectable HCC (uHCC)
- Review patient case with uHCC to highlight potential treatment outcomes and adverse event management strategies associated with LENVIMA

Clinical Management of HCC With CABOMETYX®

Saturday, November 14 | 1:30 PM - 2:00 PM

No CME Offered

Supported by: Exelixis Inc. | **Presented by:** Catherine Frenette, MD

Exelixis Access Services® (EASE) provides a variety of support to help your patients get started on treatment as soon as possible. EASE can help meet the unique needs of your patients and practice at each step along the access journey.

Biomarkers in Liver Transplantation: The Next Frontier

Sunday, November 15 | 1:00 PM - 1:30 PM

No CME Offered

Supported by: Eurofins - Transplant Genomics | **Presented by:** Josh Levitsky, MD

Dr. Levitsky will share how a blood-based biomarker can be used for detecting rejection in liver transplant recipients.

Session 1: Seeking a Cure for Chronic Hepatitis B: The Need, The Mechanisms and The Treatment Goals

Sunday, November 15 | 4:30 PM - 5:00 PM

No CME Offered

Supported by: GlaxoSmithKline | **Presented by:** Nezam Afdhal, Chari Cohen, Harry Janssen

Chronic Hepatitis B is the most common chronic viral infection worldwide, and is a leading cause of liver- related morbidity and mortality, alongside reduced quality of life and social stigma. In this webinar, we will discuss current treatment approaches and the potential for functional cure with new therapies under investigation.

Session 2: Seeking a Cure for Chronic Hepatitis B: The Need, The Mechanisms and The Treatment Goals – Audience Q&A

Sunday, November 15 | 5:00 PM - 5:30 PM

No CME Offered

Supported by: GlaxoSmithKline | **Presented by:** Nezam Afdhal, Chari Cohen, Harry Janssen

Chronic Hepatitis B is the most common chronic viral infection worldwide, and is a leading cause of liver- related morbidity and mortality, alongside reduced quality of life and social stigma. In this webinar, we will discuss current treatment approaches and the potential for functional cure with new therapies under investigation.



Advancement in the 1L Treatment of Unresectable and Metastatic HCC A Review of the IMbrave150 Trial

Sunday, November 15 | 5:00 PM - 5:30 PM

No CME Offered

Supported by: Genentech | **Presented by:** Catherine Frenette, MD

Objectives:

- Hepatocellular carcinoma disease and staging
- The IMbrave150 clinical trial design, patient characteristics, efficacy and safety data
- Genentech patient support information



Awards

Congratulations to the 2020 AASLD Foundation Award Recipients

AASLD Foundation leads the way by investing more in innovative hepatology research and in the people who study and treat liver disease than any other society.

We have invested **over \$2.2 million** this year in Research and Career Development Awards, Abstract Awards, and our Emerging Liver Scholars (ELS) Program. Our 2020 class of Foundation awardees —selected from a highly competitive applicant pool — demonstrate both exceptional aptitude and deep interest in liver disease research and treatment.

These awards:

- Provide critical funding for new and innovative liver research
- Increase access to trained hepatology providers for patients with liver disease
- Encourage young investigators new to the field
- Recognize scientific excellence in hepatology research

Learn more about this year's outstanding class of awardees:



Research & Career
Development Awardees



Abstract Awardees

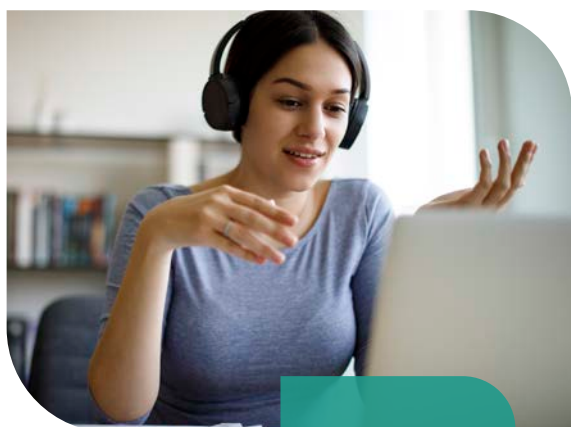


Emerging Liver Scholars

Applications are now being accepted for our 2021 awards cycle.

Visit aasldfoundation.org/awards to learn more about available funding opportunities.

Thank you to our [generous donors](#) for making this year's awards possible.



Emerging Liver Scholars

Now in its ninth year, AASLD Foundation's Emerging Liver Scholars program will host 20 young physicians at The Liver Meeting Digital Experience® 2020.

Chosen from a highly qualified applicant pool of individuals, these trainees have received grants covering travel, housing, and meeting expenses. In addition to attending the meeting with an AASLD member/mentor from their institution, the ELS attendees will have the opportunity to attend special events specifically suited to their current and future academic needs.

Gabriella Aitcheson, MD

University of Miami

Rabab Ali, MBBS

Duke University

Joseph Asemota, MD

Howard University

Hanna Blaney, MD

Texas A&M Health Science Center College of Medicine - Scott & White Internal Medicine Residency

Hillary Braun, MD

University of California, San Francisco

Michelle Corrado, MD, MBA

Children's Hospital Colorado

Lisa Deng, MD

University of California, San Francisco

Nolan Faust, MD

The University of Chicago

Courtney Hanlon, MD

University of Southern California

Alan Hutchison, MD, PhD

The University of Chicago

Ravi Jariwala, MD

University of Alabama at Birmingham

Camille Kezer, MD

Mayo Clinic Rochester

Abraham Matar, MD

Emory University

Lindsay Matthews, MD

University of Wisconsin

Zoe Memel, MD

Massachusetts General Hospital

Jiyeon Park, MD

Stanford University Medical Center

Frederick Peng, MD

Baylor College of Medicine

Abigail Russi, MD, PhD

Cincinnati Children's Hospital Medical Center

Mariya Samoylova, MD

Duke University

Cynthia Tsay, MD

Yale School of Medicine

Making the Impossible Possible: A World Without Liver Disease

To achieve this goal, we need a consistent, stable source of funding. As the largest private supporter of liver disease research and training in the United States, AASLD Foundation will continue to be that stable source of funding with your help.



Your Support is Critical

We have a significant gap every year between what can be funded and the resources available to sustain and grow awards and initiatives. With your generosity, we will be able to continue:

- Building stable funding resources
- Raising more unrestricted funds to address new research needs
- Enhancing training and education
- Increasing public awareness of liver disease

The Liver Meeting Digital Experience™ is the perfect time to make a donation to AASLD Foundation and learn more about our impact.

- **Make a gift as you register for the meeting.**
- **During the meeting, visit the Foundation Booth** to make your gift and learn more about our impact, programs and a wellness session we've planned for meeting attendees. We will be there to answer any questions you may have about AASLD Foundation.
- In addition to loved ones, friends and colleagues, you can **honor the nurses and nurse practitioners in your life**, along with other frontline health care professionals who make this world a better place every day, by making a gift to AASLD Foundation in their names as we celebrate Year of the Nurse.
- **Federal employee?** You can pledge a gift to CFC #75219

A gift of any amount will help accomplish so much for liver disease research and training. Thank you for your support.

aasldfoundation.org/donate

The AASLD Foundation is tax-exempt under §501(c)(3) of the Internal Revenue Code. Contributions made to the AASLD Foundation are deductible charitable contributions to the extent permitted by §170 of the Internal Revenue Code. We recommend you consult your tax advisor for details.

YOUR GIFTS HAVE FUNDED:

**Over
\$50 million**

**in Research and Career
Development Awards***

**5
free online
modules**

**as part of our Fundamentals
of Liver Diseases program.**

**New NAFLD/NASH module with
CE/CME/MOC credits now available.**

* AASLD and AASLD Foundation
funding since 2000.



**AASLD
FOUNDATION**

KNOWLEDGE
PRACTICE
CURE®

AASLD November 13-16, 2020

The Liver Meeting[®]

Digital Experience

**Thank you for
joining TLMdX[®].**