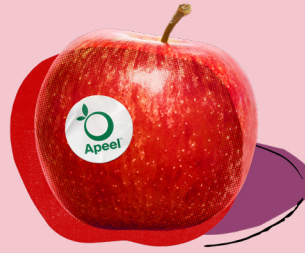


Apeel Apples

Sustainability Scorecard



By reducing waste, Apeel greatly increases sustainability in the apple supply chain.

Apeel's plant-derived solution slows water loss and oxidation, which extends the shelf life of apples. As a result, fewer go to waste through the supply chain. Apeel Apples reduce food waste from farm to table, ensuring that more of the apples grown are consumed.

Less food is wasted, so more resources are saved:

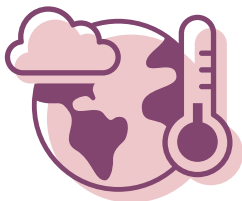
- » Farm inputs
- » Water
- » Energy
- » Land use
- » Transportation
- » Refrigeration
- » Packaging

We conducted a Life Cycle Assessment (LCA) study to understand Apeel's environmental benefits from reducing food waste at grocery stores in the US.

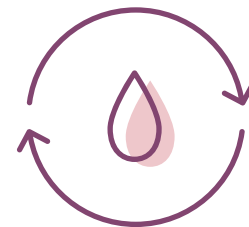


The LCA results indicate that Apeel Apples require up to:

20 grams less GHG emissions



3 liters less water



These savings account for the impacts from manufacturing, distributing and applying the Apeel coating: **0.04 liters** of water and **3.5g CO₂eq** emissions per apple.

To learn more about how Apeel measures the environmental impacts of Apeel Apples and the Apeel product itself, check out our third-party verified LCA study [here](#).