

O R O G E N

Raven Project

Classical Carlin Target on Rabbit Trend

TECHNICAL PRESENTATION
OCTOBER 2020

WWW.OROGENROYALTIES.COM

TSX.V:OGN

Forward Looking Information

This presentation includes certain statements that may be deemed "forward looking statements". All statements in this presentation, other than statements of historical facts, that address events or developments that Evrim Resources Corp. (the "Company") expects to occur, are forward looking statements. Forward looking statements are statements that are not historical facts and are generally, but not always, identified by the words "expects", "plans", "anticipates", "believes", "intends", "estimates", "projects", "potential" and similar expressions, or that events or conditions "will", "would", "may", "could" or "should" occur.

Although the Company believes the expectations expressed in such forward looking statements are based on reasonable assumptions, such statements are not guarantees of future performance and actual results may differ materially from those in the forward looking statements. Factors that could cause the actual results to differ materially from those in forward looking statements include market prices, exploitation and exploration successes, and continued availability of capital and financing, and general economic, market or business conditions. Investors are cautioned that any such statements are not guarantees of future performance and actual results or developments may differ materially from those projected in the forward looking statements. Forward looking statements are based on the beliefs, estimates and opinions of the Company's management on the date the statements are made. Except as required by securities laws, the Company undertakes no obligation to update these forward looking statements in the event that management's beliefs, estimates or opinions, or other factors, should change.

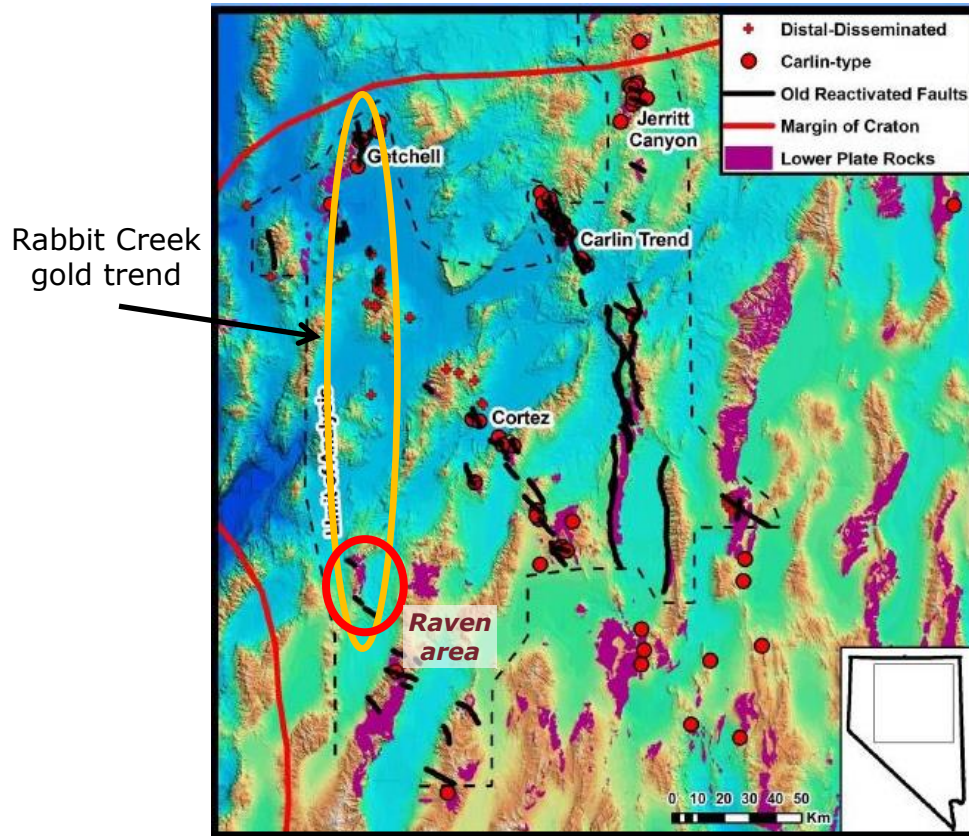
Introduction

A classical Carlin target with the characteristics necessary to host a multi-million ounce gold deposit

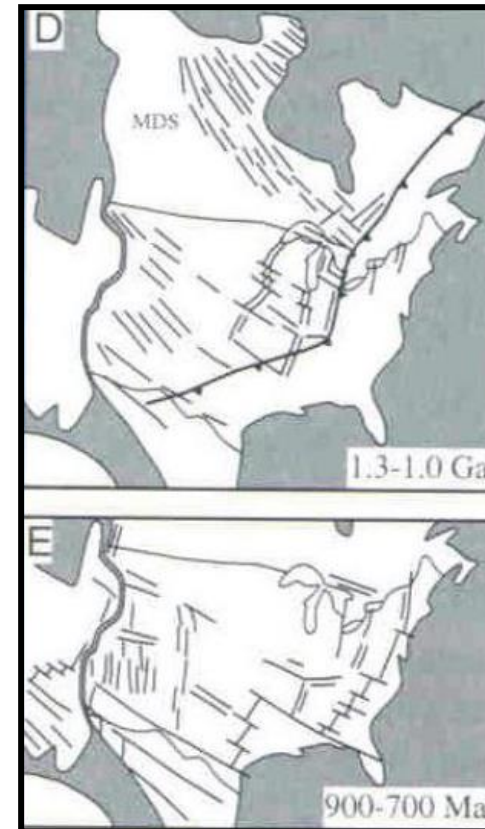
- Presence of a Carlin-type gold system on southern Rabbit Creek Gold Trend
- Altered lower plate carbonate host rock Roberts Mountains. Formation exposed in window through Roberts Mountains Thrust
- Large regional As anomaly, similar to main trends
- Skarn, hornfels, altered dikes near center of district
- Potential feeder structures - old reactivated high angle faults consistent with Proterozoic rift structures
- Widespread Au anomalies in upper plate rocks overlying concealed Roberts Mountains Formation: incompletely drilled
- Has never had a comprehensive district-scale exploration approach

Deep-Seated Proterozoic Rift-Related Structures

NNW and WNW Old Reactivated High-Angle Faults:
Consistent with orientation of Proterozoic Rift Faults throughout the United States



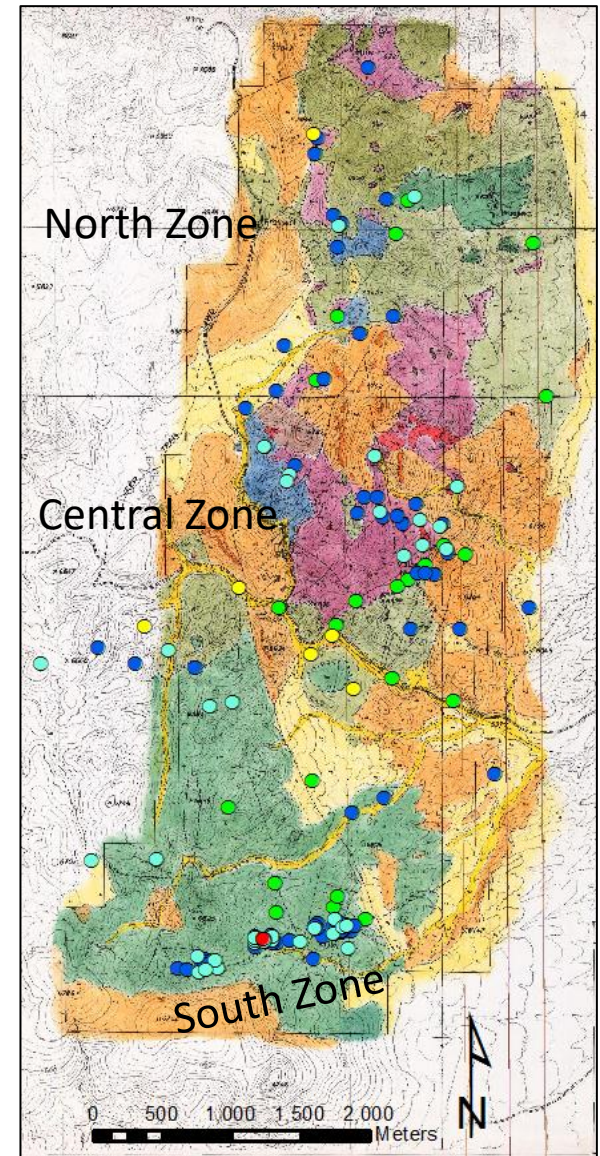
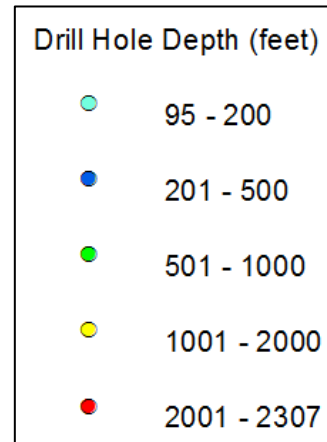
Modified from Muntean et al., 2007



From Marshak et al., 2000

Historical Drilling (165 holes)

- Exploration began in 1968, 9 companies
- Small mineralized body in South Zone hosted by Ov calcareous siltstone (~50,000 oz @ 0.011 oz/t)
- 36 Holes in South Zone (4100 ft strike length) with intercepts up to 9.977 g/t Au
- TM98-2, deepest DH in district (Digger Resources) TD NX CORE 2307 ft in Ov? with thin porphyry dikes and intense silicification + pyrite at bottom
- Central Intrusion
- Deep Srm on south end
- Shallow Srm on north end

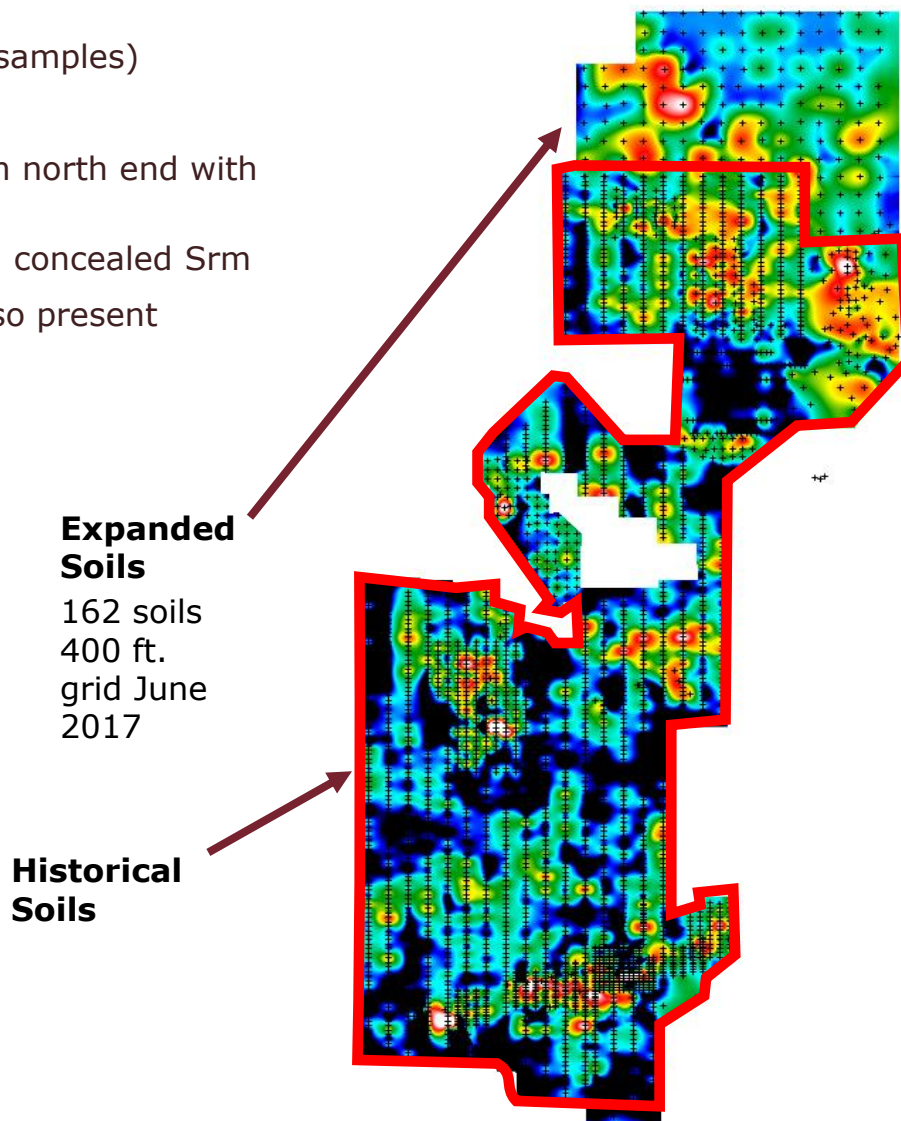


Work Completed By Orogen

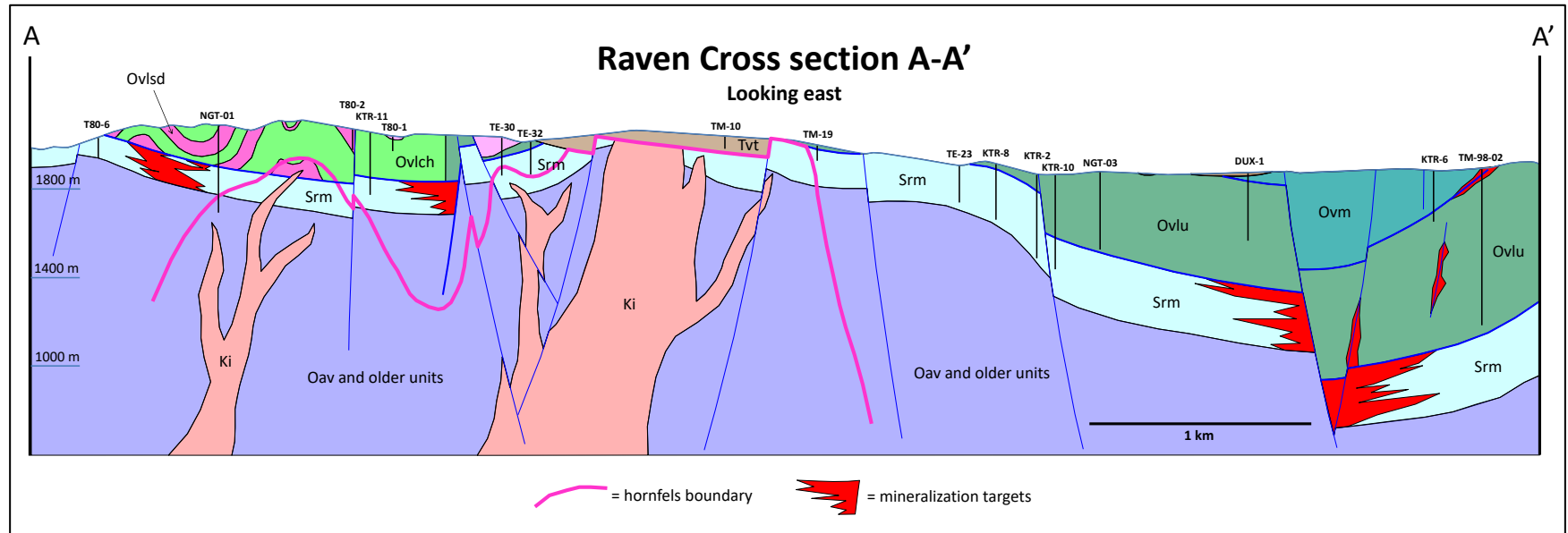
- Extended soil survey, 162 samples (2017)
- Added 36 additional claims
- 3D Modeling (2017)
 - Georeka software
 - Compilation of historical data
 - Defined deep target in South block
 - Identified need for additional mapping, especially in North block
- Mapping (2018)
 - Geologic map of North block
 - Reconnaissance map of decalcification
 - Recognition of multiple silty/sandy carbonate horizons
 - Biostratigraphic dating: Improved knowledge of structural and stratigraphic relationships

Soil Geochemistry

- Au in soils compilation (3582 historical samples)
- 162 additional soils (REN)
- Widespread gold anomalies identified on north end with overall northwest trend
- Most anomalies in upper plate overlying concealed Srm
- Soil anomalies of As, Sb, Hg, Cu, Mo also present



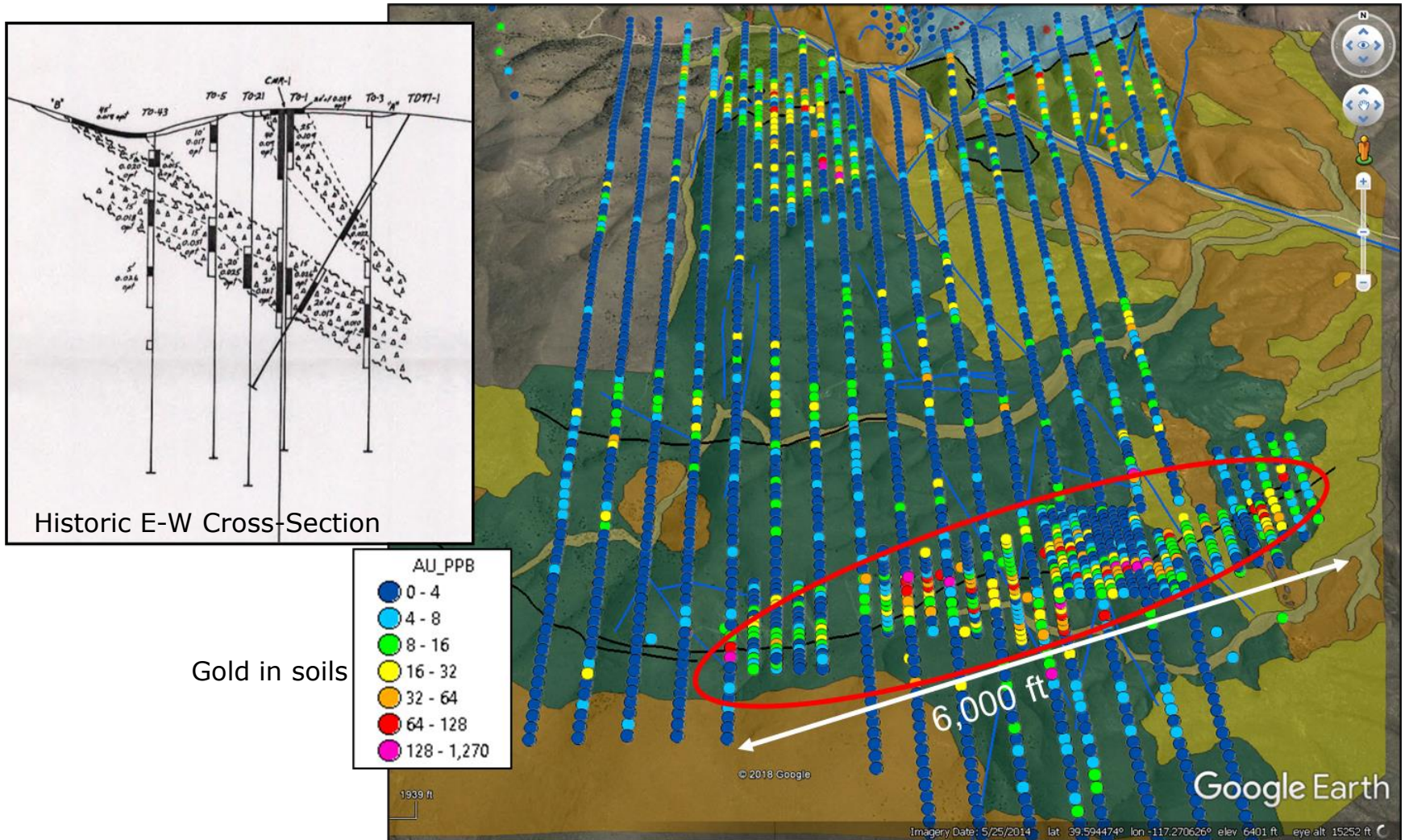
Two Target Domains



North Target – Roberts Mountains formation at 100-600' deep targeting below gold-in-soil anomalies in upper plate siliciclastic rocks. Open Pit Potential

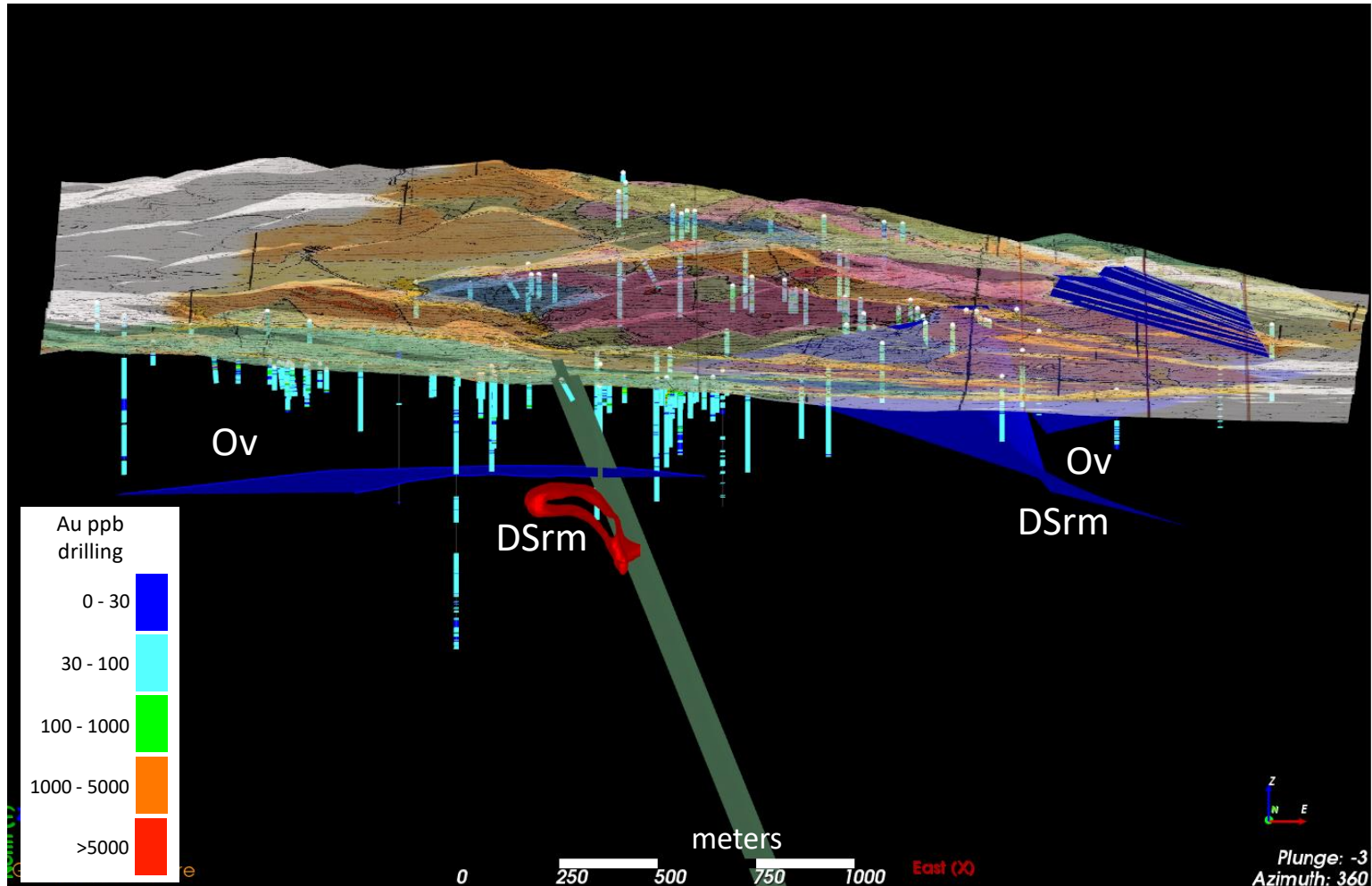
South Target – Roberts Mountains formation at ~2000' deep below high grade gold cell drilled out in the upper plate. Underground Potential

3D Modeling – South Target

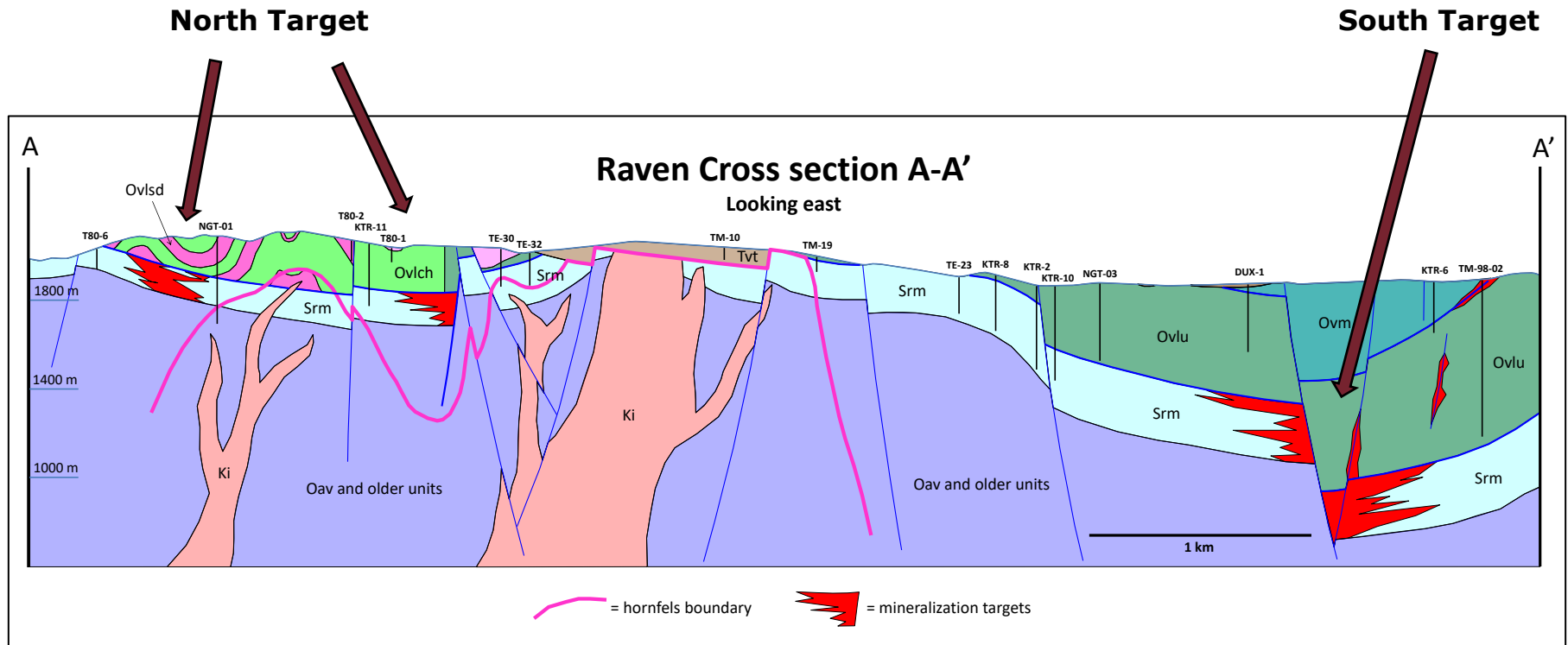


3D Modeling

South Target



North-south Cross Section



Geologic Mapping

Focused on northern area

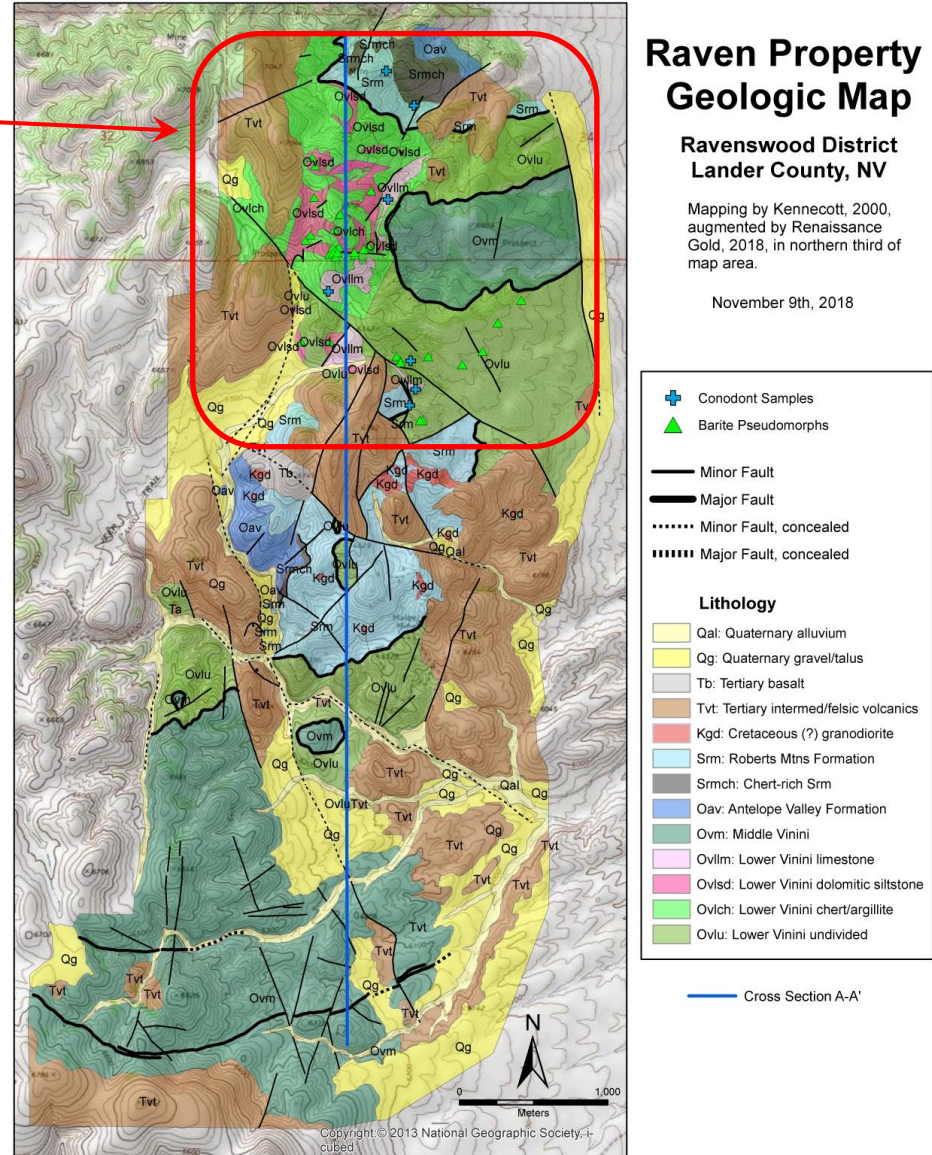
- Srm occurs at 100-600 ft. depths
- Widespread soil Au anomalies
- Widespread Au in drill intercepts

Raven Property Geologic Map

Ravenswood District Lander County, NV

Mapping by Kennecott, 2000,
augmented by Renaissance
Gold, 2018, in northern third of
map area.

November 9th, 2018

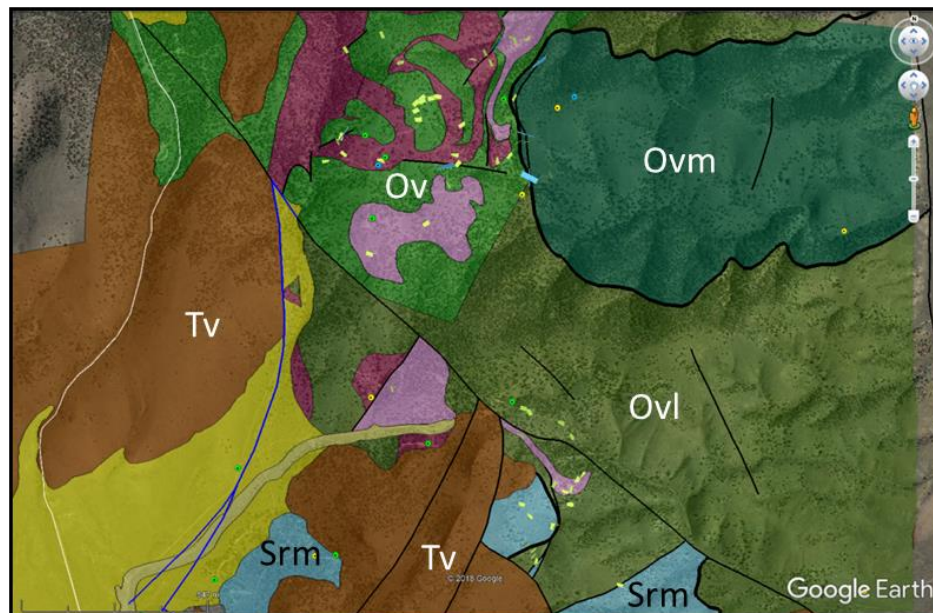


Geologic Mapping

NORTH TARGET

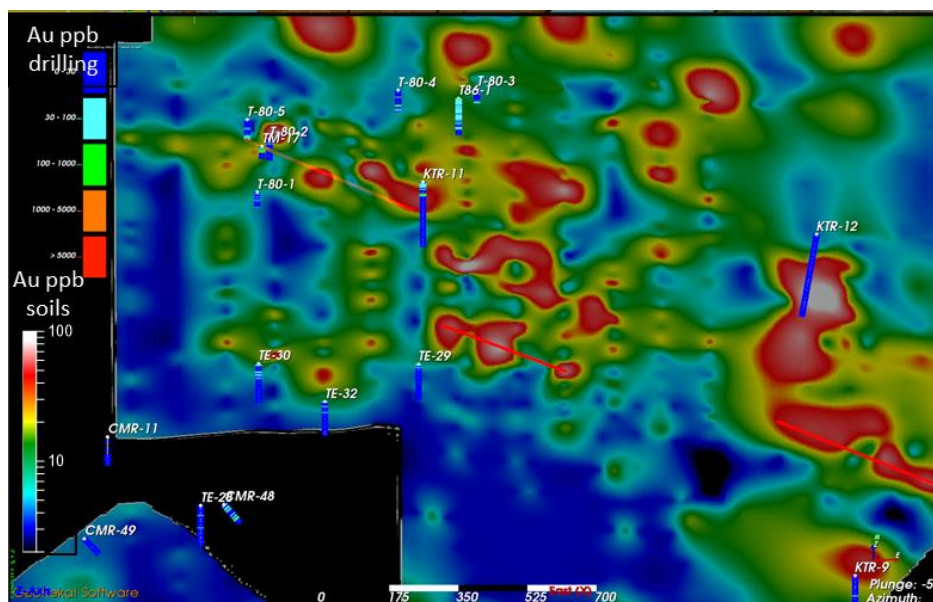
Geology

- Major NW structure projects to barite mine
- Upper plate stratigraphy anomalous in many metals
- Possible leakage anomalies from underlying favorable lower plate carbonates



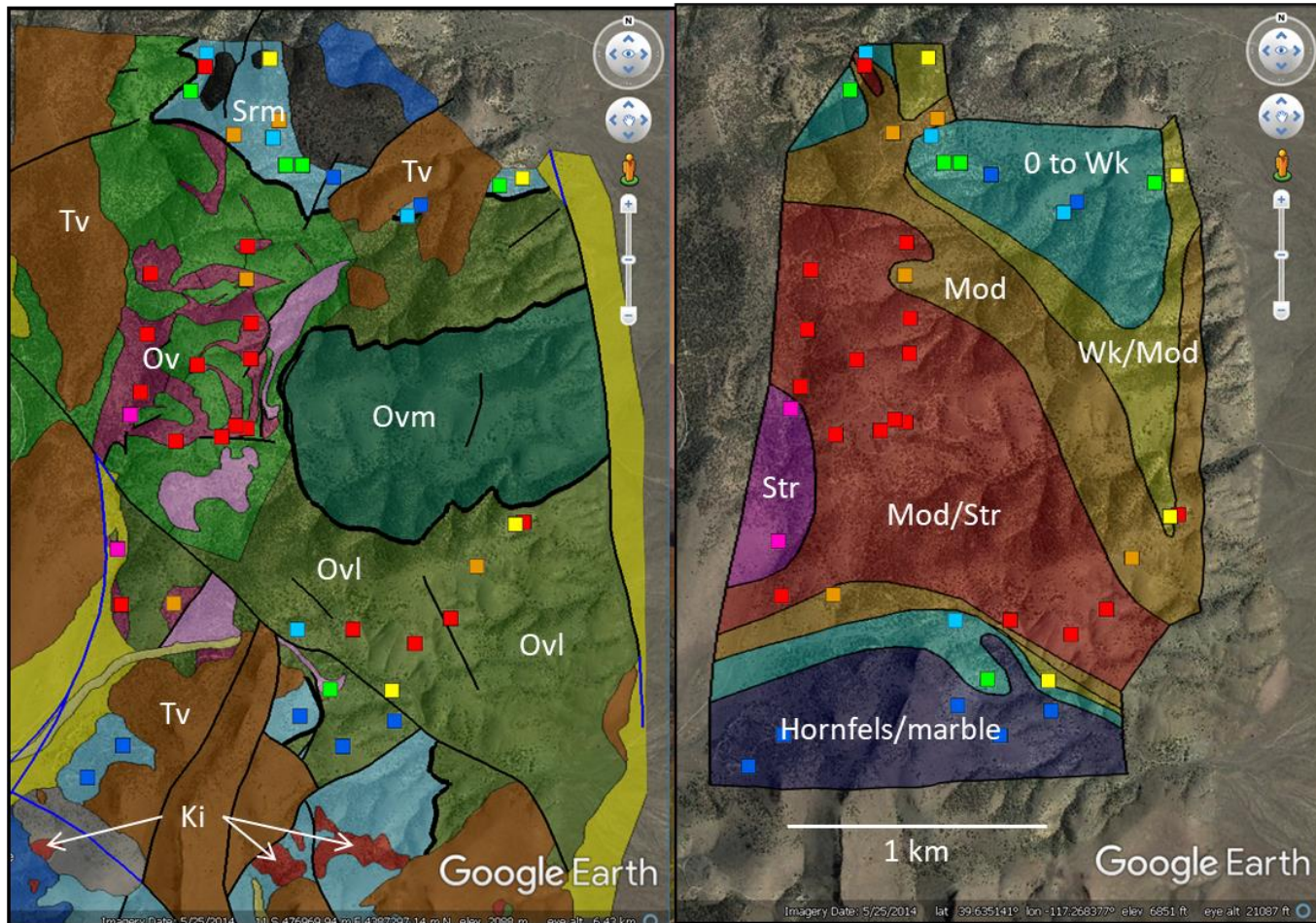
Gold in soils

- 162 additional soils (OGN)
- Widespread gold anomalies identified on north end with overall northwest trend
- Most anomalies in upper plate overlying concealed Srm
- Soil anomalies of As, Sb, Hg, Cu, Mo also present



Geologic Mapping

RECONNAISSANCE DECALCIFICATION MAP

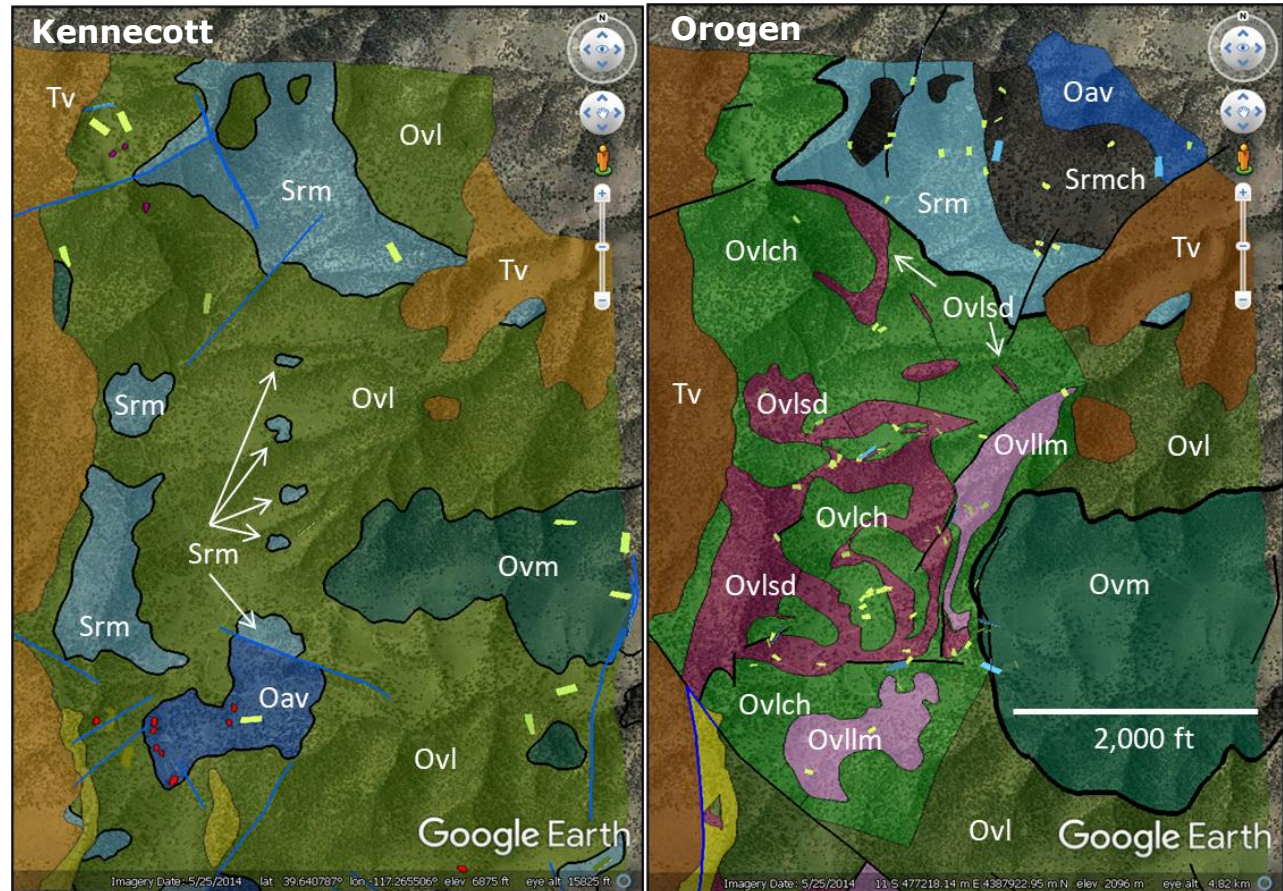


North Target

Geologic Mapping

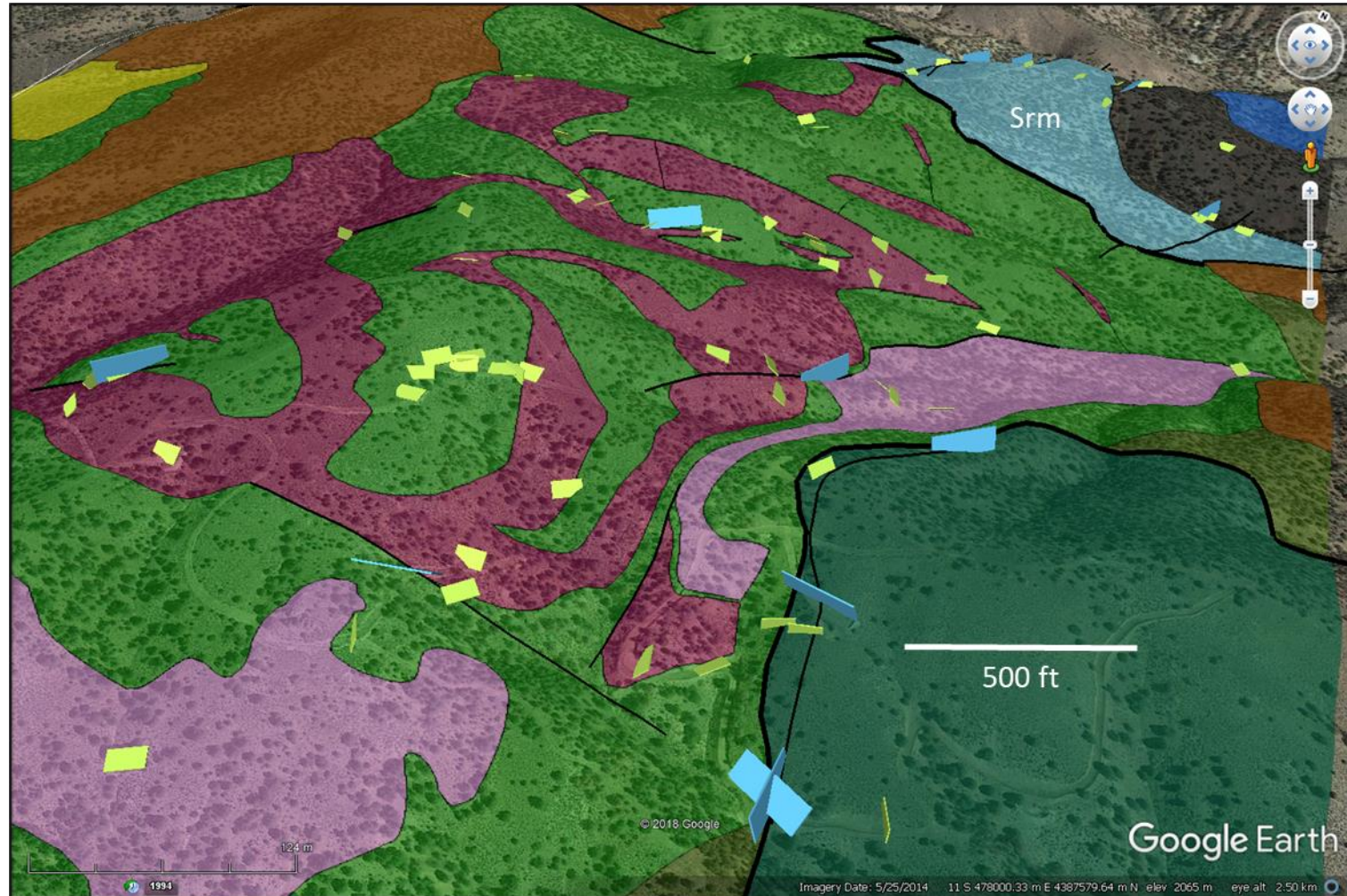
North Target

- Multiple silty carbonate horizons in upper plate (Ov)
- Upper carbonates
 - Allochthonous
 - Decalcified
 - Sulfidized
 - Ba-rich
 - Barite pseudos
 - P nodules
- Lower carbonates (Roberts Mtns Fm.) are poorly tested



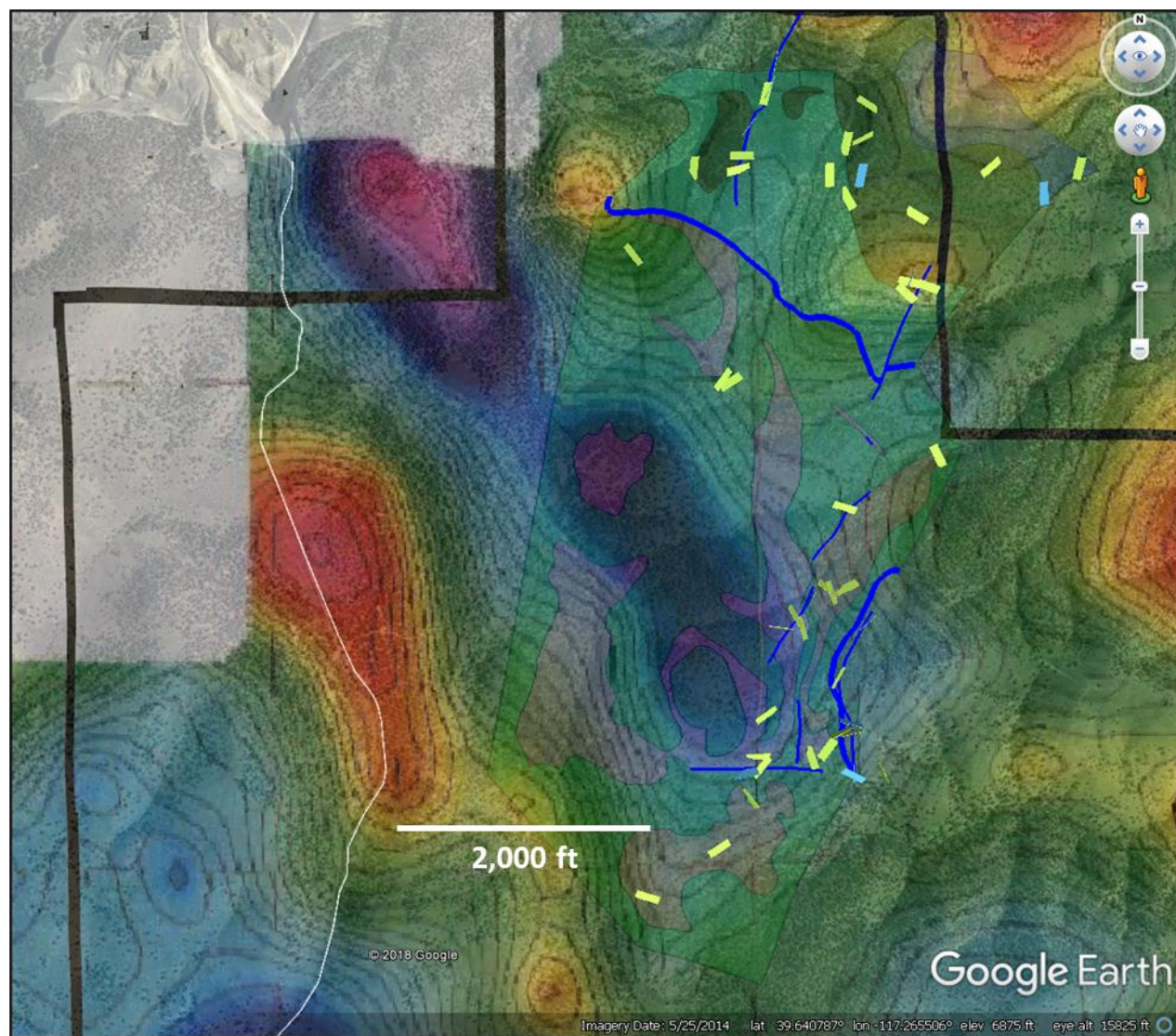
Geologic Mapping

Bedding attitudes indicate presence of NW-trending antiform/domal structure



Geologic Mapping

**Residual gravity
low coincides with
antiform and barite
mine structure**



Geologic Mapping

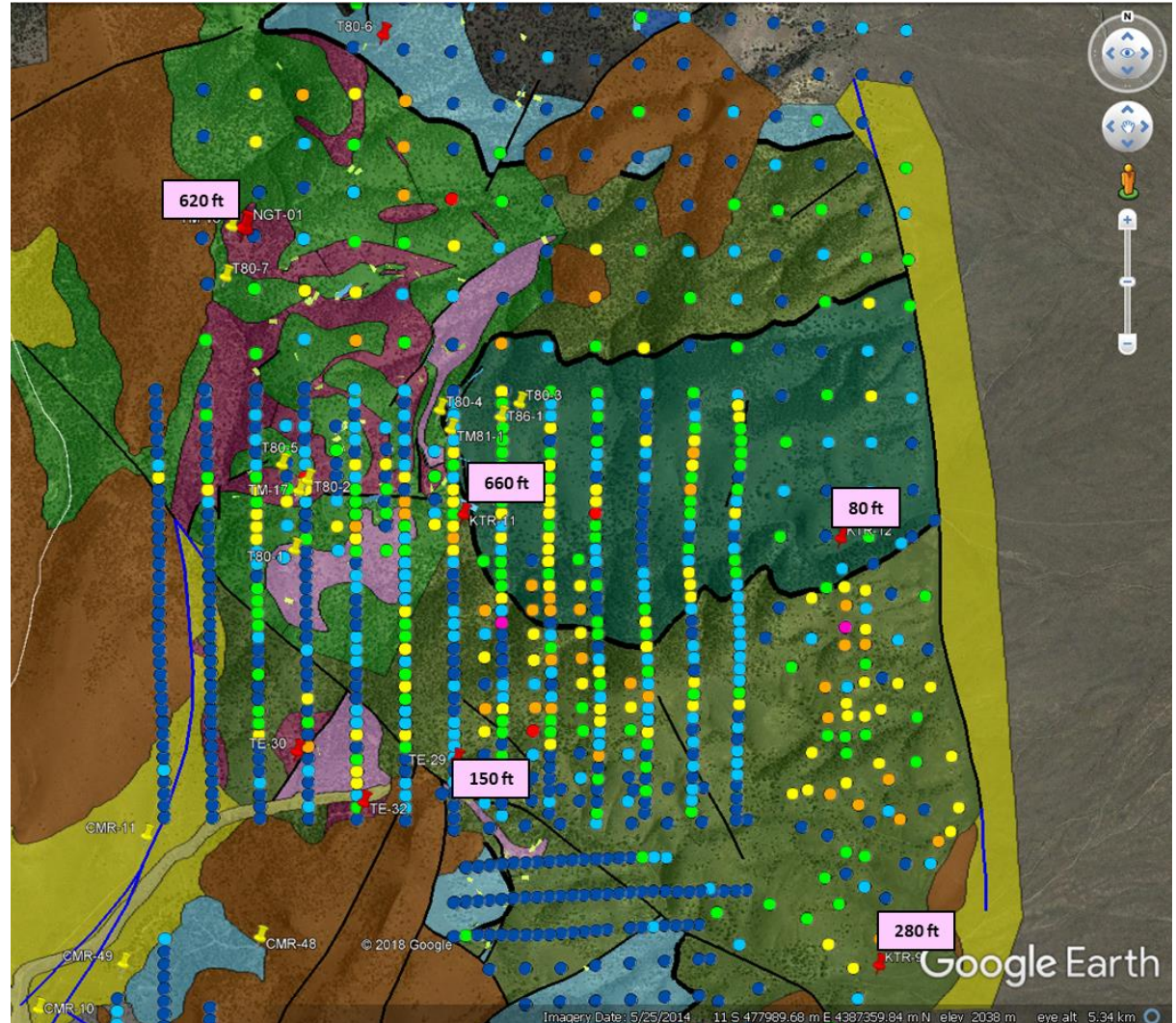
In the North Block, Roberts Mountain Formation is concealed at relatively shallow depths over a large area, overlain by Vinini Formation with widespread soil gold anomalies

Soil samples

AU_PPb



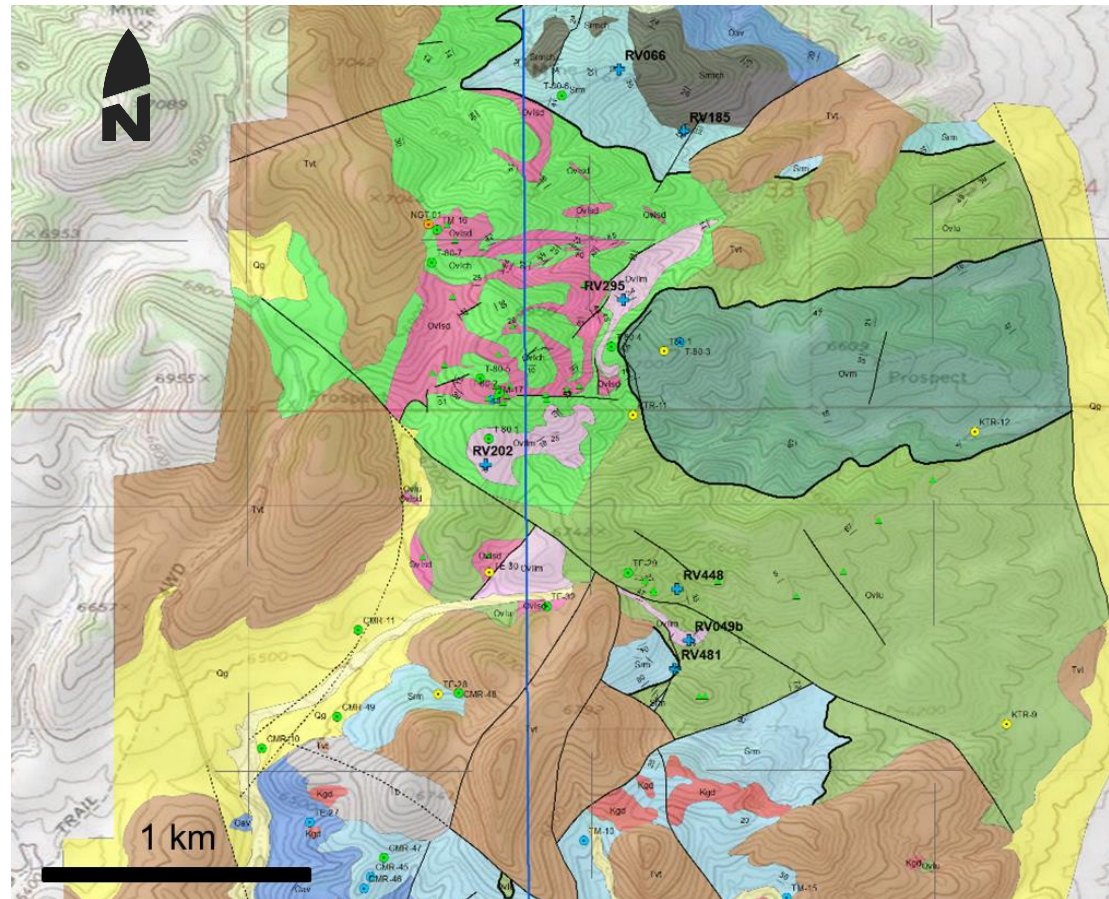
280 ft = drill intercept of lower plate with depth



Biostratigraphic Dating

North Target

- Recent conodont ages refine stratigraphy
- Multiple favorable lower plate horizons identified



Label	Fossil Type	System	Series	Absolute Age
RV049b	conodonts	Devonian	Late	382.7 to 372.2 million years
RV185	conodonts	Silurian	Wenlock	433.4 to 430.5 million years
RV202	conodonts	Ordovician	Middle	467.3 to 458.4 million years
RV295	conodonts	Ordovician	Middle	467.3 to 458.4 million years
RV448	conodonts	Devonian	upper Middle	387.7 to 382.7 million years

Summary

A classical Carlin target with the characteristics necessary to host a multi-million ounce gold deposit

- Multiple silty carbonate horizons in upper plate (Ov)
- Untested lower plate targets in North and South blocks, distal to intrusive at center of district
- South Zone mineralization comprises large, “High Grade” gold anomaly that should be tested at depth in lower plate rocks
- North targets have widespread gold anomalies above largely untested Roberts Mountains Formation along a northwest corridor
- Large scale folds and deep crustal-scale faults may provide loci for mineralization
- One of few opportunities to explore a classical Carlin-type setting



Contact

Paddy Nicol
President & CEO
paddy@orogenroyalties.com

Bob Felder
Senior VP
bob@orogenroyalties.com

Dan Pace
Exploration Manager
dan@orogenroyalties.com

TSX.V:OGN

OROGENROYALTIES.COM

info@orogenroyalties.com