

How to check your water service line material

The City's water mains are not made of lead. However, the water service line running from the water main to your home may be made of lead or steel, which may break.



For any questions about lead in your water:

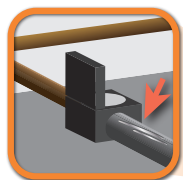
Call our hotline at 215.685.6300.

Our staff will provide information on water testing, safety tips and replacement options.

Lead can also be found in older brass fixtures and valves and in old solder or epoxy, where pipes are joined.



You can test the water service line where it connects to the water meter in the basement.



Water Service Line
May be made of lead, copper, galvanized steel or plastic.

Possible Pipe Materials



Lead



Copper



Galvanized Steel



Plastic

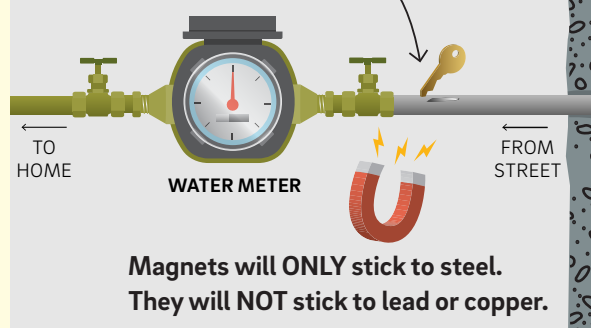
Follow these steps:

You will need:

- Key or a coin
- Strong refrigerator magnet

1. Find the water meter in your basement.
Look at the pipe that comes through the outside wall of your home and connects to your meter.
2. Carefully scratch the pipe (like you would a lottery ticket) with a key or a coin. Do not use a knife or other sharp tool. Take care not to make a hole in the pipe. If the scratch turns a shiny silver color, it could be lead or steel.
NOTE: If pipe is painted, use sandpaper to expose the metal first.
3. Place the magnet on the pipe.
If a magnet sticks, it is a steel pipe.

Lead is dull, very soft, and will turn a shiny silver color when scratched.



Other ways you can check for lead:

- Lead test kits can be purchased at your local hardware or home improvement store. These kits are used to test what the pipe is made from—not the water inside. Look for an EPA recognized kit.
- A [licensed and insured plumber](#) can inspect your pipes and other plumbing for lead or steel. Replacing an older brass faucet or valve may be a simple way to reduce the lead in water.