

ST-116L

Skipsteknisk 

74.7 m Stern Trawler for owner Giske Havfiske AS

> Atlantic Viking



ST-design 
- freedom to create

www.skipsteknisk.no

ST-116L

74.7 m Stern Trawler for owner Giske Havfiske AS
Atlantic Viking

GENERAL

MAIN CHARACTERISTICS

Length over all	74.70 m
Length between p.p.	66.00 m
Breadth moulded	15.40 m
Depth to main deck	6.16 m
Depth to shelter deck	9.11 m
Gross Tonnage	3439 tons
Speed	approx. 14.5 knots
Accommodation	32 pers + hospital
IMO	9652806

Tank capacities

- Fuel oil: approx. 600 m³
- Urea: approx. 40 m³
- Potable fresh water: approx. 40 m³
- Technical fresh water (fore peak): approx. 90 m³
- Freezer cargo hold: approx. 1700 m³
- Refrigerated hold / fish meal store main deck: approx. 240 m³

Antirolling tank

One passive antirolling tank

Class

DNV +1A1, Ice 1C, Stern Trawler, E0 (Hull ice-reinforced in accordance to DNV +1A1-Ice 1B)

Speed

- In ballast condition: approx. 14.5 knots

Accommodation

- Arranged for 32 persons in single and twin cabins with separate bathrooms
- Hospital

Propulsion system

- 1 x Wärtsilä 9L32 main engine: 4500 kW / 750 rpm
- 1 x main Wärtsilä C.P.P. propeller: ø 3800 mm
- 1 x main reduction gear, single in single out, with one PTO for shaft alternator

Auxiliary diesel engines

- 1 x Caterpillar C32 910 kW @ 1800 rpm
- 1 x Caterpillar 450 kW @ 1800 rpm

Shaft alternator

- 1 x shaft alternator PTO driven av 1200 rpm, 2340 kVA

Emergency / harbour generator aggregate

- 1 x 199 kW @ 1800 rpm

Bow thruster

- 1 x electric powered transverse bow thruster: 650 kW

Rudder

- 1 x flap rudder
- 1 x electric hydraulic steering gear

Navigation and radio communication

- 2 x ARPA radars, 10 cm and 3 cm
- 1 x gyro
- 1 x auto pilot
- 2 x GPS standard
- 1 GPS differential
- 2 x echo sounders
- 2 x videoplotters / trackplotters
- 1 x catch control system
- 1 x speed log
- 2 x satellite communication systems
- 3 x VHF
- Vingtor PA-system
- Further communication system in full compliance with GMDSS requirements

Deck equipment

Vessel is equipped with deck and fishing winches.

- 1 x anchor windlass
- 1 x capstan
- 2 x trawl winches: approx. 50 tons each
- 1 x 3rd trawl winch: approx. 50 tons each
- 8 x sweepline winches: approx. 13 tons each
- 2 x Gilson winches: approx. 20 tons each
- 1 x outhaul winch: approx. 12 tons
- 2 x cod-end winches: approx. 12 tons each
- 3 x net storage drums
- Automatic trawl operation system

Cranes

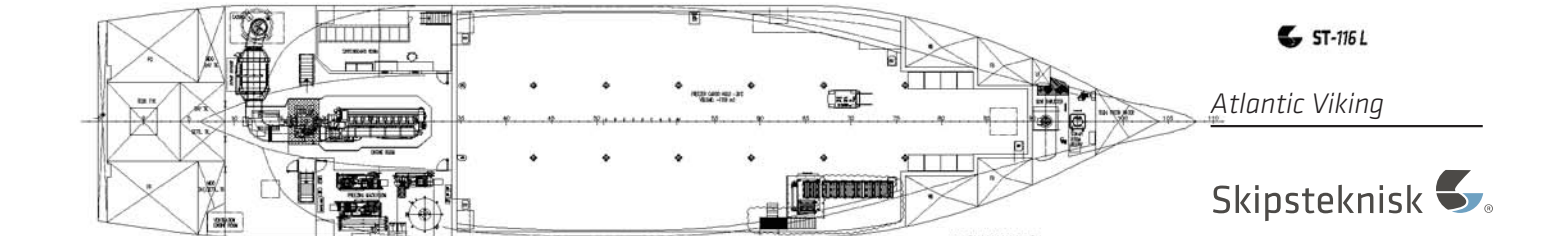
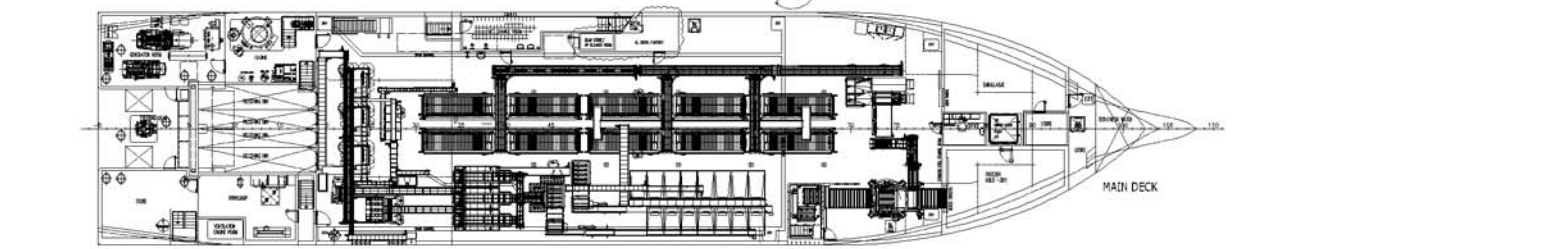
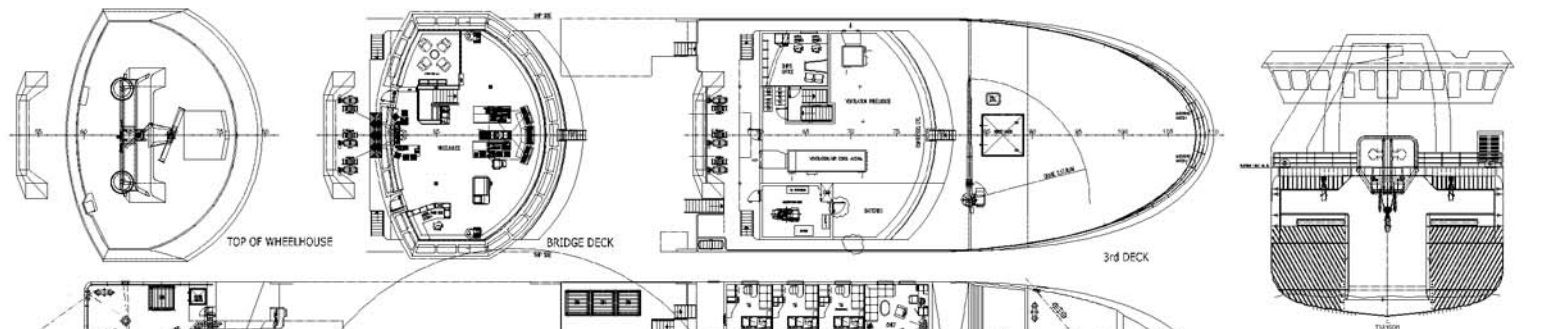
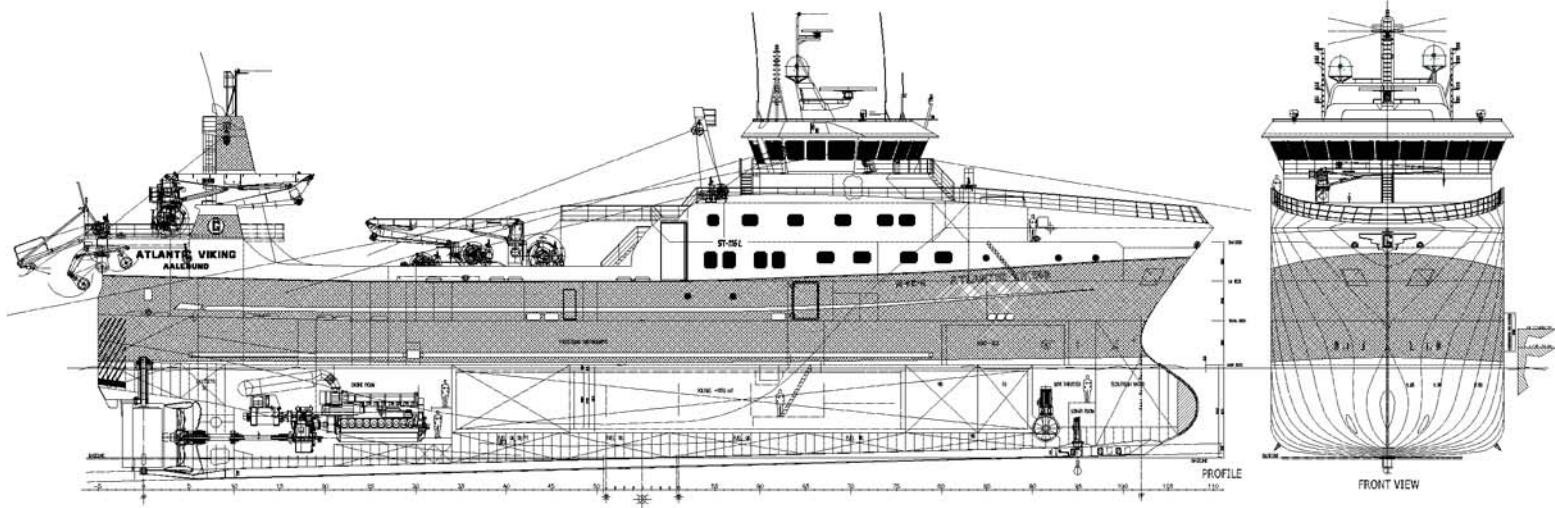
- 1 x deck crane: approx. 6 tons / 15 m
- 1 x deck crane: approx. 3 tons / 13.5 m
- 1 x deck crane: approx. 2.5 tons / 8 m

Processing equipment

The vessel is outfitted with a fully integrated onboard grading, processing and freezing system

Safety equipment

- 1 x MOB boat
- Safety equipment according to regulations for the specified class and number of crew



ST-116 L

Atlantic Viking

Skipsteknisk

ST-design ®

GENUINE SHIP DESIGN - *freedom to create*

HAVNEVIK



SKIPSTEKNISK AS | Klaus Nilsens gt. 4, P.O.Box 36 Sentrum, NO-6001 Aalesund, Norway
PHONE +47 70 10 33 44 | FAX +47 70 10 33 48 | office@skipsteknisk.no | www.skipsteknisk.no

Skipsteknisk 
